

가

---

(aneurysmal bone cyst)

1

19

가

가

MRI

가

---

(aneurysmal bone cyst)

19

1

1).

2-4),

19

3

---

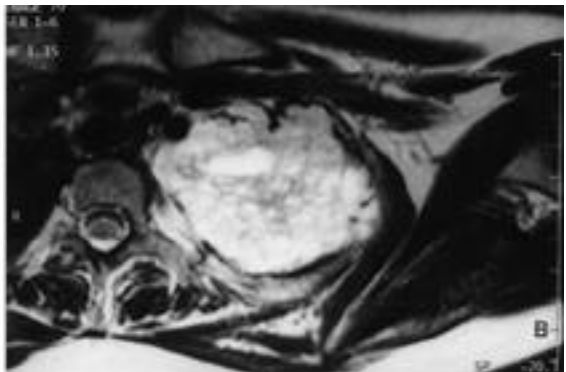
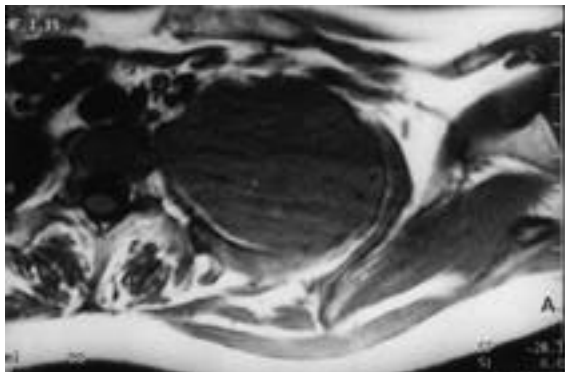
가

505

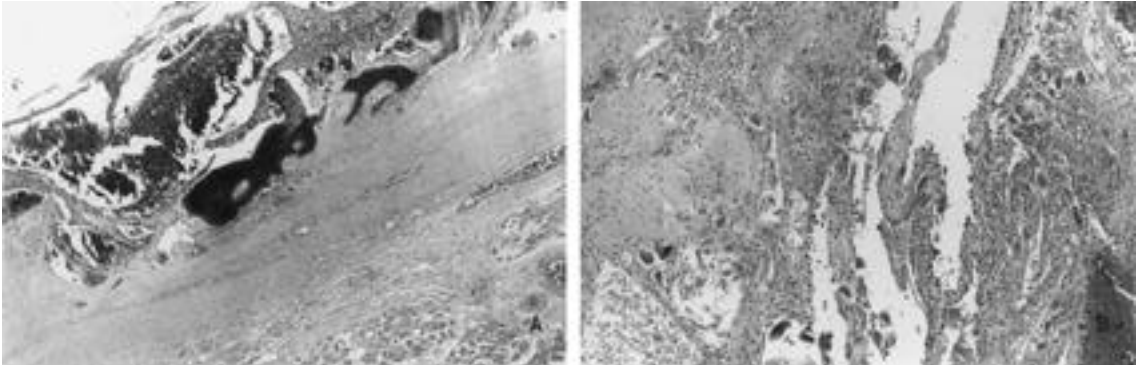
Tel : 02) 590-1592, Fax : 02) 592-4190, E-mail : lys9908@cmc.cuk.ac.kr



**Fig. 1.** The simple chest X-ray shows a expansile and oval radio-opaque density in the left upper lung field.



**Fig. 2.** MRI shows a well defined bulging mass on the left first rib. The lesion shows T1 intermediate(A)/T2 bright signal intensity(B) with cystic portions.



**Fig 3-A.** Mature lamellar bone in the periphery of the lesion, separating the lesion from a bundle of striated muscle (H&E × 40).

**B.** There are large blood-filled spaces and fibrous septae containing osteoid, and osteoclast-like giant cells (H&E × 100).

lae) , Mayo clinic 3%  
(Fig. 3A). 7)

가 (septa) 7)

(osteoid) , 가 7)  
(Fig. 3B).

(fibromyxoid) 가 1,5-8)  
가 가

8)

1942 Jaffe Lichtenstein 8)  
5,6)

1) 5,6,8)

20 1) 7) 70% 1,5-8) 가

가 가  
 가  
 Kyriakos Hardy 9) 1  
 1

가  
 가  
 가

case of aneurysmal bone cyst arising from the left 4th rib. *Kyobu Geka*, 51:158-60, 1998.

3) **Haraguchi S, Hinokiyama K, Kenjo M, et al** : Aneurysmal bone cyst of the left 5th rib. *Kyobu Geka*, 48:1147-1149, 1995.  
 4) **Nakayama K, Gu K, Yamauchi M, Okada K, Sasaki T and Yamada K** : Successful operation for two cases of aneurysmal bone cyst of the rib. *Nippon Geka Gakkai Zasshi*, 94:648-51, 1993.  
 5) **Jaffe HL** : Aneurysmal bone cyst. *Bull Hosp Jt Dis.*, 11:3-13, 1950.  
 6) **Lichtenstein L** : Aneurysmal bone cysts, a pathological entity commonly mistaken for giant-cell tumor, and occasionally for hemangioma and osteogenic sarcoma. *Cancer*, 3:279-289, 1950.  
 7) **Unni KK** : Dahlin's bone pathology. 5th ed. Philadelphia, *Lippincott-Raven publishers*, pp382-390, 1996.  
 8) **Tillman BP, Dahlin DC, Lipscomb PR and Stewart JR** : Aneurysmal bone cyst: an analysis of ninety-five cases. *Mayo Clin Proc.*, 43:478-495, 1968.  
 9) **Kyriakos M and Hardy D** : Malignant transformation of Aneurysmal bone cyst with an analysis of the literature. *Cancer*, 68: 1776-1780, 1991.

**REFERENCES**

1) **Ayala AG, Ro JY, Teot LA and Spjut HJ** : Neoplasms and tumor-like lesions of bone. In : Silverberg SG ed. Principles and practice of surgical pathology and cytopathology. 3rd ed. New York, Churchill livingstone, pp926-927, 1997.  
 2) **Tokitsu K, Tachibana S, Kawakami M, et al** : A

## Abstract

### **Aneurysmal Bone Cyst of the Rib Misdiagnosed as Soft Tissue Tumor - A Case Report -**

**Ah Won Lee, M.D., Youn Soo Lee, M.D., Gun Huyn Jo, M.D.\*,  
Jung Dal Lee, M.D.\*\* , Byung Kee Kim, M.D.**

*Department of Clinical Pathology & Thoracic and Cardiovascular Surgery\*,  
College of Medicine, The Catholic University of Korea, Seoul, Korea*

*Department of Pathology, College of Medicine, Hanyang University, Seoul, Korea\*\**

---

Aneurysmal bone cyst(ABC) is a benign lesion and generally occurs in the long bones and vertebral column. ABC of the rib is an uncommon entity. We reported a case of ABC originating in the left first rib. The patient was a 19-year-old woman and presented with palpable mass on the shoulder. Chest X ray and MRI showed a large expansile mass, with multiple cystic areas, arising from the left first rib and bulging out into retroclavicular and paravertebral soft tissue, so the lesion was initially misdiagnosed as a soft tissue malignant tumor destructing adjacent rib. On histological examination, the mass, which was surrounded by a peripheral band of mature trabecular bone, consisted of multiple anastomosing cavernous blood channels separated by fibrous septa that containing osteoid, myxochondroid material and osteoclast-type giant cells.

**Key Word** : Aneurysmal bone cyst, Rib

---

#### **Address reprint requests to**

Youn Soo Lee, M.D.

Department of Clinical Pathology, College of Medicine, The Catholic University of Korea

#505 Banpo-dong, Seocho-ku, Seoul, 137-701, Korea

Tel : 82-2-590-1592, Fax : 82-2-592-4190, E-mail : lys9908@cmc.cuk.ac.kr