

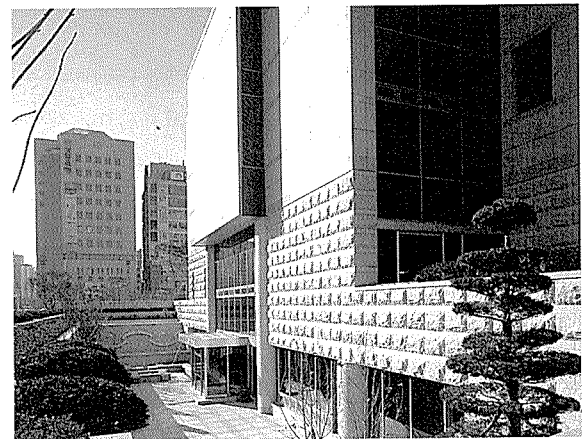
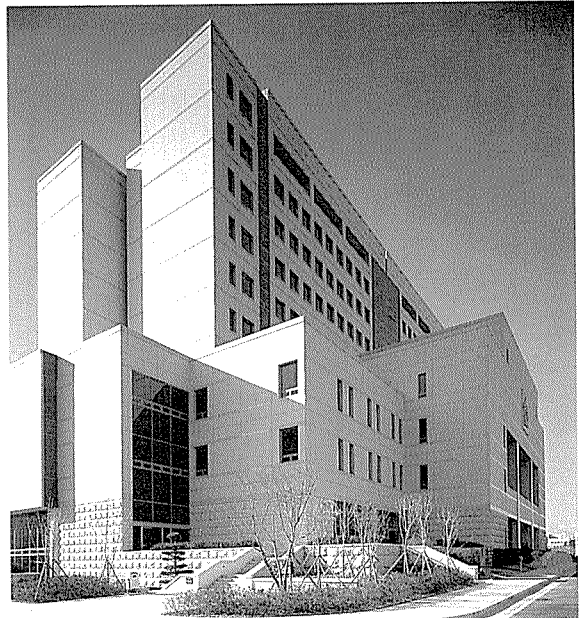
# 대전법원종합청사

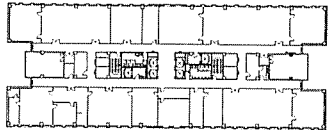
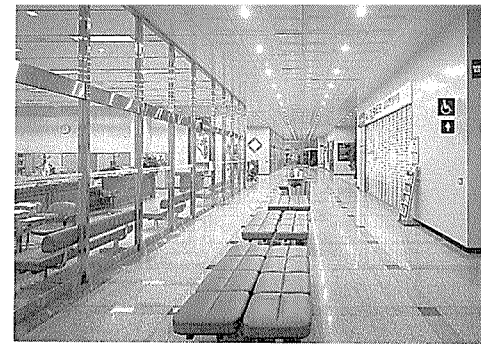
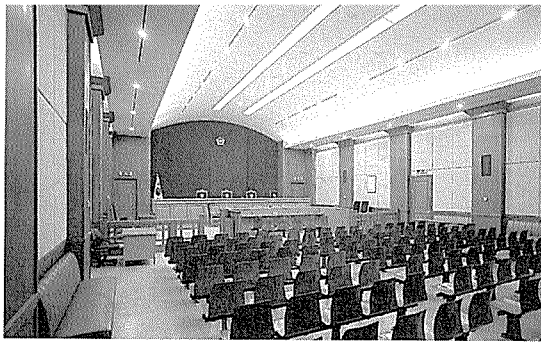
## Daejeon District Court

김병년 / (주)선진엔지니어링 종합건축사사무소  
 Designed by Kim Byeong-Nyeon

### 건축개요

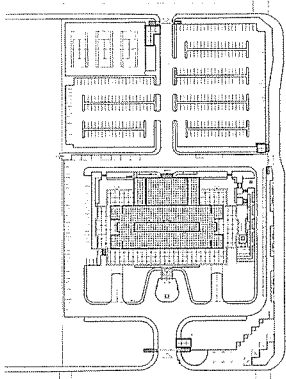
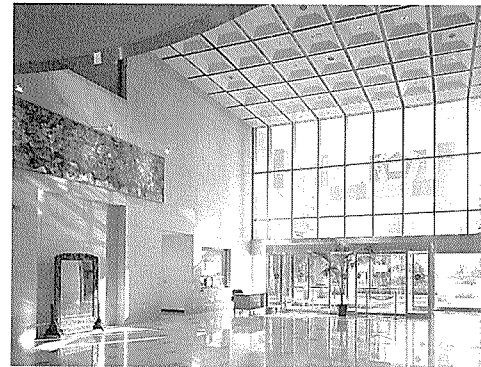
- 대지위치 대전광역시 서구 둔산동 1309
- 지역지구 중심상업지역, 최고고도지구, 주차장정비지구
- 대지면적 32,055.3㎡
- 건축면적 5,358.9㎡
- 조경면적 7,155.4㎡
- 건폐율 16.7%
- 용적률 89.6%
- 규모 지하1층, 지상10층
- 구조 철골철근콘크리트
- 외부마감 GPC+THK 24 컬러복층유리
- 시공자 현대산업개발(주)





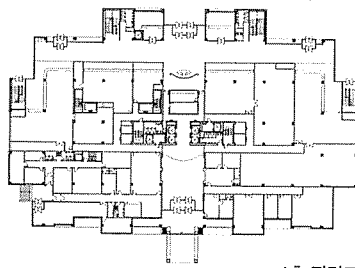
0 5 10 20

기준층 평면도

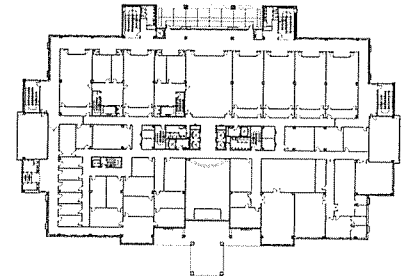


0 5 10 20 40

배치도



1층 평면도



범정층 평면도

