

# 연동교회 강화수양관

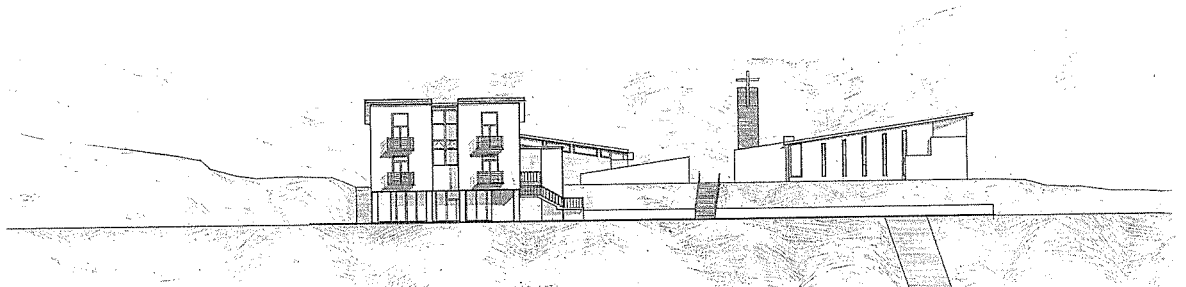
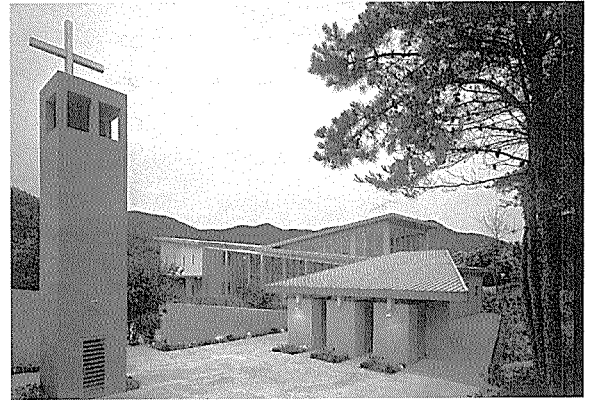
## Retreat Center, Yeondong Church

임재용/ 건축사사무소 O. C. A  
Designed by Lim Jae-Yong

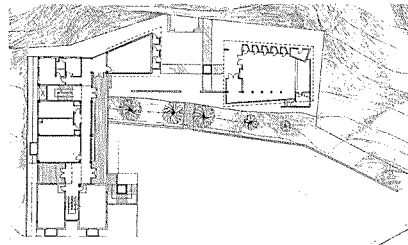
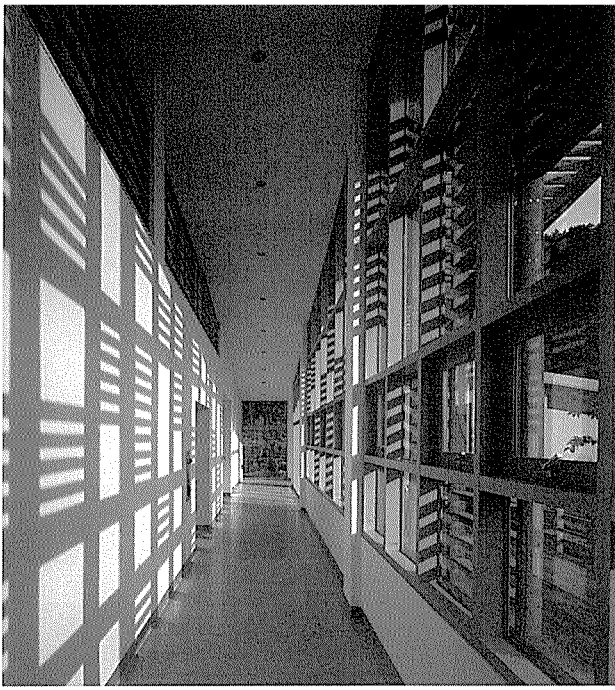


### 건축개요

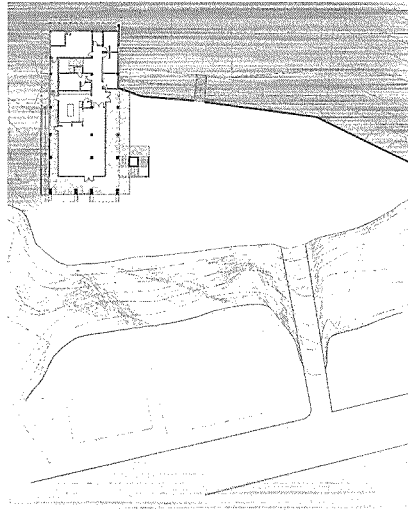
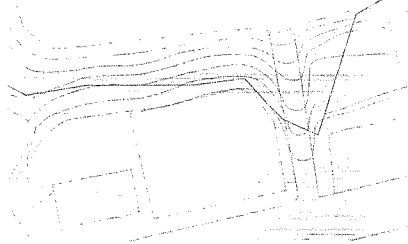
위치	인천광역시 강화군 내가면 고천리
용도	종교시설
대지면적	4,889㎡
건축면적	782.6㎡
연면적	1,427.7㎡
건폐율	14.7%
용적률	26.9%
규모	예배당1층, 숙소동 지상3층
구조	철근콘크리트조
외부마감	드라이버트, 노출콘크리트 시멘트몰타르 견출, 샌드위치패널
설계담당	김민규, 김도형, 문희경, 김희성
프리젠테이션	문희경, 최형석, 김희성
시공	(주)이세산업



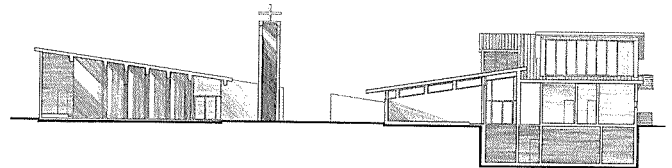
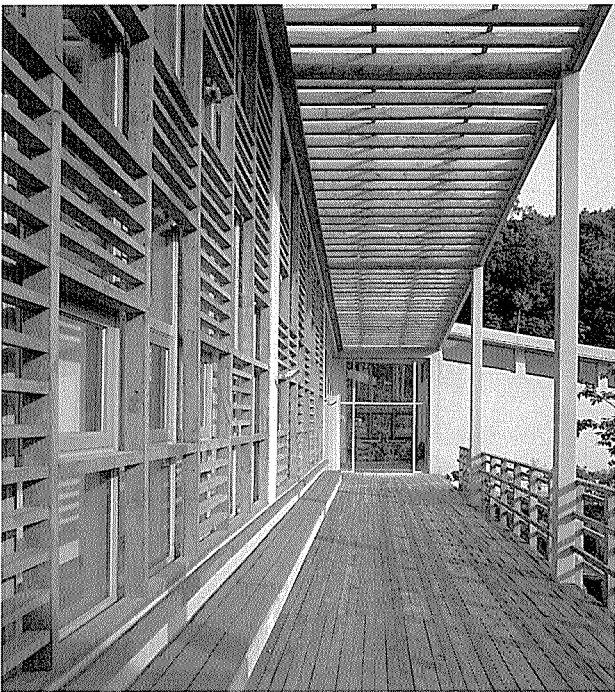
정면도



2층 평면도



1층 평면도



단면도

