

Two Species of Spiders of the genus *Trachelas* (Araneae: Corinnidae) from China

Ming-Shing Zhu, Da-Xing Song and Joo-Pil Kim*

(Department of Biology, Hebei Normal University, Shijiazhuang, Hebei 050016, China;

*Department of Applied Biology, Dongguk University, Seoul and the Arachnological Institute
of Korea Seoul 100-714, Korea)

ABSTRACT

The present paper deals with two species of spiders of the genus *Trachelas* Koch, 1866 from China. *Trachelas gui* n. sp. is described with illustrations. *Trachelas acuminus* (Zhu et An, 1988) is transferred to the genus *Trachelas*.

Key words: Spider, *Trachelas*, Araneae, China

INTRODUCTION

Three species of the genus *Trachelas* Koch 1866 have been known in China (Zhu and An, 1988; Chen *et al.* 1995). The present paper adds a new species to the spider fauna of China, *Trachelas gui* sp. nov. *Clubiona acumina* Zhu et An, 1988 is newly transferred to the genus *Trachelas* Koch. The type specimens of the new species are deposited in Hebei Normal University, China. All measurements are given in millimeter.

***Trachelas acuminus* (Zhu et An, 1988), n. comb. (Figs. 1-7)**

Clubiona acumina Zhu et An, 1988, p. 72, figs. 1-6 (female holotype, male allotype and two paratypes from Yicheng County, Shanxi Province, China).

Female. Total length 4.61-4.64. Cephalothorax 2.01-2.02 long, 1.75-1.76 wide. Carapace red brown with many small tubercles. Anterior eye row almost straight and posterior eye row recurred in dorsal view. AME 0.12, ALE 0.12, PME 0.10, PLE 0.10; AME-AME 0.10, AME-ALE 0.07; PME-PLE 0.19; MOA wider than long (0.34: 0.31), wider in front than behind (0.34: 0.26).

Chelicera brown with three teeth on promargin and two teeth on retromargin. Labium and endites yellow brown, labium wider than long. Leg I with ventral cusps on the last three segments. Measurement of legs: I 4.68, II 4.42, III 3.51, IV 3.93. Abdomen gray with longitudinal black and transverse white stripes. Epigynum with anterior margin, M-shaped.

Male. Total length 3.04. Cephalothorax 1.44 long, 1.18 wide. Measurement of legs: I 3.88, II 3.35, III 2.72, IV 3.61. Palp with an apical retrolateral tibial apophysis. Leg I with ventral cusps (Fig. 7).

Remarks. *Trachelas acuminus* is similar to *T. barroanus* Chamberlin, 1925 from Panama, but differs by the female epigynum with two intromittent orifices, and by the male palp with a longer apical tibial apophysis. Based on Platnick and Ewing (1995), *T. acuminus* is newly transferred to *Trachelas* because this species has ventral cusps on Leg I.

Distribution. China (Yicheng County, Shanxi Province).

***Trachelas gui* n. sp. (Figs. 8-15)**

Materials. Holotype ♀, paratypes 2 ♀ ♀, 1 ♂, Mt. Jianfengling (18.7° N, 108.8° E), Hainan Province, 15 Aug. 1990, Leg Gu Mao-Bing.

Female. Total length 2.90-3.27. Holotype 2.90. cephalothorax 1.32 long, 1.06 wide. Carapace red brown with many small tubercles. Anterior eye row slightly procurved and posterior eye row slightly recurved. AME = ALE = PME = PLE 0.10 ; AME-AME = AME-ALE 0.03; PME-PME 0.05, PME-PLE 0.08, MOA wider than long (0.25 : 0.23), wider behind than in front (0.25 : 0.23). Chelicera red brown and short, both promargin and retromargin with three teeth. Labium red brown, longer than wide. Endites and sternum orange. Endites distally rounded. Leg I with ventral cusps on the last three segments. Measurement of legs: I 3.34 (1.03, 1.23, 0.65, 0.43), II 2.59 (0.88, 1.03, 0.68, 0.43), III 2.36 (0.68, 0.75, 0.60, 0.33), IV 3.03 (0.90, 1.00, 0.78, 0.35).

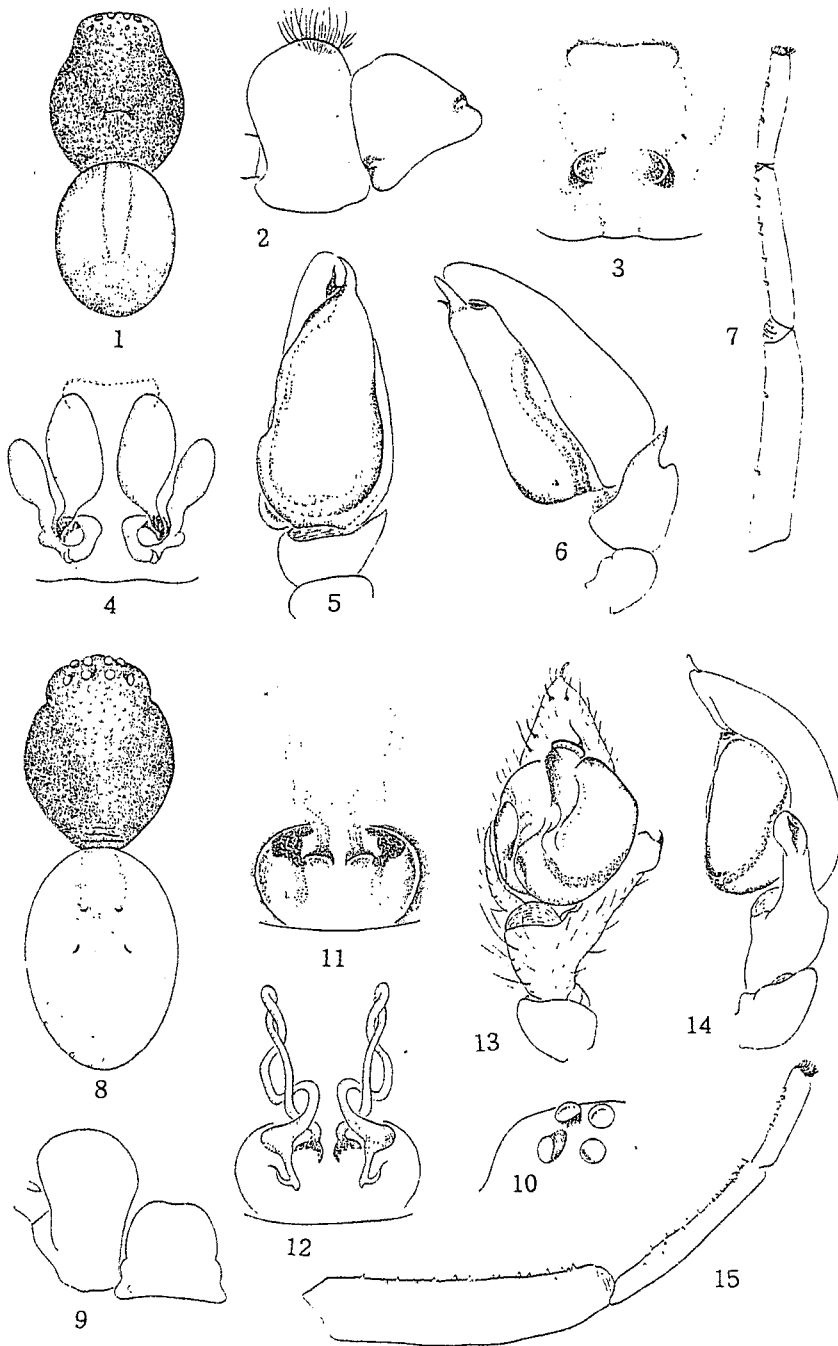
Leg formula: 1, 4, 2, 3. Abdomen oval, yellow with white spots on dorsum. Epithnum with semicircular lateral margins, connecting ducts very long.

Male. Total length 3.37, Cephalothorax 1.55 long, 1.29 wide. Carapace dark red. Abdomen sclerotized on dorsum. Measurement of legs: I (1.46, 1.78, 0.86, 0.46), II (1.06, 1.35, 0.83, 0.43), III (0.73, 0.89, 0.66, 0.36), IV (0.99, 1.09, 0.89, 0.40). Leg I with ventral cusps on the last three segments. Palp with elongated and distally swollen tibial apophysis, embolus coiled (Fig.13).

Remarks. The male palp of this new species has an elongated and distally swollen lateral tibial apophysis, and the female epigynum has very long connecting ducts. Based on these characteristics, it may be distinguished from the other species of *Trachelas*.

REFERENCES

- Chen, J. J.B. Ping, and J.Z. Zhao, 1995. A new species of spider of the genus *Trachelas* from China. Acta Zootaxon. Sin., **20**(2): 161-164.
- Platnick, N.I. and C. Ewing, 1995. A revision of the tracheline spiders (Araneae, Corinnidae) of southern South America. Am. Nus. Novitates, **3128**: 1-41.



Figs. 1-15. 1-7, *Trachelas acuminus* (Zhu et An): 1, Female, dorsal view; 2, Endite and labium; 3, Epigynum, dorsal view; 4, Same, ventral view; 5, Left male palp, ventral view; 6, Same, retrolateral view; 7, Leg I, lateral view. 8-15, *Trachelas gui* n. sp. 8, Female, dorsal view; 9, Left half of the head, showing eyes, dorsal view; 10, Epigynum, dorsal view; 11, ventral view; 12, Endite and labium; 13, Left male palp, ventral view; 14, view; 15, Leg I, lateral view.

Zhu, M.S. and R.Y. An, 1988. Two new species of the genus *Clubiona* from China (Araneae: Clubionidae). J. Hebei Educ. Coll. (Nat. Sci.), **2**: 72-75.

RECEIVED: 10 May 1998

ACCEPTED: 5 December 1998

중국산 *Trachelas* 속 (거미 목: 코리나 과) 2종

주 명 생 · 송 대 상 · 김 주 필*

(하북사범대학교 생물학과, 석가장, 중국; *동국대학교 응용생물학과, 서울 100-714, 대한민국)

요 약

중국산 *Trachelas* 속의 *Trachelas gui* n. sp.와 *Trachelas acuminus*의 2종을 기재발표한다. 특히 후자의 종은 첫 번째다리의 복부면에 돌기가 있기 때문에 염낭거미 과의 염낭거미 속에서 코리나거미 과의 뿔이거미 속으로 전환하여 기재한다.