

## **Taxonomic Review of Korean Lucanidae (Coleoptera: Scarabaeoidea)**

**Jin Il Kim and Su-Yeon Kim**

(Department of Biology, Sungshin University, Seoul 136-742, Korea)

### **ABSTRACT**

Twenty-five nominal species of Korean stag beetles have been reported from Korea since Heyden (1887). As a result of the present study, seven species are synonymized and the following six species are excluded from Korean fauna because they have been misidentified: *Aegus laevicollis*, *Platycerus delicatulus*, *P. acuticollis*, *Gnaphaloryx velutinus*, *Prismognathus angularis* and *Nipponodorcus montivagus*. The two species, *Dorcus taiwanicus* and *A. laevicollis* are discovered newly. Therefore, Korean Lucanidae consists of 14 species of 10 genera.

Key words: Taxonomy, Coleoptera, Scarabaeoidea, Lucanidae, Korea.

### **INTRODUCTION**

Heyden (1887) first reported five species and 25 nominal species have been reported hitherto. However the previous reports have not been well reviewed taxonomically except the brief reports by Cho (1931) and Masui (1942). All the previous reports were reviewed and as a result 14 valid species are reported here with historical records, localities, other ecological data and description of newly recorded species.

The majority of the specimens examined are from Sungshin and Korea University, and a few (7 spp., 27exs.) in Hungarian Museum of Natural History (Budapest). The photos are taken with the stereomicroscope (LEICA MZ APO zoom) and SEM (JSM-5300LV, Jeol). The abbreviations of characteristics and localities are as follows: male aedeagus (Aed), everted internal sac of male genitalia (EIS), female genital plate of coxite (FGP), body length (BL), mandible length (ML), Hamkyöng bukdo-

---

This paper was supported by the grants for professors of Sungshin Women's University in 1997.

namdo (HB, HN), Pyöngan bukdo-namdo and Pyöngyang (PB, PN, PP), Kangwöndo (KW), Kyönggido and Seoul (KS), Ch'ungch'öng bukdo-namdo (CB, CN), Chölla bukdo-namdo (JB, JN), Chejudo (CJ), many sites in a city or country (-C, -K or -D).

## SYSTEMATIC ACCOUNTS

We find that seven species are synonymized and next six species are misidentified: *Prismognathus angularis*, *Nipponodorcus montivagus*, *Aegus laevicollis*, *Platycerus delicatulus*, *P. acuticollis*, *Gnaphaloryx velutinus*. The 1st and 2nd species misidentified are excluded from Korean fauna but the 3rd one, *A. laevicollis*, is relisted to Korean fauna because this species is discovered. And another species, *Dorcus taiwanicus* is newly recorded.

*Prismognathus angularis* Waterhouse was recorded by Nagaoka (1938) and Kim (1960), and cited by Cho (1967) and Ent. Soc. Kor. and Kor. Soc. Appl. Ent. (1994). But, this species distributes in Northern Japan and we have could not find Korean specimen. In our opinion, the recorders who were not Coleopteran specialist, identified this species with the small and blackish individual of *P. dauricus*.

We consider that *Nipponodorcus montivagus* (Lewis) by Heyden (1887), Cho (1931) and Haku (1936) is the small type of *Macroborcas recta*. This fact had been already clarified by Masui (1942), but the Ent. Soc. Kor. and Kor. Soc. Appl. Ent. (1994) was listed it again.

### ***Figulus venustus* Bomans, 1989 꼬마사슴벌레 (신칭) (Fig. 18)**

*Figulus venustus* Bomans, 1989, p. 16 (near Seoul).

**Specimens examined:** KN, Temple Ssanggye (1 ♀, 5 VI 1971, Chung).

**Distribution:** Korea.

### ***Aegus laevicollis* Saunders, 1854 꼬마넓적사슴벌레 (Figs. 1, 12, 19)**

**Specimens examined** (1 ♂, 1 ♀): KW, Hongch'ön (1 ♂, 3 VIII 1931, Cho); JN, Sohüksan Is. (1 ♀, 8 VIII 1970, Noh).

**Distribution:** Korea, China, Taiwan, Japan.

**Remarks:** This species name was recorded by Kim et Kim (1974) and the Korean name in Ent. Soc. Kor. and Kor. Soc. Appl. Ent. (1994) was based on this record. But, it is an error by misidentification of *Dorcus taiwanicus*. Therefore, the true first record of this species is our present paper and his Korean name follows the former.

### ***Platycerus hongwonpyoi* Imura et Choe, 1989 원표애보라사슴벌레 (Figs. 2, 13, 20)**

*Platycerus hongwonpyoi* Imura et Choe, 1989, p. 20; Kim, 1993, p. 64; Park et al., 1993, p. 177.

*Platycerus hongwonpyoi merkli* Imura et Choe, 1989, p. 21.

*Platycerus delicatulus*: Miwa, 1927: 29; Mochizuki et Tsunekawa, 1937, p. 90; Masui, 1942, p. 71; Cho, 1955, p. 208; 1957b, p. 116; 1969, p. 613; Kim et Kim, 1972a, p. 83.

*Platycerus acuticollis*: Kim, 1978, p. 314.

**Korean name:** 머클애보라사슴벌레 (Imura et Choe, 1989); 비단사슴벌레 (Cho, 1969; Kim et Kim, 1972a); 애보라사슴벌레 (Kim, 1978); 홍원표비단사슴벌레 (Ent. Soc. Kor. and Kor. Soc. Appl. Ent., 1994)

**Specimens examined** (17 exs.): KW, Mt. Gyeongju (1 ♀, 14 VI 1995); KS, Namyangju (1 ♀, 23 V 1996), Kwanglŭng (1 ♂, 2 VI 1994), Kwach'ŏn (1 ♂, 1 V 1993); CN, Mt. Gyeryong (1 ♂, 24 IV 1983); KB, Mt. Sobaek (1 ♀, 6 VI 1981); JB, Mt. Tŏkyu (2 ♂ ♂, 20 V 1983; 4 ♂ ♂, 5 ♀ ♀, 25 V 1993).

**Distribution:** Korea.

**Remarks:** Kim (1978) treated the present species as *P. acuticollis*, but Watanabe (1989) considered that they were not this species comparing the Korean samples with *P. acuticollis* described by Japanese samples. Many changes of the Korean name are mostly because of misidentification by same external morphology of this group.

***Lucanus maculifemoratus dybowskyi* Parry, 1887 사슴벌레 (Figs. 11, 30)**

*Lucanus maculifemoratus*: Heyden, 1887, p. 250; Miwa, 1927, p. 28; 1929, p. 73; Cho, 1931, p. 57; 1947, p. 65; 1956, p. 77; 1957b, p. 115; 1969, p. 605; Doi, 1932, p. 78; Kamijo, 1932, p. 20; Nakatomi, 1934, p. 655; Miwa et Chūjō, 1936, p. 1; Mochizuki, 1936, p. 211; Nagaoka, 1938, p. 25; Masui, 1942, p. 66; Ku, 1963, p. 27; Kim et Kim, 1971, p. 159; 1974, p. 107; 1976, p. 102; Lee et al., 1985, p. 417; Kim et al., 1986, p. 104; 1991a, p. 168; Kim, 1993, p. 64; Park et al., 1993, p. 177.

*Lucanus taiwanus*: Masui, 1942, p. 67.

*Lucanus dybowskyi*: Kim, 1978, p. 312; Yoon et al., 1989, p. 110; Kim et al., 1987, p. 505; 1990, p. 178; 1992, p. 153.

*Lucanus maculifemoratus dybowskyi*: Kim, 1994b, p. 163; 1995a, p. 139; 1995b, p. 173; Kim et al., 1994b, p. 147.

**Specimens examined** (22 ♂ ♂, 36 ♀ ♀): PB, Mt. Myohyang; KW, Inje Mt. Bangtae, Yangyang, Samch'ŏk, Mt. Gyeongju, P'yŏngch'ang, Ch'unch'ŏn-K, Hoengsŏng, Mt. Chiak; KS, Yŏnch'ŏn Mt. Yawŏl, Taebaek, Wŏnju, Kwanglŭng, Kap'yŏng Mt. Myŏggi et Ch'ŏngge, Changhŏng, Poch'ŏn, Mt. Yongmun; CB, Danyang, Chech'ŏn-K; KB, Bongwaha, Wulchin, Munk'yŏng, Mt. Sobaek, Mt. Juwang; KN, Mt. Jiri, Ch'angryŏng; JB, Muju kuch'ŏndong; JN, Kwangyang Mt. Baekun.

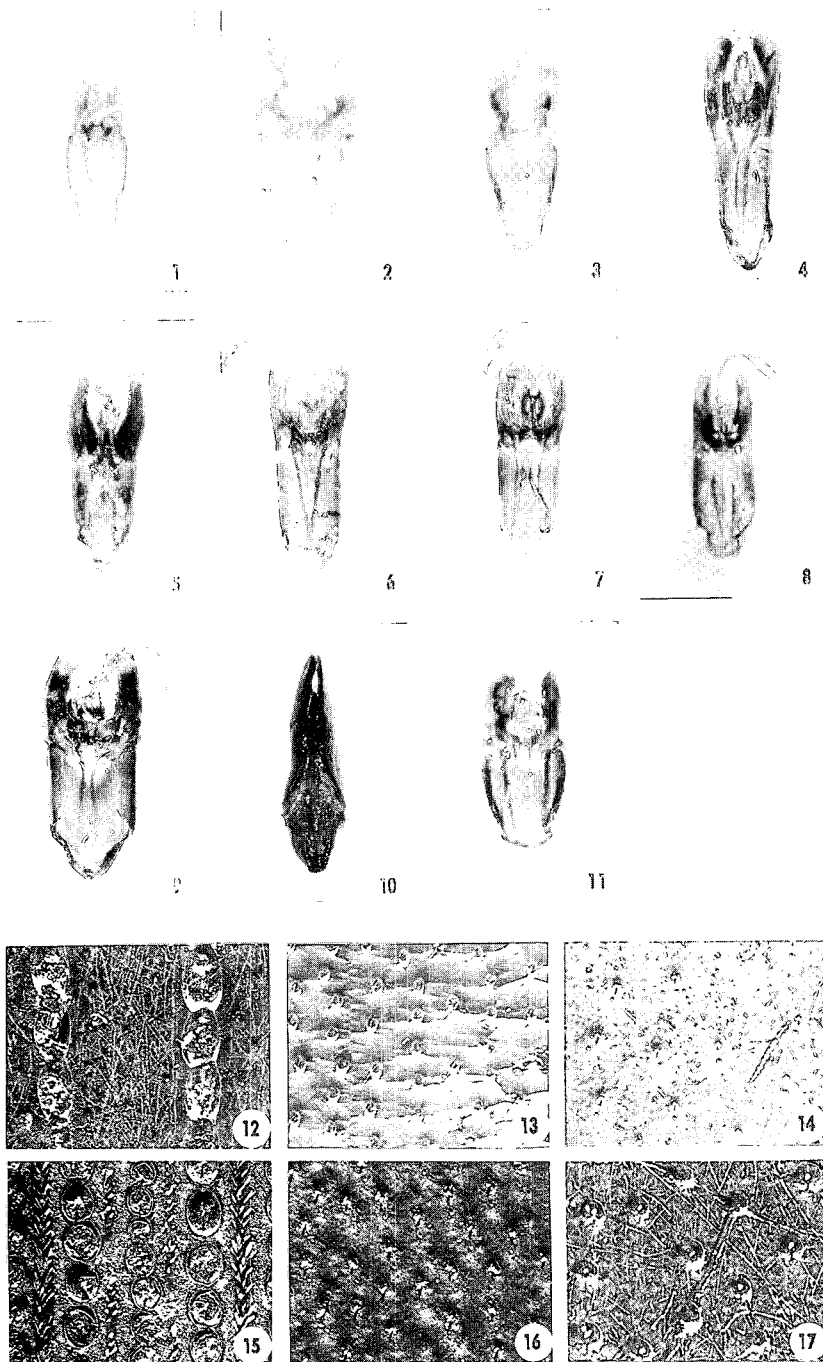
**Month of collection:** V- 3, VI- 8, VII- 13, VIII- 31, IX- 3exs.

**Distribution:** Korea, Northern China, Amur, Japan.

***Prismognathus dauricus* (Motschulsky), 1860 다우리아사슴벌레 (Figs. 3, 21)**

*Prismognathus dauricus*: Heyden, 1887, p. 250; Kim et Nam, 1978, p. 134; Kim, 1978, p. 311; Lee et al., 1985, p. 417; Yoon et al., 1989, p. 110; Kim et al., 1990, p. 178; Nomura et Lee, 1992, p. 88; Park et al., 1993, p. 177; Kim, 1993, p. 64; 1994b, p. 164; 1995a, p. 139; 1995b, p. 173.

*Prismognathus subaeneus*: Miwa, 1927, p. 28; 1932, p. 130; Cho, 1931, p. 58; 1947, p. 65; 1956, p. 78; 1957, p. 115; 1963, p. 216; 1969, p. 608; Nakatomi, 1934, p. 654; Mochizuki, 1936, p. 211; Miwa et Chūjō, 1936, p. 5; Mochizuki et Tsunekawa, 1937, p. 89; Mori et Cho, 1940, p. 13; Masui, 1942, p. 68; Cho et al., 1968, p. 264; Yoon et Nam, 1979, p. 148; Nam et



**Figs. 1-17.** 1-11, Male genitalia: 1, *Aegus laevicollis* ( $\times 25$ ); 2, *Platycerus hongwonpyoi* ( $\times 32$ ); 3, *Prismognathus dauricus* ( $\times 32$ ); 4, *Prosopocoilus inclinatus* ( $\times 20$ ); 5, *Dorcus hopei* ( $\times 16$ ); 6, *D. taiwanicus* ( $\times 32$ ); 7, *Nipponodorcus rubrofemoratus* ( $\times 20$ ); 8, *Macrodorcas recta* ( $\times 20$ ); 9, *Serrogathus platymelus castanicolor* ( $\times 20$ ); 10, *S. consentaneus* ( $\times 12.5$ ); 11, *Lucanus maculifemoratus dybowskyi* ( $\times 16$ ). 12-17, Elytral punctures: 12, *A. laevicollis*; 13, *P. hongwonpyoi*; 14, *D. hopei*; 15, *D. taiwanicus*; 16, *M. recta*; 17, *N. rubrofemoratus*.

Kim, 1982, p. 128.

**Korean name:** 산사슴벌레 (버레) (4 rep. after Cho, 1947), 다루리아사슴벌레 (9 rep. after Cho, 1969).

**Specimens examined** (43♂♂, 18♀♀): ?, Soktan; PB, Mt. Myohyang; KW, Kosong Mt. Kōnbong, Inje Mt. Kach'ilbong, Mt. Bangtae, Jōngsōn, Wōnju; KS, Mt. Chukryōng, Mt. Myōngji, Mt. Soyo, Poch'ōn, Sōngnam-C., Yongin, Mt. Yongmun; CB, Mt. Sokri; CN, Ch'ōnan, Sōsan; KB, Mt. Sobaek; KN, Mt. Jiri; JN, Mt. Baekun.

**Month of collection:** VII- 7, VIII- 50, IX- 4exs.

**Distribution:** Korea, Eastern and Northern China, Eastern Siberia, Japan.

***Prosopocoilus blanchardi* (Parry), 1873** 두점박이사슴벌레 (**Fig. 22**)

*Metopodontus blanchardi*: Cho, 1969, p. 607 (두점박이사슴벌레).

*Prosopocoilus blanchardi*: Nomura et Lee, 1992, p. 88.

**Specimens examined:** CJ, Chejudo (1♀, IX 1965; 1♀, ?), Temple Kwanūm (1♀, 28 VII 1968).

**Distribution:** Korea (Chejudo), Taiwan, China, Nepal (subsp.), Mongolia.

***Prosopocoilus inclinatus* (Motschulsky), 1858** 툽사슴벌레 (**Figs. 4, 23**)

*Psalidoremus inclinatus*: Kōno, 1926, p. 84; Miwa, 1927, p. 28; 1929, p. 74; Cho, 1931, p. 57; 1947, p. 65; 1955, p. 207; 1956, p. 77; 1957b, p. 115; 1963, p. 216; 1965, p. 39; 1969, p. 608; Kamijo, 1932, p. 20; Nakatomi, 1934, p. 655; Doi, 1935, p. 4; Haku, 1935, p. 58; Mochizuki, 1936, p. 211; Miwa et Chūjō, 1936, p. 4; Mochizuki et Tsunekawa, 1937, p. 89; Masui, 1942, p. 67; Ku, 1963, p. 27; 1966, p. 26; Hyun et Woo, 1969, p. 192; Kim et Kim, 1972b, p. 196; Yoon et Nam, 1979, p. 148; Lee et al., 1985, p. 418; Lee et Ko, 1988, p. 210.

*Psalidoremus inclinatus inflexus*: Cho, 1931: 58.

*Prosopocoilus inclinatus*: Kim et Kim, 1974, p. 107; 1976, p. 102; Kim et Nam, 1977, p. 130; 1981, p. 125; Lee et Kwon, 1981, p. 154; Kim et al., 1986, p. 104; 1990, p. 178; 1987, p. 505; 1991a, p. 168; 1991b, p. 191; 1991c, p. 134; 1992, p. 153; 1994a, p. 110; Park et al., 1993, p. 177; Kim, 1981, p. 345; 1993, p. 64; 1995b, p. 173; Nomura et Lee, 1992, p. 89.

*Metopodontus inclinatus*: Kim, 1978, p. 314; Kim et al., 1984, p. 105; Yoon et al., 1989, p. 110.

**Korean name:** 툽사슴벌레 (버레) (20 rep. after Cho, 1947).

**Specimens examined** (37♂♂, 46♀♀): ?, Soktan; KW, Kanglūng, Mt. Kūmgang, Kosong Kōjin, Myōnghori, Hakjap'yung, Mt. Sōrak, Mt. Odae, Mt. Sokūmgang, Myōngju Yōngok, Hongch'ōn, Wōnju; KS, 40 ex from 20 sites containing Is. Kangwha; CB, Mt. Sokri, Jungwōn Kūmgamyōn; CN, Ch'ōnan Mt. Kwangdōk, Sōsan, Mt. Gyeryong; KB, Mt. Joryōng, Bongwha; KN, Mt. Jiri; JB, Mt. Naejang, Koch'ang; JN, Mt. Baekun; CJ, Oradong.

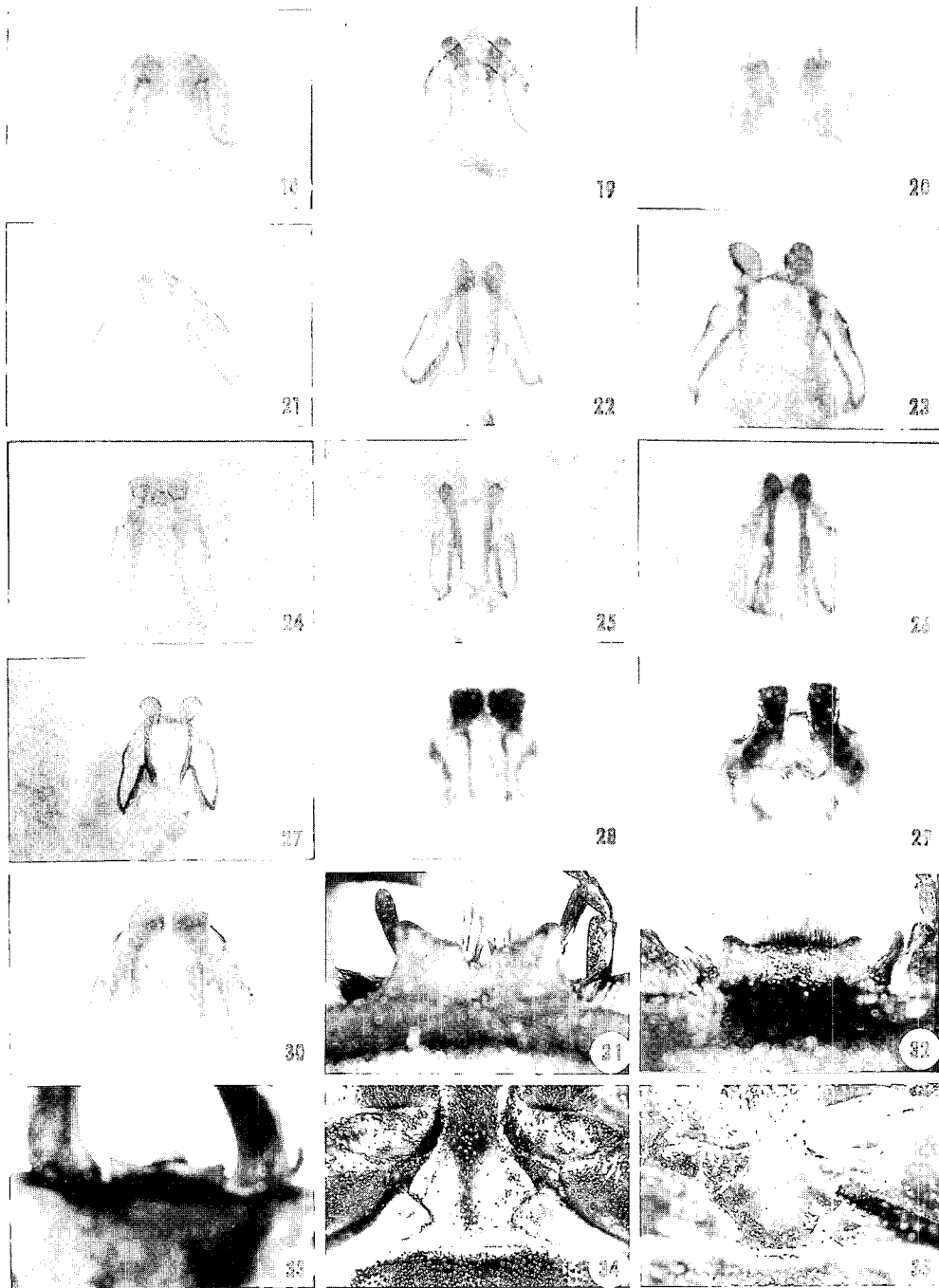
**Month of collection:** V- 1, VI- 13, VII- 50, VIII- 22, IX- 2exs.

**Host:** decayed wood of the oak trees and so on.

**Distribution:** Korea, Japan, Taiwan.

***Macrodorcas recta* (Motschulsky), 1861** 애사슴벌레 (**Figs. 8, 16, 27, 33**)

*Macrodorcas recta*: Heyden, 1887, p. 251; Park et al., 1993, p. 177; Kim, 1995a, p. 173



**Figs. 18-35.** 18-30, Female genitalia: 18, *Figulus venustus* ( $\times 32$ ); 19, *A. laevicollis* ( $\times 25$ ); 20, *P. hongwonpyoi* ( $\times 32$ ); 21, *P. dauricus* ( $\times 25$ ); 22, *Prosopocoilus blanchardi* ( $\times 20$ ); 23, *P. inclinatus* ( $\times 20$ ); 24, *D. hopei* ( $\times 16$ ); 25, *D. taiwanicus* ( $\times 32$ ); 26, *N. rubrofemoratus* ( $\times 20$ ); 27, *M. recta* ( $\times 20$ ); 28, *S. p. castanicolor* ( $\times 16$ ); 29, *S. consentaneus* ( $\times 20$ ); 30, *L. m. dybowskyi* ( $\times 20$ ); 31-33, Clypeus ( $\delta$ ): 31, *S. p. castanicolor* ( $\times 8$ ); 32, *S. consentaneus* ( $\times 8$ ); 33, *M. recta* ( $\times 10$ ). 34-35, Mesosternal process ( $\text{♀}$ ): 34, *S. p. castanicolor* ( $\times 8$ ); 35, *S. consentaneus* ( $\times 8$ ).

(above -us); Kim *et al.*, 1994a, p. 110.

*Macrodorcus rectus*: Kôno, 1926, p. 91; Haku, 1936, p. 121; Morita, 1936, p. 862; Miwa et Chûjô, 1936, p. 5; Mochizuki et Tsunekawa, 1937, p. 89; Masui, 1942, p. 68; Cho, 1955, p. 208; 1957a, p. 61; 1957b, p. 115; 1965, p. 39; 1969, p. 611; Ku, 1963, p. 27; Kim et Kim, 1972b, p. 196; Kim, 1978, p. 313; Yoon et Nam, 1979, p. 148; 1985, p. 157; Kim et Nam, 1981, p. 125; Park et Cho, 1985, p. 127; Lee *et al.*, 1985, p. 417; Kim *et al.*, 1982, p. 145; 1987, p. 505; 1990, p. 178; 1991c, p. 134; Nomura et Lee, 1992, p. 89.

*Eurytrachelus rectus*: Miwa, 1927, p. 29; Cho, 1931, p. 58.

**Korean name:** 애사슴벌레 (12 rep. after Cho, 1957a.).

**Specimens examined** (25 ♂♂, 33 ♀♀): KW, Inje Mt. Bangtae, Kanglŭng, Sokcho, P'yŏngch'ang-K, Wŏnju, Taebaek; KS, 31exs. from 18 sites except central city of Seoul; CB, Mt. Sokri; CN, Ch'ŏnan Mt. Kwangdŏk; KB, Mt. Joryŏng, Bongwha.

**Month of collection:** III- 1, V- 2, VI- 17, VII- 19, VIII- 12, IX- 7exs.

**Host:** dead wood of the oak, camphor or older trees.

**Distribution:** Korea, China, Japan.

***Macrodorcas striatipennis* (Motschulsky), 1861** 줄사슴벌레

*Eurytrachelus striatipennis*: Miwa, 1927, p. 29; Cho, 1931, p. 59.

*Macrodorcas striatipennis*: Miwa et Chûjô, 1936, p. 6; Masui, 1942, p. 68; Cho, 1957b, p. 115; 1969, p. 611; Kim, 1978, p. 314.

**Korean name:** 줄사슴벌레 (Cho, 1969; Kim, 1978).

**Localities reported:** KW, Hongchŏn; KS, Kwanglŭng; KN, Chungsanri.

**Distribution:** Korea, China, Taiwan, Japan.

***Nipponodorcus rubrofemoratus* (S. van Vollenhoven), 1865** 흉다리사슴벌레 (Figs. 7, 17, 26)

*Nipponodorcus rubrofemoratus*: Cho, 1969, p. 612; Kim, 1978, p. 308; Kim et Nam, 1978, p. 134; Lee et Kwon, 1981, p. 154; Nam et Kim, 1982, p. 128; Yoon *et al.*, 1989, p. 110; Kim *et al.*, 1990, p. 178; 1992, p. 153; Park *et al.*, 1993, p. 177; Kim, 1993, p. 64; 1994b, p. 164; 1995, p. 173.

*Eurytrachelus rubrofemoratus*: Miwa, 1927, p. 29; Cho, 1931, p. 59; 1947, p. 65; 1955, p. 208; Nakatomi, 1934, p. 655.

*Macrodorcus rubrofemoratus*: Kono, 1926, p. 91; Miwa et Chûjô, 1936, p. 5; Cho, 1957b, p. 115; 1965, p. 39; Cho *et al.*, 1967, p. 197; Hyun et Woo, 1969, p. 192; Park et Cho, 1985, p. 127; Mochizuki et Tsunekawa, 1937, p. 90; Masui, 1942, p. 69; Kim, 1958, p. 91; 1960, p. 26.

*Dorcus rubrofemoratus*: Kim *et al.*, 1991a, p. 168; 1991b, p. 191.

**Korean name:** 흉다리사슴벌레 (버레) (9 rep. after Cho, 1947).

**Specimens examined** (8 ♂♂, 24 ♀♀, 8exs.): PB, Mt. Myohyang; PP, P'yŏngyang; KW, Kosŏng, Inje Mt. Bangtae, P'yŏngch'ang, Mt. Ch'iak, Wonju; KS, Mt. Ch'ukryŏng, Mt. Ch'ŏnma, Kwanglŭng; KB, Mt. Joryŏng, Mt. Sobaek; KN, Mt. Jiri; JB, Mt. Tŏkyu; JN, Kwangyang, Mt. Baekun.

**Month of collection:** VI-2, VII-18, VIII-17, IX-3exs.

**Host:** Willow trees.

**Distribution:** Korea, Japan, Taiwan, China, Miyanma.

***Dorcus hopei* (E. Saunders), 1854 왕사슴벌레 (Figs. 5, 14, 24)**

*Dorcus hopei*: Miwa, 1927, p. 29; Cho, 1931, p. 59; 1947, p. 65; 1957a, p. 61; 1957b, p. 116; Nakatomi, 1934, p. 654; Mochizuki, 1936, p. 211; Miwa et Chûjô, 1936, p. 7; Mochizuki et Tsunekawa, 1937, p. 90; Masui, 1942, p. 70; Yang et Yoon, 1962, p. 11; Kim, 1993, p. 64.

*Dorcus curvidens*: Kim et Kim, 1974, p. 107; Kim, 1978, p. 307.

*Dorcus formosanus*: Doi, 1935, p. 60; Doi et Mochizuki, 1935; Cho, 1947, p. 65.

**Korean name:** 대만왕사슴벌레 (*for.*= Cho, 1947); 왕사슴벌레 (*hop.*= Cho, 1947); 왕사슴벌레 (*hop.*= Cho, 1957a; *curv.*= Kim et al. 1974; Kim, 1978).

**Specimens examined** (12 exs.): KW, Mt. Kûmgang (13 VIII 1934, 7 VIII 1975, 12 VII 1991); KS, Kaesöng (VIII 1929), Kwanglûng (21 VIII 1958, 20 VII 1975, 20 IX 1975, 12 VIII 1991, 1 X 1994); CN, Asan (25 VII 1992); JN, Mt. Baekyang (4-5 VIII 1974).

**Host:** Cherry trees.

**Distribution:** Korea, China, Japan.

***Dorcus taiwanicus* Nakane et S. Makino, 1985 대만왕사슴벌레 (신칭) (Figs. 6, 15, 25)**

**Specimens examined** (1 ♂, 4 ♀ ♀): KS, Kwanglûng (1 ♀, 9 VIII 1991, Won); JN, Mt. Baekyang (1 ♂ 2 ♀ ♀, 4-5 VIII 1974, Kim), Haenam (1 ♀, 5 VIII 1986, Paik).

**Description.** Small, black, very rugged, without lustre, covered with mud-like substance. Ocular canthus extended to 3/4 of compound eye. Dorsal punctures large, irregularly jointed, with a bundle of erected, thick and brownish black hairs. Mandibles very short, with large basal part, a internal tooth short, large at upper surface of near apical part. Pronotal hind angles variable. Elytra with some erect bundles rowed, thick hairs in 5 striae. BL: 15-21 mm (♂), 15-18 mm (♀). ML: 1-4 mm. Aed: shorter than basal piece, EIS: 2 times as large as aedeagus divided to 3 branches, middle one more longer, larger than side ones. FGP: long, slender, apical part rounded, narrowed at terminal part.

**Distribution:** Korea, Taiwan.

**Remarks:** This species separated from *Dorcus velutinus* group of Taiwan by Nakane (1985), and we found also it from Korea. The species, *D. velutinus* was belonging to the genus *Gnaphaloryx*, but it was combined to *Dorcus*. Masui (1942) reported a pair of *G. velutinus* from Mt. Bogae (KS: 12, 17 VIII 1939) but we can not examine his specimens. By his description etc., this species is *Dorcus taiwanicus* and this name must be excluded from Korean list.

***Serrognathus platymelus castanicolor* Motschulsky, 1861 넓적사슴벌레 (Figs. 9, 28, 31, 34)**

*Eurytrachelus platymelus*: Heyden, 1887, p. 250; Okamoto, 1924, p. 169; Miwa, 1927, p. 29; Cho, 1931, p. 58; 1947, p. 65; 1956, p. 77; 1957b, p. 116; 1963, p. 216; 1969, p. 610; Kamijo, 1932, p. 20; Haku, 1935, p. 58; 1936, p. 121; Mochizuki, 1936, p. 211; Masaki, 1936, p. 261; Miwa et Chûjô, 1936, p. 6; Mochizuki et Tsunekawa, 1937, p. 89; Mori et Cho, 1938, p. 36; Kim et Kim, 1974, p. 107; Shin, 1978, p. 143; Lee et Ko, 1988, p. 220; (next *E-llus*): Miwa et Chûjô, 1936, p. 6; Masui, 1942, p. 69; Kim, 1956, p. 342; Ku, 1963, p. 27; 1966, p. 26; Cho et al., 1968, p. 264; Won et Choi, 1968, p. 379; Hyun et Woo, 1969, p. 192.



*Macrodorcus platymelus*: Morita, 1936, p. 862.

*Dorcus titanus*: Kim et Kim, 1972b, p. 196; Shin et Park, 1980, p. 131; Lee et al., 1981, p. 82.

*Serrognathus titanus castanicolor*: Kim, 1978, p. 309; Yoon et al., 1979, p. 148; 1989, p. 110; Lee et Kwon, 1981, p. 154; Kim et Nam, 1981, p. 125; Park et al., 1985, p. 127; 1993, p. 177; Nomura et Lee, 1992, p. 90.

*Serrognathus platymelus*: Kim et al., 1982, p. 145; 1989, p. 176.

*Serrognathus platymelus castanicolor*: Nomura et Lee, 1992, p. 92; Kim et al., 1987, p. 505; 1990, p. 178; 1991c, p. 134; Kim, 1994a, p. 214; 1995a, p. 139; 1995b, p. 173.

**Korean name:** 판사슴벌레 (Cho, 1947); 넓적사슴벌레 (15 rep. after Cho, 1956); 대마도넓적사슴벌레 (6 rep. after Kim, 1978).

**Specimens examined** (98 ♂♂, 38 ♀♀, 10exs.): PN, Myöngsin; KW, Mt. Kümgang, Mt. Sörak, Kanglŭng, Yangyang, Samch'ök, Myöngju Samsan, P'yungchang-K, Wönju, Jöngsön, Imgye; KS, 73exs. from 43 sites containing Seoul and some islands; CB, Ch'ungju, Mt. Wölak, Danyang, Ch'öngju, Mt. Sokri; CN, Ch'önan, Chöngyang, Mt. Kwangdök, Onyang, Asan, Is. Anmyön, Sösan, Mallipo, Gongju, Mt. Gyeryong, Tangchin; KB, Kyöngsan, Wulsan, Üisöng, Köchang; KN, Mt. Jiri, Ch'angryung, Jinju, Is. Köje; JB, Buan, Koch'ang, Kimche, Namwön, Mt. Naejang; JN, Muan, Yöngkwang, Is. Songyi, Kwangyang, Is. Kümo; CJ, Cheju-D.

**Month of Collection:** IV-1, V-6, VI-12, VII-34, VIII-62, IX-26, XII-1ex.

**Host:** wooden part of the oak or camphor tree.

**Distribution:** Korea, China (Central-South, original form), Japan (other subsp.).

**Remarks:** This species seems to be the dominant one of Korean Lucanidae, and the type is a subspecies *castanicolor* which has the mandible very long and the pronotum of narrow and weak marginal process.

***Serrognathus consentaneus* (Albers), 1886 참넓적사슴벌레 (Figs. 10, 29, 32, 35)**

*Dorcus* (*Serrognathus*) *fasolt*: Nomura, 1962, p. 35.

*Serrognathus consentaneus*: Kurosawa, 1970, p. 289; Kim, 1978, p. 310 (*consetaneus*); Nam et Kim, 1982, p. 128; Kim et Nam, 1985, p. 103; Kim et al., 1984, p. 105; Yoon et Nam, 1985, p. 157; Kim et al., 1987, p. 505; 1990, p. 178; Kim 1995a, p. 139; Nomura et Lee, 1992, p. 91.

**Korean name:** 넓적사슴벌레 (5 rep. after Kim, 1978); 참넓적사슴벌레 (Ent. Soc. Kor. and Kor. Soc. Appl. Ent., 1994; Kim, 1995a).

**Specimens examined** (42 ♂♂, 9 ♀♀): KW, Kanglŭng; KS, 44exs. from about 25 sites containing Seoul and some islands; CB, Chech'ön, Boün, Mt. Sokri; CN, Mt. Gyeryong; KB, Sangju; KN, Hapch'ön; JB, Mt. Naejang, Naepyönsan, Mt. Jiri; JN, Haenam Mt. Daedun; CJ, Cheju-D.

**Month of collection:** V-3, VI-13, VII-14, VIII-14, IX-7exs.

**Host:** Oak trees.

**Distribution:** Korea, China, Is. Tsusima.

## REFERENCES

Bomans, H.E., 1989. Nouvelles notes sur le Genere *FIGULUS* Macleay et description d'espèces nouvelles.

Science nat. Bull., **63**: 16-17.

- Cho, P.S., 1931. A list of Lucanidae from Korea. J. Chosen Nat. Hist. Soc., **12**: 56-61. pl.3.
- Cho, P.S., 1947. The Fauna of the Mt. Diamond in Korea. Bull. Zoo. Nat. Sci. Mus., **2** (3): 43-100.
- Cho, P.S., 1955. The fauna Dagelet Island (ulnung-do). Sungkyunk Univ. Bull., **2**: 208.
- Cho, P.S., 1956. Sexual dimorphism of Korean Insects (I). The Kor. J. Biology, **1** (1): 76-78.
- Cho, P.S., 1957a. Sexual Dimorphism of Korean Insects (II). The Kor. J. Biology, **2** (1): 61.
- Cho, P.S., 1957b. A Systematic Catalog of Korean Coleoptera; Lucanidae. Hum. & Sci., Korea Univ., **2**: 115-116.
- Cho, P.S., 1963. Insect of Querlpart Island. Hum. & Sci., Korea Univ., **6**: 159-242.
- Cho, P.S., 1965. Beiträge zur Kenntnis der Insekten-Fauna. Comm. Thes. 60th. Anniv. Korea Univ., Nat. Hist. Soc., **13**: 38-39.
- Cho, P.S., 1967. Report of Academic Survey of Mt. Sörak. Ministry of Education, pp. 160-203.
- Cho, P.S., 1969. Coleoptera, in: Illustrated Encyclopedia of Fauna & Flora of Korea, **10** (Ins. II): 604-615.
- Cho, P.S. *et al.*, 1968. Report of Academic Survey of Mt. Halla and Is. Hongdo. Ministry of Culture and Information, pp. 258-379.
- Doi, H., 1932. Insect of Mt. Soyo. J. Chosen Nat. Hist. Soc., **14**: 78.
- Doi, H., 1935. Chisiki no Kakalog kando. J. Chosen Nat. Hist. Soc., **20** (6): 61.
- Doi, H. and Mochizuki, 1935. *Dorcus formosanus* from Chosen. Kontyû, **9** (1): 53.
- Ent. Soc. Kor. & Kor. Soc. Appl. Ent., 1994. Check list of insects from Korea. Kon-Kuk Univ. Press, pp. 145-146.
- Haku, K., 1935. Insects collected with light trap. Ent. World, **3**: 58.
- Haku, K., 1936. A list of Insects Collected from North Keisho-Do, Korea. J. Chosen Nat. Hist. Soc., **22**: 121.
- Heyden L., 1887. Verzeichniss der von Herrn Otto Herz auf der chinesischen Halbinsel Korea gesammelten Coleoptereren. Horae Soc. ent. ross., **21**: 243-273.
- Hyun, J.S. and K.S. Woo., 1969. Insect Fauna of Mt. Jiri (I). Bull. Seoul N. Univ. Forest, **6**: 192.
- Imura, Y. and K.R. Choe, 1989. A New Species and its subspecies of the Genus *Platyserus* from Korea (Coleoptera, Luc.). The Kor. J. of Ent., **19** (1): 19-24.
- Kamijo, N., 1932. On a Collection of Insects from North Keisho-Do, Korea. J. Chosen Nat. Hist. Soc., **13**: 20.
- Kim, C.W., 1978. Distribution Atlas of Insects of Korea. Korea Univ. Press, **2**: 307-314.
- Kim, C.W., C.E. Lee, H.C. Park, S.H. Nam and Y.J. Kwon, 1984. Insect fauna of Mt. Chuwang in summer season. Rep. KACN, **23**: 93-110.
- Kim, C.W. and J.I. Kim, 1971. Report Prelim Survey Mt. Odae & Sogumgang. Min. Cult., p. 159.
- Kim, C.W. and J.I. Kim, 1972a. A Report on the scientific survey of Gucheondong. Muju-Gun. Rep. KACN, **5**: 65-101.
- Kim, C.W. and J.I. Kim, 1972b. A Report on the scientific survey of Mt. Daedun, Haenam-Gun. Rep. KACN, **6**: 189-200.
- Kim, C.W. and J.I. Kim, 1974. Insect fauna of National Park, Mt. Naejang in summer season. Rep. KACN, **8**: 95-126.
- Kim, C.W. and J.I. Kim, 1976. A Report on the scientific survey of Mt. Chi-ak area. Rep. KACN, **9**: 90-113.
- Kim, C.W. and S.H. Nam, 1977. A Report on the scientific survey of Mt. Jogyesan Area. Rep. KACN, **11**: 119-140.
- Kim, C.W. and S.H. Nam, 1978. A Report on the scientific survey of estimated area of the Imgye Reservoir &

- Jeon-choen River. Rep. KACN, **13**: 125-142.
- Kim, C.W. and S.H. Nam, 1981. Insect fauna in the area of Mt. Gyeong, Sogyeong and Gachilbong in summer season. Rep. KACN, **20**: 119-137.
- Kim, C.W. and S.H. Nam, 1985. Insect fauna of Mt. Paegun P'ochon-gun, Kyonggi-do. Seoul · Kyonggi branch of KACN, pp. 95-107.
- Kim, J.I., 1981. The faunistic study on the insects from Sudong-myeon, Namyangju-gun, Gyeonggi-do, Korea. Bull. KACN, **3**: 329-367.
- Kim, J.I., 1993. Specimen list of North Korean Scarabaeoidea conserved in Hungarian Natural History Museum (II). J. Basic Sci. Sungshin, **11**: 59-70.
- Kim, J.I., 1994a. Insect fauna from Kumo Archipelago, Chollanam-do, Korea (Coleoptera and Diptera). Rep. KACN, **32**: 211-217.
- Kim, J.I., 1994b. Coleoptera and Diptera (Insecta) from Mt. Sobaek. Rep. KACN, **33**: 157-179.
- Kim, J.I., 1995a. Fauna of Coleoptera and Diptera (Insecta) from Pyonsan Peninsula National Park. Rep. KACN, **34**: 129-145.
- Kim, J.I., 1995b. Insect fauna of Coleoptera and Diptera from Mt. Pangtae in summer season. Rep. KACN, **35**: 163-180.
- Kim, J.I. and K.S. Chang, 1982. On the summer seasonal insect from the Deogjeog Archipelago. Rep. Survey. Nat. Envir. Kor., **1**: 145.
- Kim, J.I. and K.S. Chang, 1986. Insect fauna of the Mt. Taebaek in Korea. Rep. KACN, **25**: 91-120.
- Kim, J.I. and H.J. Yoo, 1987. Study on the insect fauna and its change from near the DMZ of the Province Kyonggi-do, Korea. Rep. Envir., **V**: 297-390.
- Kim, J.I. and O.J. Lee, 1989. Insect fauna from the group of Islands Anma. Rep. Surv. Nat. Envir., Kor., **9**: 176.
- Kim, J.I., B.J. Kim, O.J. Lee and H.C. Park, 1990. Faunistic study on the Insect from Mt. Songni, Rep. KACN, **29**: 163-193.
- Kim, J.I., O.J. Lee and S.H. Jeon, 1991a. Survey of Chojong stream area (Insects). '91 Surv. Nat. Ecosyst. Area, Min. Envir., pp. 139-185.
- Kim, J.I. and H.C. Park, 1991b. The survey on the entomofauna at the Mt. Mugap under the resting-year scheme in the province Kyonggi, the first year rep. Rep. Surv. Mt. Myongji & Mugap. Rep. Ar. det. surv. Ecosyst. Area, Min. Envir., pp. 145-208.
- Kim, J.I., H.C. Park and K.D. Han, 1991c. Insect fauna of the west coast (the south of Kangwha Is.). '91 surv. Nat. Ecosyt. Area, Min. Envir., pp. 119-152.
- Kim, J.I., B.J. Kim, O.J. Lee and H.C. Park, 1992. Study of the insect fauna from the northern area of civilian control line neighbouring DMA, South Korea. Rep. Acad. Surv. near DMZ, Min. Cult., pp. 129-162.
- Kim, J.I., J.M. Park, S.Y. Kim and H.S. Choe, 1994a. Insect fauna of Coleoptera, Hymenoptera and Diptera in Mt. Kwangdök. Rep. Ar. det. surv. Ecosyst., '94 Min. Envir., pp. 101-116.
- Kim, J.I., S.Y. Kim and E.J. Lee, 1994b. Insect fauna from Mt. Kyebang, Kangwon-Do, Korea. Rep. Ar. det. surv. Ecosyst., '93 Min. Envir., pp. 135-158.
- Kim, H.K., 1956. The insect fauna of Deojeogdo, Korea. Comm. Thes. 70th Anniv. Ewha Univ., pp.335-348.
- Kim, H.K., 1958. Insect fauna of Deogjeog Island (II). J. Appl. Zool. **1** (1): 87-102.
- Kim, H.K., 1960. List of Mt. Sorak. Jr. Appl. Zool., **3** (1): 21-29.
- Kono, 1926. Trans. Nat. Hist. Soc. Formosa, **16** (84): 88-91.
- Ku, K. 1963. Insect of Mt. Myung-ji. Kor. J. Zool., **6** (1): 25-28.

- Ku, K. 1966. A collection list of insect from the Osan. Kor. J. Zool., **9** (2): 26.
- Lee, C.E. and Y.J. Kwon, 1981. On the insect fauna of Ulreung Is. and Dogdo Is. in Korea. Rep. KACN, **19**: 139-178.
- Lee, H.P. and G.S. Ko, 1988. Insect fauna in the Oeyön Islands in summer. Rep. Surv. Nat. Envir. Korea, **8**: 197-220.
- Lee, S.G., K. Jeong and K. S. Woo, 1981. Insect Fauna of Mt. Jiri (III). Bull. Seoul N. Univ. Forest, **17**: 82.
- Lee, Y.I., W.T. Kim and D.H. Kim, 1985. Insect fauna of Mt. Halla. Rep. Acad. Surv. Mt. Halla Nat. Pres., (Cheju-do), pp. 351-455.
- Masaki, J., 1936. On the Insect-fauna of various Islands of Korea (1). Kontyû, **10** (5): 261.
- Masui, M., 1938. A list of Lucanidae of from Korea. Rep. Sci. Keikyu, **3**: 4-17.
- Masui, M., 1942. Lucanidae aus Korea. J. Chosen Nat. Hist. Soc., **9** (35): 66-72.
- Miwa, Y., 1927. A list of Japanese Lucanidae, with the description of one new species. Ins. Mats., **2** (1): 25-31.
- Miwa, Y., 1929. An Addition to list of Lucanid-species from the Japanese Empire. Ins. Mats., **3** (2-3): 72-76.
- Miwa, Y., 1932. A Study on the Lucanidae-Coleoptera from the Japanese Empire 3. Trans. Nat. Hist. Soc. Formosa, **22**: 123-132.
- Miwa, Y. and Chûjô, M., 1936. Family Lucanidae. Cat. Col. Jap., pp. 1-11.
- Mochizuki, M., 1936. A List of Coleoptera on Mt. Kongo in Chosen. Kontyû, **10** (4): 211.
- Mochizuki, M. and Tsunekawa, 1937. A List of Coleoptera from Middle-Korea. J. Chosen Nat. Hist. Soc., **22**: 88-90.
- Mori et P.S. Cho., 1940. List Animal Collecting Mt. Diamond. pp. 20.
- Morita, C., 1936. A list on Coleoptera from Gunzan Chosen. Ent. World, **4** (40): 852-862.
- Nagaoka, N., 1938. Insect-Fauna of Mt. Myôkô in Western Korea. Ent. World, **5** (46): 22-29.
- Nakane, T. and S. Makino, 1985. On the stag beetles belonging to *Dorcus velutinus* group from Japan and Taiwan (Coleoptera, Lucanidae). Gekkan-Mushi, **169**: 18-25.
- Nakatomi, K., 1934. Miscellaneous notes of beetles collections. Ent. World, **2** (12): 654-655.
- Nam, S.H. et M.R. Kim, 1982. On the relation between the insects and the forest-types of Piagol valley in Mt. Chiri. Rep. KACN, **21**: 123-136.
- Nomura, S., 1962. Some new and remarkable species of the Coleoptera from Japan and its adjacent regions. Toho-Gakuhô, **12**: 35-38.
- Nomura, S. and C.E. Lee, 1992. Taxonomic notes on the stag-beetles know from Chejudo Island. Korea. Esakia, **32**: 87-92.
- Okamoto, H., 1924. The Insect fauna of Quelpart Island. Bull. Agr. Exp. Sta. Gov. Gen. Chosen, **1** (2): 169.
- Park, C.S. and H.W. Cho, 1985. Insect fauna in the areas of Mt. Paegun, Mt. Kipaeg and Mt. Hwansök in summer season. Rep. KACN, **24**: 123-138.
- Park, C.S., D.S. Ku and K.D. Han, 1993. Faunistic study on the Insect from Hamyang-gun and Paemsagol area of Mt. Chiri. Rep. KACN, **31**: 153-217.
- Shin, Y.H., 1978. Insect fauna of Mt. Wolak and Mt. Juheul in summer. Rep. KACN, **15**: 135-146.
- Shin, Y.H. and K.T. Park, 1980. On the summer insect fauna of the Gogunsan Islands and Bian Island western coast of Korea. Rep. KACN, **18**: 127-141.
- Yang, S.Y. et I. B. Yoon, 1962. The fauna of Kur-moon Island, Korea. Zoologica Seoul N. Univ., **1**: 11.
- Yoon, I.B., H.C. Park, K.D. Han and C.S. Kim, 1989. A faunistic study of terrestrial Insects in the Mt. Kaya National Park. Rep. KACN, **28**: 99-128.

Yoon, I.B. and S.H. Nam, 1979, Insect fauna of Mt. Chilgab and Mt. Gyeryong area. Rep. KACN, **17**: 129-158.

Yoon, I.B. and S.H. Nam, 1985. Insect fauna of Ch'uja Is. Rep. Surv. nat. Envir. Kor., **5**: 143-169.

Watanabe, T., 1989. The *Platycerus* sp. of Korea. Nature and Insect, Tokyo, **24** (8): 29-32.

RECEIVED: 26 December 1997

ACCEPTED: 4 February 1998

### 韓國産 사슴벌레科(딱정벌레目: 풍뎅이上科)의 分類學的 檢討

김진일·김수연

(성신여자대학교 생물학과)

#### 적 요

韓國産 사슴벌레科의 문헌기록과 표본을 분류학적으로 검토하였다. 이들은 Heyden(1887) 이후 90여편의 문헌에서(외국에서의 단순한 분포기록 문헌 제외) 25종이 기록되었다. 그 중 7종은 동종이명이었고, 다음과 같은 6종은 오동정된 것이므로 한국산 목록에서 제외된다: *Prismognathus angularis*, *Nipponodorcus montivagus*, *Aegus laevicollis*, *Platycerus delicatulus*, *P. acuticollis*, *Gnaphaloryx velutinus*.

오동정된 종명중 처음의 2종은 국내기록 자체가 잘못된 것이며, 세번째의 *A. laevicollis*는 이에 해당하는 표본이 새로 발견되어 다시 한국산 목록에 추가된다. 한편 *Dorcus taiwanicus*도 새로 발견되어 한국산 추가종은 실제적으로 2종이다. 결과적으로 현재까지 한국산으로 밝혀진 사슴벌레과 곤충은 10속 14종이 된다.