

A New Species, *Acanthobelba heterosetosa*, of Oribatid Mite from Mt. Jiri in Korea*

Choi, Seong-Sik

(Department of Agronomy, Wonkwang Univ., Iksan 570-749, Korea)

한국산 날개응애 1신종, 곧은뉘시바늘염주응애

崔 星 植

(圓光大 生命資源科學大學 農學科)

ABSTRACT

Compared with type specimen *Acanthobelba tortuosa* Enami and Aoki, 1993, a new species, *A. heterosetosa* sp. nov., of oribatid mites collected from Mt. Jiri has the following characteristic figures. Sensillus is long, slightly thickened at distal part, and covered with barbs sparsely. A pair of prodorsal tubercles *Da* are present. Notogastral frontal tubercles *sa* is elongated rather than hooked. Dorsal setae are not the same in shape and length; setae *c1* and *c2* are thick, blunt at tip, covered with small barbs and curved several times, but others are smooth.

Key words : Taxonomy, Acari, Oribatid mites, Korea

Introduction

Mt. Jiri (sea level 1,915m) located at the southern part of Korea is the highest and largest mountain and has diverse flora. While investigating oribatid mites from the mountain, I found a new species which is recorded as the second member of the genus *Acanthobelba* established by Enami and Aoki in 1993 from Japan.

Description

Family Damaeidae Berlese, 1896
Genus *Acanthobelba* Enami et Aoki, 1993
Acanthobelba heterosetosa sp. nov.
곧은뉘시바늘염주응애
(Fig. 1)

This study was supported in part by a grant from the Korea Science and Engineering Foundation, Pro. No. 95-0402-04-01-3.

Material examined. Holotype : Mt. Jiri(Imgeolryung), Unbong, Namweon-gun, Chonbuk, 25-VIII-1996, S. S. Choi. Six paratypes ; the same data as the holotype. Sixteen paratypes ; Mt. Jiri(Nogodan), Unbong, Namweon-gun, Chonbuk, 8-IX-1996, S. S. Choi. The specimens are deposited in Lab. Plant Protection, Coll. of Agri., Wonkwang Univ., Korea.

Measurement. Body length ; 356(364)384 μ m, width ; 200(206)212 μ m.

Prodorsum. Relatively broad triangular in outline. Setae *ro* and *le* smooth, attenuated,

slightly incurved or flagellate at distal part and inserted laterally ; mutual distance of seta *ro* shorter than that of *le*. Seta *ex* smooth and shorter than other prodorsal setae. Interlamellar seta *in* relatively thick, blunt at tip and rough except basal part. Tubercle *Da* relatively small and round or triangular. Sensillus long, slightly thickened at distal part, and covered with barbs sparsely. Bothridium large, tuberculate and its rim very large and open posterolaterally.

Notogaster. Slightly elliptical in outline except anterior border and nearly straight or slightly

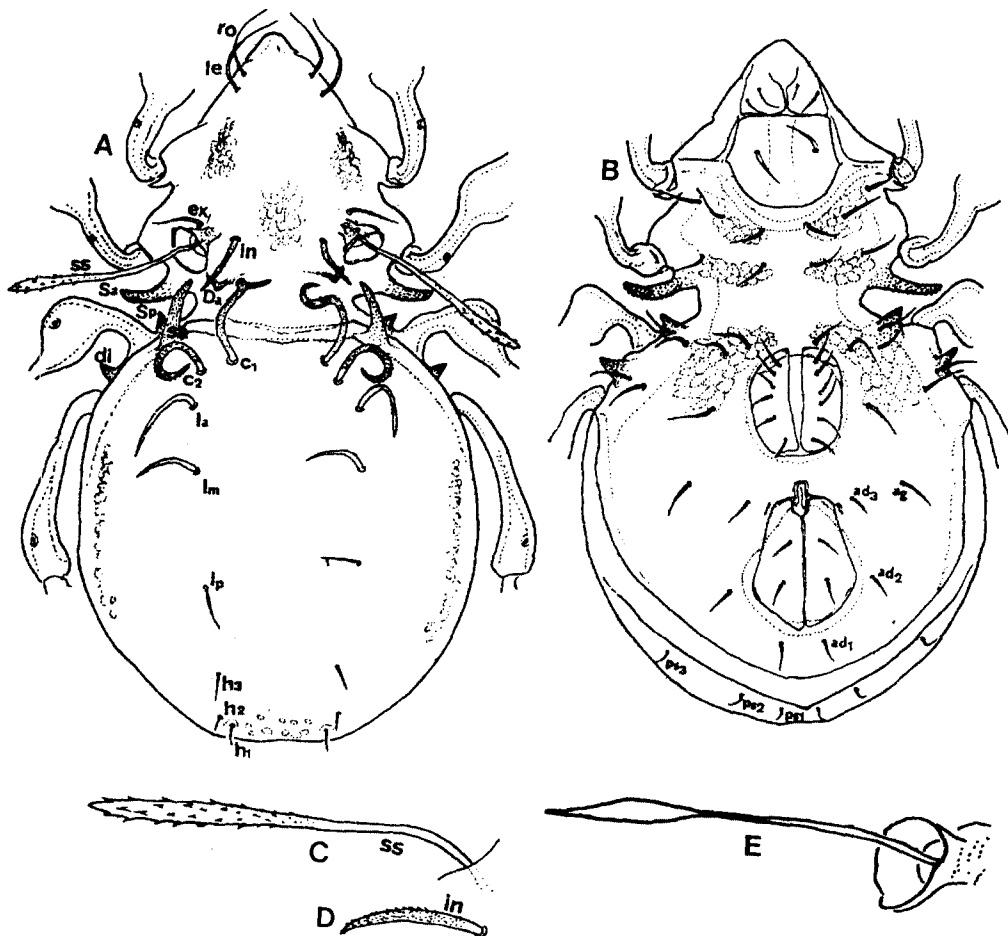


Fig 1. *Acanthobelba heterosetosa* sp. nov.

A : Dorsal, B : Ventral, C : Sensillus, D : Interlamellar seta,

E : Sensillus of *A. tortuosa* Enami et Aoki, 1993

concave. Spinae adnate *sa* strongly developed, covered with microtubercles, darkened and slightly incurved. Notogastral setae *c1* and *c2* relatively thick, blunt at tip, and covered with small barbs except basal part. Seta *c1* longer than *c2* and strongly curved or twisted at distal part ; *c2* also strongly curved as ring. Setae *la*, *lm*, *lp* smooth, slightly curved and the length of them $la > lm > lp$. Setae *h* and *ps* series smooth and short.

Ventral. Tubercle *Sa* long, elongate, directed laterad, blunt at tip and covered with microtubercles. Tubercle *Sp* large, short, shaped at tip, directed anteriorly and covered with microtubercles. Discidium *dis* large and microtuberculate. Epimeral setation ; 3-2-3-4. Anogenital chaetotaxy ; 6-1-2-3. All ventral setae smooth. Legs monodactylous.

Remark. The genus *Acanthobelba* was erected by Enami and Aoki in 1993 from Japan as the type species, *A. tortuosa*. The present new species is described as the second member of the genus. By the original description, the characters of the type species are ; 1) sensillus is smooth and lanceolate, 2) tubercle *Da* is absent, 3) spinae adnate *sa* is strongly curved medially as fish hook, 4) notogastral seta *c1* is thin, whip-like and spiral, 5) seta *c2* is smooth and attenuate, 6) setae *lp* and *h* series are short, thick, and peculiar in form with small spines on the third distal expanded portion.

적 요

지리산에서 채집된 날개옹애중에서 1신종이 발견되어 기재하였다. 신종은 이 속의 모식종인 *Acanthobelba tortuosa* Enami and Aoki, 1993에 비교하여 다음과 같은 특징이 있다. 신종인 곧은 낚시바늘염주옹애(*A. heterosetosa* sp. nov.)는 감각털이 길고 끝부분이 약간 굽어지며 가는 털이 드물게 나있다. 가슴등판돌기인 *Da*가 1쌍 있다. 배등판의 앞돌기 *sa*가 낚시모양이 아니고 곧다. 등판센털은 모양과 길이가 같지 않다. 특히 *c1* 과 *c2* 는 굽고 길며 끝이 뾰족하지 않으며 가는털로 덮여있고 여러차례 굽이쳐 휘어지는 모양이다. 나머지 센털은 매끈하고 길이가 다르다.

검색어 : 분류, 옹애목, 날개옹애

Literature

- Balogh, J. and P. Balogh. 1992. The Oribatid Mites Genera of the World I, Hungarian Natl. History Mus., Budapest, pp. 263
- Enami, Y. and J. Aoki. 1993. A new genus and species of oribatid mite from Japan(Acari, Damaeidae), J. Acarol. Soc. Jpn., 2(1) : 15-18
- Fujikawa, T., M. Fujita and J. Aoki. 1993. Checklist of Oribatid Mites of Japan(Acari : Oribatida), J. Acarol. Soc. Jpn., Vol. 2, Suppl. 1 : 1-121
- (1997년 4월 28일 접수)