

Notes on four Anthribid Beetles (Coleoptera, Anthribidae) from Korean Peninsula

한국산 소바구미과 (딱정벌레목)의 4미기록종

Sang Wook PARK and Kun Suk WOO

박상욱 · 우건석

ABSTRACT Eighteen species in 15 genera of anthribids have been reported from Korea. Four species of anthribids, *Enedreytes gotoi* Shibata, *Sympaector rugirostris* (Sharp), *Litocerus securus* (Boheman), and *Rhaphitropis truncatooides* Morimoto are added to the list for the first time in Korea. Thus Korean anthribids fauna have 22 species in 19 genera.

KEY WORDS Anthribidae, Curculionidea, Coleoptera, Korea, Taxonomy

초 록 소바구미과 (Anthribidae)는 현재까지 15속 18종이 우리 나라에 기록되어 있다. 조사 결과 *Enedreytes gotoi* Shibata, *Sympaector rugirostris* (Sharp), *Litocerus securus* (Boheman)와 *Rhaphitropis truncatooides* Morimoto는 미기록종이다. 이로서 우리 나라의 소바구미과는 총 19속 22종이 된다.

검색어 소바구미과, 바구미상과, 딱정벌레목, 한국, 분류

INTRODUCTION

The family Anthribidae belongs to Coleoptera. Almost 3000 species have been known in world fauna. Anthribidae are also known as Anthotribidae, Choragidae, Platyrhinidae, Platystomatidae, or Platystomidae. Since 1820, the family name Anthribidae has been used consistently. First record on Anthribidae from Korea was made by Mochizuki, M. in 1937. All specimens reported herein are deposited in Seoul National University Museum and National Institute of Agricultural Sciences and Technology Museum. We described four unrecorded species of Anthribidae.

SYSTEMATICS

Subfamily Anthribinae

소바구미亞科

Tribe Allandrini 흰무늬소바구미족 (新稱)

Allandrini Pierce, 1930, Proc. U.S. Nat. Mus., 77: 18

Genus *Enedreytes* Schoenherr

Enedreytes Schoenherr, 1839, Gen. Curc., 5: 215.

Enedreutes Lacordaire, 1866, Gen. Col., 7: 536.

Enedreytes gotoi Shibata 흰원무늬소바구미 (新稱) (Fig. 1)

Enedreytes gotoi Shibata, 1969, Ent. Rev. Japan, 22 : 28.

Description : Body black, legs and antenna black brown. Eyes almost round. Interocular width slightly narrower than rostrum. Antennal club clear, 9th segment with reverse triangular shape, 10th segment wider than long, and 11th segment almost round. Each segment of funi-

cle with almost same in length. 1st segment of tarsi much longer than 2nd and 3rd together. 2nd tarsi with two clear spines. Transverse carina of pronotum located in sub-basal area, lateral carina almost absent. Pronotum punctuated, with a white circular band, a vertical white band at middle and white patch on the dorso-lateral part. On elytra irregular white pubescence patch. Each ventrite almost same length but 4th ventrite clearly shorter than other four ventrites. Pygidium slightly longer than wide.

Body length : 2.5 mm except head.

Material examined : 1 ♀, Suwon, Gyeonggi Prov., 11. VIII. 1982 (K.S. Woo); 1 ♀, Suwon, Gyeonggi Prov., 4. VII. 1983 (K.S. Woo).

Distribution : Korea, Japan

Tribe Mycteini 딱부리소바구미族 (新稱)

Mycteini Morimoto, 1972, Bull. Gov. Forest Exp. Sta., 246: 41

Genus *Sympaector* Kirsch

Sympaector Kirsch, 1875, Mitth. Mus. Dresd, 1: 53.

Sympaector rugirostris (Sharp) 딱부리소바구미 (新稱) (Fig. 2)

Tropideres rugirostris Sharp, 1891, Trans. Ent. Soc. Lond., : 302.

Sympaector rugirostris Shibata, 1978, Ent. Rev. Japan, 31 : 93.

Description : Body black with yellowish brown pubescence. Rostrum almost same in length with foretibia. A dorsal carina on the rostrum. Yellowish brown pubescence on vertex. Eyes oval, convergent on frons. The eyes surrounded with yellow band, open on upper side. Antenna reach to the middle of elytra. Antennal funicle and club very slender. Transverse carinae located in sub-basal area, lateral carina reach to middle of side and somewhat slanted. Three yellow patches between transverse carina and basal margin. Pleural suture invisible. Elytra with yellow and dark brown pubescence in a variegated pattern. Mesosternal process wide, subtruncated. Legs brown; each femora, tibiae and tarsi with a broad yellow band. Prosternum and mesosternum

roughly punctuated. Ventrites with brown pubescence except middle black part. Pubescence between each coxapodite yellow. Pygidium longer than wide.

Body length : 5.6 mm except head

Material examined : 1 ♂, Gwangleung, Gyeonggi Prov., 1. V. 1993 (S.W. Park).

Distribution : Korea, Japan, Russian Far East.

Tribe Acorynini 떡소바구미族

Acorynides Lacordaire, 1866, Gen. Col., 7: 512.

Acorynini Morimoto, 1972, Bull. Gov. Forest Exp. Sta., 246: 37.

Tropiderini LeConte, 1875, Proc. Amer. Phil. Soc., 15: 392.

Eurymycterini Pierce, 1930, Proc. U. S. Nat. Mus., 77, Art. 17: 15.

Genus *Litocerus* Schoenherr

Litocerus Schoenherr, 1833, Gen. Sp. Curc., 1: 125.

Litocerus securus (Boheman) 붉은무늬떡소바구미 (新稱) (Fig. 3)

Tropideres securus Boheman, 1839, Schön. Gen. Curc. 5: 207

Litocerus rufescens Roelofs, 1879, Ann. Soc. Ent. Belg., 22: 51.

Tropideres rufescens Sharp, 1891, Trans. Ent. Soc. London, : 307.

Litocerus anna Jordan, 1903, Novit. Zool., 10: 424.

Description : Body black. Base of the legs and antennae reddish brown. Rostrum longer than wide and 6 times as wide as interocular width. Eye almost oval. Rostrum and ventral surface of whole body covered with ivory-white pubescence. Especially dense pubescence under the eye. Transverse carina located in sub-basal area and the basal angle (a part between transverse carina and lateral carina) gently curved and slanted to downward. Lateral carina reach to the pleural suture. Pleural suture visible. Some part of elytra have reddish brown part covered with yellow pubescence.

Pyriform reddish brown patch in 3rd interval along the scutellary striole; triangular patch between 5th interval; some irregular patches on apex. Tibia with two

white pubescence bands on the reddish brown color band. The middle of 5th ventrite 2 times as long as that of 4th ventrite. Pygidium almost same length and width in male but 1.2 times as wide as long in female.

Body length : 3.7 mm except head.

Material examined : 1 ♂, Goesan, Chungbug Prov., 23. V. 1993 (S.W. Park); 1 ♀, Paju, Gyeonggi Prov., 1. V. 1997 (H. K. Shin).

Distribution : Korea, Japan, Taiwan, China, Thailand, India, Borneo, Java, Russian Far East..

Tribe Zygaenodini 소바구미족

Zygaenodides Lacordaire, 1866, Gen. Col., 7: 542.

Zygaenodini Morimoto, 1972, Bull. Gov. Forest Exp. Sta., 246: 43

Genus *Rhaphitropis* Reitter

Tropideres subgenus *Rhaphitropis* Reitter, 1916, Faun. Germ., 5: 5.

Rhaphitropis Jordan, 1925, Ann. Mag. Nat. Hist., (9)16: 257.

Rhaphitropis truncatoides Morimoto 애기소바구미 (新稱) (Fig. 4)

Rhaphitropis truncatoides Morimoto, 1981, Esakia, 17: 72.

Description : Body blackish brown, tibiae, tarsi and antennae reddish brown. Rostrum short and wide, mandible almost triangular and slightly bent at the apex. Rostrum three times as wide as interocular width. Antennal proportions in length from base as 8 : 9 : 9 : 7 : 6 : 4 : 5.5 : 4 : 6 : 4 : 7. Transverse carina of pronotum located in sub-basal area and clearly bisinuate. Basal angle acute and lateral carina horizontal and reach to pleural suture. Pleural suture visible. Pronotum and

elytra vague pubescence patch. Elytra parallelly sided and 1.3 times as long as wide. Each ventrites almost same in length. Pygidium much longer than wide.

Body length : 2.1 mm except head.

Material examined : 1 ♂, Haman, Gyeongnam Prov., 20. VI. 1993 (D.S. Ku)

Distribution : Korea, Japan, Russian Far East.

Note : Most of species in this genus are very similar to each other, so antennal proportion in length to be used for identification.

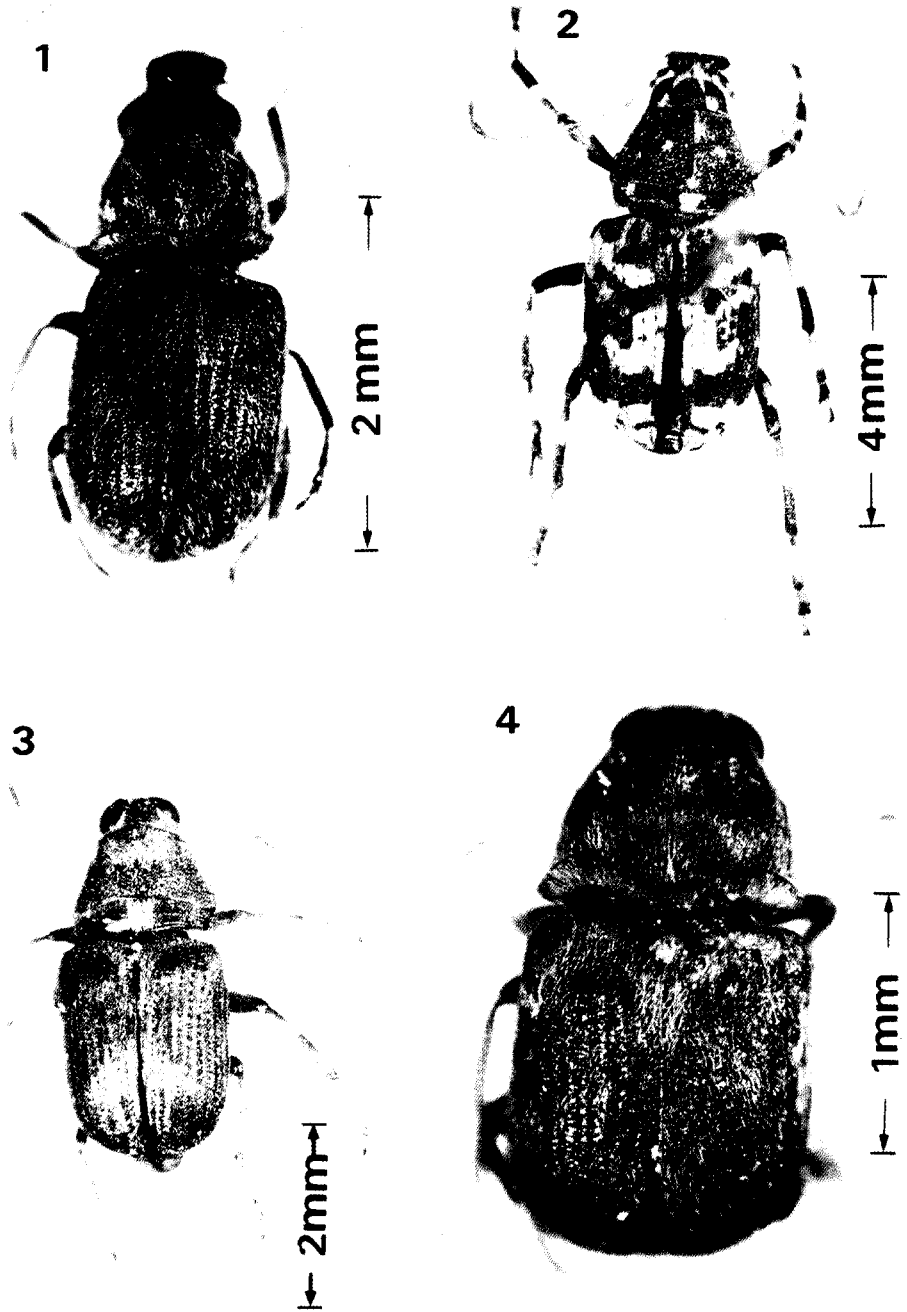
ACKNOWLEDGEMENTS

We would like to express our thanks to Dr. S.B. Ahn, Dr. Andrei B. Egorov, K.J. Hong, D.S. Ku, H.S. Lee and J.W. Kim for their help. Also, authors wish to express special thanks to Dr. Katsura Morimoto and Dr. Toshio Senoh who sent many literature.

REFERENCES

- Morimoto, K. 1972.** A Key to the Genera of Oriental Anthribidae (Coleoptera), Bull. Gov. For. Exp. Sta. No 246: 35-54.
- Morimoto, K. 1980.** The family Anthribidae of Japan (Coleoptera). Part 3. Esakia, 15: 11-47.
- Morimoto, K. 1981.** The family Anthribidae of Japan (Coleoptera). Part 4. Esakia, 17: 53-107 (in Japanese).
- The Entomological Society of Korea & Korean Society of Applied Entomology. 1994.** Check List of Insects from Korea. Kon-Kuk Univ. Press pp.199-200.
- Wolfrum, P. 1929.** Anthribidae. In Junk, W. & S. Schenkling (eds.), *Coleopterorum Catalogues*, pars 102: 3-145. W. Junk, Berlin.

(Received April 7, 1997, Accepted September 11, 1997)



Figs. 1-4. Adult.

1 : *Enedreytes gotoi* Shibata (♀), 2 : *Sympaector rugirostris* (Sharp) (♂), 3 : *Litocerus securus* (Boheman) (♂), 4 : *Rhaphitropis truncatoides* Morimoto (♂).