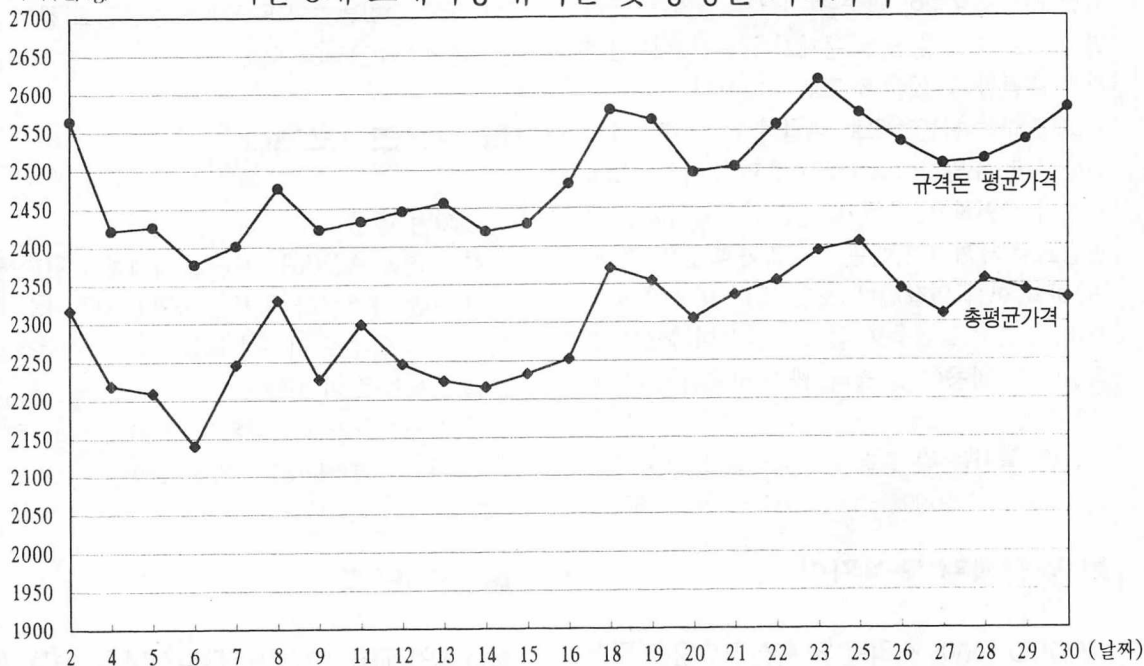


서울·지방 축산물 도매시장

가격(원/kg)

서울 3개 도매시장 규격돈 및 총평균 지육가격



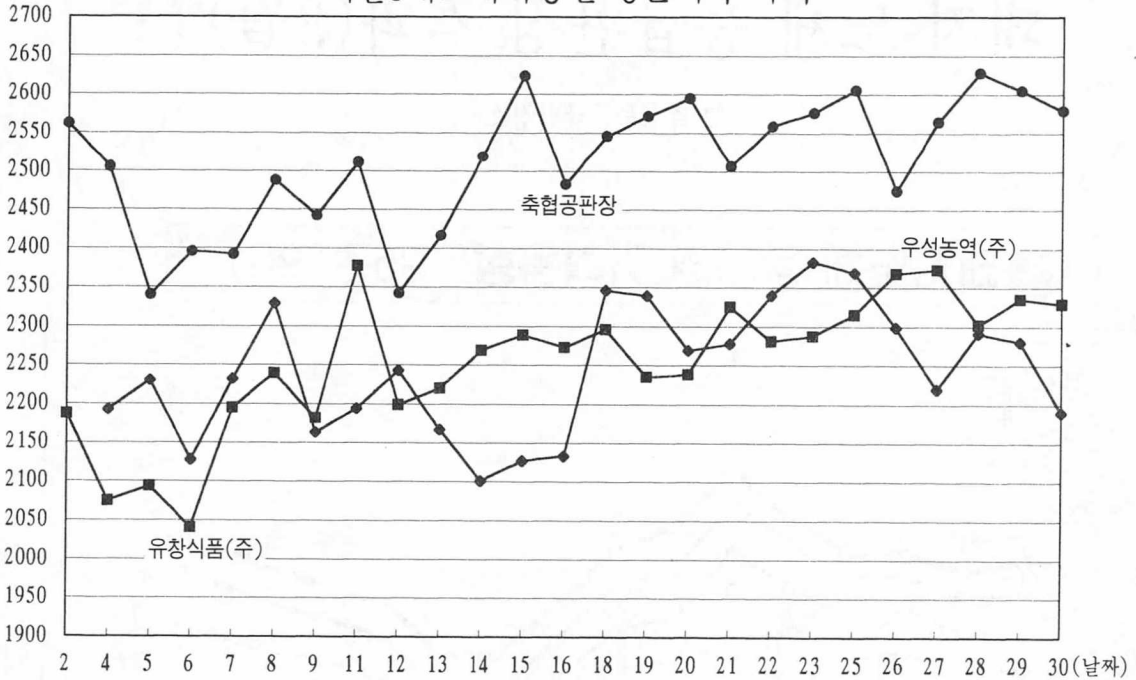
서울		일자	3/1	2	3	4	5	6	7	8	9	10	11	12	13	14	15
축공판장	경매두수					2,900	2,806	2,785	2,556	2,833	2,065		3,050	3,140	2,955	3,091	2,858
	평균가격					2,193	2,230	2,128	2,232	2,329	2,163		2,194	2,243	2,167	2,101	2,127
우성농역(주)	경매두수	휴	1,374	일	1,551	1,641	1,605	1,347	1,402	972	일	1,423	1,482	1,340	1,538	1,404	
	평균가격		2,187		2,075	2,094	2,041	2,195	2,239	2,182		2,377	2,199	2,220	2,269	2,289	
유창식품	경매두수	무	725	요	1,053	1,043	773	709	814	810	요	949	797	901	912	579	
	평균가격		2,562		2,505	2,340	2,396	2,392	2,488	2,442		2,511	2,342	2,417	2,519	2,624	
총평균	경매두수		2,099	일	5,504	5,490	5,163	4,612	5,049	3,847	일	5,422	5,419	5,196	5,541	4,841	
	평균가격		2,317		2,219	2,210	2,141	2,246	2,330	2,227		2,298	2,246	2,224	2,216	2,233	
규격돈계(평균)	경매두수		1,906		5,025	5,009	4,647	4,302	4,745	3,516		4,987	4,939	4,687	5,064	4,442	
	평균가격		2,564		2,422	2,427	2,378	2,402	2,477	2,423		2,433	2,446	2,457	2,420	2,430	

지방		일자	3/1	2	3	4	5	6	7	8	9	10	11	12	13	14	15
인천대신산업	경매두수		607		645	702	640	808	754	724		616	658	752	739	796	
	평균가격		2,437	일	2,476	2,675	2,661	2,496	2,351	2,447	일	2,489	2,466	2,533	2,537	2,509	
대구신흥사업	경매두수	휴	1,122		1,061	1,012	877	835	960	774		988	1,009	907	879	925	
	평균가격		2,229	요	2,161	2,059	2,131	2,177	2,086	2,286	요	2,250	2,162	2,015	2,316	2,388	
부산2개도매시장	경매두수	무	1,653	휴	2,316	1,819	1,974	2,020	2,186			2,204	2,005	2,156	1,944	1,908	
	평균가격		2,369	일	2,296	2,231	2,109	2,267	2,150	일		2,234	2,260	2,237	2,210	2,223	
광주삼호축산	경매두수		733		488	369	510	472	344	439		473	410	410	483	505	
	평균가격		2,326		2,289	2,366	2,280	2,202	2,315	2,518		2,330	2,510	2,496	2,313	2,474	

돼지 지육시황(3월)

서울3개도매시장별 평균지육 가격

가격(원/kg)



16	17	18	19	20	21	22	23	24	25	26	27	28	29	30	31	계
1,710		2,450	3,084	2,896	2,920	2,762	1,760		2,947	3,238	3,230	2,865	2,742	1,412		65,055
2,133		2,346	2,339	2,269	2,278	2,340	2,383		2,369	2,299	2,219	2,291	2,280	2,190		2,243
1,159	일	1,326	1,445	1,553	1,432	1,545	1,056	일	1,463	1,426	1,374	1,406	1,457	1,152	일	34,873
2,273		2,296	2,235	2,238	2,325	2,281	2,288		2,315	2,368	2,373	2,302	2,335	2,329		2,253
791	요	937	1,022	712	1,075	762	710	요	1,201	853	837	976	680	826	요	21,447
2,483		2,546	2,572	2,595	2,506	2,559	2,577		2,606	2,475	2,565	2,628	2,605	2,579		2,513
3,660	일	4,713	5,551	5,161	5,427	5,069	3,526	일	5,611	5,517	5,441	5,247	4,879	3,390	일	121,375
2,253		2,372	2,355	2,305	2,336	2,355	2,394		2,406	2,344	2,311	2,357	2,342	2,332		2,295
3,323		4,341	5,108	4,760	5,068	4,712	3,223		5,232	5,081	5,009	4,915	4,486	3,059		
2,482		2,578	2,565	2,496	2,503	2,558	2,617		2,573	2,535	2,507	2,513	2,538	2,580		

16	17	18	19	20	21	22	23	24	25	26	27	28	29	30	31	계
640	일	679	558	816	777	837	595	일	650	776	840	818	637	598	일	17,662
2,500		2,554	2,478	2,593	2,502	2,447	2,467		2,542	2,561	2,430	2,3547	2,629	2,550		2,507
882	요	1,000	960	940	895	971	851	요	986	953	956	980	953	820	요	23,496
2,245		2,277	2,214	2,226	2,240	2,267	2,314		2,243	2,308	2,365	2,281	2,231	2,166		2,225
1,934	일	1,774	2,044	2,020	2,081	2,282	1,706	일	2,452	1,848	2,258	2,429	2,280	1,973	일	49,266
2,088		2,258	2,330	2,222	2,353	2,274	2,166		2,282	2,283	2,240	2,147	2,150	2,128		2,229
517		449	372	426	414	405	572		504	382	435	469	496	443		11,460
2,356		2,576	2,635	2,465	2,572	2,537	2,466		2,471	2,594	2,519	2,354	2,339	2,496		2,432