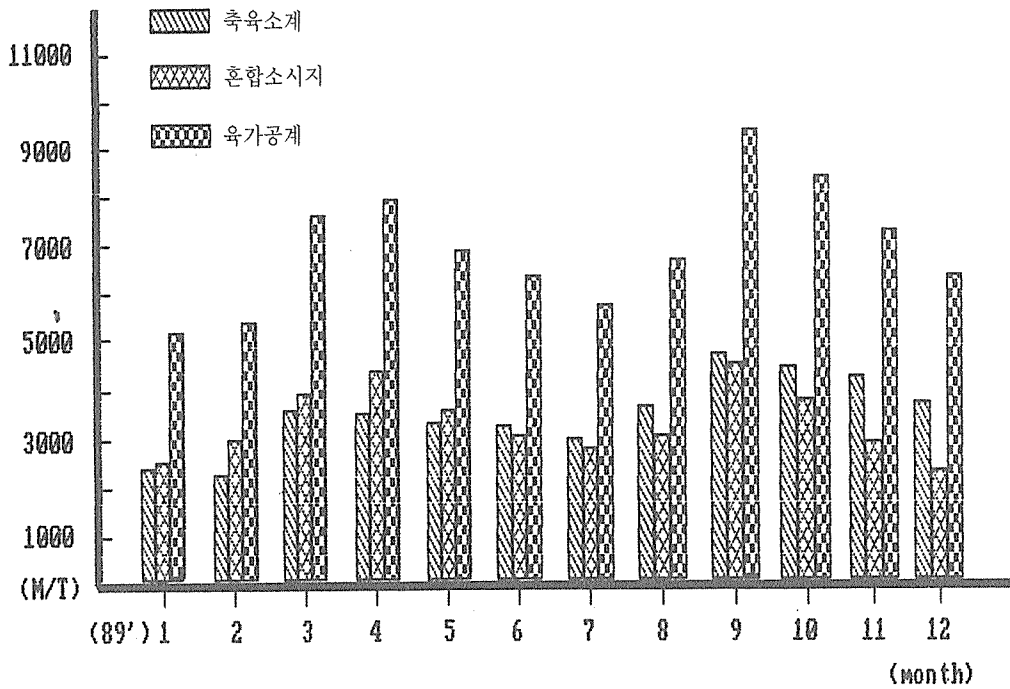
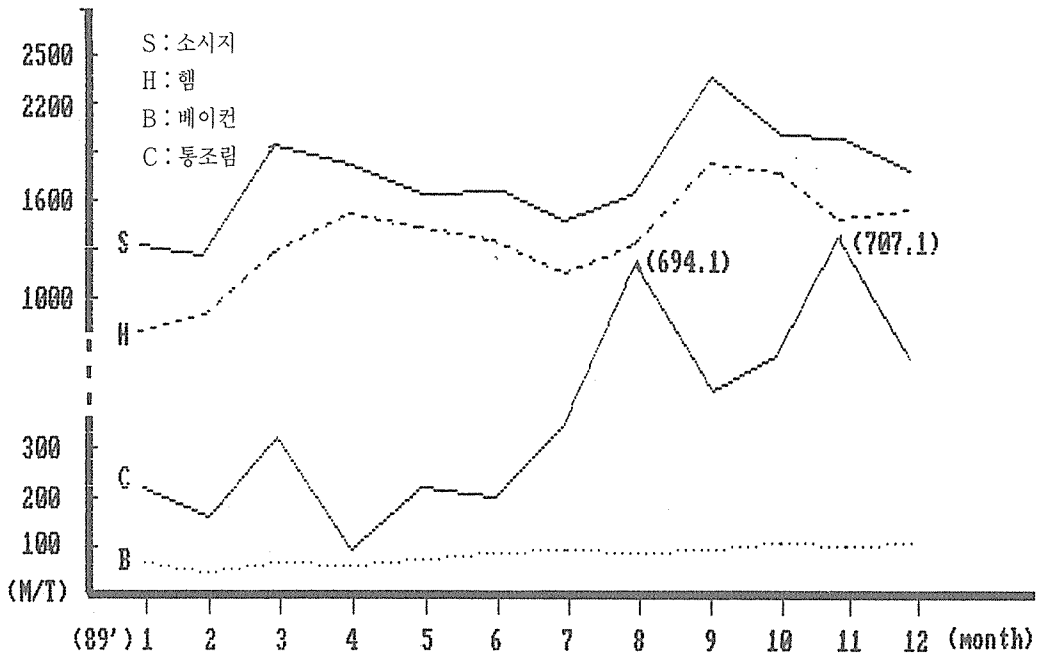


## ○ '89 육가공품 월별 생산량 현황

(단위 : 톤)

월별 품목별	1	2	3	4	5	6	전반기계
베이컨	44.6	31.9	37.7	33.8	39.0	43.3	230.3
햄	902.5	974.6	1,298.3	1,515.6	1,419.4	1,338.0	7,448.4
소시지	1,344.3	1,298.6	1,920.6	1,794.5	1,640.6	1,680.5	9,679.1
캔	224.4	155.7	322.1	65.2	217.9	200.8	1,186.1
축육소계	2,515.8	2,460.8	3,578.7	3,409.1	3,316.9	3,262.6	18,543.9
혼합소지	2,648.5	3,003.1	3,961.8	4,291.2	3,597.3	3,011.6	20,513.5
육가공품 총 계	5,164.3	5,463.9	7,540.5	7,700.3	6,914.2	6,274.2	39,057.4

월별 품목별	7	8	9	10	11	12	후반기계	총계
베이컨	46.4	43.9	46.9	53.2	47.2	53.8	291.4	521.7
햄	1,165.6	1,322.1	1,873.6	1,780.6	1,374.6	1,409.7	8,926.2	16,374.6
소시지	1,490.6	1,633.8	2,378.1	2,090.3	2,042.3	1,818.8	11,453.9	21,133.0
캔	331.0	694.1	411.8	480.3	707.1	486.7	3,113.7	4,299.8
축육소계	32,033.6	3,693.9	4,710.4	4,407.1	4,171.2	3,769.0	23,785.2	42,329.1
혼합소지	2,792.8	3,045.7	4,490.5	3,852.7	2,946.5	2,408.5	19,536.7	40,050.2
육가공품 총 계	5,826.4	6,739.6	9,200.9	8,259.8	7,117.7	6,177.5	43,321.9	82,379.3



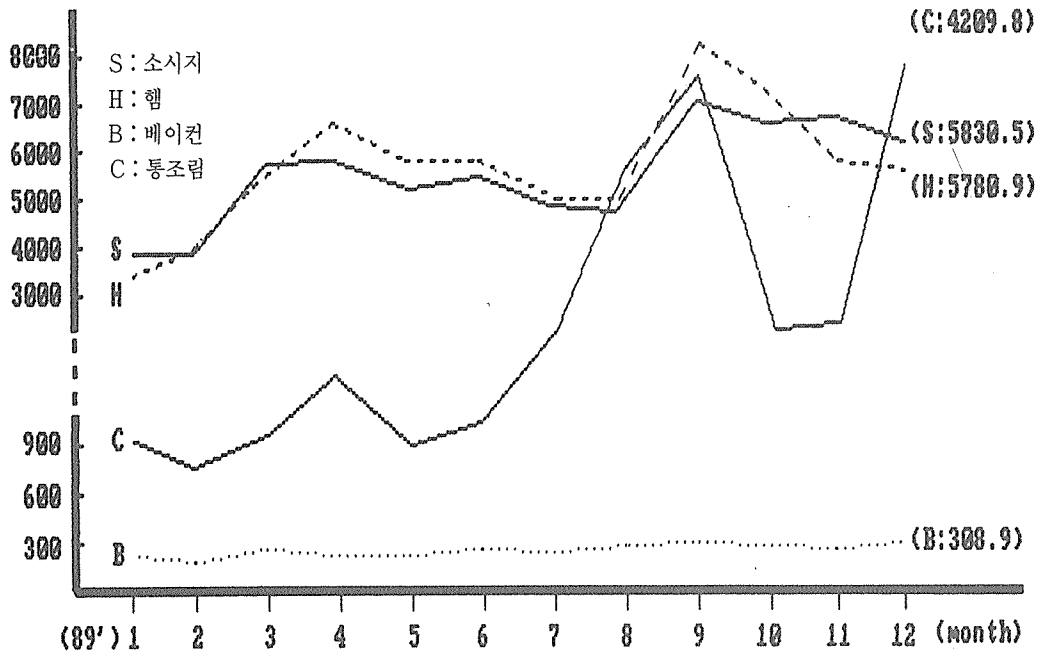
## ○ '89 육가공품 월별 매출액 현황

(단위 : 백만원)

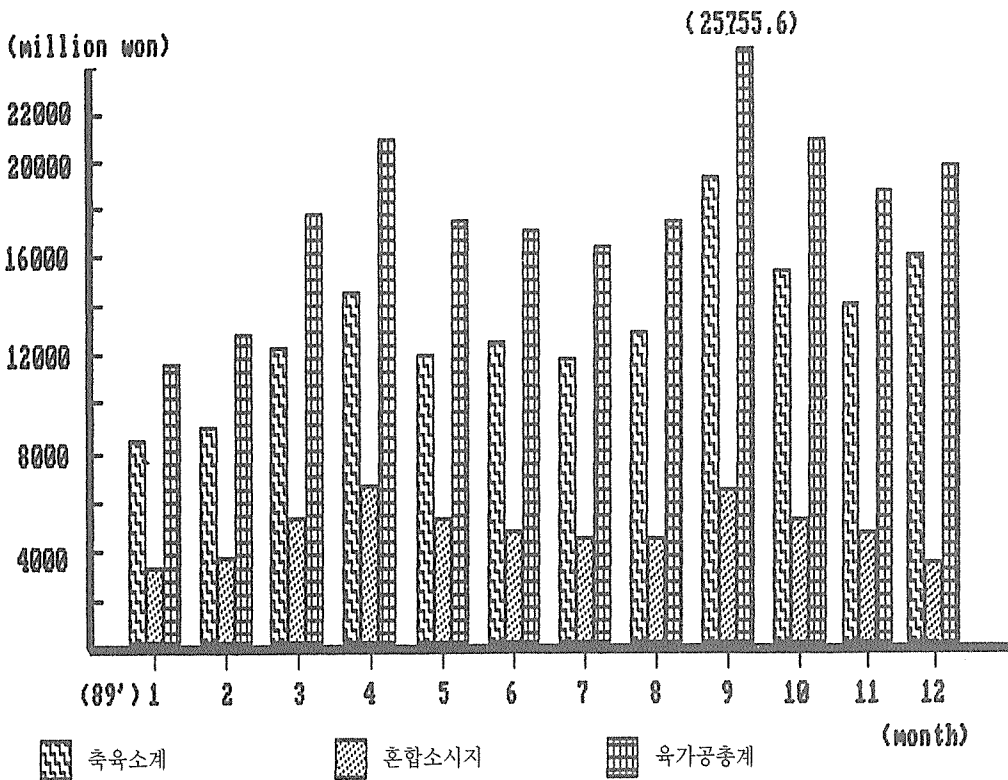
품목별 / 월별	1	2	3	4	5	6	전반기계
베이컨	211.6	192.0	229.5	210.1	214.4	247.0	1,304.6
햄	3,413.1	4,030.5	5,369.9	6,649.0	5,745.9	5,735.7	30,944.1
소시지	3,828.8	4,100.4	5,747.6	5,969.0	5,247.0	5,428.1	30,320.9
캔	915.6	728.1	929.9	1,469.5	843.5	1,033.4	5,920.0
축육소계	8,369.1	9,051.0	12,276.9	14,297.6	12,050.8	12,444.2	68,489.6
혼합소시지	3,445.4	3,817.9	5,414.8	6,677.7	5,371.9	4,686.0	29,413.7
육가공품총 계	11,814.5	12,868.9	17,691.7	20,975.3	17,422.7	17,130.2	97,903.3

품목별 / 월별	7	8	9	10	11	12	후반기계	총계
베이컨	245.3	263.9	286.9	278.9	261.4	308.9	1,654.3	2,949.9
햄	5,982.2	4,947.3	8,151.6	7,215.2	5,917.7	5,780.9	37,094.9	68,039.0
소시지	4,951.3	4,867.6	7,046.2	6,617.1	6,351.5	5,830.5	35,664.2	65,985.1
캔	1,663.7	2,908.6	3,866.5	1,505.6	1,525.8	4,209.8	15,679.9	21,599.9
축육소계	11,942.5	12,987.4	19,351.2	15,616.7	14,056.4	16,130.1	90,084.3	158,573.9
혼합소시지	4,293.2	4,390.6	6,404.4	5,382.6	4,664.0	3,696.4	28,831.2	58,244.9
육가공품총 계	16,235.7	17,387.0	25,755.6	20,999.3	18,720.4	19,826.5	118,915.5	216,818.8

(million won)



(million won)



# 연도별 육류 도매가격 동향

(단위 : 원/지육kg)

년 도	우		육		돈		계		육 지 수
	가 격	지 수	가 격	지 수	가 격	지 수	가 격	지 수	
1978	2,729	62.2	1,459	62.3	768	48.6			
1979	2,818	64.3	1,076	46.0	599	37.9			
1980	3,577	81.6	1,576	67.3	901	57.1			
1981	4,834	110.3	2,559	109.3	1,010	64.0			
1982	5,437	124	2,527	107.9	1,084	68.7			
1983	5,927	135.2	2,198	93.9	1,019	64.5			
1984	5,723	130.5	1,894	80.9	1,487	94.2			
1985	4,384	100	2,341	100	1,579	100			
1986	3,875	88.4	2,436	104.1	1,480	93.7			
1987	3,094	89.1	1,880	80.3	1,438	91.1			
1988	5,500	125.5	1,894	80.9	1,700	107.7			
1989	6,243	142.4	1,648	70.4	1,759	111.4			

### 연도별 육가공품 생산 실적

(단위:톤)

연도	돈 육 품						우육 제품	체육 제품	오리 고기	합계
	돈		육		품					
	햄류	소시지류	베이컨	통조림	기타	소계				
'65	111	374	37	42	-	564	-	-	-	
'70	129	1,336	2	429	-	1,896	-	-	-	
'75	293	3,598	47	18	-	3,956	-	-	-	
'80	728	1,895	80	3,076	-	5,779	-	-	-	
'81	1,101	3,083	155	248	-	4,587	-	-	-	
'82	1,480	2,335	183	885	-	4,883	-	-	-	
'83	2,449	2,620	505	1,541	-	7,165	-	-	-	
'84	2,661	3,295	307	2,567	-	8,830	-	-	-	
'85	4,369	5,385	280	2,661	-	12,695	982	30	13,707	
'86	4,849	5,904	338	2,678	-	13,759	840	800	17,195	
'87	7,203	7,748	417	3,301	-	18,669	512	1,743	20,956	
'88(A)	11,977	12,913	516	4,171	-	29,577	927	2,155	32,659	
'89(B)	16,435	20,499	530	3,989	129	41,582	697	-	42,279	
B/A(%)	137.2	158.7	102.7	95.6	-	140.6	75.2	-	129.5	

\* 계육제품은 대부분 돈육소시지와 혼합된 소시지 제품인 바, '89년부터는 이의분리가 어려워 돈육제품에 포함시킴.

主要畜產物 需給狀況 Demand and Supply of Major Livestock Products

單位：'w/1

區分	年	供				需				要				Class	Items		
		前年移越		Beginning Stocks		消費		Consumption		次年移越		Ending Stocks					
		國內產	總計	國內產	總計	國內產	總計	國內產	總計	國內產	總計	國內產	總計				
Domestic Production	Grand Total	Domestic Production	Grand Total	Domestic Production	Grand Total	Domestic Production	Grand Total	Domestic Production	Grand Total	Domestic Production	Grand Total						
肉 類 畜 產 物	83	—	979	979	532,043	—	480,872	50,192	532,043	49,408	530,280	—	827	827	531,107	All Meat	
	84	—	827	827	549,645	283	547,443	23,995	571,467	16,549	563,992	1,919	8,273	10,192	574,467		
	85	1,919	8,273	10,192	588,403	—	598,595	—	598,595	4,682	592,862	1,970	3,591	5,561	598,595		
	86	1,970	3,591	5,561	601,346	808	594,120	6,561	597,711	3,591	597,711	8,388	—	8,388	606,907		
	87	8,388	—	8,388	665,561	—	674,949	3,142	665,246	9,275	665,246	6,561	—	6,561	674,949		
	88	6,561	—	6,561	708,072	14,193	728,826	7,936	706,697	9,275	715,972	—	4,918	4,918	728,826		
	89	—	4,855	4,855	730,074	49,592	784,521	11,851	716,712	53,261	769,973	1,511	1,188	2,699	784,521		
	83	—	979	979	66,089	50,192	117,280	—	66,089	49,408	115,497	—	827	827	116,324		Beef
	84	—	827	827	90,803	23,995	115,625	—	90,803	16,549	106,581	771	8,273	9,044	115,625		
85	771	8,273	9,044	116,859	—	125,903	—	116,859	4,682	120,342	1,970	3,591	5,561	125,903			
86	1,970	3,591	5,561	150,761	—	156,322	—	144,343	3,591	147,934	8,388	—	8,388	156,322			
87	8,388	—	8,388	149,217	—	157,605	—	151,926	—	151,926	5,679	—	5,679	157,605			
88	5,679	—	5,679	126,582	14,193	146,454	—	132,261	9,275	141,536	—	4,918	4,918	146,454			
89	—	4,855	4,855	90,051	49,592	144,498	—	90,051	53,261	143,312	—	1,188	1,188	144,498			
83	—	—	—	294,912	—	340,934	—	294,912	—	339,503	1,148	—	1,148	340,934	Pork		
84	—	—	—	340,934	—	346,446	—	346,446	—	346,274	—	—	—	346,446			
85	1,148	—	1,148	345,298	—	321,197	—	321,197	—	320,389	—	—	—	321,197			
86	—	—	—	321,197	—	376,654	—	376,654	—	372,630	882	—	882	376,654			
87	—	—	—	376,654	—	433,380	—	425,444	—	425,444	—	—	—	433,380			
88	882	—	882	432,498	—	485,094	—	471,732	—	471,732	1,511	—	1,511	485,094			
89	—	—	—	485,094	—	119,871	—	119,871	—	119,871	—	—	—	119,871			
83	—	—	—	117,908	—	126,246	—	117,908	—	126,246	—	—	—	117,908		Chicken Meat	
84	—	—	—	126,246	—	129,388	—	126,246	—	129,388	—	—	—	126,246			
85	—	—	—	129,388	—	140,690	—	140,690	—	140,690	—	—	—	140,690			
86	—	—	—	140,690	—	148,992	—	148,992	—	148,992	—	—	—	148,992			
87	—	—	—	148,992	—	154,929	—	154,929	—	154,929	—	—	—	154,929			
88	—	—	—	154,929	—	728,575	—	728,575	—	728,575	8,486	—	8,486	737,061			
89	—	—	—	728,575	—	811,061	—	811,061	—	811,061	39,375	—	39,375	850,436			
83	12,133	2,522	14,655	712,206	10,200	737,061	—	712,206	12,278	728,575	8,042	444	8,486	737,061	Milk		
84	8,042	444	8,486	840,543	23,850	872,879	—	811,061	22,443	833,504	37,524	1,851	39,375	872,879			
85	37,524	1,851	39,375	1,005,811	1,914	1,047,100	18,270	988,514	3,765	992,279	56,551	—	56,551	1,047,100			
86	56,551	—	56,551	1,154,460	—	1,211,011	—	1,162,400	—	1,162,400	48,611	—	48,611	1,211,011			
87	62,046	—	62,046	1,413,126	—	1,475,172	—	1,424,765	—	1,424,765	50,407	—	50,407	1,475,172			
88	50,407	—	50,407	1,631,896	—	1,682,303	—	1,652,255	—	1,652,255	30,048	—	30,048	1,682,303			
89	30,048	—	30,048	1,761,796	—	1,791,844	—	1,641,548	—	1,641,548	150,296	—	150,296	1,791,844			
83	—	—	—	4,936	—	4,936	—	4,936	—	4,936	—	—	—	4,936		Eggs (Million)	
84	—	—	—	4,939	—	4,939	—	4,939	—	4,939	—	—	—	4,939			
85	—	—	—	5,390	—	5,390	—	5,390	—	5,390	—	—	—	5,390			
86	—	—	—	6,029	—	6,029	—	6,029	—	6,029	—	—	—	6,029			
87	—	—	—	6,573	—	6,573	—	6,573	—	6,573	—	—	—	6,573			
88	—	—	—	7,220	—	7,220	—	7,220	—	7,220	—	—	—	7,220			
89	—	—	—	6,919	—	6,919	—	6,919	—	6,919	—	—	—	6,919			

註：1) '89年未確定值。  
2) '87年度半乳牛乳需給統計表未辦法變更之'86年度之前期結算額。是次發生。  
資料：農林水產部 畜產物價値 需給資料

### 主要畜產物 年度別 消費量 Consumption of Major Livestock Products by Year

單位：總量：kg  
1人當量：g  
Unit: Total: kg  
Per Capita: g

年	肉類總量		牛		豚		肉		雞		鴨		卵		牛乳(原乳)		Class	Year
	All Meat		Beef		Pork		Chicken Meat		Total		Egg		Milk					
	Total	1人當量 Per Capita	Total	1人當量 Per Capita	Total	1人當量 Per Capita	Total	1人當量 Per Capita	Total	1人當量 Per Capita	Total	1人當量 Per Capita	Total	1人當量 Per Capita				
1972	184,725	5,513	40,229	1,201	90,230	2,693	54,266	1,620	153,450	4,620	79,852	2,383						
1973	186,846	5,479	44,919	1,317	90,126	2,643	51,801	1,519	137,527	4,070	104,082	3,052						
1974	200,128	5,769	51,506	1,485	95,353	2,749	53,269	1,535	151,525	4,400	126,901	3,658						
1975	224,734	6,370	70,292	1,992	98,848	2,802	55,594	1,576	159,287	4,565	162,435	4,604						
1976	245,465	6,847	75,533	2,107	109,046	3,042	60,886	1,698	167,707	4,675	198,892	5,548						
1977	295,987	8,129	81,624	2,242	141,311	3,881	73,052	2,006	195,339	5,390	254,245	6,982						
1978	374,904	10,141	114,731	3,103	177,984	4,814	82,189	2,223	205,854	5,555	325,867	8,815						
1979	428,857	11,426	113,827	3,033	225,307	6,003	89,723	2,390	232,725	6,215	374,410	9,975						
1980	432,682	11,349	99,974	2,622	241,842	6,344	90,866	2,383	249,865	6,545	411,809	10,802						
1981	393,679	10,167	93,202	2,407	209,831	5,419	90,646	2,341	243,705	6,270	557,722	14,403						
1982	443,219	11,269	106,506	2,708	237,530	6,039	99,183	2,522	247,775	6,325	592,720	15,070						
1983	530,280	13,273	115,497	2,891	294,912	7,382	119,871	3,003	271,480	6,795	728,575	18,255						
1984	563,992	13,906	106,581	2,627	339,503	8,374	117,908	2,906	271,654	6,695	833,504	22,528						
1985	592,862	14,398	120,342	2,923	346,274	8,410	126,246	3,066	296,476	7,200	972,279	23,827						
1986	597,711	14,379	147,934	3,559	320,389	7,707	129,388	3,113	331,608	7,977	1,162,400	28,225						
1987	665,246	15,804	151,926	3,600	372,630	8,864	140,690	3,340	361,539	8,590	1,424,765	34,270						
1988	715,972	17,048	141,536	3,372	425,444	10,136	148,992	3,540	397,124	9,460	1,652,255	39,370						
1989	769,973	18,168	143,312	3,382	471,732	11,131	154,929	3,656	380,543	8,979	1,641,548	38,734						

註：1) 1989年 數值為 暫定值  
2) 精肉基準  
資料：農林水產部 畜產物統計 及 統計資料



〈한국인 1일 영양권장량, 1989년 제5차개정〉<sup>1)</sup>

구분	연령	체중	신장	에너지	단백질	비타민A	비타민B <sub>1</sub>	비타민B <sub>2</sub>	나이아신	비타민C	비타민D	칼슘	철	분	
	세	kg	cm	kcal	g	R.E. <sup>2)</sup>	mg	mg	mg	mg	μg <sup>3)</sup>	mg	mg	mg	
영아	0~3개월	5.5	58.5	800	25	350	0.40	0.48	6.4	35	10	400	10		
	4~6개월	8.4	67.5	900	25	350	0.45	0.54	7.2	35	10	400	10		
	7~9개월	9.5	76.0	1,000	30	350	0.50	0.60	8.0	35	10	400	15		
	10~12개월	10.4	79.0	1,100	30	350	0.55	0.66	8.0	35	10	400	15		
소아	1~3	12.6	87.0	1,200	35	350	0.60	0.72	8.0	40	10	500	15		
	4~6	19.0	110.0	1,500	40	400	0.75	0.90	10.0	40	10	600	10		
	7~9	26.0	130.0	1,800	50	500	0.90	1.08	12.0	40	10	700	10		
남자	10~12	36.0	144.0	2,100	60	600	1.05	1.26	14.0	50	10	800	15		
	13~15	51.0	161.0	2,600	80	700	1.30	1.56	17.0	50	10	800	18		
	16~19	59.0	169.0	2,500	75	700	1.25	1.50	16.5	55	10	800	18		
	20~29	64.0	170.5	2,500	70	700	1.25	1.50	16.5	55	5	600	10		
	30~49	65.0	168.5	2,500	70	700	1.25	1.50	16.5	55	5	600	10		
	50~64	63.0	168.0	2,200	70	700	1.10	1.32	14.5	55	5	600	10		
	65이상	61.0	167.0	1,900	70	700	1.00	1.20	13.0	55	5	600	10		
	여자	10~12	37.0	145.0	2,000	60	600	1.00	1.20	13.0	50	10	800	18	
		13~15	48.0	155.0	2,300	65	700	1.15	1.38	15.0	50	10	800	18	
		16~19	52.0	158.0	2,200	60	700	1.10	1.32	14.5	55	10	700	18	
20~29		52.5	159.5	2,000	60	700	1.00	1.20	13.0	55	5	600	18		
30~49		55.0	158.0	2,000	60	700	1.00	1.20	13.0	55	5	600	18		
50~64		54.0	156.0	1,900	60	700	1.00	1.20	13.0	55	5	600	10		
임신부	65이상	53.0	156.0	1,600	60	700	1.00	1.20	13.0	55	5	600	10		
	전반기			+150	+30	+	+0.40	+0.30	+2.0	+15	+5	+400	+2		
	후반기			+350	+30	+100	+0.40	+0.30	+2.0	+15	+5	+400	+2		
수유부				+700	+30	+300	+0.60	+0.50	+6.0	+35	+5	+500	+2		

1) 성인은 중등활동에 종사하는 사람을 기준으로 하였다. 본표의 권장량은 주어진 조건에서의 기준치일 뿐이며 각 개인의 실제 필요량은 체중 및 활동 정도에 따라 본문의 내용을 참고하여 결정하기 바란다.

2) R.E.: Retinol Equivalent, 1 R.E. = 1 μg β - Carotene

3) 비타민 D: 10 μg = 400 I.U.

4) 임신기와 수유기 동안에 식이를 통한 철분 섭취가 충분하지 못할 경우 철분 영양제에 의한 보충을 권장한다.

★ 자료 : 한국 식량 영양정책

\*연도, 월별 CAN 수입 실적

(단위: 톤, 천불)

구분	86 년도		87 년도		88 년도		89 년도	
	물량	금액	물량	%	물량	%	물량	%
1월	15	39	8	-43	42	394	263	534
2월	16	33	0	-97	22	5193	166	654
3월	24	39	29	20	153	424	233	53
4월	8	14	55	573	86	56	267	211
5월	30	50	12	-61	103	774	132	27
6월	11	19	68	521	94	38	224	139
상반기	104	193	172	65	499	190	1286	157
7월	34	54	15	-55	216	1317	203	-6
8월	0	1	82	75185	110	34	269	145
9월	67	137	56	-16	217	286	229	6
10월	15	30	35	131	126	258	147	17
11월	21	30	125	501	101	44	372	106
12월	115	124	79	-31	311	292	453	46
하반기	251	384	393	56	1161	195	1,673	46
년 계	356	577	566	59	1660	193	2,959	44

# 日本の 육가공품 생산량

(단위 : 톤)

연월별	햄								프레스햄	췌프트햄
	로인햄	본레스햄	본인햄	락스햄	벨리햄	슬더햄	기타	소계		
1986년	74,350	23,446	209	363	71	3,400	7,942	109,780	21,086	48,507
1987	81,693	23,731	206	453	126	3,123	9,270	118,603	17,859	45,997
1988	85,015	21,735	218	579	155	2,753	10,976	121,430	15,305	43,507
전년대비	104.1	91.6	106.0	127.6	122.9	88.1	118.4	102.4	85.7	94.6
1989년 8월	7,548.2	1,532.7	16.2	57.7	7.3	136.8	954.8	10,253.7	1,190.1	4,271.0
9	6,757.4	1,496.5	11.0	55.3	9.3	102.3	894.3	9,326.1	1,177.8	3,703.6
10	6,284.2	1,526.5	12.4	53.0	10.1	124.0	920.5	8,930.7	1,087.3	3,167.6
11	10,210.6	2,599.5	34.9	124.6	10.4	300.6	1,675.7	14,956.3	961.0	3,079.2
12	16,081.9	3,405.6	65.8	272.9	65.4	697.6	2,605.7	23,194.9	1,010.4	3,034.7

연월일	베이컨 류					소시지 류			
	베이컨	로스베이컨	슬더베이컨	기타	소계	원나	프랑크	리오나	보로나
1986년	45,306	1,078	7,870	3,351	57,606	155,601	47,000	631	19,048
1987	50,267	872	7,866	4,103	63,109	167,646	44,453	593	19,748
1988	55,478	888	7,464	4,646	68,475	175,815	42,061	524	20,140
전년대비	110.4	101.8	94.9	113.2	108.5	104.9	94.6	88.3	102.0
1989년 8월	4,418.3	55.8	520.3	394.1	5,388.5	15,365.0	4,237.3	34.5	1,544.1
9	4,838.3	57.6	494.5	388.3	5,778.7	17,348.0	3,569.0	37.2	1,483.4
10	5,197.2	54.6	554.5	438.7	6,245.0	16,308.7	3,703.2	46.0	1,577.9
11	5,109.2	107.4	658.8	453.5	6,328.9	14,857.4	3,549.3	57.9	2,129.6
12	5,178.8	157.2	827.7	498.7	6,662.4	14,399.6	3,354.4	80.5	2,765.0

연월일	소시지 류								혼합제품			합계
	건조 소시지	반건조 소시지	간 소시지	간 페이스트	가압 가열	무염지	기타	소계	프레스 햄	소시지	가압 가열 소시지	
1986년	7,384	3,218	32	41	1,101	5,718	13,568	253,341	2,756	2,949	1,555	497,581
1987	7,362	3,016	35	30	1,196	6,380	13,428	263,875	3,144	2,402	1,334	516,322
1988	8,091	3,050	34.5	25	1,580	7,571	15,993	274,883	2,579	2,367	589	529,133
전년대비	109.9	101.1	98.6	84.5	132.1	118.7	119.1	104.2	81.9	98.6	44.1	102.5
1989년 8월	670.7	243.8	2.8	2.6	108.6	551.8	1,221.6	23,982.8	179.6	150.3	48.1	45,464.1
9	600.2	244.2	6.8	1.6	118.3	807.8	1,391.9	25,608.4	130.8	161.9	48.9	45,936.2
10	581.0	223.8	5.1	1.9	119.9	848.0	1,276.7	24,692.2	123.4	156.1	49.1	44,451.4
12	744.0	219.1	5.7	2.2	126.8	772.2	1,298.2	23,762.4	118.4	171.2	39.1	49,416.5
1990 1	947.6	311.0	6.9	2.1	82.1	683.3	1,429.2	24,061.7	109.8	132.2	42.0	58,248.1

• 자료 : 日本 THE MEAT JOURNAL '90, 4.