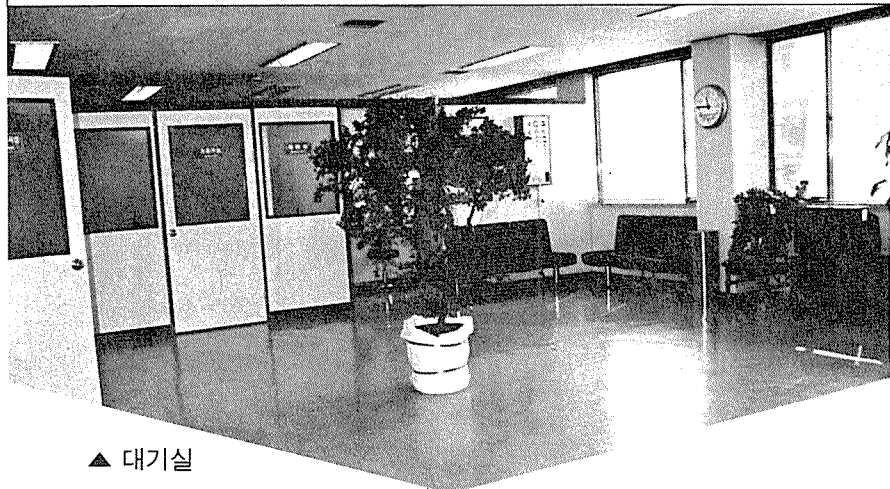


## 강동위원의 이모저모

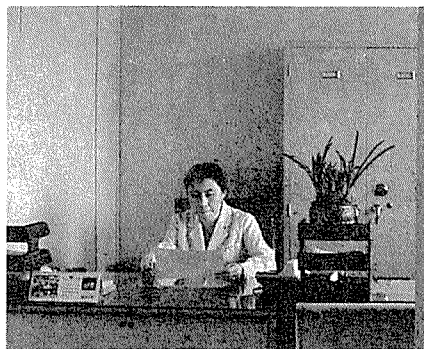


▲ 대기실

▼ 전화 상담 및 접수실



▼ 소장실 (사진은 이상연 소장)



▼ 내원자 상담

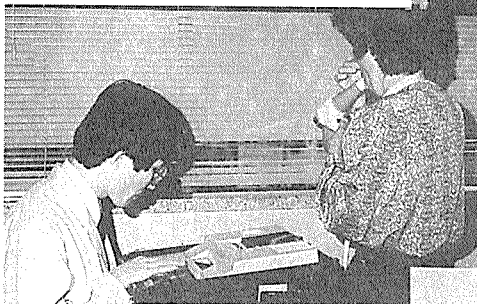




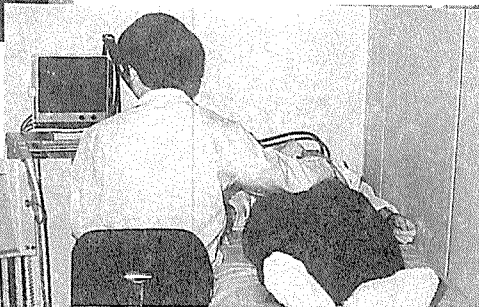
▲ 혈압측정



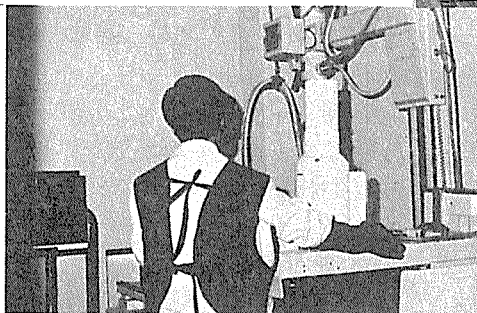
▲ 채혈 · 채뇨실



▲ 호흡기능 검사



▲ 초음파 검사



◀ 위루시 X-Ray