

1.

합 금 명	매 물 재	매 물 재 제조업체	매물재의 혼 수 비	매물재의 종 류	매물재의 적 소환온도	매물재의 적 소환온도	합금의 용융온도
New young	Hi-Temp	Whip-Mix Corporation U. S. A	0.16	Phosphate bonded	600℃ ~ 1200℃	900℃ ~ 950℃	1330℃
Hi-Crown	"	"	"	"	"	"	1150℃
CB-80	"	"	"	"	"	"	1150℃

2. 실험방법

1)

(Die) Silicone rebber base
Artificial stone Hand mixing
105 Die 1
Maves社(U.S.A) Green Inlay Wax Die
가 0.5~0.8mm
Alcohol torch
lamp Wax pattern

pattern Ring 1
105 5
3 21
3) Burn out and Casting
Hi-Temp Investment Non-precious alloys
900 600 , 700 ,
800 900 , 1000 , 1100 , 1200 fh
100 3 3
1 5

2) Spruing Investing

Wax pattern 18Gauge
wax spure Incisal edge
Reservoir Spure 10mm
Crucible former
Spruing Die
Wax pattern
Wetting agent Surcast(G.C Dental Industrial Corp.)
Hi-Temp Investment
W/P ratio 0.16(16ml/100g)
Hand mixing Wax pattern 1
Asbestos Ring
Ring Wax Pattern
Hi-Temp Investment 2
Ring Wax pattern
6mm Ring
30mm, 40mm Wax

600 2 600 0
, 700
0 700 2 30
800 0 800 3
, 900 0 900 3 30
, 1000 0 1000
3 50 , 1100 0
1100 5 30
1200 0 1200 6 20
30
3
3 New Metal 3
가 Kerr
Corporation (U.S.A)
3
Ring Ring
Casting body

III. 결 과

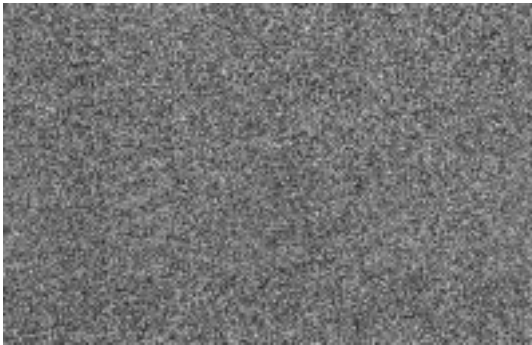
Round bur
 Sand blasting
 Casting body
 Round bur
 Die
 Die Cervical line
 Casting body
 Die Cervical margin
 Mold
 Cervical margin Die
 Cervical
 600 2 1-7
 2 1-a, b, c
 New young Mold
 5 Hi-Crown
 CB-80 5
 가 CB-80
 Hi-Crown
 700 2 2-a, b, c
 New young Mold
 5 Hi-Crown
 가
 5 가
 CB-80
 5 1 가

2.

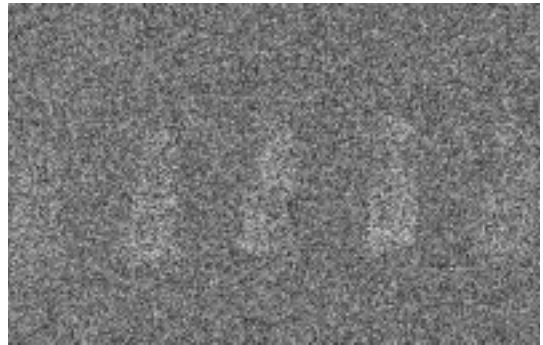
소환온도	금속종류	주조불량	불완전주조채	금속산화	완전주조채
600°C	New young	5	-	-	-
	Hi-Crown	-	5	-	-
	CB-80	-	5	-	-
700°C	New young	5	-	-	-
	Hi-Crown	-	5	-	-
	CB-80	-	4	-	1
800°C	New young	5	-	-	-
	Hi-Crown	-	5	-	-
	CB-80	-	3	-	2
900°C	New young	-	1	-	4
	Hi-Crown	-	4	-	1
	CB-80	-	1	-	4
1000°C	New young	-	4	-	1
	Hi-Crown	-	5	-	-
	CB-80	-	1	-	4
1100°C	New young	-	3	-	2
	Hi-Crown	-	3	-	2
	CB-80	-	1	-	4
1200°C	New young	-	2	-	3
	Hi-Crown	-	-	5	-
	CB-80	-	2	-	3

4
 Hi-Crown
 800 2 3-a, b, c
 Hi-Crown
 80 5 2 3
 Hi-Crown
 900 2 4-a, b, c

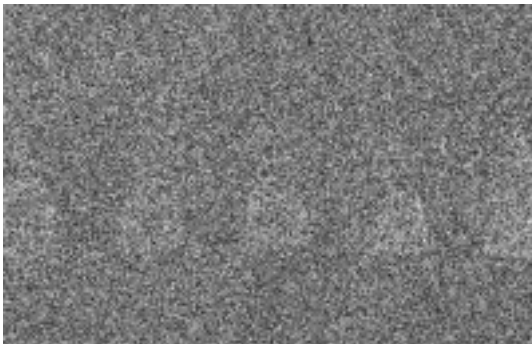
4
 New young 5 4
 , 1 Hi-Crown 5
 가 1 4
 . CB-80 5 가 4
 1
 1000 2 5-a,b,c
 New young 5 1
 가 4 Hi-Crown 5
 . CB-80 5
 가 4 가 1



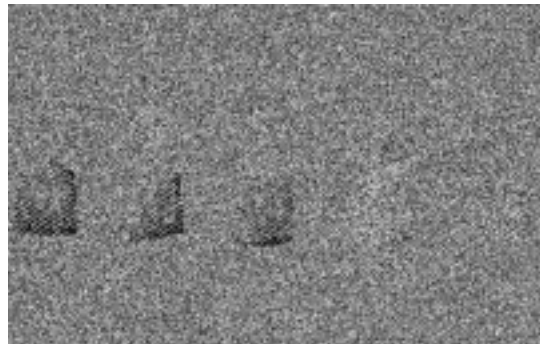
1-a. New Young



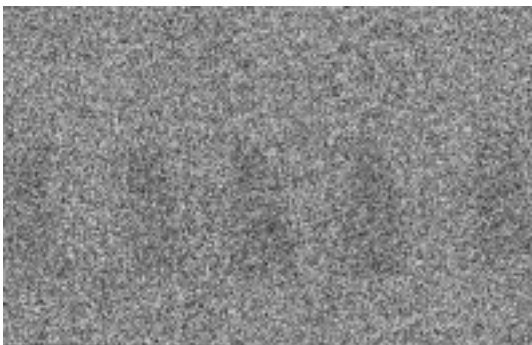
2-a. New Young



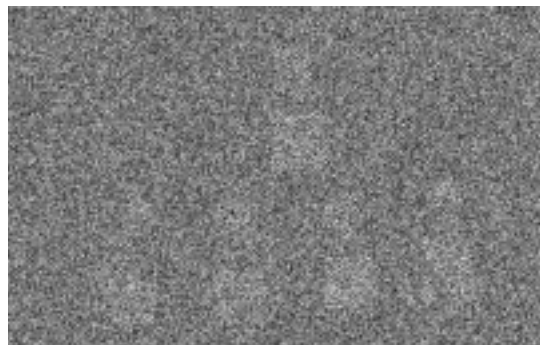
1-b. Hi-Crown



2-b. Hi-Crown



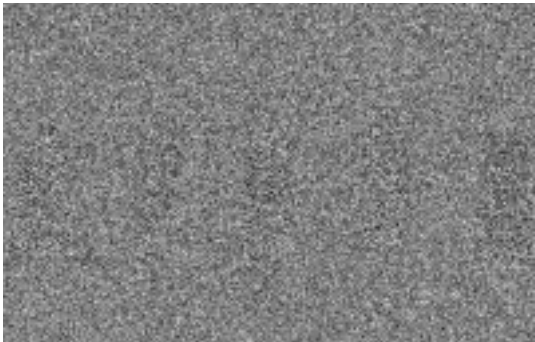
1-c. CB-80



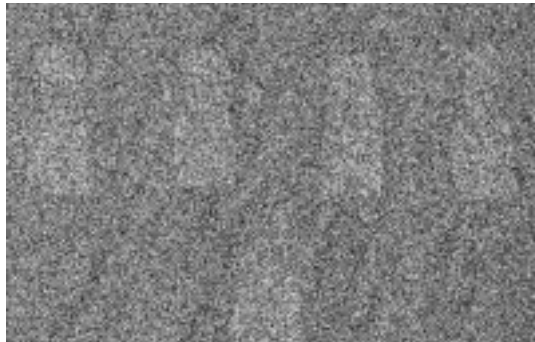
2-c. CB-80

1100 2 6-a,b,c
 New young 5 가 2
 가 3 Hi-Crown 5
 가 2 3
 가 . CB-80
 5 가 4 1
 Margin
 1200 2 7-a,b,c

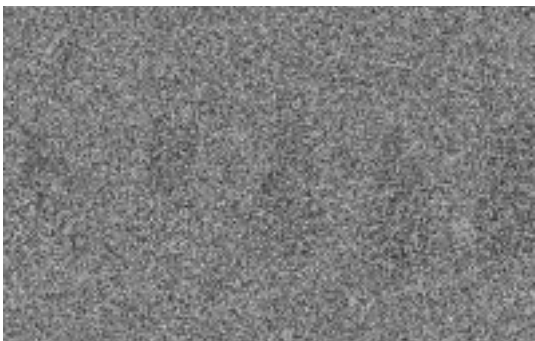
New young 5 가 3
 가 2 . Hi-Crown 5
 3 Cervical Margin 가
 2 Cervical Margin
 . CB-80 5
 가 3 3
 Cervical Margin 가



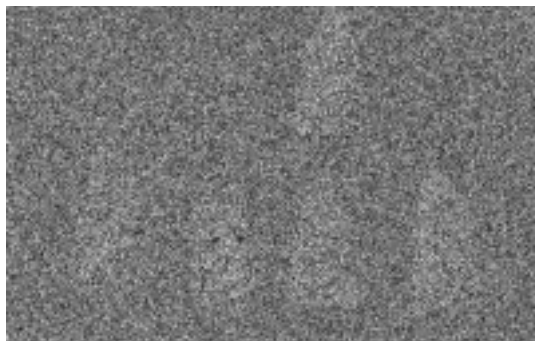
3-a. New Young



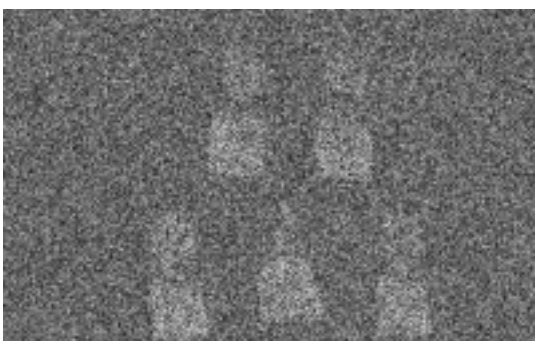
4-a. New Young



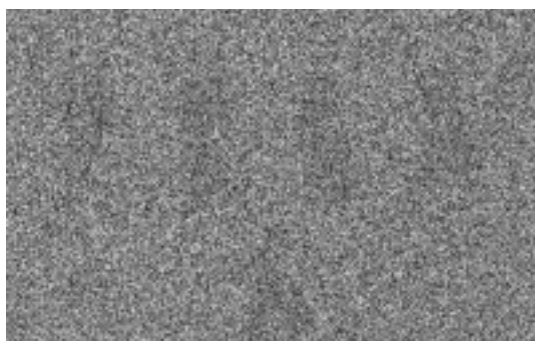
3-b. Hi-Crown



4-b. Hi-Crown



3-c. CB-80



4-c. CB-80

IV. 총괄 및 고안

가

가

가

Acid

가

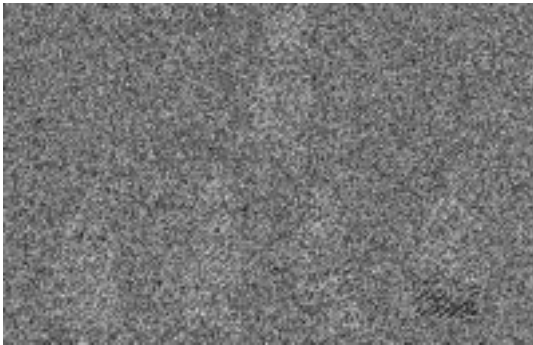
가

가

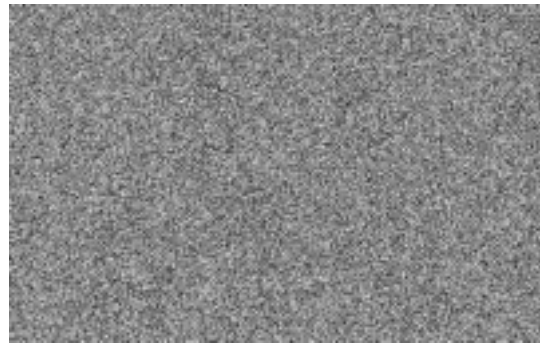
가 1970

가

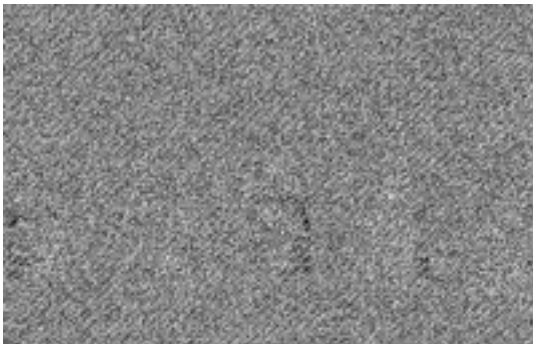
가



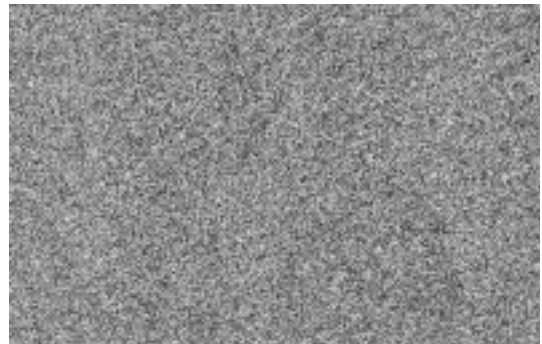
5-a. New Young



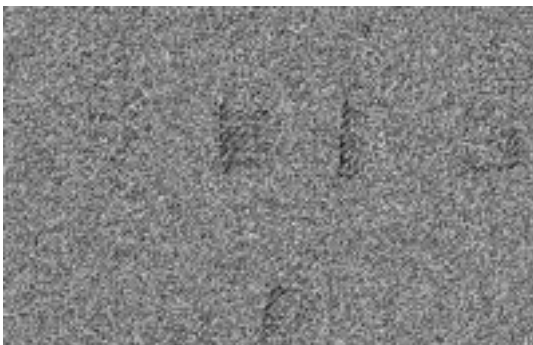
6-a. New Young



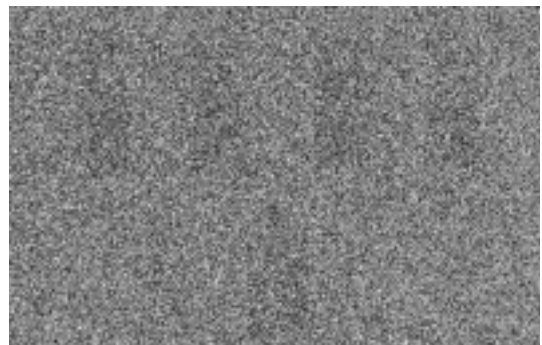
5-b. Hi-Crown



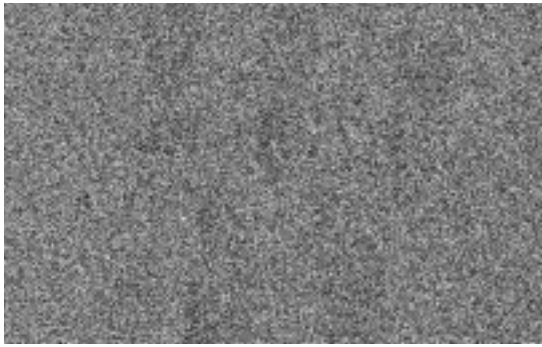
6-b. Hi-Crown



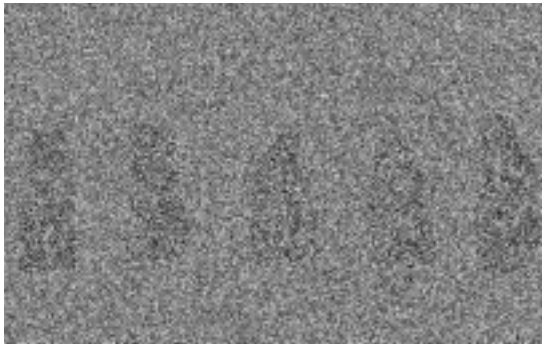
5-c. CB-80



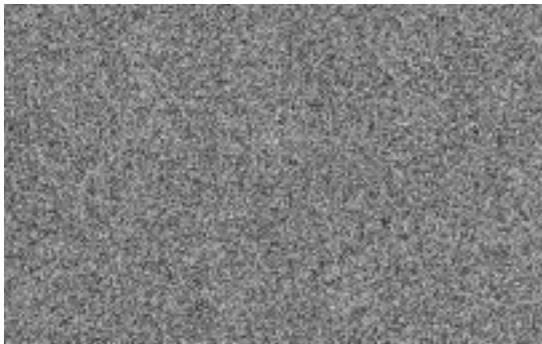
6-c. CB-80



7-a. New Young



7-b. Hi-Crown



7-c. CB-80

100
7
Ring 5 가
600 5 1 가
3 가
700 가 3 CB-80
가 1 4
600 dml
가 800 700 CB-80
가 1 2
가 Crown CB-80 New young Hi-
가
CB-80 CB-80 가 Hi-Crown
Hi-Crown
900 가 가
New young Hi-Crown
1000 950
가 5
CB-80 4 가 Hi-
Crown 1rom New young 2
1100 가
가 900 2
8
1200 가
가 6 CB-80
New young 3 Hi-Crown
가 가
가 가
가 New young
가 900
가
Hi-Crown 1100 가
2

Ni-Cr Ni-Cr 가

Frame 가

가 Ni-Cr 3가

CB-80, New young, Hi-Crown 3가
600 1200

3 가
 가
 CB-80 3 가

V. 결 론

Ni-Cr
 young, Hi-Crown 3가 CB-80, New
 100 600 1200
 7
 1. Hi-Crown, New young, CB-80 3가 Ni-
 Cr 가 CB-80
 2. CB-80 600 1200
 900 , 1000 1100 5 4
 3. 3가 가
 900

참 고 문 헌

1. Phillips, R.W.: Skinner's science of dental materials, ed. 8., W.B. Saunder's Co., Philadelphia, 547, 1982.
2. Vincent, P.E., L. Stevens, and K.E. Basford: A Comparison of the Casting ability of precious and nonprecious alloys for porcelain Veneering, J. Prosth. Dent., 37: 527, 1977.
3. Duncanson, M.G.: Nonprecious metal alloys of fixed restorative dentistry, Dent. Clin. North Am., 20: 423, 1976.
4. 윤 창근: Laboratory Manual of Crown and Bridge, 대학서림, 157, 1984.
5. Duncan, J.D.: Casting accuracy of Ni-Cr alloys: Marginal discrepancies, J. Dent. Res., 59: 1164, 1980.
6. 김 응철: 관교의치 및 금속·도재 보철물용 Ni-Cr 합금과 Ag-Pd 합금의 재사용에 따른 주조 재현성의 변화, 의학기술논집 제14권 제1호, 1985.