

보철물과 치주조직

(Dental prosthesis & periodontal tissues)

원광대학교 치과대학부속 치과병원

목 차

functional form)

가

1. Premature Occlusal contact()
2. Overhanging crown margins()
3. Rough surface()
4. Overcontoured crown
5. Surface Contact & open contact
6. Improper bridge pontics form
7. Telescoping bridge(removable)
8. Remorable partial dentures
9. Fixed partial denture

II . 잘못된 보철물로 인해 치주질환에 미치는 영향

1. Premature Occlusal contact
(조기교합접촉)

가

가

I . 서 론

가

Zone-of codestruction
(alveolar crest fibers transse ptal fibers)

가

angular bone resorption

Co-destructive factors

(physiologic anatomic form or

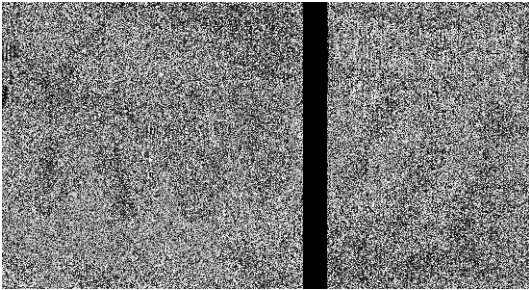
가

2. Overhanging crown margins (과잉변연)

Gingival margin crown open margins full cast gingival sulcus

(irritation)

(Fig. 1)



3. Rough surface (거칠은 면)

(Self-cleansing)

polishing bacterial deposita

irritation() 가

4. Overcontoured crown

overcontoured crown

irritation

5. Surface Contact & open contact

contact point가 point contact surface contact

interdental papillae() 가 plaque control

가

contact point가 open contact food impaction

6. Improper bridge pontics form

pontics

attached gingiva() 가

marginal gingiva(

) 가

가

pontics hygiene aids

pontics 2mm 가 space

pontics

pontic saddle shape

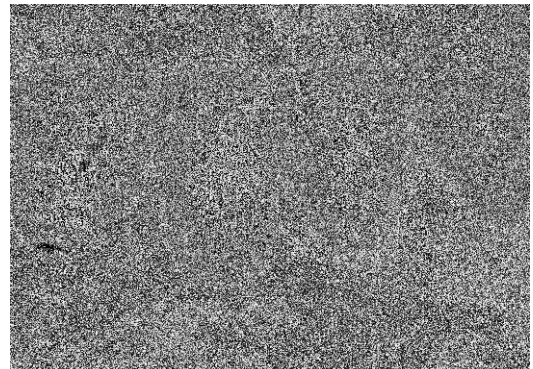
mobile oral mucosa hygiene aids

pontics

pontics

blood necrosis()

(Fig. 2)



7. Telescoping bridge(removable)

가 가
telescope construction removable bridge or 가
partial denture

가

Telescope crown margin
denture base connectors(:
palatal strap)가 가
margin telescope crown
connectors denture base 가

III. 결 론

crown & bridge wax pattern
buccolingual Surface() Inter proximal
surface

crowns, pontics
attachments가

가
crowns

8. Remorable partial dentures

가 가
torque force 가

bacterial plaque가
가

1. occlusion functional disturbances(
)가

lingual bar, lingual apron, clasp
partial denture

2. margins

가 marginal gingiva
가

3. crown cantour dimension
bulbous plaque
retention overcontour crown

loose denture denture
denture
frictional damage candida
albican denture stomatitis

undercontoured crown
4. interdental areas interdental- brushes,
perio-did

9. Fixed partial denture

margin
irritation 가
가
open interproximal

5. contact area single crown
point contact
crown & bridge solder joints
가

embrasure
convex

bulky

6. pontic or cantilververed unit
line round

