

義齒周圍組織의 機能印象 채득법에 의한 0°臼齒의 Full Denture 製作法

木浦實業專門大學 齒技工科

金 義 男

ABSTRACT

“ A Study of Farbricating of Full Denture, Which is Used Functional Imp and Zero-degree Artificial Posterio Teeth ”

Ui Nam Kim

Department of Dental Laboratory Technology Mog Po Junior College

When full denture is being fabricated, pronunciation, recovery of aesthetics of function and mastifactory function should be satisfies for patients.

To satisfy for the function of denture, following is the difference between this new way of fabricating and formerly one of it.

1. The size of fabricating tooth which is harmony of original oral structure for patients is deaded by manufacturing labial index and artificial tongue.

2. By the use of artificial tongue and labial index, the arranges of artificial tooth is to become harmony of oral structure.

3. Formation of gingival decided functional impression which is used by impression paste, is harmony of oral structure.

Therefore, this full denture can be satisfied with pronouncing oral function of recovery of aesthetics as well as mastifactory through physiological movement of oral tissue not disturbed with anything but cooperated drastically.

In manufacturing of this full denture, both dentist and dental technician under cooperation need to proceed the work on the base of importance of communication.

목 차

. 緒 論

. 製作總論 製作方法

1. 製作總論

2. 製作方法

基礎床 製作

Occlusal rim

3. 機能印象

4. Labial index

5.

6.

7. 生理的 齒 形成

.

I. 緒論

義齒 機能 發音 審美性 口腔機能
 能 咀嚼機能 가
 機能 充分 滿足 口腔各部
 調和 가
 周圍組織
 生理運動

舌側, 가
 口脣, 頰, 舌
 wax Z.O.E

cast occlusal rim
 齒 形成
 目的 通法 患者

2. 製作方法 基礎床 製作

Individual tray final impression
 boxing method Cast 基礎床
 shellac base plate
 heat gun 가
 Cast 適合
 peripheral border
 Cast 가 6mm
 가
 6mm
 構造가

周圍組織 生理運動

組織

全顎

full denture

Occlusal rim

Occlusal rim hard type base
 plate wax
 Occlusal rim (Fig. 1)
 22mm, 17~18mm, 齒槽頂
 4mm
 hard type Base plate wax
 Occlusal rim Soft wax(Utility
 wax) 脣側, 頰側, 舌側 口蓋
 前方
 (Fig. 2)

II. 製作總論과 製作方法

1. 製作總論

peripheral border area
 individual tray final
 impression Boxing method
 cast

口脣, 頰

近遠心 頰舌間
 Wax denture

Z.O.E

口脣, 頰, 舌
 脣側, 頰側,

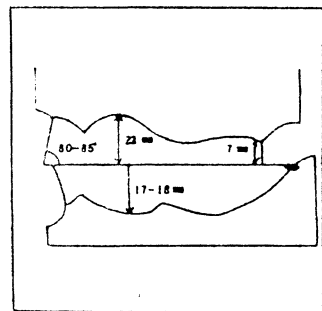


Fig 1. Occlusal rim

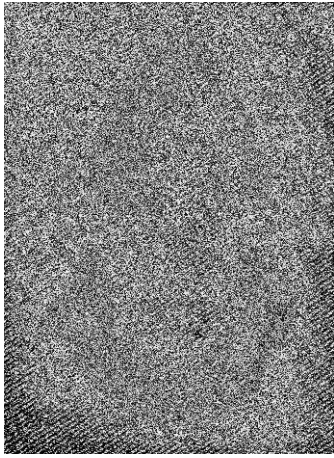


Fig 2. Soft wax(Utility wax)
Occ. Rim

口脣頰
가
水 soft wax
最終回 “ ”
가 area
口腔組織 咬合床 adhesive
powder 口腔內

3. 機能印象

hard type base plate wax soft
wax(Utility wax) Occlusal rim
hand torch flame soft
Cast
adhesive powder

咬合床 cast
2~3 40
Soft wax adhesive powder
口腔內 20 가
周圍組織 嚥下運動 印
象 生理的 .(Fig. 3)
機能印象 咬合床 cast

soft
wax

嚥下運動
Occlusal rim 中心咬合
頰筋 口輪筋

撒法
Soft wax
2~3

soft wax
3~4
咬合床

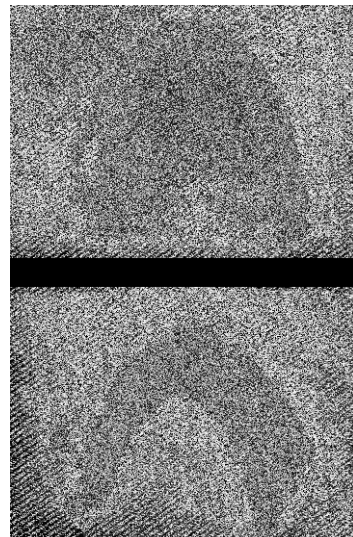


Fig 3. 口腔內 生理的
Occ. Rim.

4. Labial index 제작

index 4mm Cast ledge
 4mm " V " 2
 Vaseline 1
 Plaster index 5mm

.(Fig. 4)

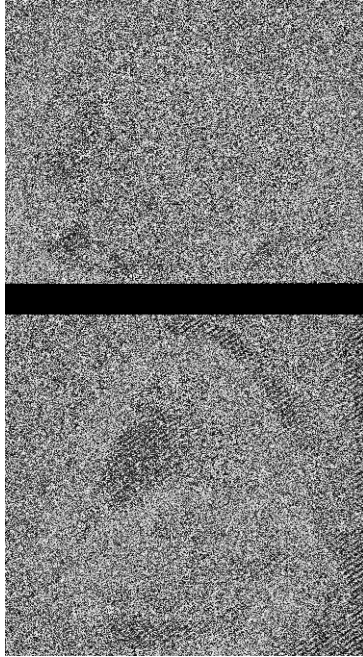


Fig 4. index

Labial index

Labial

脣線, 下脣線

人工齒

Labial index

Labial index

Labial surface

.(Fig. 5)

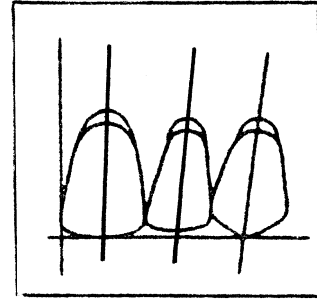


Fig 5.

[:]

:

:

[:]

:

:

0.5~1.0mm

[:]

:

5. 인공설 제작

Key Way가 Cast " + " Under cut
 咬合床 Vaseline plaster Oulusal
 clay

.(Fig. 4)

2 1
 Labial index
 Occlusal rim Cast

mounting

, Labial index

angle

: incisal tip

6. 인공치 배열

正中線, 左右口角線, 上

[:]

:

.(Fig. 6)

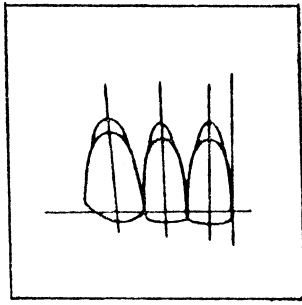


Fig 6.

1.5mm,
[]
1.5mm
[]
1.5mm

心位 Cast base

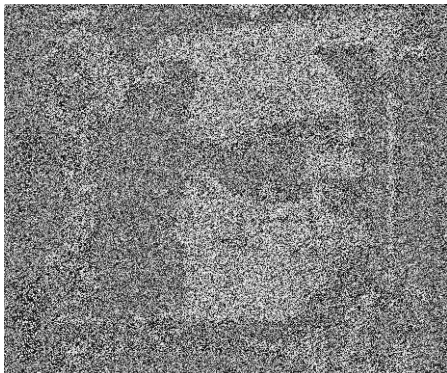


Fig 7. 1, 2, 1

白後三角 1, 2, 1
起始部 1
2
8) (Fig.

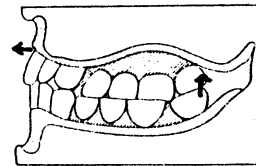
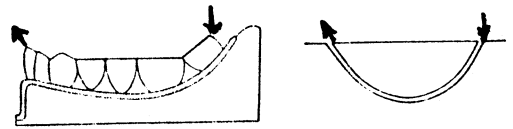


Fig 8.

30.
(Fig. 9)

舌 space 舌 生理
運動 舌側 “+”

遠

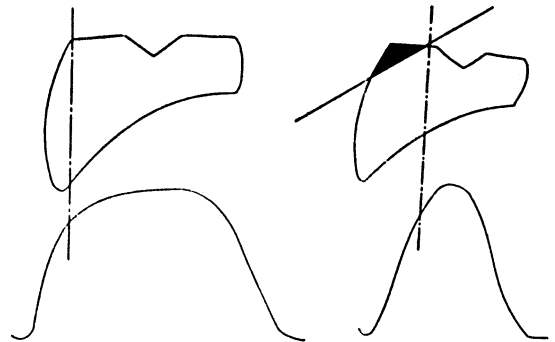
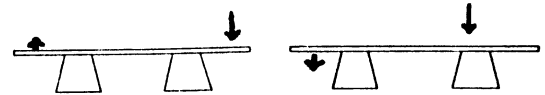


Fig 9.

30.

1 . 2
1

(Fig. 10)

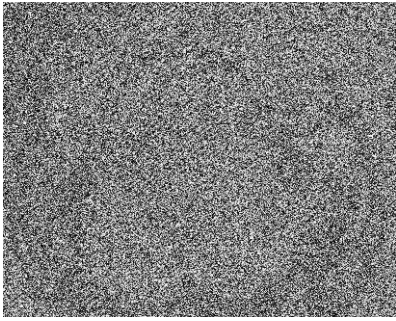


Fig 10. Labial index

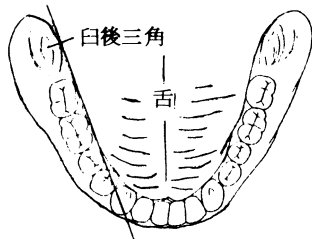


Fig 11.

space

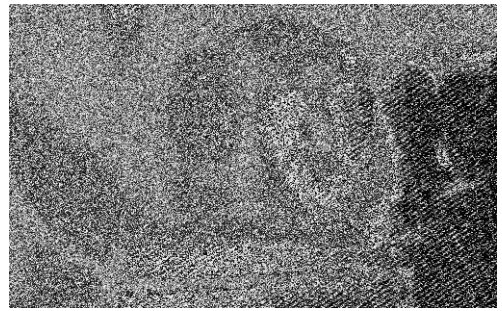


Fig 12. head type base plate wax

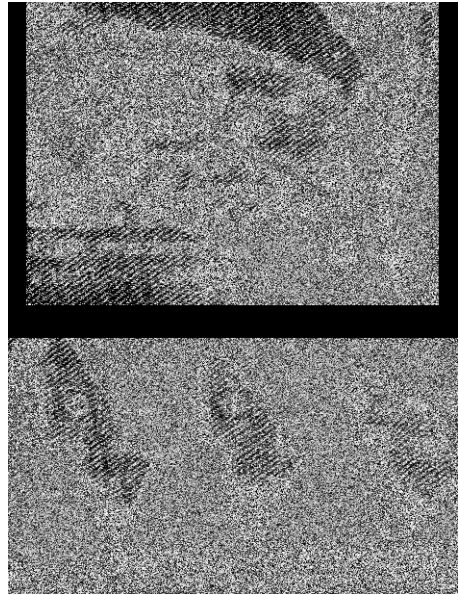


Fig 13. 2 1 1

人工齒

Wax denture

7. 生理的인 齒 形成

機能印象

人工齒

head type base plate wax
(Fig. 12)

inpression paste(Z.O.E.P.) mix
wax denture

1/3, 2 2/3, 1
(Fig. 13)

paste
soft wax

logy, p.32-34, 1982.

9. D.D. Krajicek 외 2인 : Observation on the histologic features of the human

edantulous ridge. Part II, Connective tissue, Mosby, p.682-687, 1984.