

The Brachyuran Crabs of Cheju Island, Korea (Crustacea:Decapoda)

Kim, Hoon Soo and Chang, Cheon Young

(Department of Zoology, College of Natural Sciences, Seoul National University,
Seoul, 151 Republic of Korea)

濟州島産 短尾類(甲殼類:十脚類)의 分類學的 研究

金 熏 洙 · 張 千 永
(서울大學校 自然大 動物學科)

적 요

제주도산 게류상을 밝히고 이것들을 분류하기 위하여 미등정 기존 표본들과 1985년 1월-5월 사이에 15개 지소에서 채집된 표본들을 동정하고 아울러 문헌상의 기록도 종합·정리하였다. 그 결과 16과 104종의 분류목록을 얻었다. 104종 중 제주도 미기록종이 8종이며, 이중 *Pugettia minor*, *Menaethius monoceros*, *Echinoecus pentagonus* 등 3종은 한국미기록종인 바 도판과 함께 Remarks 등을 기록했다. 제주도산 게류 104종은 한국 기지종 183종의 56.8%를 차지하며, 104종 중 41종(39.4%)은 한국에서는 제주도 해역에서만 발견된 것이고 62종은 남방형이다.

Key words: Crustacea, Decapoda, Brachyura, Cheju Island.

INTRODUCTION

The faunal studies on the crabs are relatively well made in comparison with other crustacean taxa in Korea. Kim brought together all the species known by that time to issue a monograph of Korean crabs (Kim, 1973), in which he described 168 species of 18 families in detail. The history of investigations performed prior to the monograph are omitted here, for it gave full particulars on the history of them in Korea. Since then, Kim and Sakai (1972) described *Sakaina koreensis* n. sp., and Takeda and Kim (1977) *Actumnus marissinicus* n. sp., with which Kim and Kim (1982) and Kim (1985) reported 6 species and 5 species newly known from Korea in their reports respectively.

Kim (1973a), Kim and Lee (1978), Kim *et al.* (1979), Kim, Lee and Kim (1979), Kim *et al.* (1981), Kim and Choe (1981), Choe and Kwon (1982), Kim and Kwon (1982), Kim *et al.* (1983), Lee *et al.* (1984) fragmentally reported the brachyuran fauna from the various regions of Korea-Paekryöngdo and Taechöngdo; Tongkyögyölbijöldo, Sökto and Kungshido; Köjedo and its adjacent five islands; the lower reaches of the Naktong River;

본 연구는 1984년도 문교부 학술연구조성비에 의해 "한국산 동·식물의 종속지적 연구(I)"라는 제목 하에 연구된 것의 일부임.

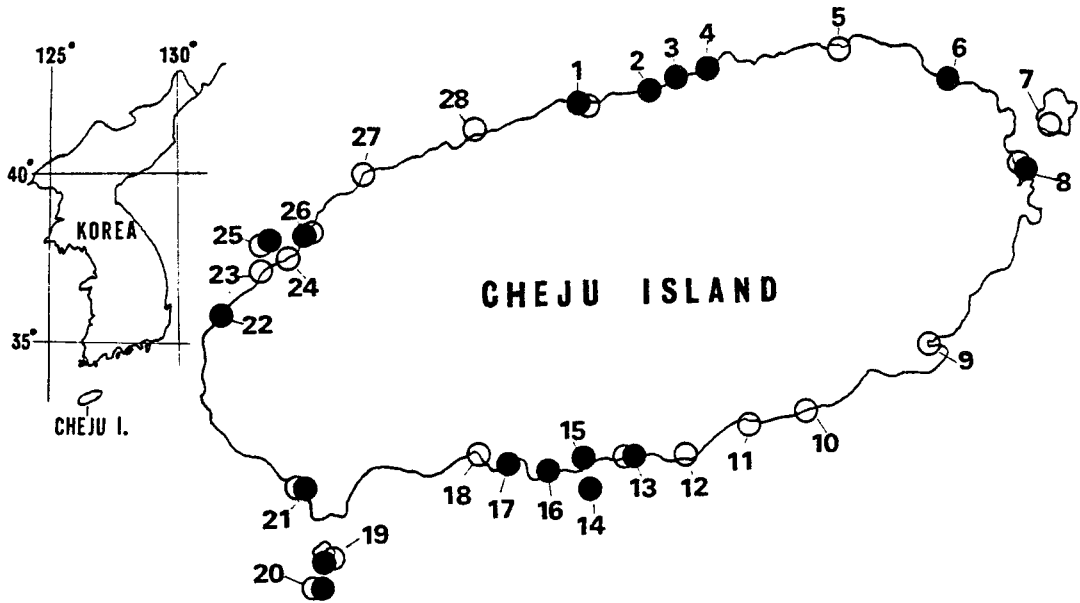


Fig. 1. The map showing the localities of previous and present collections.

[● : present study; ○ : literature record]

1. Cheju (濟州)	2. Samyang (三陽)	3. Sinch'on (新村)
4. Choch'ön (朝天)	5. Kümnyöng (金寧)	6. Sehwa (細花)
7. Udo (牛島)	8. Söngsanp'o (城山浦)	9. P'yosön (表善)
10. Namwön (南元)	11. Wimi (爲美)	12. Pomog-ri (甫木里)
13. Sögwip'o (西歸浦)	14. Pömsööm (범섬)	15. P'öphwan (法還)
16. Kangjöng (江汀)	17. Taep'o (大浦)	18. Chungmun (中文)
19. Kap'ado (加波島)	20. Marado (馬羅島)	21. Mosulp'o (慕瑟浦)
22. Sinch'ang (新昌)	23. Kümrüng (金陵)	24. Hyöpchae (挾才)
25. Piyangdo (飛揚島)	26. Hallim (翰林)	27. Aewöl (涯月)
28. Iho-ri (梨湖里)		

Inchön and southern part of Kanghwado; Ulungdo and Tokto; Tökchögdö; the islands adjacent to Wando; Aninjin (Kangwon-do); Kijang (Kyöngsangnam-do) in order respectively. On the crabs of Cheju I., Kim and Rho reported 76 brachyuran species of 14 families in their report on the benthic animals in Cheju Island region (Kim and Rho, 1971). Thereafter Kim and Kim (1982), in their report on classification and geographical distribution of Korean crabs, reported 93 species of 16 families in Cheju I., and then separated the Cheju area from the previous 3 regions (the Sea of Japan, the Korea Strait and the Yellow Sea) in consideration of the species diversity and the geographical distribution form.

Summing up the results of the foregoing papers, the total of 180 brachyuran species (or subspecies) of 18 families have been known from Korea, of which 95 species of 16 families have been reported from Cheju I. While the faunal study of Korean crabs is relatively well performed as mentioned above, still more researches are needed, especially on the crabs of

Cheju I., for Cheju I. shows a considerably abundant brachyuran species of its own (in Korean waters 38 species have occurred only in Cheju I., prior to this investigation). For that reason, the authors intend to clarify the brachyuran fauna of Cheju I. in detail, moreover to gain a better understanding of the fauna of Korean crabs and their distribution.

MATERIALS AND METHODS

Materials of this investigation consist of both specimens collected from 15 localities in Cheju I. during the period from January 14 to May 5 in 1985 and also other specimens collected before this period and not reported hitherto (Fig.1). Moreover, the previous literature records on the brachyuran fauna in this area were collectively examined for preparing the checklist.

Collections were chiefly made by the authors with various methods at the intertidal zone and with the help of SCUBA team at the shallow waters. Besides that, many specimens were also obtained from the materials caught by nets, weirs and the fishing reel with multiple hooks. They were fixed and preserved in about 94% alcohol.

For the morphological study, a stereomicroscope and a research microscope were used. The species newly known from Korea were described with figures which were made with a camera lucida. Classification above the family level followed Bowman and Abele (1982).

All specimens reported are deposited in the Department of Zoology, Seoul National University.

RESULTS

The results of examining the literature records and the specimens of the Cheju Island brachyuran crabs are as the following systematic account in which single asterisk (*) indicates the species hitherto collected only from Cheju I. and its adjacent waters in Korea, double asterisks (**) do the species newly reported from Cheju I. by this study, and triple asterisks (***) do the species hitherto unrecorded from Korea. Under each species' name, the localities are cited from literature records, and then also is given the material examined when specimens were observed.

Systematic account

- Superclass Crustacea Pennant, 1777 갑각 상강
- Class Malacostraca Latreille, 1806 연갑 강
- Subclass Eumalacostraca Grobben, 1892 진연갑 아강
- Superorder Eucarida Calman, 1904 진하 상목
- Order Decapoda Latreille, 1803 십각 목
- Suborder Pleocyemata Burkenroad, 1963 포란 아목
- Infraorder Brachyura Latreille, 1803 단미 하목
- Section Dromiacea De Haan, 1833 해변치레 절
- Superfamily Dromioidea De Haan, 1833 해변치레 상과
- Family Dromiidae De Haan, 1833 해변치레 과

1. **Dromia dehaani* Rathbun, 1923 해면치레
Sögwip'o (Kamita, 1941 ; Kim, 1973 ; Kim, 1985)
2. **Dromidia unidentata* (Rüppell, 1830) 털보해면치레
Kap'ado (Kim, 1973)
3. *Cryptodromia tumida* Stimpson, 1858 갯가해면치레
Sögwip'o (Kim, 1973)
Material examined: Sögwip'o (Sammaebong) 1우, Jan. 18, 1985, (H.S. Kim);
Piyangdo, 2♀♀, May 2, 1985, (H.S. Kim)
4. *Petalomera japonica* (Henderson, 1888) 갯숨물히
Sögwip'o (Kim, 1973)
5. **Petalomera granulata* Stimpson, 1858 소름물히
Sögwip'o (Kim, 1973)

Section Archaeobrachyura Guinot, 1977 원시단미 절
Superfamily Homoloidea De Haan, 1839 호물라 상과
Family Latreillidae Stimpson, 1858 사슴게 과

6. **Latreillia phalangium* De Haan, 1839 사슴게
Sögwip'o (Kim, 1973 ; Kim & Kim, 1982)
7. **Latreillia valida* De Haan, 1839 얼룩다리사슴게
Sögwip'o (Kim, 1973 ; Kim & Kim, 1982)

Superfamily Raninoidea De Haan, 1839 닭게 상과
Family Raninidae De Haan, 1839 닭게 과

8. *Ranina ranina* (Linnaeus, 1758) 닭게

Sögwip'o (Kamita, 1941 ; Kim, 1973)

9. **Lyreidus stenops* Wood-Mason, 1887 비파게
Sögwip'o (Kim, 1973)

Remark: This species was known previously (Kim, 1973, p. 269 ; Kim and Kim, 1982, p. 148) as *Lyreidus integra* Terazaki, 1902 (Miyake, 1983, p. 197).

Section Oxystomata H. Milne Edwards, 1834 침구 절
Superfamily Leucosioidea Samouelle, 1819 밤게 상과
Family Calappidae De Haan, 1833 금게 과

10. **Mursia armata* De Haan, 1837 금게불이
Sögwip'o (Kim, 1973)
11. **Mursia trispinosa* Parisi, 1914 세가시금게불이
Sögwip'o (Kim, 1973)
12. **Calappa hepatica* (Linnaeus, 1764) 간만두게
Cheju I. (Sakai, 1937)
13. *Calappa lophos* (Herbst, 1782) 범무늬만두게
Sögwip'o (Kamita, 1941 ; Kim, 1973)
14. **Calappa terraereginae* Ward, 1936 툼만두게
Cheju I. (Sakai, 1937)

15. *Matuta lunaris* (Forskål, 1775) 금계
Cheju (Kim, 1973) ; Kümnyöng (Kamita, 1941) ; Söngsanp'o (Kim, 1973) ; P'yosön (Kamita, 1941; Kim, 1973) ; Hyöpchae (Kamita, 1941) ; Aewöl (Kamita, 1941)
Family Leucosiidae Samouelle, 1819 밤계 과
16. **Merocryptus lambriformis* A. Milne Edwards, 1873 세모밤계
Sögwip'o (Kim, 1973)
17. *Myra fugax* (Fabricius, 1798) 긴손밤계
Sögwip'o (Kim, 1973)
18. *Leucosia anatum* (Herbst, 1783) 긴이마밤계
Söngsanp'o (Kim, 1973)
Remark: This species was known previously (Kim, 1973, p. 300 ; Kim and Kim, 1982, p. 149) as *Leucosia longifrons* De Haan, 1841 (Sakai, 1976, p. 116).
19. **Leucosia obtusifrons*, De Haan, 1841 둥근무늬밤계
Sögwip'o (Kim, 1973)
20. *Philyra kanekoi*, Sakai, 1934 두드러기밤계
Söngsanp'o (Kim, 1973) ; Hallim (Kim, 1973)
Section Oxyrhyncha Latreille, 1803 침두 절
Superfamily Majoidea Samouelle, 1819 물맛이게 상과
Family Majidae Samouelle, 1819 물맛이게 과
21. **Pleistacantha sanctijohannis* Miers, 1879 삼천가시게
Sögwip'o (Kim, 1973)
22. *Achaeus japonicus* De Haan, 1839 아케우스게
Sögwip'o (Kim, 1973)
23. **Achaeus spinosus* Miers, 1879 가시아케우스게
Cheju (Kim, 1985)
24. ***Achaeus tuberculatus* Miers, 1879 가는다리아케우스게
Material examined: Cheju, 1♂, Apr. 30, 1985, (H.S. Kim)
25. ***Oregonia gracilis* Dana, 1851 긴집계발게
Material examined: Mosülp'o, 1♀, Jul. 22, 1982, (I.H. Kim)
26. **Zewa okamotoi* Sakai, 1938 어리누덕웃게
Sögwip'o (Kim, 1973 ; Kim & Kim, 1982) ; Wimi (Kim & Kim, 1982)
27. *Pugettia incisa* (De Haan, 1839) 오늬이마물맛이게
Sögwip'o (Kim, 1973 ; Kim & Kim, 1982)
Material examined: Cheju, 1♂, Apr. 30, 1985, (H.S. Kim)
28. *Pugettia quadridens* (De Haan, 1839) 빨물맛이게
Cheju (Kamita, 1941) ; Udo (Kim, 1973) ; Sögwip'o (Kim & Kim, 1982 ; Kim, 1985)
Material examined: Sehwa, 2♀♀, May 4, 1985, (H.S. Kim); Mosülp'o 1♂, 1♀, Jan. 17, 1985, (C.Y. Chang); Sögwip'o (Sammaebong), 1♂, Jan. 18, 1985, (H.S. Kim); Sögwip'o (Sammaebong), 1♂, 1♀, Jan. 18, 1985, (D.H. Kwon); Sögwip'o (Pömsöm), 5♀♀ (young), Jan. 17, 1985, (H.S. Kim); Pöphwan, 1♂ (abnormal form), 1♂ (young), Jan. 19, 1985, (H.S. Kim); Kangjông, 1♂, Jan. 15, 1985, (H.S. Kim);

Sinch'ang, 1♀ (ovi.), May 3, 1985, (H.S. Kim); Piyangdo, 1♂. May 2, 1985, (H.S. Kim)

Remark: One male collected at Pöphwan is an abnormal form, and there is a long bifurcated projection between two long rostral spines.

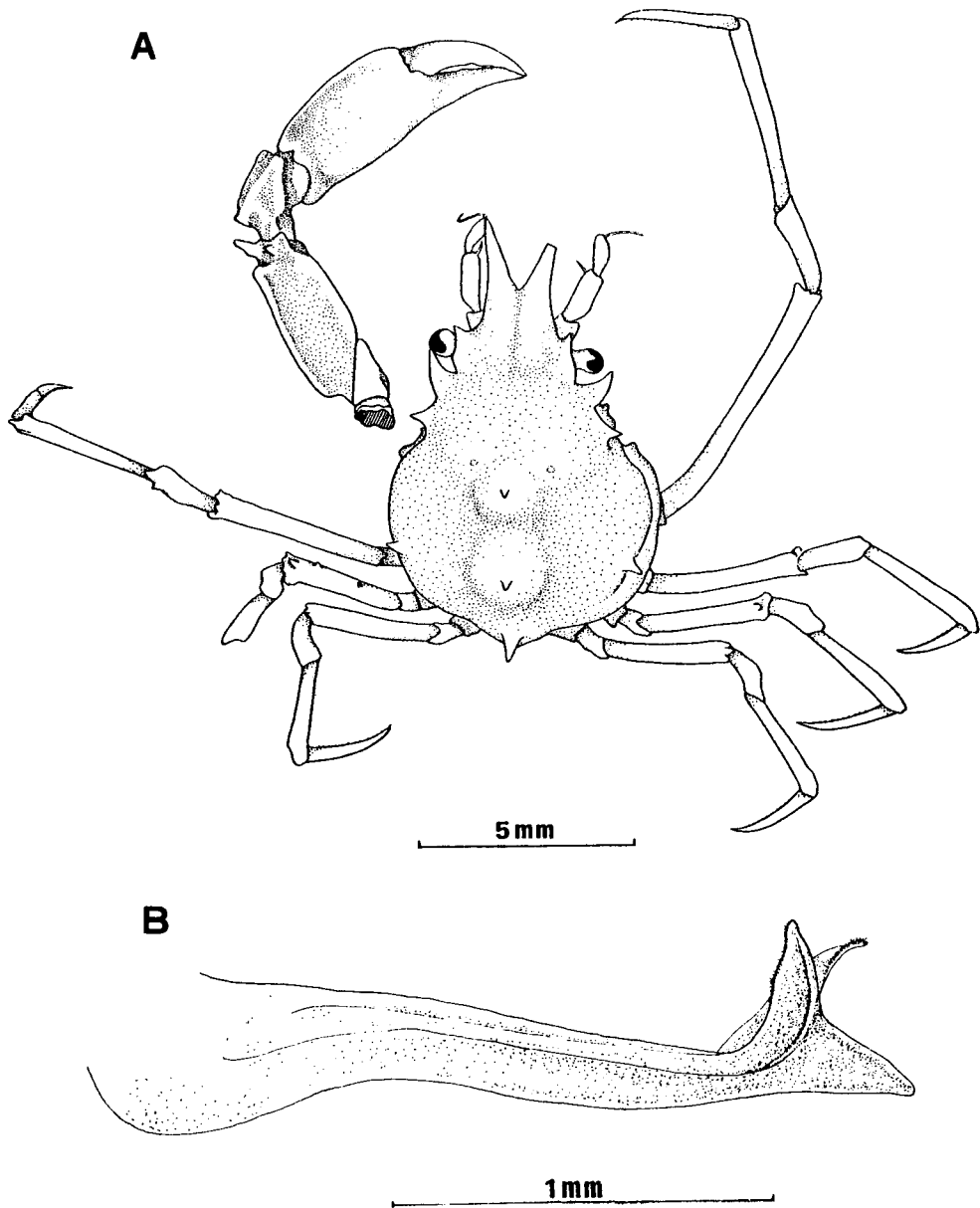


Fig. 2. *Pugettia minor* Ortmann, 1893, A. male, B. right 1st pleopod of male.

29. ****Pugettia minor* Ortmann, 1893 꼬마물맞이게 (신칭) (Fig. 2)

Pugettia minor Ortmann, 1893, (p. 44); Doflein, 1902, (p. 656); Balss, 1924, (p. 26); Yokoya, 1933, (p. 149); Gordon, 1931, (p. 554, text-fig. 33a); Sakai, 1934, (p. 294); 1938, (p. 260, pl. 25, fig. 2, text-fig. 29); 1965, (p. 72, pl. 31, fig. 4); 1976, (p. 199, pl. 83, fig. 2); Takeda & Miyake, 1969, (p. 506).

Material examined: 1♂, Sögwip'o, Feb. 7, 1971, (H.S. Kim)

Measurement: length of carapace 9mm, width of carapace 6.4mm, length of rostrum 2mm.

Remarks: This is the first record from outside of Japanese waters, for this species had been known only from Japan, where it is widely distributed. The present specimen agrees well with the original description by Ortmann (1893) who mentioned about only carapace and cheliped, and gave no figure. It also agrees well with the remarks by Gordon (1931) who gave figures of carapace, chelipeds and first ambulatory leg; with the discription of Sakai (1938) who metioned about carapace, cheliped and the ambulatory legs and gave a figure of first pleopod of male which resemble closely the one of the present specimen (Fig. 2B); with the remarks by Takeda and Miyake (1969) who mentioned the cupped postocular tooth and the flattened first and second segments of the free portion of the antenna. In the present specimen there are one pair of indistinct tubereles on the gastric region beside a median distinct spinous tubacle, carinae on the merus and carpus of cheliped are prominent, and the dactyli of ambulatory legs bear 10 or more minute denticles on the posterior border.

Range: Japan (Mutsu Bay~Kyushu)

30. ****Menaethius monoceros* (Latreille, 1825) 일각게 (신칭) (Fig. 3)

Pisa monoceros Latreille, 1825, (p. 139) (cited from Forest et Guinot, 1961).

Menaethius monoceros: H. Milne Edwards, 1834, (p. 339); Alcock, 1895, (p. 197); De Man, 1902, (p. 662); Stimpson, 1907, (p. 25, pl. 3, fig. 6 and p. 26); Montgomery, 1931, (p. 417); Sakai, 1934 (p. 294); 1938, (p. 263, pl. 26, fig. 3); 1965, (p. 74, pl. 33, fig. 4); 1976, (pp. 205-206, pl. 70, fig. 1); Stephensen, 1945, (p. 105, fig. 20A); Forest et Guinot, 1961, (p. 14, figs. 9a, b). *Menaethius subserratus* Adams & White, 1848, (pp. 18-19, pl. 4, figs. 1, 2); Dana, 1852, (p. 122, pl. 4, figs. 7a-g).

Menaethius porcellus Adams & White, 1848, (p. 18).

Menaethius tuberculatus Adams & White, 1848, (p. 19); Dana, 1852, (p. 123, pl. 5, figs. 1a-c).

Menaethius angustus Dana, 1852, (p. 120, pl. 4, figs. 5a-c).

Menaethius depressus Dana, 1852, (p. 121, pl. 4, figs. 6a-e).

Menaethius areolatus Dana, 1852, (p. 124, pl. 5, figs. 2a-c).

Menaethius inornatus Dana, 1852, (p. 125, pl. 5, figs. 3a-d, d').

Menaethius dentatus Stimpson, 1857 (not seen); 1907, (p. 25, pl. 3 fig. 6).

(See also Alcock, 1895, pp. 197-198 and Sakai, 1976, p. 205-206 for synonymy.)

Material examined: 1♀, Piyangdo, May 2, 1985, (H.S. Kim)

Measurement: length of carapace (including rostrum) 9.0mm, width of carapace 4.4mm

Remarks: This species is new to Korean waters. We examined only one relatively small female specimen. This species is distributed widely in Indo-Pacific and quite variable. We could not read original description by Latreille (1825). Many authors' descriptions

chiefly on carapace and cheliped (H. Milne Edwards, 1834 ; Adams & White, 1848 ; Dana, 1852 ; De Man, 1902) are brief, and Stephensen (1945) and Forset et Guinot (1961) figured the first pleopod of male. The following authors' descriptions are comparatively detailed. Alcock (1895) listed synonyms and mentioned about carapace, eyes, chelipeds and ambulatory legs; Stimpson (1907) described carapace and cheliped of "*Menaethius dentatus*"; Sakai (1938) did carapace (tubercles, teeth and pseudo-rostrum), eyes, antenna, external maxilliped, chelipeds and ambulatory legs.

The present specimen agrees well with Alcock's description and especially with Sakai's (1938) one. In the present specimen the pseudo-rostrum is rather short and its tip is not acute unlike the descriptions by Alcock (1895) and Adams & White (1848) but a little bifurcated as in the cases of "*Menaethius subserratus* Adams & White, 1948", and De Man's (1902) and Sakai's (1938) descriptions. Nobody described dactyli of ambulatory legs in detail. In the present specimen the dactyli bear 5 or 6 pairs of spines in two rows along posterior border.

The specimen was collected at low tide-mark of stony and weedy coast.

Range: The species ranges widely in Indo-Pacific, from Hawaii and Japan (South of Boso Province) to Red Sea and east coast of Africa.

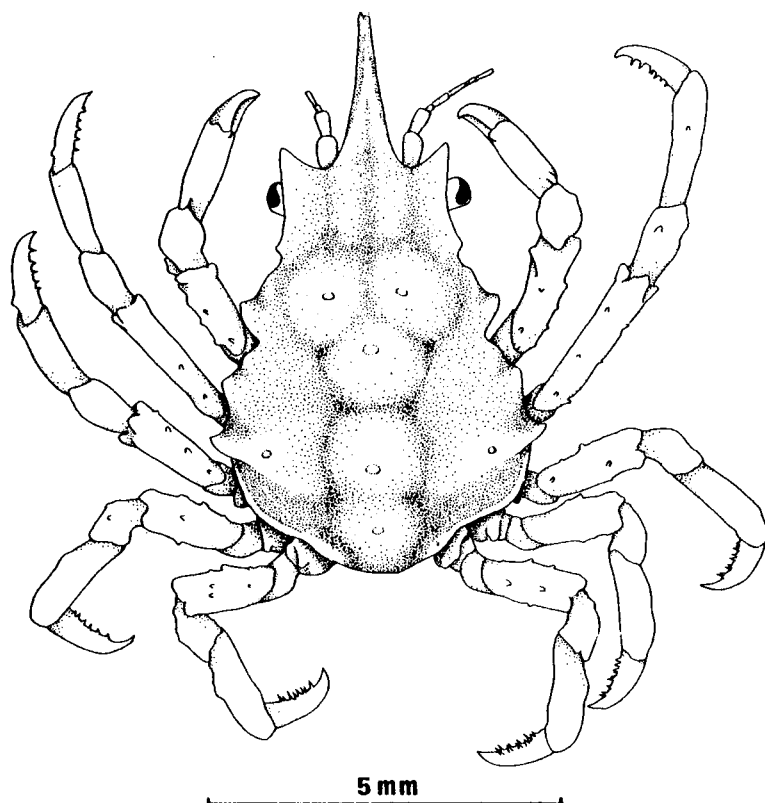


Fig. 3. *Menaethius monoceros* (Latreille, 1825), female.

31. **Huenia proteus* De Haan, 1839 외뿔게
Sögwip'o (Kim, 1973 ; Kim & Kim, 1982)
32. *Hyastenus elongatus* (Ortmann, 1893) 박뿔게
Mosulp'o (Kim, 1985) ; Sögwip'o (Kim & Kim, 1982) ; Kap'ado (Kim & Kim, 1982) ;
Hallim (Kim & Kim, 1982) ; Cheju I. (Kim, 1973)
33. **Maja spinigera* De Haan, 1839 털다리게
Sögwip'o (Kim, 1973)
34. **Maja miersi* Walker, 1890 애기털다리게
Cheju I. (Yokoya, 1933)
35. **Chlorinoides longispinus* (De Haan, 1839) 뭉툭가시뿔게
Cheju (Kim, 1985) ; Wimi (Kim & Kim, 1982) ; Sögwip'o (Kim, 1973 ; Kim & Kim,
1982 ; Kim, 1985)
Material examined : Taep'o, 1♂, Jan. 15, 1985, (H.S. Kim)
36. **Entomonys spinosus* Miers, 1884 가시뿔게
Sögwip'o (Kim, 1973 ; Kim & Kim, 1982 ; Kim, 1985)
Material examined : Sinch'ang, 2♂♂, 1♀, May 3, 1985, H.S. Kim ; Cheju, 1♂, 1♀,
Apr. 30, 1985, (H.S. Kim)
37. *Leptomithrax edwardsi* (De Haan, 1839) 두드럭게
Sögwip'o (Kamita, 1941 ; Kim, 1973 ; Kim & Kim, 1982)
Material examined : Sinch'ang, 1♀, May 3, 1985, (H.S. Kim)
38. **Leptomithrax bifidus* Ortmann, 1893 가시두드럭게
Cheju (Kim, 1973) ; Wimi (Kim & Kim, 1982) ; Sögwip'o (Kim, 1973 ; Kim & Kim,
1982 ; Kim, 1985) ; Hallim (Kim & Kim, 1982)
39. *Micippa thalia* (Herbst, 1803) 누덕웃게
Sögwip'o (Kim & Kim, 1982 ; Kim, 1985)
40. **Micippa philyra* (Herbst, 1803) 꼬마누덕웃게
Söngsanp'o (Kamita, 1941) ; Sögwip'o (Kamita, 1941)
41. **Micippa cristata granulipes* Zehntner, 1894 가시누덕웃게
Cheju I. (Sakai, 1938)
- Superfamily Hymenosomatoidea MacLeay, 1838 말랑게 상과
Family Hymenosomatidae MacLeay, 1838 말랑게 과
42. *Rhynchoplax messor* Stimpson, 1858 주걱말랑게
Söngsanp'o (Kim, 1973)
Material examined : Sögwip'o (Sammaebong), 1♂, Jan. 18, 1985, (D.H. Kwon) ; Pöph-
wan-ri, 1♂, Jan. 19, 1985, (H.S. Kim)
43. *Rhynchoplax coralicola* Rathbun, 1909 뿔말랑게
Sögwip'o (Kim & Kim, 1982) ; Hallim (Kim, 1973)
44. *Rhynchoplax setirostris* Stimpson, 1858 가는다리말랑게
Sögwip'o (Kim, 1973 ; Kim & Kim, 1982)
Material examined : Cheju, 1♀, Apr. 30, 1985, (H.S. Kim)
45. *Trigonoplax unguiformis* (De Haan, 1839) 세모게

Sögwip'o (Kim, 1985)

46. **Elamena truncata* (Stimpson, 1858) 끝은이마말랑게
Pomog-ri (Kim, 1985)

Superfamily Parthenopoidea MacLeay, 1838 자게 상과

Family Parthenopidae MacLeay, 1838 자게 과

47. *Parthenope (Platylambrus) validus* De Haan, 1839 자게
Sögwip'o (Kim, 1973) ; Cheju I. (Kim & Kim, 1982)
48. *Parthenope (Rhinolambrus) pelagicus* (Rüppel, 1830) 남방자게
Cheju I. (Kamita, 1941)
49. ****Echinoecus pentagonus* (A. Milne Edwards, 1879) 자색오각게(신칭) (Fig. 4)
Eumedon pentagonus A. Milne Edwards, 1879, (pp.104-105)(cited from Miyake, 1939, p.84)
Eumedonus pentagonus: Balls, 1922, (p.137)(cited from Sakai, 1965), Sakai, 1938(pp.349-350,
pl. 33, fig. 3).
Echinoecus pentagonus: Rathbun, 1894, (p.66, cited from Sakai, 1938), Miyake, 1939(p.84);
Sakai, 1965(p.102, pl. 46, fig. 3); 1976, (p.295, pl. 100, fig. 1).
Echinoecus rathbunae convictor: Miyake, 1939, (pp.84-88).
Echinoecus rathbunae Miyake, 1939, (p.84, figs. 1A, 2A 1-2, 3A 1-2).
Echinoecus petiti nipponicus Miyake, 1939, (p.90, text-figs. 1B, 2B 1-2, 3B 1-3).
Echinoecus kluzingeri Miyake, 1939, (pp.85, 88).
(See also Sakai, 1976, p.295 for synonymy)

Material examined : 1♀, Sögwip'o (Pömsööm), Jan. 17, 1985, (H.S. Kim)

Measurement : length of carapace (including rostrum) 7.3mm, width of carapace 7.7 mm.

Remarks : This species is new to Korean waters. The authors could not read the original description but did its important characteristics which were cited by Miyake (1939). The present specimen agrees with some of them : "carapace ornamented with regional grooves slightly", "distal margin of merus of ambulatory leg produced much above the upper margin" and "dactylus of the ambulatory legs furnished with hairs on the posterior margin." On the present specimen the carapace including rostrum shorter than broad and apex of rostrum not emarginated but entire. The specimen agrees very well with the original description of "*Echinoecus petiti nipponicus* Miyake, 1939". The characteristics of cheliped of the present specimen (fig. 1. B) agrees well with the description of "*Eumedonus pentagonus* : Sakai, 1938". The yellowish band on anterior margin and two longitudinal bands on the upper surface of posterior half of carapace seem to be much narrower than the ones illustrated by Miyake (1939, p.89, text-fig. 1. B) and Sakai (1938, pl.33, fig. 3 ; 1965, pl.46, fig. 3 ; 1976, pl.100, fig. 1).

According to Sakai (1976) this crab inhabits the shoal waters commensally attached to some sea-urchins (*Anthocidaris crassispina*, *Pseudocentrotus depressus* or *Echinothrix calamaris*). The present specimen was taken by a SCUBA diver from rocky bottom about 10m depth and the host was unknown.

Range : This species ranges widely in Indo-Pacific, from Hawaii and Japan (south of

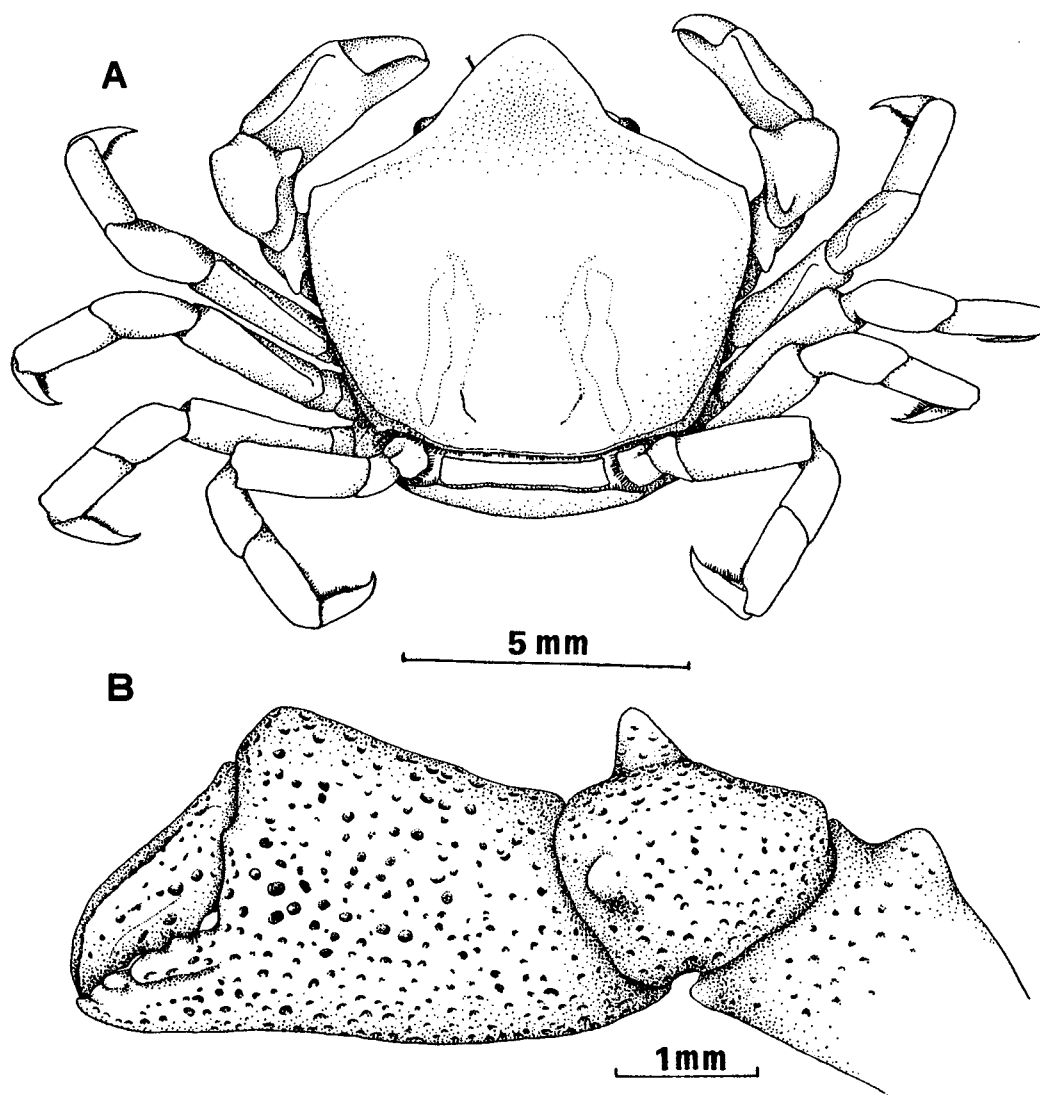


Fig. 4. *Echinoecus pentagonus* (A. Milne Edwards, 1879), A. female, B. left cheliped.

Sagami Bay) to the Red Sea and Madagascar.

Section Cancroidea Latreille, 1803 은행계 절

Superfamily Cancroidea Latreille, 1803 은행계 상과

Family Atelecyclidae Ortmann, 1893 털계 과

50. *Trachycarcinus balssi* Rathbun, 1932 뿔밤송이계

Cheju I. (Sakai, 1939)

Material examined : Cheju, 1♂, 1♀, Apr. 30, 1985, (H.S. Kim)

- Family Cancridae Latreille, 1803 은행계 과
51. **Cancer japonicus* Ortmann, 1893 은행계
Sögwip'o (Kim, 1973 ; Kim & Kim, 1982)
- Family⁴ Corystidae Samouelle, 1819 긴수염계 과
52. **Jonas distincta* (De Haan, 1835) 긴수염계
Sögwip'o (Kim, 1973)
- Section Brachyrhyncha Borradaile, 1907 방두 절
Superfamily Portunoidea Rafinesque, 1815 꽃계 상과
Family Portunidae Rafinesque, 1815 꽃계 과
53. **Carupa tenuipes* Dana, 1851 매끈꽃계
Sögwip'o (Kim, 1973)
54. *Ovalipes punctatus* (De Haan, 1833) 깨다시꽃계
Cheju (Kim & Kim, 1982) ; Sögwip'o (Kim, 1973) ; Cheju I. (Kamita, 1941)
55. ***Liocarcinus corrugatus* (Pennant, 1777) 주름꽃계
Material examined : Cheju, 1♂, 2♀♀, May 1, 1985, (H.S. Kim) ; Sögwip'o, 2♂♂, 1♀,
Jan. 19, 1985, (H.S. Kim) ; Piyangdo, 1♂, May 3, 1985, (H.S. Kim)
56. *Portunus (Portunus) sanguinolentus* (Herbst, 1796) 점박이꽃계
Cheju (Kim, 1973) ; Sögwip'o (Kamita, 1941 ; Kim, 1973)
57. *Portunus (Portunus) trituberculatus* (Miers, 1876) 꽃계
Sögwip'o (Kamita, 1941)
58. **Portunus (Portunus) pelagicus* (Linnaeus, 1766) 청색꽃계
Sögwip'o (Kamita, 1941)
Material examined : Cheju, 1♂ (young), Aug. 15, 1984, (I.H. Kim)
59. *Portunus (Monomia) gladiator* Fabricius, 1798 두드러기꽃계
Cheju (Kim & Kim, 1982 ; Kim, 1985) ; Sögwip'o (Kamita, 1941)
Material examined : Cheju, 2♂♂, 8♀♀ (1 ovi.), May 1, 1985, (H.S. Kim) ; Sögwip'o,
1♂, Jan. 19, 1985, (H.S. Kim)
60. **Portunus (Monomia) argentatus* (White, 1847) 꼬마두드러기꽃계
Sögwip'o (Kim, 1973)
61. ***Charybdis (Gonioneptunus) bimaculata* (Miers, 1886) 두점박이민꽃계
Material examined : Sögwip'o (fishmarket), 1♂, 1♀, Jan. 19, 1985, (H.S. Kim) ; Hallim,
5♂♂, 1♀ (ovi.), May 2, 1985, (H.S. Kim)
62. *Charybdis (Charybdis) japonica* (A. Milne Edwards, 1861) 민꽃계
Cheju (Kim & Kim, 1982) ; Sögwip'o (Kim, 1973) ; Hallim (Kim & Kim, 1982)
63. *Charybdis (Charybdis) acuta* (A. Milne Edwards, 1869) 홍색민꽃계
Cheju (Kim, 1973) ; Sögwip'o (Kamita, 1941 ; Kim, 1973 ; Kim & Kim 1982) ; Kapado
(Kim, 1973)
Material examined : Cheju, 2♂♂, May 1, 1985, (H.S. Kim) ; Sögwip'o, 1♂, Jan. 19, 1985,
(H.S. Kim) ; Taep'o, 2♂♂, 3♀♀, Jan. 17, 1985, (I.H. Kim) ; Piyangdo, 1♀, May,
3, 1985, (H.S. Kim)
64. **Charybdis (Charybdis) riversandersoni* Alcock, 1899 얼룩민꽃계

Sögwip'o (Kim, 1973 ; Kim & Kim, 1982)

65. **Charybdis (Charybdis) miles* De Haan, 1835 안경민꽃게

Sögwip'o (Kim, 1973)

66. *Thalamita sima* H. Milne Edwards, 1834 두갈래민꽃게

Cheju (Kamita, 1941 ; Kim, 1973 ; Kim & Kim, 1982 ; Söngsanp'o (Kim, 1973) ; Sögwip'o (Kim, 1973) ; Aewöl (Kamita, 1941)

Material examined : Cheju, 1♂, 1♀, May 1, 1985, (H.S. Kim) ; Sögwip'o, 1♂, 3♀♀, Jan. 19, 1985, (I.H. Kim) ; Kap'ado, 1♂, 1♀, Jan. 17, 1985, C.Y. Chang ; Piyangdo, 2♀♀, May 2, 1985, (H.S. Kim) ; Piyangdo, 1♂, May 3, 1985, (H.S. Kim)

67. **Thalamita prymna* (Herbst, 1803) 여섯갈래민꽃게

Sögwip'o (Kim, 1973)

Superfamily Xanthoidea MacLeay, 1838 부채계 상과

Family Goneplacidae MacLeay, 1838 원숭이게 과

68. *Carcinoplax longimana* (De Haan, 1833) 원숭이게

Sögwip'o (Kim, 1973)

Material examined : Cheju, 1♀, Apr. 30, 1985, (H.S. Kim) ; Hallim, 1♂, May 1, 1985, (C.Y. Chang) ; Hallim, 2♂♂, 1♀, May 2, 1985, (H.S. Kim)

Family Xanthidae MacLeay, 1838 부채계 과

69. *Neoliomera insularis* (White, 1847) 꼬마매끈이송편게

Sögwip'o (Kim, 1973)

- 70 **Atergatis floridus* (Linnaeus, 1767) 매끈이송편게

Sögwip'o (Kim, 1973)

71. *Atergatis reticulatus* De Haan, 1835 주름송편게

Cheju (Kim, 1973 ; Kim & Kim, 1982) ; Sögwip'o (Kim, 1973 ; Kim & Kim, 1982 ; Kim, 1985) ; Kap'ado (Kim, 1973) ; Aewöl (Kamita, 1941)

Material examined : Sögwip'o, 2♀♀, Jan. 19, 1985, (H.S. Kim) ; Kap'ado, 1♀, Jan. 17, 1985, (C.Y. Chang) ; Piyangdo, 1♂, 1♀, May 3, 1985, (H.S. Kim)

72. *Macromedaeus distinguendus* (De Haan, 1835) 꽃부채계

Söngsanp'o (Kim & Kim, 1982) ; Sögwip'o (Kim, 1985)

Material examined : Cheju, 1♀ (young), May 1, 1985, (H.S. Kim) ; Sögwip'o (Sammaebong), 1♀ (young), Jan. 18, 1985, (H.S. Kim) ; Sögwip'o (Pömsööm), 1♂, 1♀, Jan. 17, 1985, (H.S. Kim) ; Kap'ado, 3♂♂, 2♀♀, Jan. 17, 1985, (H.S. Kim) ; Mosülp'o, 1♂, 1♀ (ovi.), Aug. 24, 1982, (I.H. Kim) ; Sinch'ang, 2♂♂, May 3, 1985, (H.S. Kim) ; Piyangdo, 2♂♂, 1♀, May 2, 1985, (H.S. Kim)

73. *Leptodius exaratus* (H. Milne Edwards, 1834) 부채계

Cheju (Kamita, 1941 ; Kim, 1973) ; Udo (Kamita, 1941 ; Kim, 1973) ; Namwön (Kim, 1973) ; Sögwip'o (Kamita, 1941 ; Kim & Kim, 1982) ; Söngsanp'o (Kim & Kim, 1982) ; Sögwip'o (Kamita, 1941 ; Kim & Kim, 1982) ; Mosülp'o (Kamita, 1941 ; Kim, 1973) ; Hallim (Kamita, 1941 ; Kim, 1973) ; Aewöl (Kamita, 1941) ; Iho-ri (Kim, 1973)

Material examined : Sinch'on, 1♀, Apr. 30, 1985, (H.S. Kim) ; Söngsanp'o, 1♂, 2♀♀, Jan. 18, 1985, (H.S. Kim) ; Sögwip'o (Sammaebong), 1♀, Jan. 18, 1985, (D.H.

- Kwon); Mosŭlp'o, 1♂, Jan. 17, 1985, (C.B. Kim); Marado, 2♂♂, 2♀♀ (ovi.), Jul. 18, 1982, (S.C. Oh)
74. *Nanocassiope granulipes* (Sakai, 1939) 꼬마부채계
Sögwip'o (Kim & Kim, 1982)
75. *Cycloxanthops truncatus* (De Haan, 1837) 차양부채계
Sögwip'o (Kim & Kim, 1982)
Material examined: Sinch'ang, 3♂♂, 3♀♀, May 3, 1985, (H.S. Kim); Sögwip'o (Pömsöm), 1♂, Jan. 17, 1985, (H.S. Kim)
76. *Actaea semblastae* Guinot, 1976 음부채계
Material examined: Cheju, 1♂, May 1, 1985, (H.S. Kim); Sinch'ang, 1♀, May 24, 1985, (H.S. Kim); Sögwip'o (Pömsöm), 1♀, Jan. 17, 1985, (H.S. Kim)
Remark: This species was known as *Actaea savignyi*: Kim, 1973, (p.383); Kim and Kim, 1982, (p.151).
77. *Gaillardiellus orientalis* (Odhner, 1925) 털부채계
Söngsanp'o (Kim, 1973); Sögwip'o (Kamita, 1941; Kim, 1973; Kim & Kim, 1982); Kap'ado (Kim, 1973)
Material examined: Kap'ado, 1 ind., Jan. 17, (C.Y. Chang); Mosŭlp'o, 1♀ (ovi.), Jul. 22, 1982, (I.H. Kim)
Remark: This species was belonged previously to genus *Actaea*, and then Guinot(1976) recombined it with *Gaillardiellus*.
78. *Banareia subglobosa* (Stimpson, 1858) 반구부채계
Sögwip'o (Kim, 1973; Kim & Kim, 1982)
Remark: This species was belonged previously to genus *Actaea*.
79. *Hypothalassia armata* (De Haan, 1835) 왕부채계
Sögwip'o (Kamita, 1941; Kim, 1973); Marado (Kamita, 1941)
80. *Pilumnus longicornis* Hilgendorf, 1878 긴다리털보부채계
Sögwip'o (Kim, 1973)
81. *Pilumnus minutus* De Haan, 1835 애기털보부채계
Cheju (Kamita, 1941); Udo (Kim & Kim, 1982)
Material examined: Söngsanp'o, 1♂, 1♀, Jan. 18, 1985, (H.S. Kim); Sögwip'o, 1♂, 1♀, Aug. 20, 1982, (I.H. Kim)
82. *Heteropilumnus ciliatus* (Stimpson, 1858) 털보부채계
Cheju (Kamita, 1941)
Material examined: Sinch'ang, 1♂, May 3, 1985, (H.S. Kim)
83. *Actumnus marissinicus* Takeda & Kim, 1977 풍알부채계
Sögwip'o (Kim, 1973; Takeda & Kim, 1977)
Material examined: Mosŭlp'o, 1♀, Jul. 22, 1985, (I.H. Kim)
Remark: This species was known as *Actumnus asper*: Kim, 1973, (p.398).
84. *Pilumnopeus indicus* (De Man, 1887) 네톱니부채계
Cheju (Kamita, 1941); Söngsanp'o (Kim, 1973); Udo (Kim, 1973; Kim & Kim, 1982); Sögwip'o (Kim, 1973; Kim & Kim, 1982); Hallim (Kim, 1973)
Material examined: Pöphwan-ri, 2♂♂, 2♀♀, Jan. 19, 1985, (H.S. Kim); Piyangdo,

2♂♂, 1♀, May 2, 1985, (H.S. Kim)

85. *Pilumnopus makianus* (Rathbun, 1929) 두드리기네톱니부채계
Cheju (Kim & Kim, 1982)

Material examined: Söngsanp'o, 1♀, Jan. 18, 1985, (H.S. Kim)

86. **Parapilumnus trispinosus* Sakai, 1965 새가시부채계
Söngsanp'o (Kim, 1985); Sögwip'o (Kim & Kim, 1982)

Superfamily Grapsidoidea MacLeay, 1838 바위계 상과

Family Grapsidae MacLeay, 1838 바위계 과

87. *Pachygrapsus crassipes* Randall, 1839 바위계

Cheju (Kim, 1973); Söngsanp'o (Kamita, 1941; Kim, 1973; Kim & Kim, 1982); Namwön (Kim, 1973); Pomog-ri (Kim, 1985); Sögwip'o (Kamita, 1941; Mosülp'o (Kamita, 1941; Kim, 1973); Hyöpchae (Kamita, 1941); Hallim (Kim & Kim, 1982); Iho-ri (Kim, 1973)

Material examined: Taep'o, 1♀, Jan. 15, 1985, (H.S. Kim); Marado, 1♀, Jan. 18, 1982, (S.C. Oh); Piyangdo, 1♀, May 2, 1985, (H.S. Kim)

88. *Acmaeopleura parvula* Stimpson, 1858 애기비단게

Cheju (Kamita, 1941; Kim, 1973); Söngsanp'o (Kim & Kim, 1982); Sögwip'o (Kamita, 1941; Kim & Kim, 1982); Aewöl (Kamita, 1941); Iho-ri (Kim, 1973); Chwa-myön (Kamita, 1941)

Material examined: Sögwip'o, 3♂♂, 8♀♀ (3 ovi.), Jan. 15, 1985, (C.Y. Chang); Mosülp'o, 5♂♂, 9♀♀ (1 voi.), Jan. 17, 1985, (C.B. Kim); Marado, 3♂♂, 2♀♀ (2 ovi.), Jul. 18, 1982, (S.C. Oh); Piyangdo, 4♂♂, 4♀♀ (3 ovi.), May 2, 1985, (H.S. Kim)

89. *Eriocheir japonicus* De Haan, 1835 동남참게

Cheju (Kamita, 1941, Kim, 1973); Chungmun (Kamita, 1941)

90. *Hemigrapsus sanguineus* (De Haan, 1835) 무늬발게

Cheju (Kamita, 1941; Kim, 1973); Söngsanp'o (Kamita, 1941; Kim, 1973; Kim & Kim, 1982) P'yosön (Kamita, 1941; Kim, 1973); Namwön (Kim, 1973); Sögwip'o (Kamita, 1941; Kim & Kim, 1982); Mosülp'o (Kamita, 1941); Kümring (Kim & Kim, 1982); Kap'ado (Kim, 1973); Iho-ri (Kim, 1973)

Material examined: Sinch'on, 1♂, Apr. 30, 1985 (C.Y. Chang); Sehwa, 1♂, May 4, 1985, (C.Y. Chang); Söngsanp'o, 3♂♂, 2♀♀, Jan. 18, 1985, (H.S. Kim); Sögwip'o, 4♂♂, Jan. 15, 1985, (C.B. Kim); Kangjǒng, 1♂, Jan. 15, 1985, (C.Y. Chang); Mosülp'o, 4♂♂, 1♀, Jan. 17, 1985, (H.S. Kim); Piyangdo, 1♂, 3♀♀, May 2, 1985, (H.S. Kim)

91. *Hemigrapsus penicillatus* (De Haan, 1835) 풀게

Cheju (Kamita, 1941; Kim & Kim, 1982); Samyang (Kim, 1973); Söngsanp'o (Kamita, 1941; Kim, 1973); Kim & Kim, 1982); P'yosön (Kamita, 1941); Namwön (Kim, 1973); Sögwip'o (Kamita, 1941; Kim, 1973; Kim & Kim, 1982); Kap'ado (Kim, 1973); Mosülp'o (Kamita, 1941; Kim, 1973); Kümring (Kim & Kim, 1982); Iho-ri (Kim, 1973)

Material examined : Sinch'on, 2♂♂, 3♀♀, Apr. 30, 1985, (C.Y. Chang) ; Sehwa, 1♂, May 4, 1985, (C.Y. Chang) ; Söngsanp'o, 1♂, 1♀, Jan. 18, 1985, (C.B. Kim) ; Sögwip'o, 1♂, Jan. 15, 1985, (H.S. Kim) ; Kangjöng, 4♂♂, 13♀♀, Jan. 15, 1985, (H.S. Kim) ; Kap'ado, 1♀, Jan. 17, 1985, (H.S. Kim) ; Mosülp'o, 1♀, Jan. 17, 1985, (C.Y. Chang) ; Hallim, 1♂, 1♀, May 1, 1985, (H.S. Kim)

92. *Gaetice depressus* (De Haan, 1835) 납작게

Cheju (Kamita, 1941 ; Kim, 1973) ; Söngsanp'o (Kamita, 1941 ; Kim, 1973) ; P'yosön (Kim, 1973) ; Namwön (Kim, 1973) ; Sögwip'o (Kamita, 1941 ; Kim, 1973 ; Kim & Kim, 1982 ; Kim, 1982 ; Kim, 1985) ; Kap'ado (Kim, 1973) ; Mosülp'o (Kamita, 1941 ; Kim, 1973) ; Kümring (Kim & Kim, 1982) ; P'yosön (Kim, 1973) ; Hyöpchae (Kim & Kim, 1982) ; Hallim (Kim & Kim, 1982) ; Iho-ri (Kim, 1973)

Material examined : Sinch'on, 2♂♂, Apr. 30, 1985, (H.S. Kim) ; Sehwa, 2♀♀ (1 ovi.), May 4, 1985, (C.Y. Chang) ; Söngsanp'o, 9♂♂, 1♀, Jan. 18, 1985, (H.S. Kim) ; Sögwip'o 8♂♂, 3♀♀, Jan. 15, 1985, (H.S. Kim) ; Kap'ado, 1♂, Jan. 17, 1985, (C.Y. Chang) ; Mosülp'o, 2♂♂, 1♀, Jan. 17, 1985, (C.Y. Chang) ; Piyangdo, 2♂♂, 4♀♀, May 2, 1985, (H.S. Kim) ; Hallim, 1♀, May 1, 1985, (C.Y. Chang)

93. *Sesarma (Parasesarma) pictum* (De Haan, 1835) 사각게

Cheju (Kaita, 1941 ; Kim, 1973) ; Udo (Kamita, 1941 ; Kim, 1973) ; Söngsanp'o (Kamita, 1941 ; Kim, 1973 ; Kim & Kim, 1982) ; P'yosön (Kamita, 1941) ; Namwön (Kim, 1973) ; Pomog-ri (Kim, 1985) ; Sögwip'o (Kamita, 1941 ; Kim, 1973 ; Kim & Kim, 1982) ; Kap'ado (Kim, 1973) ; Mosülp'o (Kamita, 1941 ; Kim, 1973) ; Kümring (Kim & Kim, 1982) ; Aewöl (Kamita, 1941) ; Iho-ri (Kim, 1973)

Material examined : Sinch'on, 1♂, 1♀, Apr. 30, 1985, (H.S. Kim) ; Pöphwan, 9♂♂, 11♀♀, Jan. 19, 1985, (H.S. Kim) ; Mosülp'o, 1♂, Aug. 23, 1985, (I.H. Kim) ; Piyangdo, 1♀, May 2, 1985, (C.Y. Chang)

94. *Sesarma (Holometopus) haematocheir* (De Haan, 1833) 도둑게

P'yosön (Kamita, 1941) ; Namwön (Kim, 1973) ; Sögwip'o (Kim, 1973) ; Mosülp'o (Kamita, 1941) ; Iho-ri (Kim, 1973)

Material examined : Mosülp'o, 1♀ (ovi.), Aug. 23, 1982, (I.H. Kim)

95. *Sesarma (Holometopus) dehaani* H. Milne Edwards, 1853 말뚱게

Cheju (Kamita, 1941) ; P'yosön (Kamita, 1941) ; Pomog-ri (Kim, 1985) ; Sögwip'o (Kamita, 1941 ; Kim, 1973 ; Kim & Kim, 1982) ; Mosülp'o (Kamita, 1941) ; Iho-ri (Kim, 1973) ; Sinu-myön (Kamita, 1941) ; Kuu-myön (Kamita, 1941)

96. **Sesarma (Chiromantes) bidens* (De Haan, 1835) 두이빨사각게

Aewöl (Kamita, 1941)

97. *Cyclograpsus intermedius* Ortmann, 1894 비단게

Cheju (Kamita, 1941 ; Kim, 1973) ; Udo (Kamita, 1941) ; P'yosön (Kamita, 1941) ; Sögwip'o (Kim, 1985) ; Kap'ado (Kim, 1973)

98. *Chasmagnathus convexus* De Haan, 1835 갯게

Cheju (Kamita, 1941) ; Aewöl (Kamita, 1941)

99. *Helice tridens* De Haan, 1835 방게

Cheju (Kamita, 1941) ; Söngsanp'o (Kamita, 1941) ; P'yosön (Kamita, 1941) ; Namwön

(Kim, 1973) ; Pomog-ri (Kim, 1985) ; Sögwip'o (Kim & Kim, 1982 ; Kim, 1985) ; Kap'ado (Kim, 1973) ; Mosulp'o (Kamita, 1941) ; Iho-ri (Kim, 1973).

Material examined : Pophwan, 5♂♂, 3♀♀, Jan. 19, 1985, (H.S. Kim).

100. *Plagusia dentipes* De Haan, 1835 톱장절계

Söngsanp'o (Kim, 1973) ; Sögwip'o (Kamita, 1941) ; Kap'ado (Kim, 1973).

Material examined : Sögwip'o (fish market), 1♂, Jan. 19, 1985, (H.S. Kim) ; Sögwip'o (Sammaebong), 1♀, Jan. 18, 1985, (H.S. Kim)

Superfamily Ocypodoidea Rafinesque, 1815 달랑계 상과

Family Ocypodidae Rafinesque, 1815 달랑계 과

101. *Ocypode stimpsoni* Ortmann, 1897 달랑계

Söngsanp'o (Kamita, 1941) ; P'yosön (Kamita, 1941 ; Kim, 1973) ; Hyöpchae (Kamita, 1941) ; Iho-ri (Kim, 1973)

102. *Scopimera globosa* De Haan, 1835 엽낭계

Cheju (Kim, 1973) ; Udo (Kamita, 1941) ; Söngsanp'o (Kamita, 1941 ; Kim, 1973 ; Kim & Kim, 1982) ; P'yosön (Kamita, 1941 ; Kim, 1973) ; Sögwip'o (Kamita, 1941 ; Kim, 1973) ; Mosulp'o (Kamita, 1941 ; Kim, 1973) ; Kümrüng (Kim & Kim, 1982).

Material examined : Samyang, 7♂♂, 3♀♀, Apr. 30, 1985, (H.S. Kim)

103. *Macrophtalmus (Macrophtalmus) dilatatus* (De Haan, 1835) 길계

Söngsanp'o (Kim, 1973 ; Kim & Kim, 1982).

104. *Macrophtalmus (Mareotis) japonicus* De Haan, 1835 칠계

P'yosön (Kamita, 1941) ; Namwön (Kim, 1973) ; Sögwip'o (Kamita, 1941 ; Kim, 1973) ; Kap'ado (Kim, 1973) ; Mosulp'o (Kamita, 1941 ; Kim, 1973).

DISCUSSION

The total number of identified crab species collected from Cheju Island waters chiefly during the period from January, 1985 to May, 1985 are 42 species. Of these, 5 species [*Achaeus tuberculatus* and *Oregonia gracilis* of Majidae, *Liocarcinus corrugatus* and *Charybdis (Gonioneptunus) bimaculata* of Portunidae, and *Actaea semblatae* of Xanthidae] are newly recorded from Cheju Island waters, 3 species (*Pugettia minor* and *Menaethius monoceros* of Majidae, and *Echinoecus pentagonus* of Parthenopidae) are new to Korean waters including Cheju I., and the remaining 34 species have been known from the island.

In addition to these 42 species there are also 62 species that have been known from the island. The total number of 104 crab species of Cheju I. are distributed among 6 sections and 16 families. The number occupies 56.8% of the total 183 species known from Korean waters up to the present, and 41 species (39.4% of the 104 species) were found only from Cheju I. and its adjacent waters in Korea. The 104 species consist of two species (1.9%) of northern form, 40 (38.5%) of temperate zone form and 62 (61.5%) of southern form. Thus Cheju Island has relatively high number of its own local crab species and southern form species in comparison with those of other three regions (the Sea of Japan, the Yellow Sea and the Korea Strait). The abundance of southern form in the island is quite reasonable

because the island is washed by the warm Tsuchima Current, a branch of the warm Kur-oshio Current.

SUMMARY

A taxonomic work for clarifying the brachyuran fauna of Cheju Island was made. The authors prepared a checklist of crabs of Cheju Island based upon the literature records and specimens collected chiefly during the period from January, 1985 to May, 1985. The specimens were identified into 42 species, of which 5 species are newly recorded from Cheju Island waters, 3 species (*Pugettia minor* and *Menaethius monoceros* of Majidae, and *Echinoecus pentagonus* of Parthenopidae) are new to Korean waters and described with figures, and the remaining 34 species have been known from the island.

The total number of 104 crab species of Cheju I. (the above 42 species and 62 species which appear only in literatures) are distributed among 6 sections and 16 families. The 104 crab species of the island occupy 56.8% of the total 183 species of known Korean crabs. Of the 104 species, 41 species (39.4%) were found only from Cheju I. in Korea and 62 species (61.5%) are southern (warm water) form.

ACKNOWLEDGEMENT

It must be noticed here that drawings (except the 1st pleopod of *Pugettia minor*) are made by Dr. I. H. Kim of Kangreung National University, and the authors are deeply grateful to him.

REFERENCES

- Adams, A. and A. White, 1848. Crustacea. In: A. Adams, The Zoology of the Voyage of H.M.S. Samarang, 1843-1846, London, pp. I-VIII, 1-66, pls. 1-13.
- Alcock, A. 1895. Materials for a carcinological fauna of India. no. 1. The Brachyura Oxyrhyncha. J. Asiatic Soc. Bengal, vol. 64, pt. 2, no. 2, Calcutta: 157-291, pls. 3-5.
- Balss, H., 1924. Ostasiatische Decapoden. Arch. F. Naturg. Bd. 88,90. V. Die Oxyrhynchen und Schlussteil: 20-84, pl. 1.
- Bowman, T.E. and L.G. Abele, 1982. Classification of the recent Crustacea. In: The biology of Crustacea, vol. 1, Systematics, the fossil record, and biogeography, edited by L.G. Abele, Academic Press, pp. 1-27.
- Choe, B.L. and D.H. Kwon, 1982. The marine invertebrate fauna from Deogjeog Islands. Report on the Survey of Natural Environment in Korea, no. 1: 251-266.
- Dana, J.D. 1852. Crustacea. United States Exploring Expedition during the years 1838, 1839, 1840, 1841, 1842, under the command of Charles Wilkes, U.S.N., vol. 13, pt. 1: i-viii, 1-685.
- Doflein, F. 1902. Ostasiatische Dekapoden. Abh. Bayer. Akad. Wiss. II. Cl., 21, pt. 3, pp. 611-670, pls. 1-6.

- Forest, J. et Guinot, D. 1961. Crustacés Décapodes Brachyours de Tahiti et des Tuamotu. Expéd. Française sur les Récifs Coralliens de la Nouvelle-Calédonie. pp.1-187, text-figs. 1-178, pls. 1-18.
- Gordon, I., 1931. Brachyura from the coasts of China. J. Linn. Soc. London, Zool., 37, 254: 525-558, text-figs. 1-36.
- Guinot, D., 1976. Constitution de quelques groupes naturels chez les Crustacés Décapodes Brachyours 1. La superfamille des Belloioidea et trois sous-familles de Xanthidae (Polydectinae Dana, Trichiinae de Haan, Actaeinae Alcock). Mem. Mus. Hist. Nat. Paris, Sér. A, Zool., 97:1-308, figs. 1-47, pls. 1-19.
- Kamita, T. 1941. Studies of the decapod crustaceans of Chosen. pt. 1. Crabs. The Fisheries Society of Chosen, Keijo, pp.1-289, text-figs. 1-146, 1 map. (In Japanese)
- Kim, H.S., 1973. Illustrated encyclopedia of fauna & flora of Korea, vol. 14, Anomura & Brachyura. Samhwa Publishing Co., pp.694, text-figs. 1-264, pls. 1-112. (In Korean, with English catalogue)
- Kim, H.S., 1973a. Report on a collection of animals from Baegryeong I. and Daechong I. College Review, published by College of Liberal Arts and Sciences, SNU, 19, 1/2: 427-236. (In Korean)
- Kim, H.S., 1985. Systematic studies on crustaceans of Korea. 1. Decapods. Proc. Coll. Natur. Sci., SNU, 10, 1: 63-94. (In Korean)
- Kim, H.S. and B.L. Choe, 1981. The fauna of marine invertebrates in Ulreung Is. and Dogdo Is. Rep. KACN, 19: 193-200. (In Korean)
- Kim, H.S. and D.H. Kwon, 1982. Marine invertebrate fauna in the vicinity of Wando Island. Report on the Survey of Natural Environment in Korea, no. 2. The Islands adjacent to Wando, : 187-206. (In Korean)
- Kim, H.S., K.S. Lee, 1978. Report on a collection of marine animals from Donggyeogryeolbi I., Seogdo I. and Gungsi I. Rep. KACN, 12: 97-101. (In Korean)
- Kim, H.S., K.S. Lee and I.H. Kim, 1979. A faunal and ecological study on the crustaceans in the lower reaches of the Nagdong River where migratory birds come flying. Bull. KACN, 1: 287-325. (In Korean)
- Kim, H.S., I.K. Lee, C.H. Koh, I.H. Kim, Y.B. Suh and N. Sung, 1983. Studies on the marine benthic communities in inter and subtidal zones. I. Analysis of benthic community structure at Aninjin, east coast of Korea. Proc. Coll. Natur. Sci., SNU. 8,1: 71-108. (In Korean)
- Kim, H.S., K.S. Lee, W. Kim and D.H. Kwon, 1981. A faunal and ecological study on the crustaceans in the intertidal zones near Incheon and southern part of Ganghwa Island. Bull. KACN. 3: 279-309. (In Korean)
- Kim, H.S. and B.J. Rho, 1971. On the distribution of the benthic animals of Korean coastal seas. 1. Jeju Island region. Report for IBP, no.5, Korean National Committee for the IBP : 7-27.
- Kim, H.S., B.J. Rho, S.Y. Hong, I.H. Kim, S. Shin. and C.H. Han, 1979. The marine invertebrate fauna in the southern part of Geoje Island and it's adjacent five islands, Rep. KACN, 14: 103-126. (In Korean)
- Kim, H.S. and T. Sakai, 1972. A new pinnotherid crab of the genus *Sakaina*(decapod crustaceans) from Korea. Proc. Jap. Soc. Syst. Zool., 8: 29-31.
- Kim, W. and H.S. Kim, 1982. Classification and geographical distribution of Korean crabs(Crustacea, Decapoda, Brachyura). Proc. Coll. Natur. Sci. SNU. 7,1 : 133-159.
- Lee, I.K., H.S. Kim, C.H. Koh, J.W. Kang, S.Y. Hong, S.M. Boo, I.H. Kim and Y.C. Kang, 1984.

- Studies on the marine benthic communities in inter and subtidal zones II. Qualitative and quantitative analysis of the community structure in south-eastern coast of Korea. Proc. Coll. Natur. Sci., SNU, 9, 1: 71-126. (In Korean)
- Man, J.G. De, 1902. Die von Herrn Professor Kükenthal im Indischen Archipel gesammelten Decapoden und Stomatopoden. In: W. Kükenthal, Ergebnisse einer zoologischen Forschungsreise in den Molukken und Borneo. Abhandlungen Senckenbergischen Naturforschenden Gesellschaft, Frankfurt a. M., 25: 467-929, pls. 19-27.
- Milne Edwards, H., 1834. Histoire Naturelle des Crustacés, Paris, 1: 1-468.
- Miyake, S., 1939. Note on crabs of the genus *Echinoecus* Rathbun living commensally with echinoids (Parthenopidae, Eumedoninae). Ann. Zool. Japan, 18: 83-94.
- Miyake, S., 1983. Japanese crustacean decapods and stomatopods in color, vol. II. Hoikusha Publishing Co., LTD. Japan, pp. 277, pls. 1-64. (In Japanese)
- Montgomery, S.K., 1931. Report on the Crustacea Brachyura of the Percy Sladen Trust Expedition to the Abrolhos Islands under the Leadership of Professor W.J. Dakin, in 1913; along with other crabs from Western Australia. J. Linn. Soc., London, Zool., 37: 405-465, 1 fig., pls. 24-30.
- Ortmann, A., 1893. Die Decapoden-Krebse des Strassburger Museums, V. Theil. Abtheilung: Brachyura (Brachyura genuina Boas) 1. Unterabtheilung: Majoidea und Concroidea, I. Section Portuninea. Zool. Jahrb. Jena, Syst., Bd. 7: 23-88, pl. 3.
- Sakai, T., 1934. Brachyura from the coast of Kyushu, Japan, Sci. Rep. Tokyo Bunrika Daigaku, sect. B. 1, 25: 281-330.
- Sakai, T., 1937. Studies on the crabs of Japan. II. Oxystomata. Sci. Rep. Tokyo Bunrika Daigaku, vol. 3, suppl. 2: 67-192, pls. 10-19.
- Sakai, T., 1938. Studies on the crabs of Japan. III. Brachygnatha, Oxyrhyncha. Yokendo, Tokyo, pp. 193-364, text-figs. 1-55, pls. 20-41.
- Sakai, T., 1939. Studies on the crabs of Japan. IV. Brachygnatha, Brachyrhyncha. Yokendo, Tokyo: 365-741, pls. 42-111.
- Sakai, T., 1965. The Crabs of Sagami Bay, collected by His Majesty the Emperor of Japan, edited by Biological Laboratory, imperial Household, Tokyo. pp. 1-206, pls. 1-100 (coloured), text-figs. 1-27.
- Sakai, T., 1976. Crabs of Japan and the adjacent seas. Kodansha. LTD., Japan, pp. 773, pls. 1-251.
- Stephensen, K., 1945. The Brachyura of the Iranian Gulf. With an Appendix: The male pleopoda of the Brachyura. In: Danish scientific Investigations in Iran, part IV. Copenhagen: E. Munksgaard: 57-237, figs. 1-60.
- Stimpson, W., 1907. Report on the Crustacea (Brachyura and Anomura) collected by the North Pacific Exploring Expedition, 1853-1856. Smithsonian. Miscell. Coll., 49, 1717: 1-240, pls. 1-26.
- Takeda, M. and H.S. Kim, 1977. A new Actumnus (Crustacea: Decapoda: Brachyura) from Jeju Island, Korean J., Zool., 20, 3: 135-139.
- Takeda, M. and Miyake, S. 1969. Crabs from the East China Sea. III. Brachygnatha Oxyrhyncha. J. Fac. Agric., Kyushu Univ., 15, 4: 469-521, pls. 17-18, text-figs. 1-12.
- Yokoya, Y. 1933. On the distribution of decapod crustaceans inhabiting the continental shelf around Japan, based upon the materials collected by S.S. Soyo-Maru, during the years 1923-1930: J. Coll. Agricult., Tokyo Imp. Univ., 12, 1: 1-226, text-figs. 1-71.

RECEIVED: 24 SEPTEMBER, 1985.

ACCEPTED: 19 OCTOBER, 1985.