

상악 시적의치의 후연 연장방법이 Resin 의치상의 변형에 미치는 영향에 관한 실험적 연구

고려대학교 보건전문대학

ABSTRACT

A Study on the Effect of the Wax Extension Method of Posterior Palatal Seal on the Vertical Occlusal Change of Processed Dentures

Sea Yoon Oh

*Dept of Dental Technology, Junior College of Public Health and Medical Technology,
Korea University, Seoul, Korea*

This experimental study was performed to investigate the effect of the wax extension method of posterior palatal seal area, introduced by Vig, on the amount of the vertical occlusal change of processed dentures.

Twenty samples of maxillary wax trial dentures were constructed. Among them, the posterior palatal seal of ten samples were extended with wax over the posterior wall of the cast while that of the other ten were not. Then all were processed with self-curing resin and the amount of the vertical occlusal change was compared.

The obtained result was that this method was proved to be effective in reducing the amount of the vertical occlusal change occurring in denture processing.

1. 서론

Anthony Peyton

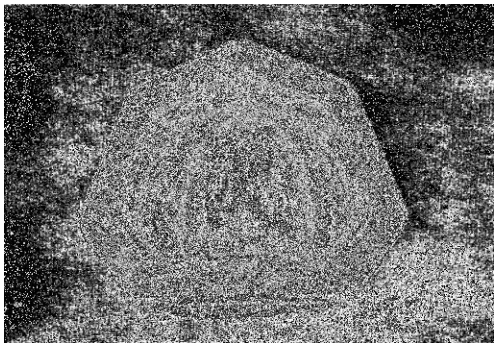
resin

resin

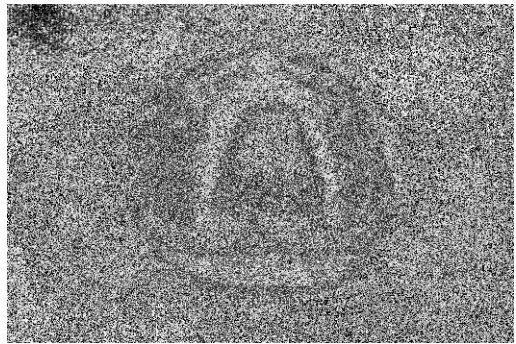
Vig

II. 실험재료 및 방법

가 가 가
 flange 가 resin
 resin 가 resin
 가 resin
 Skinner Vig
 Vig
 resin wax
 silicone rubber mold
 (2), resin
 mold wax 20
 Columbia dentiform (20
 Silicone rubber mold(# 402) 1



1. Columbia dentiform rubber mold(# 402)



2. silicone rubber mold

(3). remounting index
 20 10
 baseplate wax dsu
 1 :
 2 : 10
 (4) :
 10
 resin

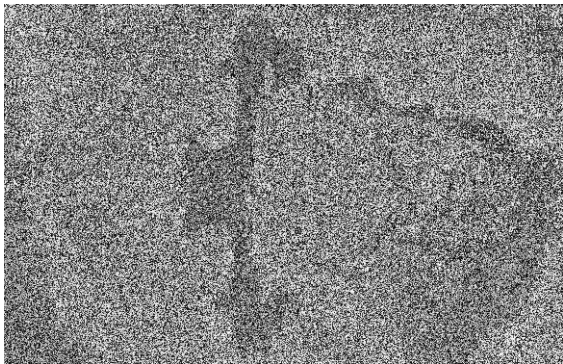
index member plane guide
 20 wax boxing
 occlusal lower jaw occlusal

가 resin resin deflasking
 remounting index resin
 .(8)
 resin
 3

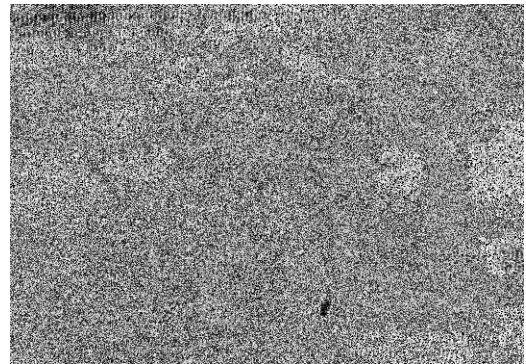
occlusal index
 upper jaw member
 caliper .(

6)
 3 Resin
 resin
 .(7) wax boxing

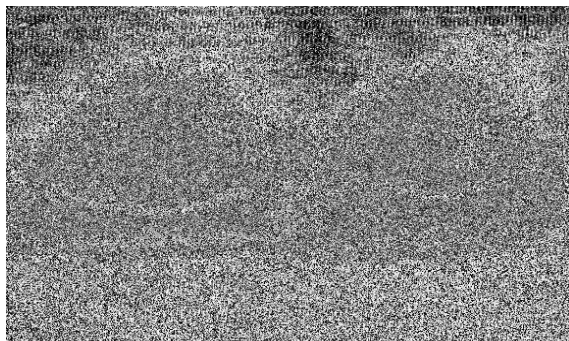
III. 실험성적



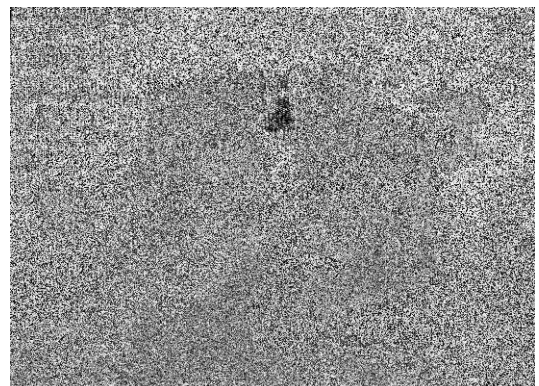
3. remounting index



5. Occlusal index mounting



4. (: 1 , : 2)



6. mounting

Table

1

0.530(mm)

2

0.265(mm)

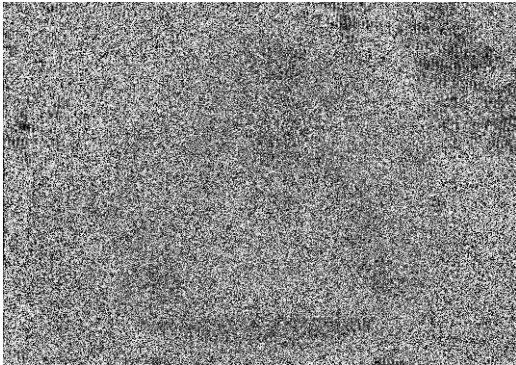
2

.(Table ,)

table

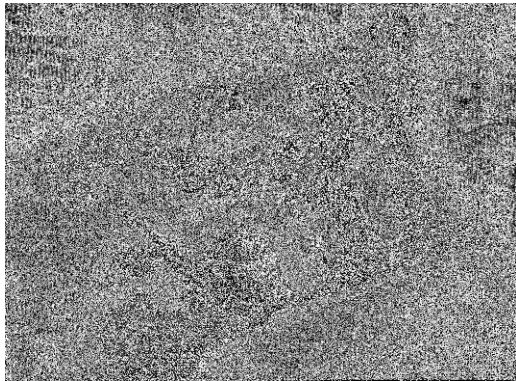
가

IV. 총괄 및 결론



7.

wax



8.

resin

remounting

Table

1

표본번호	교합고경 증가량
1	0.60
2	0.70
3	0.45
4	0.50
5	0.30
6	0.65
7	0.50
8	0.60
9	0.45
10	0.60
평균증가량	0.530

Table

2

표본번호	교합고경 증가량
1	0.25
2	0.50
3	0.30
4	0.35
5	0.15
6	0.20
7	0.25
8	0.25
9	0.20
10	0.20
평균증가량	0.265

Table

방법	표본수	평균변화량	표준편차
시적의치의 후연을 연장하지 않은 경우	10	0.530	0.123
시적의치의 후연을 연장한 경우	10	0.265	0.075

t = 2.10

p < 0.05

참고문헌

1. Skinner, R.W., and Cooper, R.W.: Physical properties of denture resins. Part I: Curing, shrinkage, and water sorption. J. Am. Dent. Assoc. 30: 1845, 1943.
2. Pickett, H.G., and Appleby, R.C.: Comparison of Six Acrylic Resin Processing Techniques, J. Am. Dent. Assoc. 80: 1309-1314, 1970.
3. Mirza, F.D.: Dimensional Stability of Acrylic Resin Dentures, J. Prosthet. Dent. 11: 848-857, 1961.
4. Goodkind, R.J., and Schulte, R.C.: Dimensional Accuracy of Pour Acrylic Resin and Conventional Processing of Cold-Curing Acrylic Resin Bases, J. Prosthet. Dent. 24: 662-668, 1970.
5. Anthony, D.H., and Peyton, F.A.: Dimensional accuracy of various base materials. J. Prosthet. Dent. 12: 67-81, 1962.
6. Peyton, F.A., and Anthony, D.H.: Evaluation of Dentures Processed by Different Techniques, J. Prosthet. Dent. 13: 269-282, 1963.
7. Vig. R.G.: Method of reducing the shifting of teeth in denture processing, J. Prosthet. Dent. 33: 80-84, 1975.
8. Phillips, R.W.: Skinner's Science of Dental Materials, ed 7. Philadelphia, 1973, W.B. Saunders, p.199-203.
9. Becker, C.M., Smith, D.L., and Nicholls, J. I.: The comparison of denture - base processing techniques. Part 1: Material characteristics, J. Prosthet. Dent. 37: 331-338, 1977.
10. Becker, C.M., Smith, D.L., and Nicholls, J.L.: The comparison of denture - base processing techniques. Part II: Dimensional changes due to processing, J. Prosthet. Dent. 37: 450-459, 1977.
11. Glazier, S., Firtell. D.N., and Harman, L.L.: Posterior peripheral seal distortion related to height of the maxillary ridge, J. Prosthet. Dent. 43: 508-510, 1980.
12. Marcroft, K.R., Tenscate, R.L., and Hurst, W.W.:

가

- Use of a Layered Silicone Rubber Mold Technique for Denture Processing, *J. Prosthet. Dent.* 11: 657-664, 1961.
13. Woelfel, J.B., Paffenbarger, G.C., and Sweeney, W.T.: Dimensional changes occurring in during processing. *J. Am. Dent. Assoc.* 61: 413, 1960.
 14. Mowery, W.E., Burns, C.L., Dickson, G., and Sweeney, W.T.: Dimensional stability of denture base resins, *J. Am. Dent. Assoc.* 57: 345-353, 1958.