

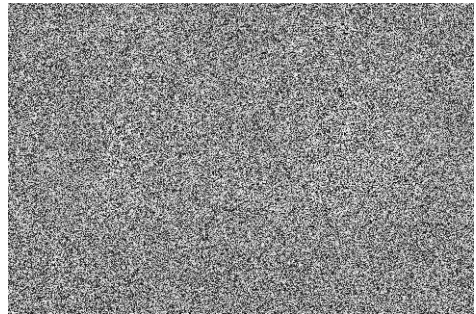
가철식 구부의치 제작시 개량된 매몰방법에 대하여

바른손 치과기공소

modified flasking technique for removable partial dentures

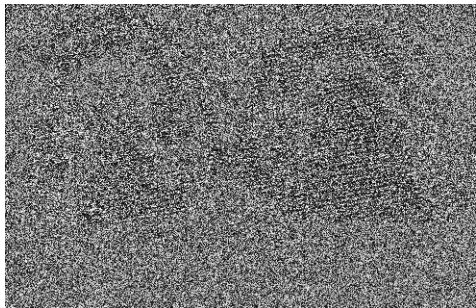
I. 서론

가철식 구부의치 (removable partial denture) 제작시 (flasking), (wax-wash) (packing), (curing) (deflasking) 과정에 (metal framework) (potentially damaging stress) 가 (removable partial denture framework) 가 (damaging stress) 가 (plaster) (metal framework) (partial denture) 가 (artificial stone teeth) (2).



1.

가



2.

(stone teeth)

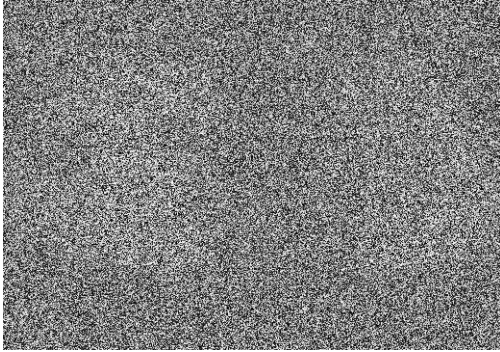
II. 본론

기술(Technique)

1. (flasking) (1).
2. undercut (sharp knife) 가

3. (framework) 가
(framework) (paster) .

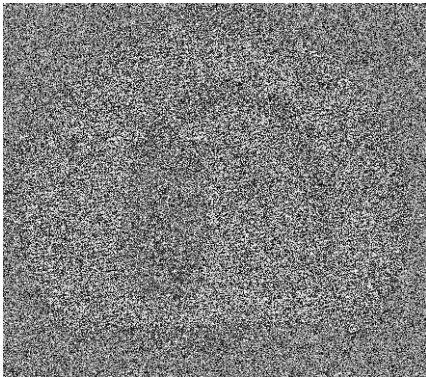
3). (



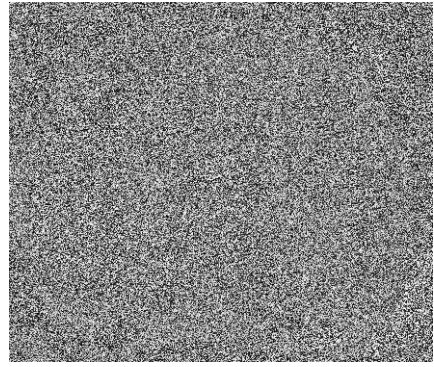
3. (framework)

4. petroleum Jelly (vaseline)
가

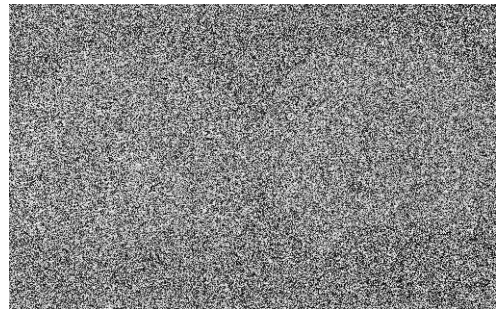
5. (flasking) (boil-
out) (pack), (cure)
(4~6).



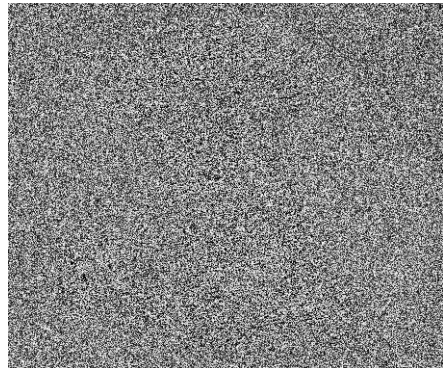
4. (maxillary flask)



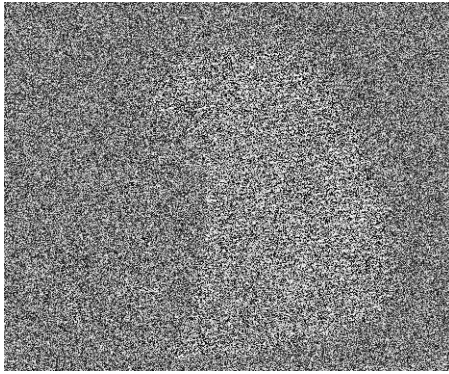
5. (mandibular)



6. 가 resin wax



7. 가



8. 가

부수적인 기술 Alternate Technique

(vaseline)

(milling-in)

III. 결 론

가

(metal framework) 가

6. (master cast)

(cured denture) (deflasking) (7~8)

7. (plaster)