

**A New Species of the Genus *Tetragnatha*
(Araneae:Tetragnathidae) from Korea.**

Bo Keun Seo and Kap Yong Paik*

(Department of Biology, Gyeongsang National University,
Department of Biology, Kyungpook National University*)

韓國產 *Tetragnatha*屬의 1新種

徐 普 根·白 甲 鏞*

(慶尙大學校 生物科·慶北大學校 生物科*)

(Received April 7, 1981)

摘 要

著者들은 慶北大學校 師範大學 生物學科 動物分類學教室에 所藏된 標本 數
個體와 著者の 1人인 徐普根 및 同門 金思悅君이 採集한 標本을 調本한 結果
*Tetragnatha*屬의 1新種을 얻었기에 報告한다.

本 種은 *T. striata* L. Koch 및 *T. shikokiana* Yaginuma와 一見 類似하지만
生殖褶의 形態와 內部生殖器의 構造에서 뚜렷이 區別된다.

使用된 標本은 慶北大學校 師範大學 生物學科 動物分類學教室에 所藏되어
있다.

INTRODUCTION

The authors report a new species of the genus *Tetragnatha* as a result of the examination of specimens which are in Animal Taxonomical Laboratory, Department of Biology, Teacher's College, Kyungpook National University and collected by Bo Keun Seo, one of the authors, and Mr. Sa Yeol Kim. The types of new species are deposited in Animal Taxonomical Laboratory, Department of Biology, Teacher's College, Kyungpook National University.

The authors wish to express their hearty thanks to Mr. Sa Yeol Kim for offering the valuable specimens.

DESCRIPTION

Tetrangnatha coreana sp. nov.

(Korean name: Deul-galgeomi)

Female (holotype). Carapace yellowish brown, longer than width (3:2), median and cervical groove evident. Ocular area not protruded. AER slightly recurved in dorsal view, procurved in frontal view. PER recurved strongly. AER longer than PER (6:5). Eye row index 123. Eye area index 86. MOQ, height > posterior side > anterior side (14:13.5:13). Eye ratio, AME > PME=PLE > ALE (5:4:4:3). AEM separated from each other 0.8 times of their diameter, from ALE 2 times of their diameter. PME separated from each other 3 times of their of radius, and also from PLE. AME separated from PME 0.9 times of their diameter. ALE sparated from PLE 2 times of the diameter of AME. The height of clypeus 0.8 times of the diameter of AME.

Chelicerae yellowish brown, moderately stout. Guide teeth present on both margins. Five teeth on the promargin, 6 on the retromargin, with the exception of guide teeth. The first teeth on both largest, and then become smaller in turn (Fig. 4,5).

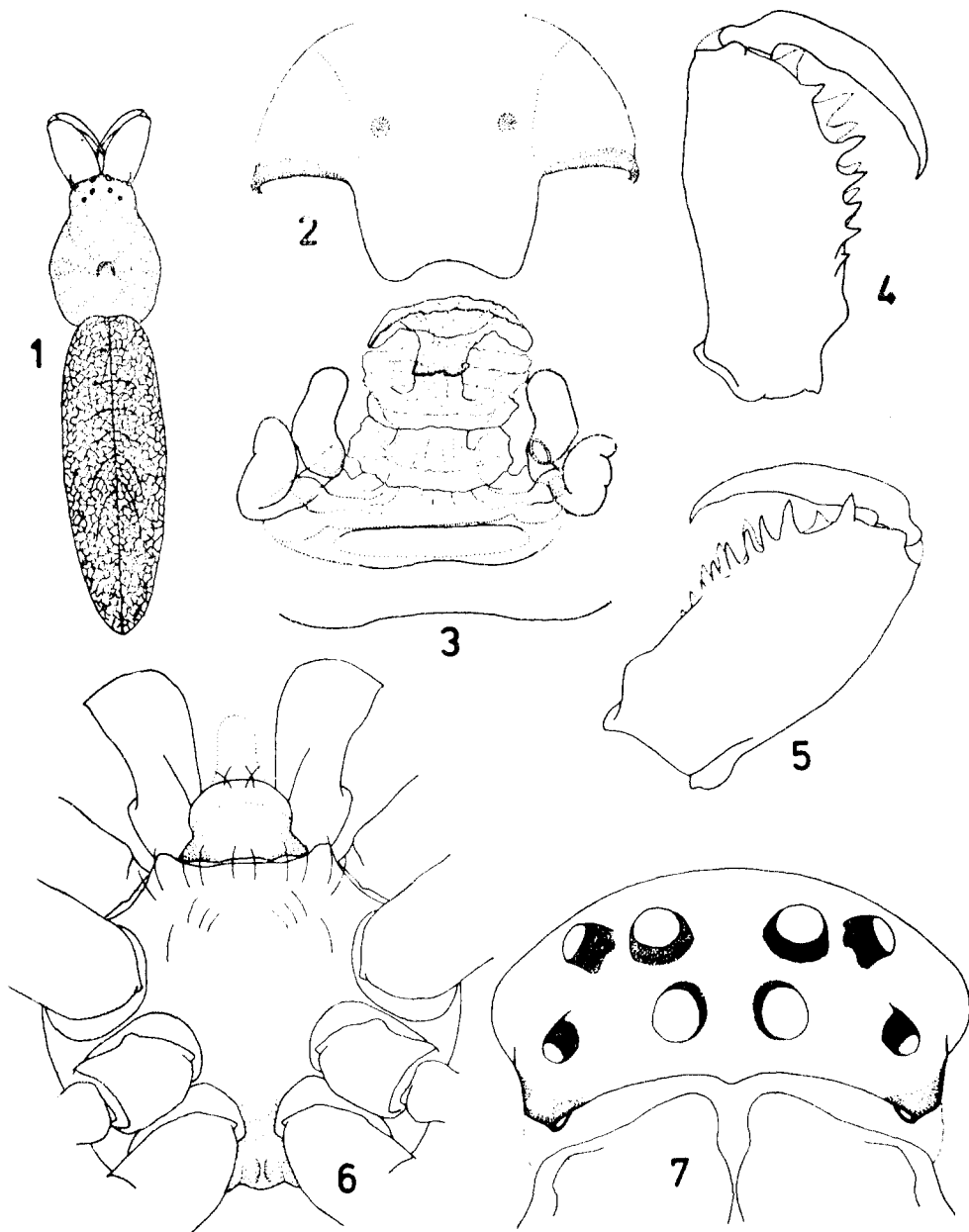
Labium and endite yellowish brown, inner margin of this and anterior margin of that more pale color. Both edges of labium dark brown. Labium wider than length (1.3:1). Endite longer than width (2.1:1). Sternum yellowish brown, posterior margin dark brown, longer than width (1.3:1). The posterior region of sternum protruded between both 4th coxae. The diameter of 4th coxa 0.51 mm. Both 4th coxae separated from each other 0.35 times of their diameter. Legs yellowish brown. Leg formula 1 2 4 3. Leg formula index 100:68: 31:66. Leg I/C 7.74, Fem. I/C 2.18, Fem. I l/d 13.11 (5.77/0.44), Tib. I l/d 16.51 (6.11/0.37), Leg I pat.+tib./C 2.59 (6.86/2.65).

Abdomen elliptical, yellowish white dorsoventrally. Genital fold as in Fig. 2. Genitalia with a mushroom cloud-like structure on the middle region and a pair of seminal receptacles on each side as in Fig. 3.

Diagnosis. This species is similar to *T. striata* L. Koch and *T. shikokiana* Yaginuma. But it differs from the latter species in the following points.

Table 1. Measurements of legs (mm.).

	Fem.	Pat.	Tib.	Met.	Tar.	Total
I	5.77	1.09	6.11	6.25	1.63	20.51
II	4.21	0.95	3.87	4.01	1.15	13.92
III	2.10	0.61	1.49	1.63	0.68	6.37
IV	4.69	0.75	3.67	3.80	0.88	13.59
Palp	1.12	0.41	0.81	—	1.29	3.56



Figs. 1-7. *Tetragnatha coreana* sp. nov.

1. Abdomen and carapace with cheliceae. 2. Genital fold. 3. Genitalia (dorsal view).
 4. Left chelicera (dorsal view). 5. Ditto (ventral view). 6. Sternum. 7. Eyes (frontal view).

Table 2. Spination.

		Dorsal	Prolateral	Retrolateral	Ventral
Fem.	I, II	1-1-0-0-0	1-1-1	0-1-1	0
	III	1-1-0-0-0	0	0	0
	IV	1-1-1-1-1	0-0-1	0-0-1	0
Tib.	I	1-0-0-0	1-1-1	1-1-1	0
	II, IV	1-0-0-0	0-1-1	0-1-1	0
	III	0	0-1-0	0	0
Met.	I, II	1-0-0-0	1-0-0	1-0-0	0
	III	1-0-0-0	1-0-0	0	0
	IV	1-0-0-0	0-1-1	0-1-1	0

Table 3. Measurements and indices of each part of *Tetragnatha coreana* sp. nov. (holotype)

	Length	Width	Index		Length	Width	Index
Total	8.52	—	—	Labium	0.41	0.54	213
Body	7.93	—	—	Endite	0.89	0.43	48
Chelicera	1.43	0.73	51	Head	—	1.11	61
Carapace	2.65	1.81	68	AER	0.96	—	—
Abdomen	5.42	1.81	33	PER	0.78	—	—
Sternum	1.35	1.03	76				

- (1) The mushroom cloud-like structure on the middle region of genitalia.
- (2) The shape of genital fold.

Specimens examined. **Holotype:** ♀, 4-VIII-1978, Sacheon, collected by Sa Yeol Kim.
Paratype: Sangju (1♀, 15-VIII-1956, I.H. Sohn), Daegu (1♀, 27-VII-1955, I.H. Sohn; ♀, 8-VIII-1971, J.S. Kim), Pohang (3♀♀, 25-VIII-1955, M.B. Kim), Sinji-do, Wandogun (1♀, 15-VII-1978, B.K. Seo), Sacheon (2♀♀, 4-VIII-1978, S. Y. Kim).

REFERENCES

- Locket, G.H. and A.F. Millidge, 1953. British Spider II. Mectim & Son Ltd London, pp.1-449, Textfigs. 1-254.
- Okuma, C., M.H. Lee and N. Hokyoo, 1978. Fauna of Spiders in a Paddy Field in Suweon, Korea. *Esakia* (11):81-88.
- Paik, W.H. and J. Namkung, 1979. Studies on the Spiders of the Paddy Field in Korea. Publishing Dept. Seoul Nat. Univ., Seoul, pp.1-101, Pls. 1-14 (with 70 figs.), Text-figs. 1-78.
- Wiehle, H., 1963. Die Tierwelt Deutschlands. Gustav Fischer Verlag, Jena, pp.1-61, Text-figs. 1-124.
- Yaginuma, T., 1969. Spiders of Japan in Colour. Hoikusa Publishing Co., Osaka, pp. i-iii+1-186+ pp. 1-8, Pls. 1-56, Text-figs. 1-101.