

치과용 도재 용착주조관(陶材溶着鑄造冠)의 수리에 대한 실험적 고찰

유양석 치과

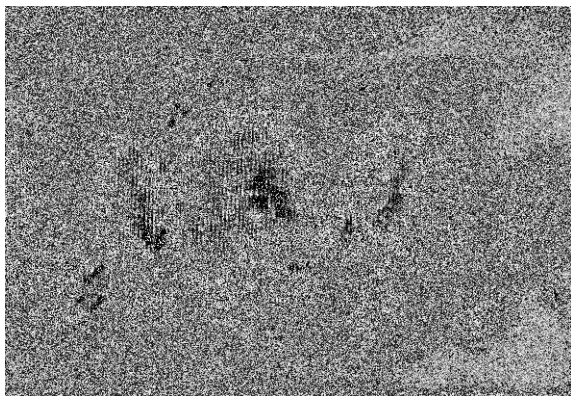
An experimental study of repair of porcelain-fused to metal restorations

10
가 (porcelain fracture) framework) 가
가 (metal framework)
가

제작과정(procedure)
1. (carbide bur)
(diamond cutting instrument)
pontic
(soft tissue)

도재를 용착할 over casting(over coping)제작에 의한 수리방법

(porcelain) (metal over casting), opaque,
pontic (1). wein berg가
가 over coping() (metal (2).



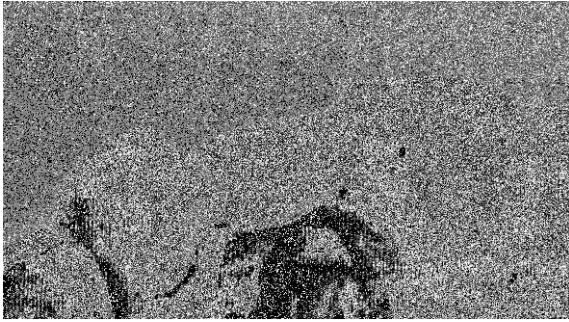
1.



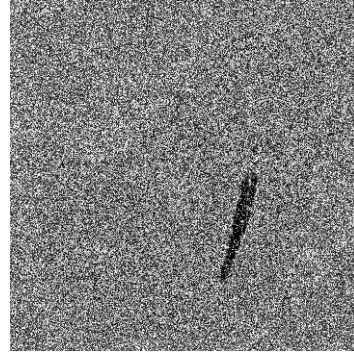
2. pontic

2. 가 (working cast) .(3)

surface) 가 (7) (porcelain fracture) pontic 가



3. 上



4.

3. 가 (over casting) 가 (non precious alloy)

4. (over casting)

5. (over casting) (stain) glaze

6. poly carboxylate cement (4, 5, 6)

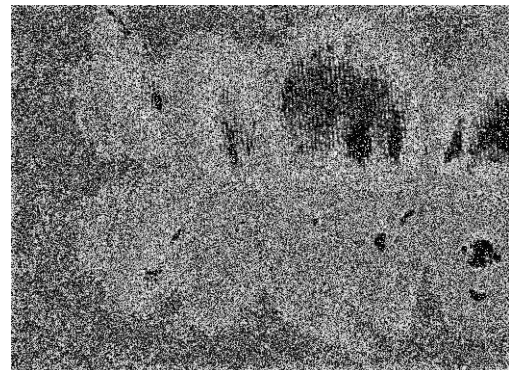


5.

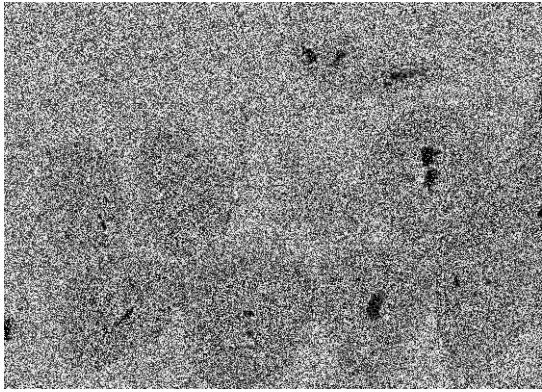
(occlusal stress) (heat polymerized acrylic resin)

도재를 용착할 금속전장판 (metal facinf)(pin에서 유지를 얻을 수 있는)제작에 의한 수리방법

(long span fixed partial denture) (labial surface) (occlusal) (incisal), (lingual



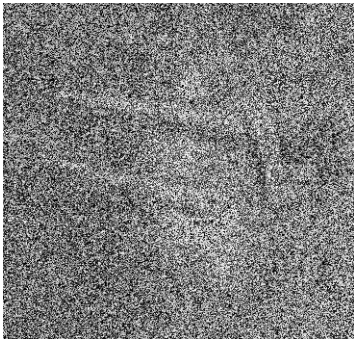
6.



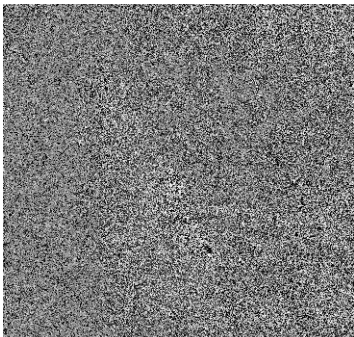
7.

제작과정

1. (Green stone)
.()
2. (metal framework)
(labial surface) 가 feather edge margin

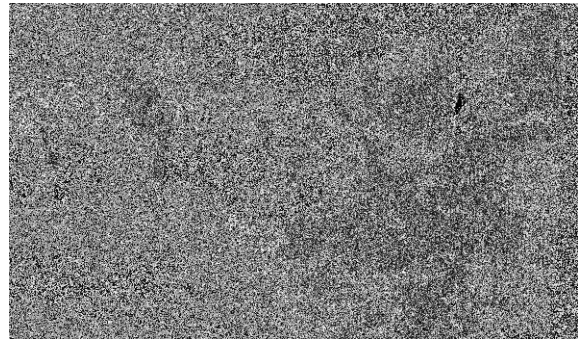


8.

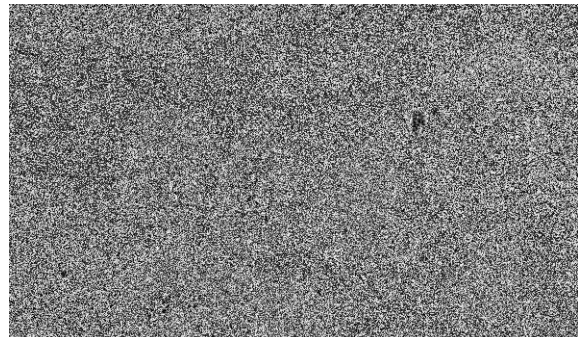


10.

3. 169 fissure bur
pin holes (가)
(pulp) 가 pinholes가
- pin hole
- (bucco-lingual diameter) =
- pontic pin hole
- (metal framework) pin hole
- 가
4. (labial aspect)
(occlusal aspect)
- (custom tray)
(elastic impression)
5. (elastic impression material)
(nylon pin)
6. die pin retained porcelain fused to
metal restoration .(8, 9, 10, 11)



9. 上

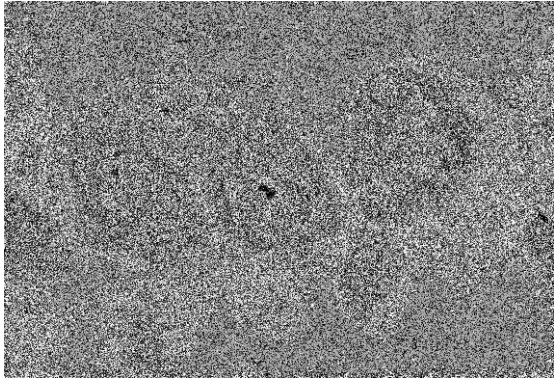


11.

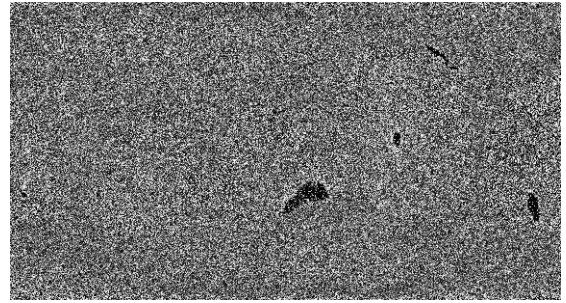
도재에 결합되는 합성수지(composite resin)를 이용한 수리방법

silane

(12).



12. 1



13. channel metal opaque

6. plastic instrument

가

6~7

diamond, sans paper disc, finishing pastes

(grazing agent)

(14).

제작과정

1. (diamond cutting instrument)

(fracture site)

2~3mm

1/2

2. (margin adaptation)

glaze

(cavosurface)

(margin bevel)

3. acid priming agent

water rinse dry acid

primary agent

(ionize)

4. silane bonding agent 30

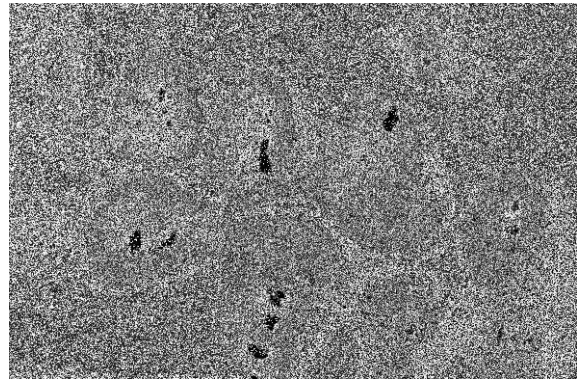
agent gentle dry

5. titanium dioxide added

repair material metal

opaque

(13).



14.

개 요

(over casting)

resin)가
 (composite resin)
 (composite
 가
 silance bonding
 agent
 (chemical bond)
 silance bond repair
 가 가

참 고 문 헌

1. Weinberg, L. A.: New design for anterior unit built porcelain prostheses. *J PROSTHET DENT* 21:61, 1969.

2. Hobo, S., and Shillingburg, H. T.: Porcelain fused to metal: Tooth preparation and coping design. *J PROSTHET DENT* 30: 28, 1973.

3. Moffa, J. P., Lugassy, A. A., Gucker, A. S., and Gettleman, L.: An evaluation of non-precious alloys for use with porcelain veneers. Part I. Physical properties. *J PROSTHET DENT* 30:424, 1973.

4. Ady, A. B., and Fairhurst, C. W.: Bond strengths of two types of cement to gold casting alloy. *J PROSTHET DENT* 29:217, 1973.

5. Siato, C., Sakai, Y., Wade, H., and Fusayama, T.: Adhesion of polycarboxylate cements to dental casting alloys. *J PROSTHET DENT* 35: 543, 1976.

6. Kornfield, M.: *Mouth Rehabilitation Clinical and Laboratory Procedures, Vol One.* St. Louis, 1978, The C. V. Mosby Co., p 230.

7. Newburg, R., and Pameijer, C. H.: Composite resins bonded to porcelain with silane solution. *J Am Dent Assoc* 96:288, 1978.

8. Weinberg, L. A.: *Atlas of Crown and Bridge Prosthodontics.* St. Louis, 1965, The C. V. Mosby Co., p 260.

9. Ruskin, R. A.: In the mouth repair technique. *Dent Survey* 46:37, 1970.

10. Aspes, T., and Mcilwain, J. E.: Restorative technique to repair pontics. *Dent Surv* 49:24, 1973.