

만성 이갈음 환자를 위한 metal posterior teeth

漢江成心病院 齒科技工室

Metal posterior teeth for chronic bruxing patient

가 陶齒
가 resin齒
가 陶齒(porcelain teeth)
가 齒(acrylic resin teeth)
가 occlusal amalgam inserts, cast gold occlusal surface, cutterbars
가 metal ribbon inserts
가 (removable partial denture)

(chronic-habitual bruxing patient)

가
가 陶齒(porcelain teeth)
가 齒(acrylic resin teeth)
가 natural teeth stops
가 stock acrylic resin teeth pattern
가 block metal posterior teeth

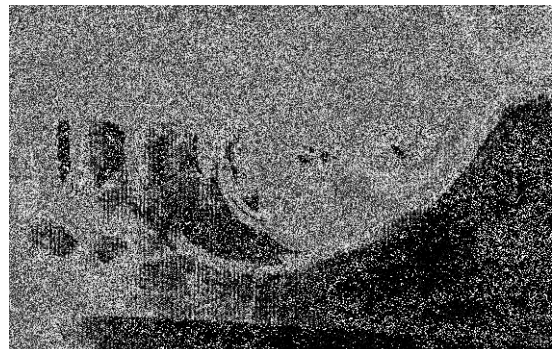
- 製作方法 (method) -

(mandibular distal extension situation)

(semi-adjustable articulator)
가 齒(acrylic resin teeth)
가 set up

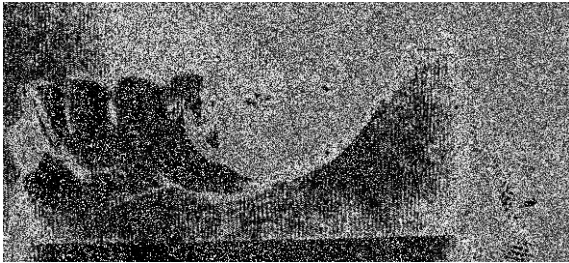
- 기공과정 (laboratory procedures) -

1. (posterior teeth)
(inter dental papilla)
(wax) (가) 1).



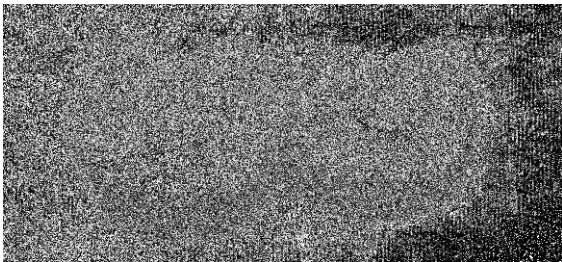
1. (inter dental papilla)
(wax)

2. 가 (cold-cure acrylic resin)
 가 (posterior teeth)
 (2).



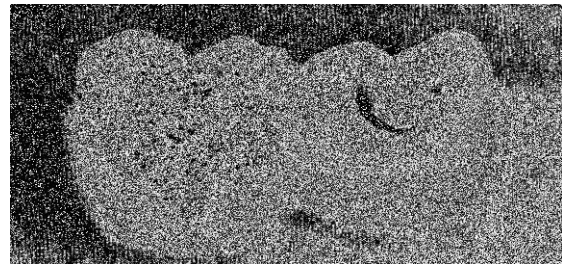
2. 가

3. (wax rim) block
 (3).

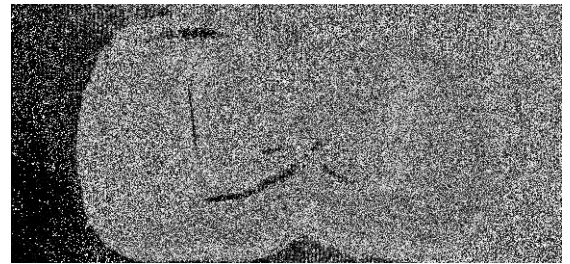


3. (polishing) block

4. (bur) 1.5mm
 (window)
 (retentive resin beads)
 (resin facing)
 (4)



4. 1.5mm (retentive resin beads)

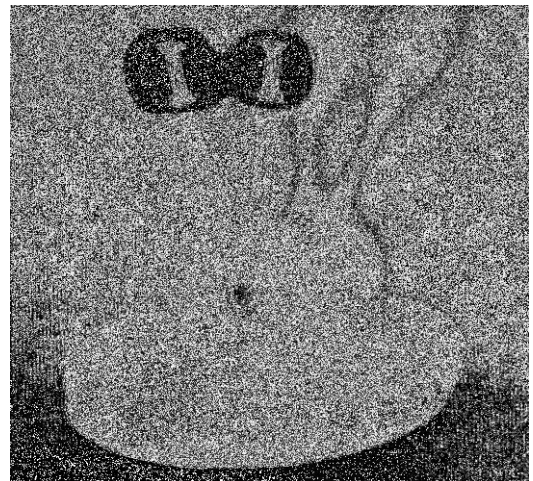


5. (retentive bur) (gingival aspect) (wax) (retentive bur) (bucco-lingually)

7. (retentive bur) 上
 (sprue) (6)
 (retentive bur)

(axillary sprue)

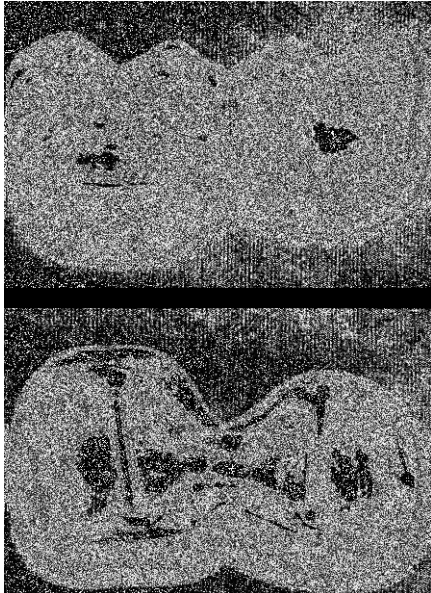
5. (bur)
 block (gingival surface)
 가 (Hollow grinding)
 6. (gingival surface)
 (bucco-lingually) (retentive bur)
 (wax) (5)



6. (retentive bur) 上

8. (nickel-chrome partial denture metal)

9. (7)



7.

10. (wax)

가 (contour)

11. (acrylic resin)

flasking (wax wash),

(resin packing) (curing)

(acrylic resin)

(8)

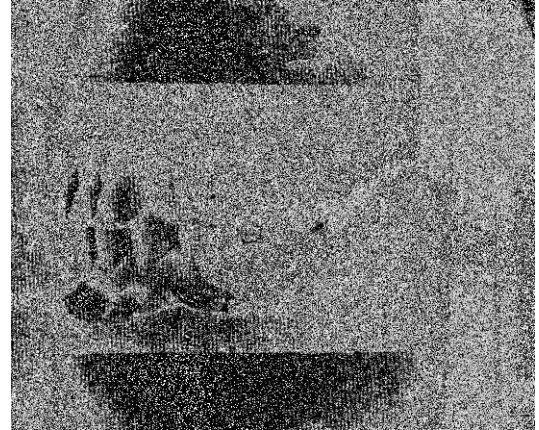


8. (resin) (resin facing)

12. (denture base) (waxing up)

(9)

2



9.

(gum festooning)

(卑金屬)

(base metal-ceramic alloy)

(retentive bead)

(porcelain)

陶材

- 토론(discussion) -

가

가 (removable partial denture)

(chronic habitual bruxing patient) 가

1. (posterior teeth)

2. (vertical ceramic alloy) (partial
dimension) ,
3. denture construction)

4. 가
5. (porcelain teeth) (resin
posterior teeth)
가

-개요(summary)-

(acrylic resin)
(dental porcelain) block(metal
posterior tooth block)
(nickel-chrome metal)
(hardness) 가 (removable
metal ceramic alloy) (soft base)
(hard nickel chromeium occlusal surface) 가
가 (ceramic (removable partial denture)
facing) 卑金屬 (base (chronic bruxing patient)
metal-