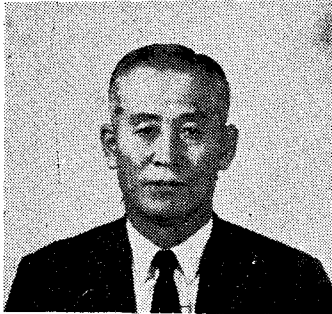


飼料需給事精과 畜産業의 展望



其 II

柳 允 洙

〈韓國飼料協會會長〉

● 전호에서 계속

- 4. 養鷄用飼料 生産實績(年度別, 月別)
- 5. 原料使用實績
- 6. 飼料導入實績
- 7. 76년 도입 옥수수 구매 내역표.

- 8. 1974年度 日本의 家畜別 飼料原料別 配合比率과 營養水準
- 9. 日本의 配合飼料 原料使用趨勢(%)
- 10. 1975年度 · 國內産 · 配合飼料別 原料別 配合比率과 營養水準
- 11. 最近, 國際穀物時勢

4. 養鷄用配合飼料生産實績(年度別, 月別)

가. 養鷄用飼料(總計)

(單位: %)

	1970	1971	1972	1973	1974	1975	1976
1	26,904	35,909	51,329	56,829	41,481	37,717	56,069
2	25,716	41,358	47,089	47,505	39,332	44,496	51,143
3	30,045	46,471	51,981	62,730	41,200	41,966	61,310
4	35,421	53,552	60,788	62,331	44,045	38,213	68,371
5	40,725	52,493	61,911	59,689	46,215	43,348	74,026
6	46,644	59,955	61,900	58,956	48,891	50,811	76,205
小計	205,455	289,738	334,998	348,040	261,164	256,551	387,124
增加率	(100)	(141.0)	(163.1)	(169.4)	(127.1)	(124.9)	(188.4)
7	46,054	52,743	54,816	62,547	49,557	43,901	—
8	40,353	52,424	47,967	59,023	46,068	47,307	—
9	41,074	54,189	54,088	59,876	46,609	50,919	—
10	41,646	50,872	51,927	54,598	52,479	52,623	—
11	40,872	55,486	48,773	51,114	44,504	55,533	—
12	44,244	57,701	53,759	50,132	54,052	61,732	—
小計	254,243	323,415	311,330	337,290	293,269	312,015	—
增加率	(100)	(127.2)	(122.5)	(132.7)	(115.3)	(122.7)	—
下半年/上半年	(123.7)	(112.0)	(92.9)	(96.9)	(112.3)	(121.6)	—
合計	459,698	613,153	646,328	685,330	554,433	568,566	—
對比(%)	(100)	(133.4)	(140.6)	(149.1)	(120.6)	(123.7)	—

나. 育雛用飼料

(單位：%)

	1970	1971	1972	1973	1974	1975	1976
1	4,484	5,263	7,843	8,197	7,167	6,934	11,119
2	3,883	5,709	7,435	8,071	6,075	7,261	9,002
3	5,553	7,423	9,088	10,714	6,743	7,019	9,772
4	4,191	8,092	10,191	11,277	6,963	6,459	11,887
5	7,870	8,204	9,878	9,781	8,114	7,570	15,004
6	8,836	8,785	8,270	9,600	8,181	9,548	16,688
小計	37,817	43,476	52,705	57,640	43,243	44,791	73,472
增加率	(100)	(115.0)	(139.4)	(152.4)	(114.3)	(118.4)	(194.3)
7	8,105	6,996	8,060	9,851	8,163	8,288	—
8	5,955	7,788	6,943	9,174	7,731	8,809	—
9	5,605	6,993	7,873	10,575	7,248	8,938	—
10	5,490	5,570	7,041	8,780	8,796	9,665	—
11	4,911	7,859	6,580	8,108	7,555	11,184	—
12	5,747	8,281	7,220	7,623	9,459	12,527	—
小計	35,813	43,487	43,717	54,111	48,951	59,411	—
增加率	(100)	(121.4)	(122.1)	(151.1)	(136.7)	(165.9)	—
下半年/ /上半期	(94.7)	(100.0)	(82.9)	(93.9)	(113.2)	(132.6)	—
計	73,630	86,963	96,422	111,751	92,194	104,202	—
對比(%)	(100)	(118.1)	(131.0)	(151.8)	(125.2)	(141.5)	—

다. 成鷄用飼料

(單位：%)

	1970	1971	1972	1973	1974	1975	1976
1	19,342	26,522	36,569	40,024	30,612	26,268	38,664
2	18,656	30,539	33,736	32,788	30,113	31,424	35,844
3	19,979	32,620	35,220	41,324	30,827	28,495	42,730
4	21,778	37,724	39,151	39,665	31,017	25,456	43,535
5	25,872	35,525	38,398	37,380	30,114	28,074	44,141
6	28,696	40,880	40,770	37,084	31,736	31,054	42,815
小計	134,323	203,810	223,844	228,265	184,419	170,771	247,729
增加率	(100)	(151.7)	(166.6)	(169.9)	(137.3)	(127.1)	(184.4)
7	28,909	35,626	34,526	39,735	31,664	26,225	—
8	27,511	34,066	31,566	36,331	29,753	29,450	—
9	29,601	36,845	36,274	36,498	31,354	32,403	—
10	31,472	37,012	36,257	35,797	35,801	34,542	—
11	31,310	39,784	33,695	35,828	31,388	36,513	—
12	33,311	40,142	38,040	36,389	37,864	41,466	—
小計	182,114	223,475	210,358	220,578	197,824	200,599	—
增加率	(100)	(123.3)	(115.5)	(121.1)	(108.6)	(110.1)	—
下半年/ /上半期	(135.6)	(109.6)	(94.0)	(96.6)	(107.3)	(117.5)	—
%	316,437	427,285	434,202	448,843	382,243	371,370	—
對比(%)	(100)	(135.0)	(137.2)	(141.8)	(120.8)	(117.4)	—

4. 肉雞用飼料

(單位：%)

	1970	1971	1972	1973	1974	1975	1976
1	3,078	4,124	6,917	8,608	3,702	4,515	6,286
2	3,177	5,110	5,918	9,646	3,144	5,811	6,297
3	4,513	6,428	7,673	10,692	3,630	6,452	8,808
4	6,452	7,736	11,446	11,389	6,065	6,298	12,949
5	6,983	8,764	13,635	12,528	7,987	7,704	14,881
6	9,112	10,290	12,860	12,272	8,974	10,209	16,702
小計	33,315	42,452	58,449	62,135	33,502	40,989	65,923
增加率	(100)	(127.4)	(175.4)	(186.5)	(106.6)	(123.0)	(197.9)
7	9,040	10,121	12,230	12,961	9,730	9,388	—
8	6,887	10,570	9,458	13,518	8,584	9,048	—
9	5,868	10,351	9,941	12,803	8,007	9,578	—
10	4,684	8,290	8,629	10,021	7,882	8,316	—
11	4,651	7,843	8,498	7,178	5,561	7,836	—
12	5,186	9,278	8,499	6,120	6,429	7,739	—
小計	36,316	56,453	57,255	62,601	46,494	52,005	—
增加率	(100.0)	(155.4)	(157.7)	(172.4)	(128.0)	(143.2)	—
下半年/ /上半年	(109.0)	(133.0)	(98.0)	(100.7)	(138.8)	(126.9)	—
合計	69,631	98,905	115,704	124,736	79,996	92,994	—
對比(%)	(100)	(142.0)	(166.2)	(179.1)	(114.9)	(133.6)	—

5. 原料使用實績

(單位：%)

年 月	穀 類	糖 類	動 物 性	粕 類	其 他	計
75. 1	30,097	17,266	2,981	5,786	3,980	60,110
2	33,550	18,381	3,869	6,867	3,946	66,613
3	30,778	19,323	3,463	6,126	4,193	63,883
4	28,422	16,897	3,095	5,762	3,458	57,634
5	32,006	18,733	3,579	6,478	4,010	64,806
6	34,876	18,622	4,244	7,715	4,450	69,907
7	29,737	17,069	3,468	6,734	3,787	60,795
8	32,461	18,556	3,876	7,771	4,156	66,820
9	33,946	19,675	4,181	7,721	4,976	70,499
10	35,488	21,127	4,271	7,981	5,487	74,254
11	36,089	21,471	4,386	8,228	5,571	75,745
12	40,406	22,813	4,939	9,096	6,275	83,529
	(48.8)	(28.2)	(5.7)	(10.6)	(6.7)	(100.0)
計	(397,856)	(229,933)	(46,252)	(86,265)	(54,289)	(814,595)
76. 1	38,430	24,134	4,029	7,753	5,796	80,142
2	34,895	20,069	3,557	7,080	4,716	70,317
3	44,244	23,883	4,112	9,976	5,781	87,996
4	49,302	22,584	4,897	11,515	6,017	94,315
5	52,862	20,428	5,464	12,697	6,394	97,845
6	57,520	20,388	5,982	12,689	6,494	103,073
計	277,253	131,486	28,041	61,710	35,198	533,688

6. 飼料導入実績

(單位：數量%, 金額\$)

年度	穀類飼料		角粉		大豆粕	
	數量	金額	數量	金額	數量	金額
1962	21,466	(48.08) 1,032,068	—	—	—	—
63	17,724	(70.21) 1,224,340	—	—	—	—
64	5,000	(65.00) 325,000	—	—	—	—
65	—	—	—	—	—	—
66	2,875	(71.65) 205,994	—	—	—	—
67	45,268	(71.07) 3,216,971	—	—	—	—
68	82,251	(65.99) 5,444,852	13,240	(152.54) 2,019,586	2,360	(118.60) 279,896
69	196,300	(66.68) 13,089,865	11,819	(179.46) 9,120,979	7,733	(107.88) 834,215
70	259,408	(73.21) 18,992,205	19,404	(204.20) 3,962,205	28,856	(113.38) 3,271,831
71	390,397	(68.09) 26,588,825	22,733	(197.07) 4,479,963	17,798	(122.27) 2,176,241
72	425,696	(61.68) 26,258,869	16,138	(195.88) 3,170,865	15,544	(129.06) 2,006,068
73	497,903	(110.21) 54,872,808	647	(263.19) 170,285	8,143	(159.75) 1,300,825
74	427,464	(155.79) 66,595,609	—	—	—	—
75	405,847	(149.94) 60,851,716	—	—	—	—
76(계획)	560,000	—	—	—	—	—

年度	大豆		其他		計	
	數量	金額	數量	金額	數量	金額
1962	—	—	—	—	21,466	(48.08) 1,032,068
63	—	—	—	—	17,724	(70.21) 1,244,340
64	—	—	—	—	5,000	(65.00) 325,000
65	—	—	—	—	—	—
66	—	—	—	—	2,875	(71.65) 205,994
67	—	—	—	—	45,268	(71.07) 3,216,971
68	—	—	125	(68.00) 8,500	97,976	(79.13) 7,752,833
69	—	—	2,659	(90.07) 239,490	218,511	(74.53) 16,284,549
70	—	—	2,816	(160.50) 451,973	310,484	(85.92) 26,678,214
71	36,271	(137.61) 4,991,125	3,820	(162.69) 621,489	471,019	(82.49) 38,852,649
72	39,470	(142.19) 5,612,147	3,694	(130.03) 480,317	500,542	(74.93) 37,528,266
73	39,438	(271.42) 10,704,152	4,168	(252.31) 1,051,626	550,299	(123.75) 68,099,696
74	19,188	(341.07) 6,539	18,872	(133.74) 2,523,867	465,524	(162.54) 75,664,015
75	29,652	(253.68) 7,522,243	646	(377.08) 243,596	436,145	(157.33) 68,617,555
76(계획)	대두박 60,000	—	—	—	620,000	—

註：1. () 內는 % 當 C&F 價格

2. 1962年度價格은 FOB價格임.

7. 76년 도입옥수수 구매내역표

입찰구분		COF (\$)	선명	B/L(선적수량)	도착예정일(ETA)	종별
일시	수량					
75. 10. 28	33,000 5%ML	126.45	Sand Vagg	33,000	1.5	
	30,000 5%ML (63,000)	126.95	M.P. Lemos	27,060.144	1.7	
75. 12. 23	40,000 5%ML	122.13	Tsangaris	40,132	2.22	
	40,000 5%ML (80,000)	123.31	Pan Western	41,260.100	3.30	
Total		143,000				
76. 1. 30	19,000 5%ML (19,000)	125	Chuenon	19,950	3.23	
76. 2. 13	40,000 5%ML	125.77	Budapest	△38,322,382	5.12	
	40,000 10%ML	126.35	Hector	44,000	5.30	
	20,000 10%ML	127.41	Mariime Reliance	22,000	6.27	
	40,000 5%ML (140,000)	128.04	Farmsum	△38,090.199	7.3	
76. 6. 4	19,000 5%ML (19,000)	126.60	Pacific Defender	19,264.245	6.29	
76. 5. 25	6,400 (6,400)	143.25	Satco	△6,100	6.27	
76. 5. 28	40,000	135.67	Althea	△38,109.462	8.1	
	20,000	136.12	Spero	20,511.657	8.2	
	50,000 (110,000)	136.64	Struma	△46,640.866	8.3	
76. 7. 6	6,500	139	Taifookshan	△6,245.210	8.6	
	10,000	139.20	Honkgkongs- urety	8,150.984264	8.3	
	5,000		Asmari	6,294.442836	8.10	
	8,500	138.95	Manming	8,741.667	8.15경	
	20,000 (50,000)	127.45	Milena	21,186.983	9.3경	수수
76. 7. 23	40,000	133.60	Hallagieg		9.20	
	15,000 (55,000)	125.42	Anthemios		9.30	수수
76. 8. 12	40,000	125.90			10.15경	
	10,000	121.50			9.25경	
	30,000 (80,000)	125.57			10말경	
Total		479,400		560,000.1981		

8. 1974年度 日本의 家畜別 飼料原料別 配合比率과 營養水準

飼料別	種 別	養鷄用	養豚用	乳牛用	肉牛用	其他家畜禽	養魚用	其他用	備 考
穀 類	粳 米	47.0	30.7	10.6	18.0	48.9	1.1	22.6	
	籼 米	18.6	34.1	19.7	34.3	3.9	1.1	6.9	
	小 麥	0.1	0.7	0.3	0.2	0.4	0.0	0.1	
	大 裸 麥	5.1	0.7	1.3	5.4	0.2	0.2	0.1	
	其他穀類	0.4	2.5	2.3	5.9	2.1	16.5	15.2	
	小 計	(66.2)	(68.7)	(34.2)	(63.8)	(55.5)	(18.9)	(44.9)	
糖 類	蔗 糖	1.0	2.8	11.0	5.1	1.3	2.8	6.8	
	米 糠	0.6	0.7	1.0	3.9	2.6	0.9	0.2	
	脫 肪 糠	1.2	2.1	5.2	1.8	1.5	5.0	5.6	
	其他糖類	1.5	1.5	14.0	4.5	4.3	6.3	3.9	
	小 計	(4.3)	(7.1)	(31.2)	(15.0)	(9.7)	(15.9)	(15.5)	
alfalfa		(2.1)	(1.6)	(1.7)	(5.2)	(2.2)	(0.9)	(4.0)	
粕 類	大 豆 粕	10.7	11.0	10.2	3.5	10.2	4.4	6.9	
	其他粕類	2.4	1.7	10.2	2.8	1.2	1.1	1.8	
	小 計	(13.1)	(12.7)	(20.4)	(6.3)	(11.4)	(5.5)	(8.7)	
動物性	魚 粉	4.5	3.0	0.1	0.0	9.8	47.4	4.2	
	魚斗吸着	1.1	0.0	0.1	0.0	0.3	0.3	0.1	
	脫 脂 粉 乳	0.00	0.3	0.9	0.0	2.6	0.0	0.1	
	其他動物性	1.0	0.4	0.2	0.1	1.3	1.4	7.9	
	小 計	(6.6)	(3.7)	(1.3)	(0.1)	(14.0)	(49.1)	(12.3)	
其 他	油 脂	0.9	0.3	0.0	0.0	0.1	0.0	0.3	
	油 脂 吸 着	0.1	0.2	0.1	0.0	0.0	—	—	
	糖 密	0.5	2.6	6.0	5.0	1.1	0.1	0.3	
	糖 密 吸 着	0.0	0.1	0.2	0.3	0.0	—	0.0	
	微量添加物	0.3	0.5	0.1	0.3	0.4	1.3	11.5	{ 抗生物質, 抗生物質
	特殊飼料	5.7	2.2	3.8	3.6	5.3	5.6	2.0	以外的 동물약품, 비
	其他飼料	0.2	0.3	1.0	0.4	0.3	2.7	0.5	타민류, 무기물류,
	小 計	(7.7)	(6.2)	(11.2)	(9.6)	(7.2)	(9.7)	(14.6)	아미노산류, 프리믹
合 計		100.0	100.0	100.0	100.0	100.0	100.0	스방매제, 항산화제,	
C.P		16.28%	15.37%	16.87%	11.91%	19.24%	36.00%	17.71%	기타
		Kcal	Kcal	Kcal	Kcal	Kcal			
M.E		2,836	2,646	2,532	2,523	2,697			

9. 日本의 配合飼料 原料使用趨勢(%)

年度別	穀 類	糖 類	알과과	植物性粕類	牛脂糖密 및 同吸着	微量添加物	特殊飼料	其 他	計
1965	57.2	16.0	—	5.8	3.4	0.2	3.9	1.0	100
1966	58.3	11.7	2.9	5.1	3.6	0.3	4.1	0.6	100
1967	59.2	10.8	2.3	5.7	3.2	0.3	4.2	0.6	100
1968	59.4	10.8	2.8	6.0	3.0	0.3	4.2	0.6	100
1969	60.8	10.3	2.7	5.4	3.0	0.3	4.3	0.5	100
1970	60.6	9.6	2.7	4.1	3.0	0.3	4.5	0.4	100
1971	60.9	9.5	2.6	4.6	3.0	0.3	4.5	0.4	100
1972	60.2	9.1	2.5	4.6	2.9	0.4	4.4	0.3	100
1973	62.4	9.1	2.3	4.5	3.2	0.4	4.4	0.3	100
1974	63.1	9.0	2.2	4.7	3.2	0.4	4.3	0.3	100
1975	63.1	9.8	2.0	5.2	2.9	0.4	4.2	0.4	100

10. 1975年度 國內產 配合飼料別 原料
別 配合比率과 營養水準

(單位: %)

區 分	韓 牛	乳 牛	肉 牛	養 豚	產 卵	肉 鷄
穀 物	37	31	37	37	56	60
糠 類	49	53	49	49	21	13
粕 類	9	12	9	9	9	11
魚 粉	2	1	2	2	9	12
無 機 物	3	3	3	3	5	4
計	100	100	100	100	100	100
C.p(%)	14.5	15.3	14.5	14.5	15.9	17.6
M.E(Kcal)	2,493	2,494	2,493	2,303	2,535	2,682

11. 最近, 國際穀物時勢

	옥 수 수			大 豆 粕		
	9	12	3	9	12	1
6. 29	137	136	—	252	254	—
6. 30	135	134	—	255	255	—
7. 1	134	132	—	258	259	—
7. 7	141	141	—	—	—	—
7. 8	137	137	—	—	—	—
7. 9	139	137	—	278	280	—
7. 13	138	136	—	—	—	—
7. 14	138	136	—	—	—	—
7. 15	142	140	—	265	—	—
7. 29	136	128	134	240	243	247
8. 4	134	126	133	—	—	—
8. 5	135	128	134	230	234	236

◇ 토막해외뉴스, —미국—

미국의 1975년 1~8월의 가금육의 수출량은 56,000톤이며, 전년동기에 비해 7%가 증가했다.

이동안 E.C.(유럽공동시장)에 수출한 양은 '75년 1~6월까지 10,000톤였고, 전년 동기에 9,000톤에 비해 11%가 증가했다. E.C의 수출가금의 대부분은 도체의 칠면조 고기이다.

EC는 수입가금육에 대하여 부과금이 높고, 수시로 변동되기 때문에 미국의 대 EC수출은 상당히 저조하고 기피하는 추세에 있다.

EC에 들어가는 칠면조육은 미국의 것이 95%를 점하고 있다.

그중 서독이 많이 구입해가고 있다.

미국의 1975년의 수출 가금육은 홍콩에도 많이 수출하고 있는데, 전체의 약 13%를 점하고 있으며, 일본에는 12% 수출을 하고 있지만, 전년도 보다 감소하고 있다.

홍콩과 일본은 주로 부로일러 수출이다.

—편집부—

양지

가축약품

부화장

- ◇ 우수품질 증정 상품분양
- ◇ 경품 · 사양관리 상담
- ◇ 동물약품 염가 도산매

네오크로 } 고농도분말
판 옥 시 }

네오크로 } 산란강화제
판 옥 시 }

서울 · 성동구 천호동 413
전화 : 56-1938, 55-2208