

# 산화타이타늄-셀룰로오스 복합재 제조 및 바이오센서 응용 TiO<sub>2</sub>-cellulose nanocomposites: Fabrication and bio-sensor application

\*M Maniruzzaman<sup>1</sup>, #김재환<sup>1</sup>, 정혜전<sup>1</sup>

\*M Maniruzzaman<sup>1</sup>, #J. H. Kim(jaehwan@inha.ac.kr)<sup>1</sup>, H. J. Jung<sup>2</sup>

<sup>1</sup>인하대학교 기계공학과

Key words : TiO<sub>2</sub>, cellulose, biosensor, glucose oxidase

## 1. Introduction

Inorganic-organic nanocomposite materials form an attractive new class of functional hybrid material demonstrating improved optical, thermal and mechanical properties due to synergistic results developed from the physical or chemical interactions between the inorganic and organic materials [1]. These hybrid materials offer the advantages of flexibility, light-weight, low cost and low impact resistance and have wide applications such as sensors, solar cells, displays, etc.

Titanium dioxide (TiO<sub>2</sub>) is a wide band gap semiconductor which has recently attracted enormous interests due to its wide range of chemical and physical properties including chemical stability, electrical conductivity, photocatalytic activity, and photosensitivity [2]. It is applicable in solar cell, photocatalysis, photoelectrochemical cell, chemical sensor, and electronic device [3]. In this study, flexible and biodegradable TiO<sub>2</sub>-Cellulose hybrid nanocomposite (TCHN) was fabricated and applied to a glucose sensor.

## 2. Experimental

Cellulose solution was first prepared by cotton pulp (MVE, DPW 7450) dissolving in LiCl/DMAc solvent at 155 °C with mechanical stirring followed by solvent exchange technique [4]. Then, TiO<sub>2</sub> nanoparticle was mixed with 15 mL of DMAc and sonicated in an ultrasonic bath for 1 h to get a homogeneous mixture. These stock solutions with various weight ratios of TiO<sub>2</sub> were added to 50 g of

1.5 wt% cellulose solution. The mixture was mechanically stirred for 2 h. The obtained mixture was spin coated onto a glass substrate and cured with isopropyl alcohol and DI water to get TiO<sub>2</sub>-cellulose films. Glucose oxidase (GO<sub>x</sub>) was immobilized into TCHN by physical adsorption method. Firstly, GO<sub>x</sub> solution was prepared by dissolving 0.025 g of GO<sub>x</sub> (EC 232-601-0, type X-S: *Aspergillus niger*, 155000 units/g, Sigma-Aldrich) per 10 ml of 0.1M phosphate buffer solution (pH 7.2). Secondly, TCHN samples were immersed into pH buffer and GO<sub>x</sub> solution for 16 h, at room temperature. To measure electrical property, a cell was constructed which consists of gold wire (φ 0.3 mm, 5 cm length) as one electrode and GO<sub>x</sub> immobilized TCHN as another electrode. Glucose (99.5%, EC 200-075-1 from Sigma Life Science) solution prepared in DI water with varying concentration (1~20 mM) was used as an electrolyte. The slope of current vs. potential (I-V) curve was used as a measure of enzyme activity.

## 3. Results and Discussion

Figure 1 shows SEM images of TCHN with 30 wt% of TiO<sub>2</sub>.

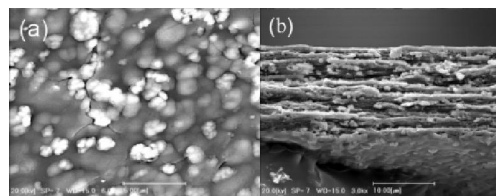


Fig. 1. SEM (a) surface and (b) cross sectional images of TCHN with 30 wt% TiO

Cross sectional and surface morphology display well dispersed TiO<sub>2</sub> nanoparticles into cellulose film. Larger portion of bright nanoparticles were displayed with increasing TiO<sub>2</sub> concentration.

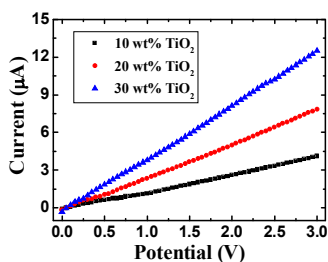


Fig.2. I-V characteristics showing effect of wt% of TiO<sub>2</sub> on enzyme activity of TCHN glucose sensor at 6 mM

To study the effect of wt% of TiO<sub>2</sub> on sensitivity of TCHN glucose sensor, the I-V characteristics of samples were measured at 6 mM glucose solution and shown in fig. 2. It is observed that current level increased up to 12.45 µA with increasing wt% of TiO<sub>2</sub> into cellulose at 3V applied potential. This can be attributed to increase crystalline of TiO<sub>2</sub> blended to the cellulose surface.

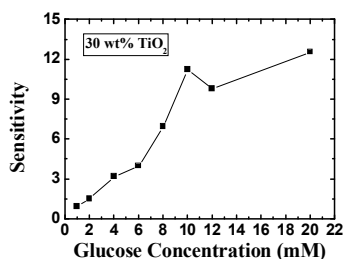


Fig. 3. Sensitivity of glucose biosensor as a function of glucose concentration for 30 wt% TiO<sub>2</sub>

To determine the detection range of proposed sensor, calibration curve was plotted by drawing sensitivity as a function of glucose concentration and shown in fig. 3. The linear response obtained in this study was in the range of 1~10 mM which covers clinical range of 3.5~6.5 mM glucose.

The detection mechanism of this proposed biosensor is believed to be the fact that GOx-glucose reaction results in releasing trapped electrons to the conduction band of TiO<sub>2</sub> which in turn increases the

conductivity of the biosensor [5].

#### 4. Conclusion

A feasibility study is carried out employing TiO<sub>2</sub>-cellulose hybrid materials. GOx was found attached with TiO<sub>2</sub>. Current level of this conductometric biosensor enhanced with increasing weight ratio of TiO<sub>2</sub> into cellulose. Sensors were found highly sensitive at lower concentration (≤ 10 mM). The improved sensitivity and linear response is obtained by tailoring the material properties like surface area, structure and conductance of the film.

#### Acknowledgement

This work was performed under the support of the Creative Research Initiatives (EAPap Actuator) of NRF/MEST, South Korea.

#### References

1. Marques, P., Trindade, T., Neto, C., "Titanium dioxide/cellulose nanocomposites prepared by a controlled hydrolysis method," *Compos. Sci. Technol*, **66**, 1038-1044, 2006.
2. Chen, T., Furubayashi, Y., Hirose, Y., Hitosugi, T., Shimada, T., Hasegawa, T., "Anatase phase stability and doping concentration dependent refractivity in codoped transparent conducting TiO<sub>2</sub> films," *J Phys D: Appl Phys*, **40**, 5961-5964, 2007.
3. McFarlang, E., Tang, J., "A photovoltaic device structure based on internal electron emission," *Nature*, **421**, 616-618, 2003.
4. Wang, N., Kim, J., Yun, S., Lee, S., "Electroactive-paper actuator made with LiCl/cellulose films: Effect of LiCl content," *Macroml. Res.*, **14**, 624-629, 2006.
5. Choi, H., Kim, M., Lee, W., "Amperometric glucose biosensor based on sol-gel-derived metal oxide/Nafion composite films," *Analytica Chimica Acta*, **537**, 179-187, 2005.