

Nuclear Waste Management and Accident of Fukushima Daiichi Nuclear Power Plants Due to the Great East Japan Earthquake

Y. Ichikawa, K. Kimoto

Department of Urban Environment Development, Okayama University, Okayama 700-8530, Japan

yiyi08@cc.okayama-u.ac.jp

This lecture will discuss the events that followed the earthquake, and the resulting tsunami, which occurred in Japan on 11th of March 2011. It will discuss the origins and severity of the earthquake, the resulting tsunami and the devastation and loss of human life that followed. In particular, world attention was focused on the nuclear

power plants located in Fukushima, which were damaged by the tsunami. The current conditions in the areas affected by the tsunami and reactor incident will also be discussed. The issues of nuclear waste management in Japan will be also discussed

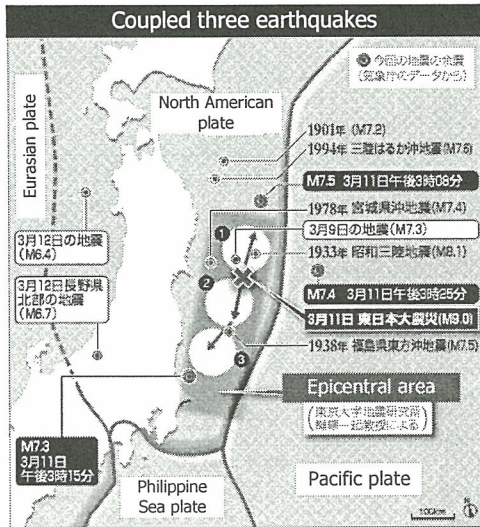


Fig. 1. Epicenter area of the Great East Japan Earthquake.

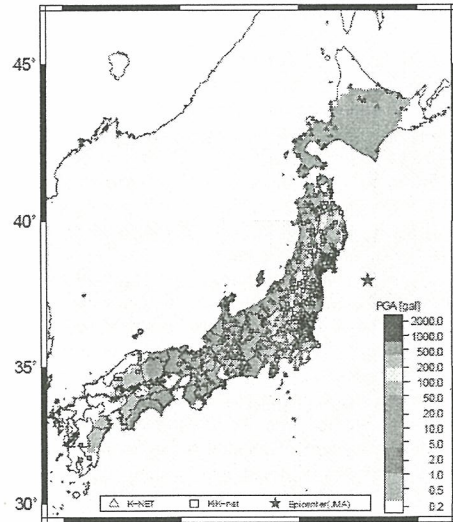


Fig. 2. Observed max. acceleration

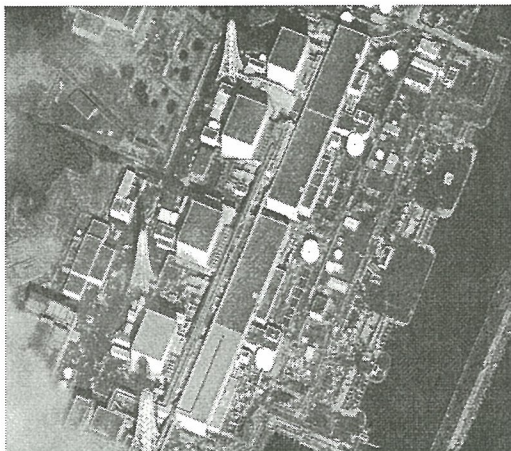


Fig. 3. Fukushima Daiichi on 2011.03.12

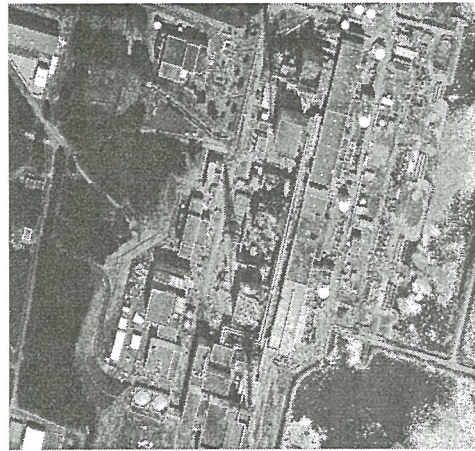


Fig. 4. Fukushima Daiichi on 2011.03.18.