

# 좁은공간에서의 신발장디자인

## Shoe Storage for Small Space

Wang, Kang Lin\*, Lee Sung Pil, Hyoung , Sung Eun

동서대학교 서비스이노베이션디자인센터

### ABSTRACT

The purpose of this research project is to provide information on emotional design and designs a kind of shoe storage for small space. Through researching the activities of target user and analyzing the present market, we get the clear understanding of direction for storage design, and create a new domain of for storages, with its added value and competition too. This will satisfy demand of consumers and benefit for enterprise.

*Keywords: Small space, Shoe Container*

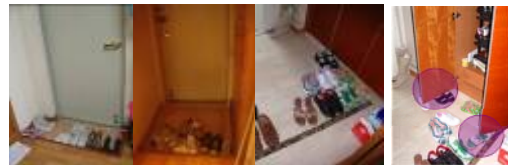
### 1. Introduction

The function and performances of storage can reflect the visual perceptual shape, and play a very important role in success of production. The preference of consumers has a close relation with the human touch and vision, such as color, shape and material. The product emotional design is a very complex system, it has been proven that the number of the elements has the positive influence to the added value after it product. Emotional elements of design require the understanding of the design through quantitative analysis and explain in detail. Combining emotional elements into human sensibility can improve the product design's success probability in the market.

### 2. Problems analysis

Analyzing problems and solution is a very important link of design process, which makes designer clear understanding of what is the purpose of design and will verify the probably of production.

#### 2.1 Problems analysis



-There is no shoe storage in this apartment

-There is shoe storage in this apartment

From the offline research, we found the problems as following:

- There's no shoe storage in the apartment.
- Confused for a number of increasing shoes.
- annoying storage of shoes on the shelf

It would be very confuse to arrange if the shoes is increasing in the house. We need some new idea for designs a shoe storage which can be better managing the shoes. In short, finding the ways of problem solution is necessary.

#### 2.2 Solution

To be established the concept of design and make sure it is necessary, we tried to find ways of

problem solution through the analysis and discussion.

- A number of increasing shoes
- Annoying the confused shoes.
- It's not there any methods which can easier arrange the shoes in the small space?

### 3. Design process

#### 3.1 User analysis



There are different users living in the different house, which make the shoes can not easy to arrange.



#### 3.2. Activities analysis

To be able to store the number of shoes, we analysis the user activities and the frequently worn shoes (1month, 1week)



The frequently worn shoes (1 Week, 1 Month)



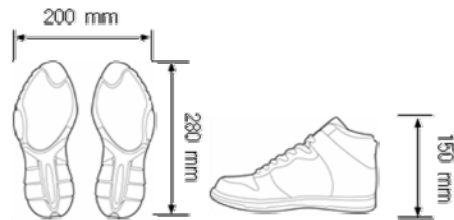
Number of shoes will confuse the house

#### 3.3. Analysis of dimensions

There are many forms of shelf in the modern market. The enterprise is making every effort to decrease the production cost and users who will check which side of shoe shelf would suit to their house. Therefore, researching the dimension of shoe is necessary.



Need small shoe storage.



#### 3.4. Questionnaire

The success of product depends on the great sale in the market and if it is real benefit for user. By using the Online and Offline Interview we caught a lot of useful information of users, which can make us clear understanding of target market. We interviewed the users in many ways as following:

Height



Is it convenient to use slippers?



What do you want? (Function)



We got the information from the interview that moderately height and small space would suit for the house, and users who is considering the convenient of the slipper and how to easy to take on and off the slipper.

#### 4. The results research and benefit



##### 4.1 Results of research

The results absorbed some good factors from the currently available shoe storage in market and consequently be improved. We managed to our storage be available in the use of product. Create a business domain of shoe storage for the consumer.

##### 4.2 Benefit

###### 4.2.1. The ways of opening the storage.



1. It takes too much space of the house.
2. There is a big door of storage we can not easy to open and close.
3. It makes us confuse to arrange the shoes at the fore door.

There are the benefits we found,

1. Small space is good for the storage.
2. Most worn shoes location is on the top part (Open and close it often)

###### 4.2.2. Control angle



- A. Good discernable angle
- B. Standard angle
- C. Easy to get shoes



###### 4.2.3 The added function



The stuffs we brought everyday always make us confused, how to make it comfortable is becoming an important thing in our life.



About the added value we found in the research of shoe storage that the stuffs all we brought can put it inside the storage and the wearing slipper we can put it inside immediate.



#### 5. Competitive

品牌	产品系列	产品系列	产品系列	产品系列	产品系列
品牌	产品系列	产品系列	产品系列	产品系列	产品系列
品牌	产品系列	产品系列	产品系列	产品系列	产品系列
品牌	产品系列	产品系列	产品系列	产品系列	产品系列

Price of product has a close relation with consumers. We compared the different prices with the other products which sold in the present market, and made a moderately choice on price which is able to gratify the great demand of consumer, and A moderately price benefits a lot for both users and enterprise.

## 6. Conclusion

There is pasted market we couldn't found any other elements of shoe storage design except emotion and take low concern to the consumers. In order to creating new domain of storage market, we have added new value of storage base on the research and analysis of demand of consumers. Our conclusion is the connotation of emotion and function. Our solutions were mostly like cross environmental concept which could offer good performance in different environment. Emotion combined with function, not only in likes a concept design, but also it provides good movement function when it is worn in different situations. This paper has some limitations in the process of the analysis, in order to design a variety of multi-functional products, we need to introduce a verify research methods in the following research.