

SPECIAL LECTURE

Chairman: Chung-Moon Um (Professor, Seoul National University)
Saturday, May 12 11:00~12:00 (Main hall)

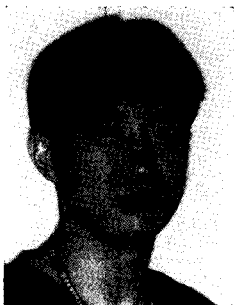


Bonded porcelain veneers revisited

Sun-Jae Kim

Department of Prosthetic Dentistry, Dental College, Yonsei University, Seoul, Korea

Until the late 80' s, porcelain veneers were utilized for slight morphologic changes of anterior teeth i.e. diastemata, peg lateralis and the slightly discolored teeth. The indications of porcelain veneers are becoming increased due to the introduction of enhanced dentin bonding systems. In modern dentistry, the bonded porcelain veneers substitute for many cases of all ceramic candidates. To get a predictable result of bonded porcelain veneers, a clinician should aware of resin-ceramic bonding. In the following lecture, several clinical cases of bonded porcelain veneers will be presented. The step by step procedures and the current concept of resin-ceramic bonding will be also discussed.



연세대학교 치과대학 졸업, 동 대학병원 보철과 수련
연세대학교 치과대학 보철과학교실 석·박사
Fellowship, Graduate Prosthodontics, University of
Washington
연세대학교 치과대학 보철과학교실 조교수