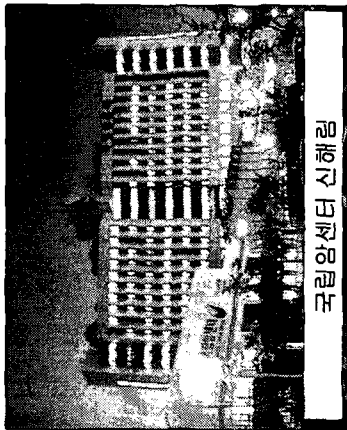


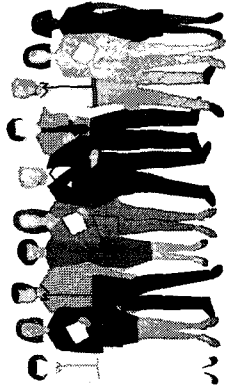
국내 코호트 연구 환경의 현황과 제한점



국립암센터 신해림

April 25, 2003

1. 국내 코호트 연구 환경의 장단점
2. 연구 현황
3. 제한점 - 연구지원과 지속성



April 25, 2003

국내 코호트 연구 환경의 장점

1. 지역사회주민을 대상으로 하는 경우 - 접근의 용이성



April 25, 2003

국내 코호트 연구 환경의 장점

2. 지역사회주민들에게 주어지는 혜택-건강검진?



April 25, 2003

국내 코호트 연구 환경의 장점

3. 추적된 경험 - 10년 이상



April 25, 2003

Advantage of Cohort Follow-up
in Korea

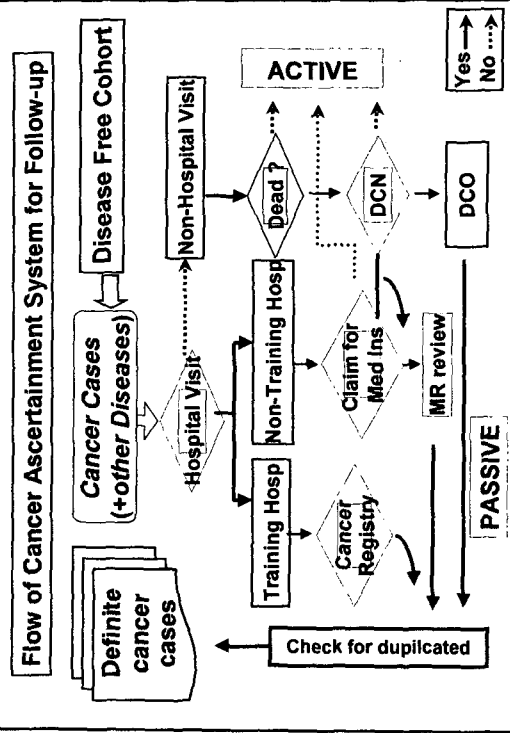
April 25, 2003

국내 코호트 연구 환경의 장점



4. Multi-center collaboration

April 25, 2003



Personal ID Card

Driver's License

주민등록증

730112-19181728

2009. 4. 26.

강상원노 병상사정

국립암센터
Korea Cancer Center

April 25, 2003

Korean Personal Identification No 13 digits

YYMMDD SEX Birth place Register order Random no.

730112-1 8187 2 6

Magic !!

국립암센터
Korea Cancer Center

April 25, 2003

Cohort DB (ID: 2212011894510)

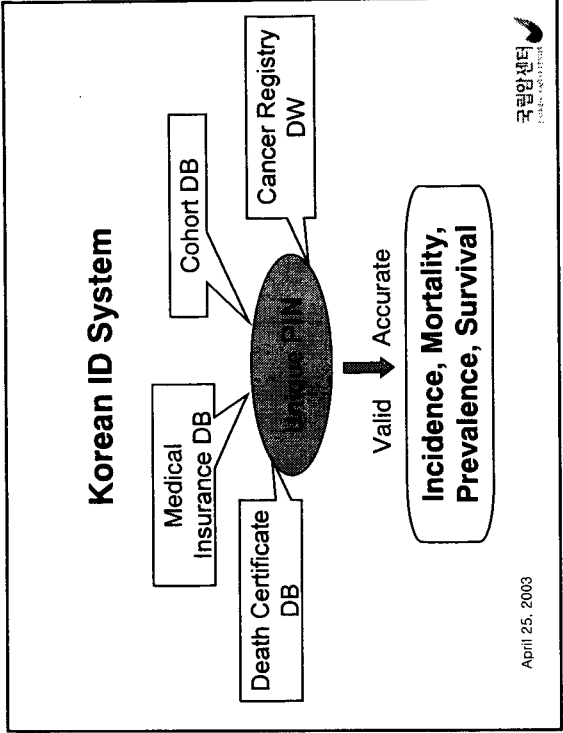
Med Ins DB (ID: 2212011894510)

Death Certificate DB (ID: 2212011894510)

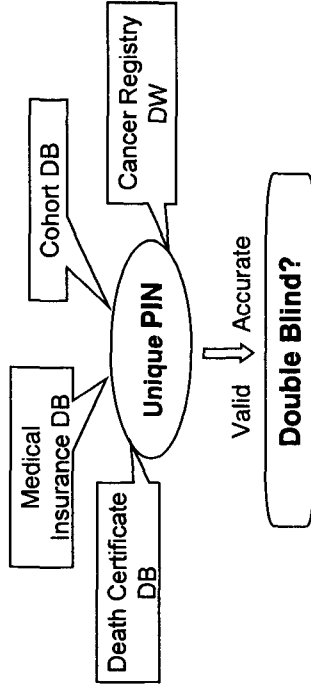
Korea Central Cancer Registry DB (ID: 2212011894510)

국립암센터
Korea Cancer Center

April 25, 2003



Data Base 관리



April 25, 2003

국립암센터
Korea Cancer Center

연구현황- 암 cohort 중심으로

- ❖ Korea Health 21 R&D Project, MOHW '96-'98
- ❖ National Genome Project, NIH 2001-
- ❖ Functional Analysis of Human Genome, KRIBB 2001-
- ❖ Research Project, NCC, Korea 2001-

지역사회주인을 대상으로 생물학적 시료를 장기보관하는 계획을 가진 코호트 연구

April 25, 2003

국립암센터
Korea Cancer Center

Limitations of Cancer Cohort Research in Korea

1. Unconcern of the government toward the cohort study
2. Research fund resources -variability
3. Small sample size per year in several places (even rather long history)
4. Not existing the body of organization and control

April 25, 2003

국립암센터
Korea Cancer Center

Cancer Control Policy

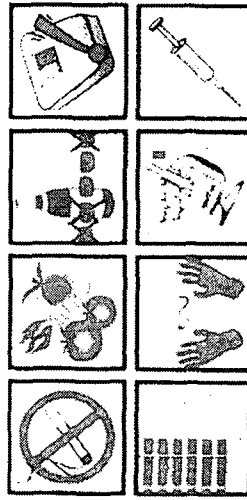
Cancer prevention policy as a component of integrated health promotion and noncommunicable disease prevention policies

April 25, 2003

국립암센터
Korea Cancer Center

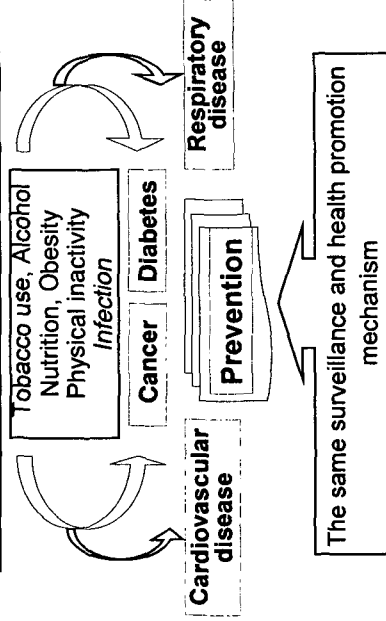
The four principal approaches to cancer control

Prevention Early Detection
 Diagnosis and Treatment Palliative care



April 25, 2003

Risk factors of noncommunicable disease



April 25, 2003

- ❖ Close collaboration among the disease-specific stakeholders
 - to maximize the effectiveness of the available resources
 - to achieve the desired population behavioral changes

- ❖ Regional networks
 - as an important approach to facilitate national programme

April 25, 2003

Future Plan of Cancer Cohort Research in Korea

1. Construct the network for population-based cohort study with biological specimen bank
 - organized by National Institute (ex: NCC)
2. Construct the cohort with 100,000 population participating National Cancer Screening Program

April 25, 2003

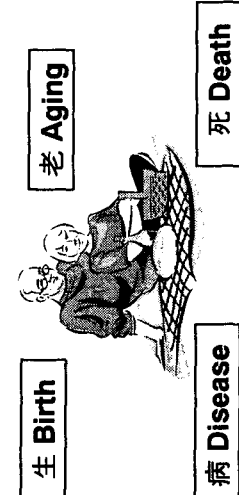
Significance of Biological Materials Bank

- ❖ 개인의 유전정보 유출
- ❖ 윤리적인 문제

국립암센터
Korea Cancer Center

April 25, 2003

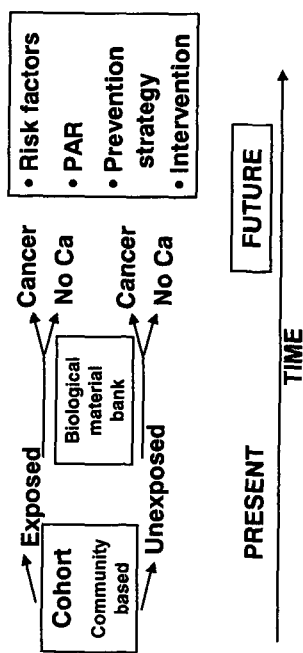
Cohort



국립암센터
Korea Cancer Center

April 25, 2003

Korea Multi-center Cancer Cohort



국립암센터
Korea Cancer Center

April 25, 2003



Thanks a lot for your attention

국립암센터
Korea Cancer Center

April 25, 2003