

Electron Tomography on Microtubule distribution in adult eye of *Drosophila melanogaster*.

Ji Young MUN^a, Kyung Eun Lee^a, Soon Won Lee^a, In Sun Kim^b, and Sung Sik HAN^{a}*

^aLab. of Cell Engineering & 3-D Structure,

Graduate School of Life Sciences and Biotechnology, Korea University

^bDepartment of biology, Keimyung University

The microtubule in drosophila retina move vesicles, granules, organelles like mitochondria. But, their distribution is not cleared yet. To know distribution of microtubule in drosophila retina, we have determined the distribution of gamma-tubulin playing a role in nucleating microtubule growth from the centrosome using confocal microscopy. And correct distribution of microtubule in retinal cells of adult fly was reconstructed as electron tomography.

Electron tomography has been great important to understand biological processes in space. In this study, serial sections of sample fixed by low temperature method were reconstructed as 3-D model. The 3-D structure of retina cells was captured by the IMOD program.

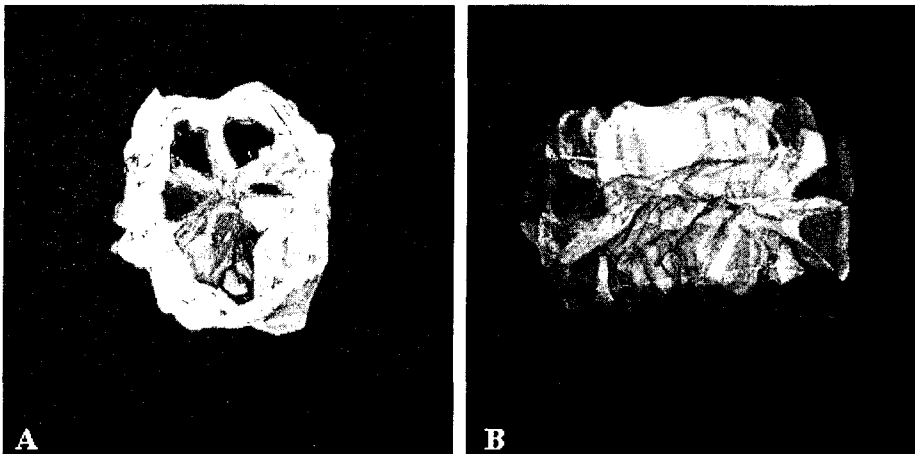


Fig. 1. 3-D structure of ommatidia. Each color represents rhabdomere.

Reference

- Kremer, J. R., Mastronarde, D. N., and McIntosh, J. R. 1996. Computer visualization of three-dimensional image data using IMOD, *J. Struct. Biol.* **116**, 71-76.
- Monaghan, P., N. Perusinghe, and M. Mueller. 1998. High-pressure freezing for immunocytochemistry. *J. Microsc.*, 192 : 248-258
- Perry, M.M. 1968. Further studies on the development of the eye of *Drosophila melanogaster*. *J. Morph.*, 124 : 227-248

Acknowledgements: This work was supported by grant No. R01-2001-000-00344-0 from the Korea science & Engineering Foundation.