

# DEVELOPMENT OF NEW CANCER THERAPY AND ITS PHYSICS

HUNG-KUK OH      JIN-HA JEONG

School of Mechanical and Industrial Engineering, Ajou University  
Soowonsy Wonchondong San 5 442-749 South Korea

## ABSTRACT

Nasucon lamp and Russian ones, which are coated with some special materials on the glass bulb, gave good clinical results for a cancer therapy. They are experimentally studied with Automatic Bioelectric Response Recorder on the six placements of the electrodes (two feet, two hands and two foreheads).

They reduced the current rather than the control (natural) state. However infrared lamp and Chinese God light did not reduced the value current. Hemoglobin in blood, Brown gas,  $Ti_3SiC_2$  and Nasucon have planar crystallizing  $\pi$ -bonding bonding layer and covalent bonding one in sequence commonly and thus the alternating magnetic fields are protected. Nasucon lamp and Russian ones utilized electric bulbs in order to generate alternating magnetic fields and to produce absorbing force.

## 1. EXPERIMENT

### 1-1. EXPERIMENTAL BACKGROUND

Medical doctors are in these days using some special lights for an cancer therapy. The electric bulbs are dressed with special materials according to the diseases. Author also developed a particular bulb dressed with Nasucon, which is made with many kinds of the medical herbs and plants, which are angelicae koreanae radix, phellodendri cortex, platycodi radix, paeoniae radix, angelicae dahuricae radix, cimicifugae rhizoma, gypsum, araliae cordatae radix, anemarrhenae rhizoma, bupleuri radix, aurantii immatri pericarpium, acutellariae radix, massa medicata fermentata, hoelen, atractylodis rhizoma alba, armeniacae semen, angelicae gigantis radix, glycyrrhizae radix, glycyrrhizae radix charcoal powder, acori graminei rhizoma, borneolum and styrax liquides as in Table 1. The Nasucon bulb was treated to a pancreas patient (4 period initial state), who passed two years even though medical doctors said remained three months at that time. She is now living. Domestic doctors imported some bulbs from Russia for a cancer therapy and China for a inflammation therapy. In order to develop more efficient

bulbs on the cancer therapy and verify the physical characteristics of the cancer therapy, scientific measurements are to be done and to be connected with the physics on cancer and its curing.

### 1-2. EXPERIMENTAL PLANNING

Three kinds of experiments will be done for looking for its physics of the therapy. First Nasucon lights are treated to human hands, feet and foreheads. The lights are made by that Nasucon is dressed on the electric bulb. Second Russian lights are done to the feet, hands and foreheads of the patients (RC, ZB, KL and GI). Each light has particular material dressed on the bulb.

Third Chinese God light is used to the foreheads to the testees. The light was developed for the inflammation patients. The test durations were 15 minutes.

### 1-3. EXPERIMENTAL EQUIPMENT

Automatic Bioelectric Response Recorder (ABR) was used for measuring the human body loads. It was manufactured by Korean Maker, MADISON INCORPORATION in Seoul, Seven kinds of measurements have different placement of the electrode each other.

- ① Between right hand and right forehead
- ② Between right forehead and left forehead
- ③ Between left forehead and left hand
- ④ Between left hand and right hand
- ⑤ Between right hand and right foot

⑥ Between right foot and left foot

⑦ Between left foot and left hand

ABR supplies constant voltage of 13 Hz low frequency and then measures electric currents before and after the seven kinds of the loads. The measurements were done two times, and its sequences are ①→②→③→④→⑤→⑥→⑦.

The placements of the electrodes are as in Fig.1

The electric currents before and after the loads are measured in reality by reversing the direction of the current.

The measured currents are used for calculating the following characteristic values of the loads as in Fig.2.

The reactivity at the disconnection from the power source means that a lot of Gibb's free energy can be remained in the bioloads during the electron's flow.

### 1-4. EXPERIMENTAL RESULTS

Fig.3 shows tests of Nasucon lamps by Table 2 through the test sequences

Fig.4 shows tests of Russian lights by Table 3 (test duration 15 min.) through the test sequences

Fig.5 shows tests of Chinese God light by Table 4 (test duration 15 min.) through the test sequences

Chinese God light gives no difference from the natural states. Russian lamps supplies some minus differences from the normal states. Infrared lamps shows some plus differences from the natural states. Nasucon lamps supplies a lot of differences

from the normal states. Because Russian lamps are being used for cancer therapies and if the clinical effect stated in the section 1-1 is considered we can thus say that Nasucon lamps have some possibilities for new cancer therapy and new cancer physics.

## 2. NEW CONCEPT FOR CANCER THERAPY AND ITS PHYSICS

### 2-1. Materials of Absorbing $\pi$ -rays

Some crystal materials absorb  $\pi$ -rays and have particular microstructures.

$Ti_3SiC_2$  has an interesting microstructure like as in Fig.6 (Ref.1).

It has one layer of crystallizing  $\pi$ -bonding and the other layer of covalent bondings.

The crystallizing  $\pi$ -bonding layer can have an alternating magnetic field because it has not interrupting perpendicular alternating magnetic fields.

Brown gas also has two layers, one is the one of O-H crystallizing  $\pi$ -bonding layer and the other is the one of H=H covalent bonding like as Fig.7(Ref.2).

Hemoglobins in blood also have two layers, the one is hemoglobin layer the other is water layer like as Fig.8(Ref.3).

The red corpuscle in blood can produce  $\pi$ -rays through hemoglobin microstructure like as Fig.9(Ref.4).

Nasucon is a mixture of crystallizing  $\pi$ -bonding crystal layers and covalent bonding layers and thus it makes alternating magnetic fields and an absorbing force

through producing  $\pi$ -rays, which shows telepathy(Ref.5) .

The absorbing force induces human mind concentrated on a specific object or frequency.

### 2-2. Cancer Physics and Principle of Nasucon Lamp and Russian Lamps

Fig.10 shows the path for the signal of the epidermal growth factor in the human cell. Cancer cell absorbs abnormal signals in the path and then continues its proliferation (Ref.6).

The abnormal signals are produced through any abnormal crystallizing  $\pi$ -bonding layers in the normal living structures.

New concept for cancer therapy is to absorb the abnormal signals from outside with Nasucon lamp.

The principle of Nasucon lamp is to utilize the crystallizing  $\pi$ -bonding layer of Nasucon and then generate absorbing force through the production of  $\pi$ -rays as in Fig.11.

Nasucon Layer on the glass of the lamp generates alternating magnetic fields through the planar crystallizing  $\pi$ -bondings between covalent bondings of air layer and glass one.

The lamp lights are changed into the  $\pi$ -rays through the alternating magnetic fields of the crystallizing  $\pi$ -bondings in Nasucon layer (Ref.7). The covalent bonding layers do not interrupt the alternating magnetic fields by eliminating any unusable crystallizing  $\pi$ -bonding structures.

The absorbing force is generated through the production of the  $\pi$ -rays from the lights. The principle of Russian lamps is the same as the one of Nasucon lamp.

The effect of the absorbing force is according to the quality of the crystallizing  $\pi$ -bonding in any material.

If the Nasucon layer is contacted to any other material the produced  $\pi$ -rays may be transferred to it if that is potentially lower. Nasucon layer can be used to control the flow of human bioenergy therefore.

### 3. CONCLUSION

- ① In the experimental study infrared light increases the activity, Nasucon light reduces it, Russian lights reduces it, Chinese God light has no difference from natural state.
- ② Nasucon and Russian lights may be used for cancer therapy because they absorb the activity ( $\pi$ -rays).
- ③ Hemoglobin in blood, Brown gas,  $Ti_3SiC_2$  and Nasucon have planar crystallizing  $\pi$ -bonding layer and covalent bonding one in sequence commonly and thus the alternating magnetic fields are protected.
- ④ Nasucon lamp and Russian lamps utilized electric bulbs in order to generate alternating magnetic fields and to produce absorbing force.
- ⑤ Nasucon layer can be used to control the flow of human bioenergy.

### REFERENCES

1. K. H. KISI, f. A. A. CROSSLEY, S. MYHRA and M. W. BARSOUM, "STRUCTURE AND CRYSTAL CHEMISTRY OF  $Ti_3SiC_2$ ", J. Phys. Chem. Sol. V59 n9 P1437 Sep-98
2. HUNG-KUK OH, "Some Comments on Implosion and Brown Gas", Journal of Materials Processing Technology 95(1999) 8-9
3. Ruth Bernstein, Stephen Bernstein, "Biology" Wm C. Brown Publishers, 1996 page 356
4. HUNG-KUK OH, "A Visualization of  $\pi$ -visible rays and Generation of Life" Proceedings of Korean Society for Cognitive Science, May 27 2000 Page 76-86
5. HUNG-KUK OH, "TELEPATHY ACUPUNCTURE", Proceedings of Society of Applied Micromagnetic Energy, page 85-94 1998 December Seoul Korea
6. HUNG-KUK OH, "Physics on Cancer and Its Curing", Proceedings of the 2000 Fall Conference of Korean Society for Emotion and Sensibility page 91-97
7. HUNG-KUK OH, "Electromagnetic Wave and Rotating", Advance Program of the Optical Society of Korean Annual Meeting 2001 page 124~125

NO.	CONSTITUENTS	WEIGHTS
1	Angelicae Koreanne Radix	100
2	Phellodendri Cortex	100
3	Platycodi Radix	100
4	Paeoniae Radix	100
5	Angelicae Dahuricae Radix	100
6	Cimicifugae Rhizoma	100
7	Gypsum	100
8	Araliae Cordatae Radix	100
9	Anemarrhenae Rhizoma	100
10	Bupleuri Radix	100
11	Aurantii Immatri Pericarpium	100
12	Saetellariae Radix	100
13	Massa Medicata Fermenteta	100
14	Hoelen	100
15	Atractylodis Rhizoma Alba	100
16	Armeniacae Semen	100
17	Angelicae Gigantis Radix	100
18	Glycyrrhizae Radix	100
19	Charcoal Power	100
20	Acori Graminei Rhizoma	10
21	Borneolum	10
22	Styrax Liquidus	10

Table 1 Constituents of Nasucon

Testee Test sequence	Jin-Ha Jeong(75 born/male) (J)	Ja-Sung Ku (76 born/male) (K)
1	Control	Control
2	Infrared Lamp	×
3	Nasucon Infrared Lamp.feet	Nasucon Infrared Lamp.hand
4	Nasucon Infrared Lamp.forehead	Nasucon Infrared Lamp.forehead

Table 2 Tests of Nasucon Lamps (test duration 15 min.)

Testee Test sequence	Jin-Ha Jeong(born 75/male) (J)	Ja-Sung Ku (born 76/male) (K)
1	Control	Control
2	RC (hands + feet)	KL (hands + feet)
3	ZB (hands + feet)	GI (hands + feet)
4	KL (hands + feet)	RC (hands + feet)
5	GI (hands + feet)	ZB (hands + feet)

Table 3 Tests of Russian lights (test duration 15 min.)

Testee Test sequence	Hung-Kuk Oh (52 born/male) (O)	Jin-Ha Jeong (75 born/male) (J)
1	Control	Control
2	God light (forehead)	God light (forehead)

Table 4 Tests of Chinese God light (test duration 15 min.)

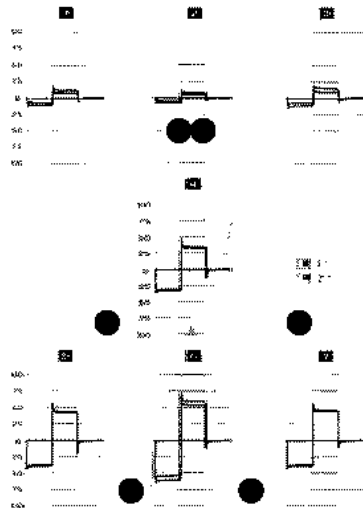


Fig.1 Placements of the Electrodes of ABR in Human Body

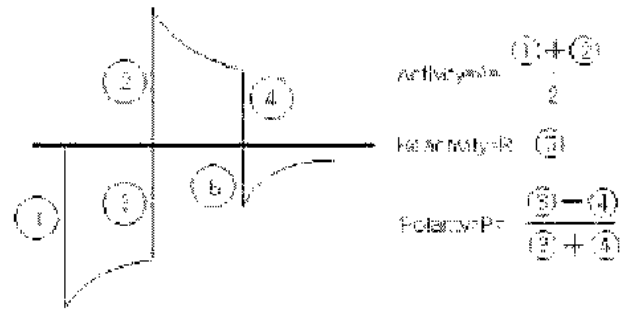
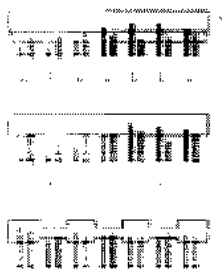


Fig.2 Activity, Reactivity and Polarity of the Loads

**Jin-Ha Jeong**

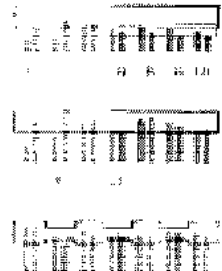
2-1. Female  
1980.12.11 AM 10:30



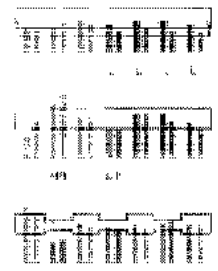
2-2. Female 2000.11.15 AM 10:30



2-3. Female 1980.01.15 AM 11:30

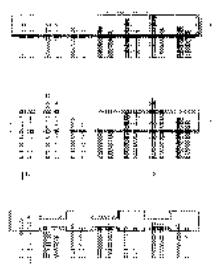


2-4. Female 1980.01.15 AM 11:30

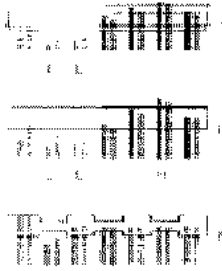


**Ja-Sung Ku**

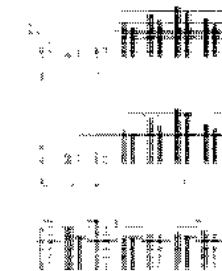
2-5. Female  
1980.01.15 AM 11:30



2-6. Female 1980.01.15 AM 11:30



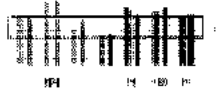
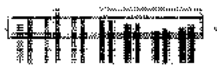
2-7. Female 1980.01.15 AM 11:30



# Jin-Ha Jeong

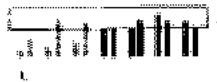
4-1. 4번곡

(2000년 12월 14일)



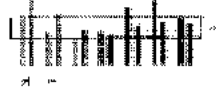
4-5. 4번곡 (2)

(2000년 12월 14일)



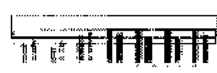
4-2. 4번곡 (2)

(2000년 12월 14일)



4-3. 4번곡 (3)

(2000년 12월 14일)



4-4. 4번곡 (4)

(2000년 12월 14일)



# Ja-Sung Ku

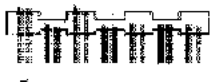
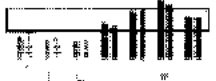
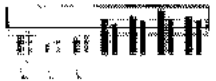
4-6. 4번곡

(2000년 12월 14일)



4-7. 4번곡 (2)

(2000년 12월 14일)



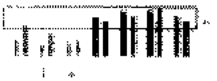
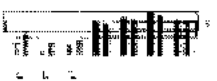
4-8. 4번곡 (3)

(2000년 12월 14일)



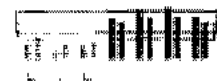
4-9. 4번곡 (4)

(2000년 12월 14일)



4-10. 4번곡 (5)

(2000년 12월 14일)



### Hung-Kuk Oh

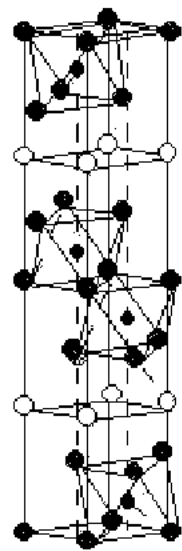
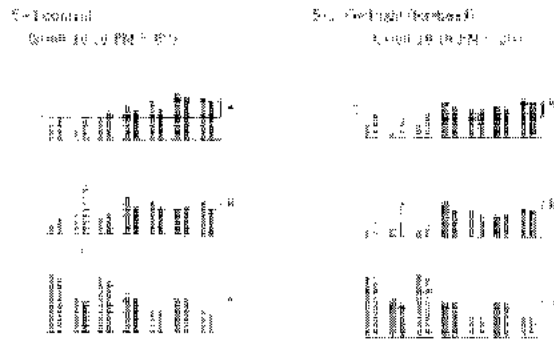


Fig.6 Microstructure of  $Ti_3SiC_2$

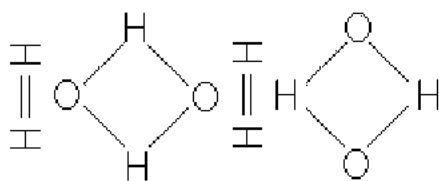


Fig.7 Microstructure of Brown Gas

### Jin-Ha Jeong

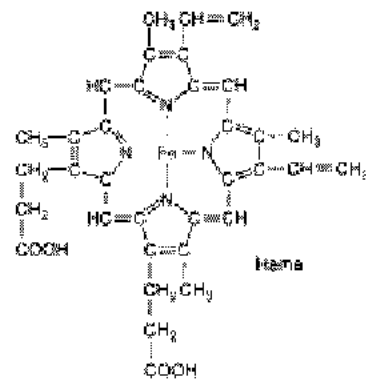
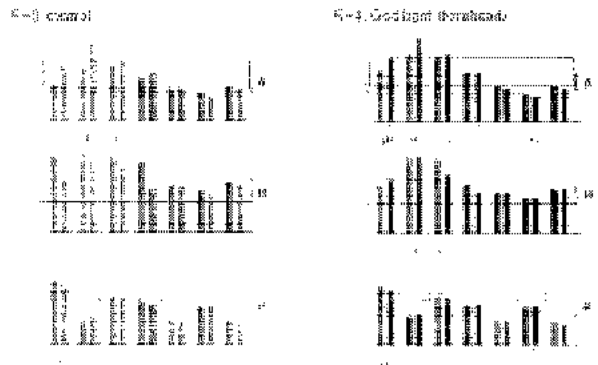


Fig.8 Microstructure of blood

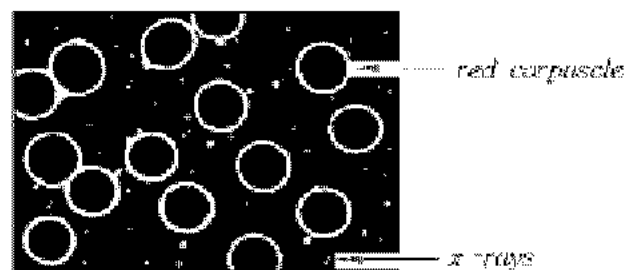


Fig.9 Production of  $\Pi$  -rays through red corpuscles in blood





Fig.10 The Path for the Signal of the Epidermal Growth Factor in Human Cell

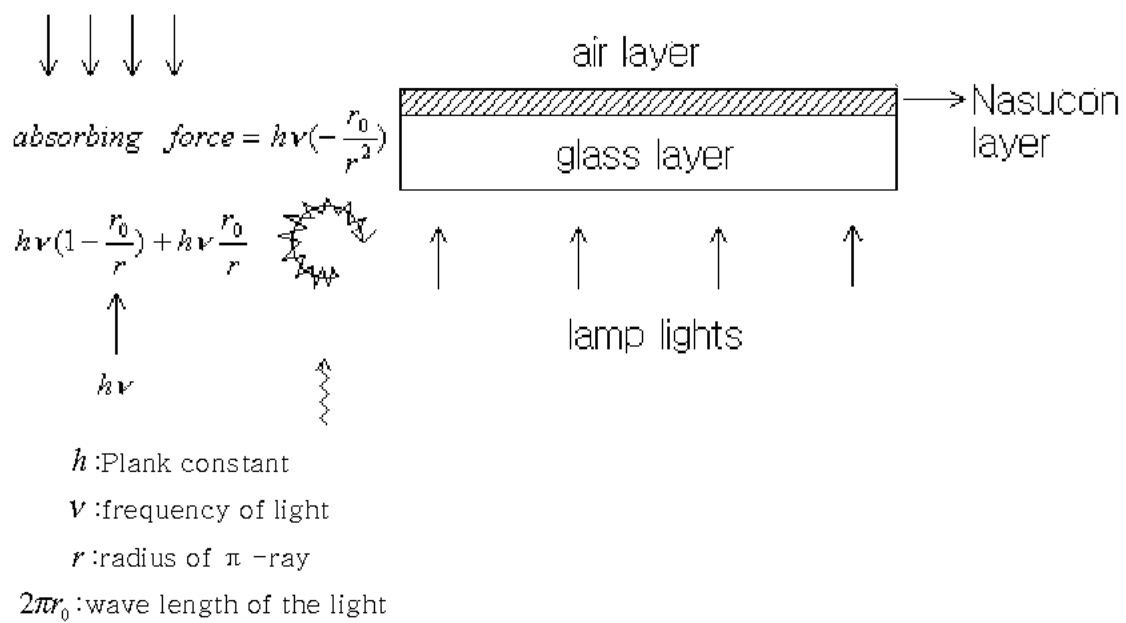


Fig.11 Generation of Absorbing Force Through Nasucon Lamp