

A Critical Note on the Electric Field in Direct and Alternating Current and Its Consciousness

Hung-Kuk Oh

School of Mechanical and Industrial Engineering
Ajou University, Suwon Korea 442-749

Abstract

The conventional model did not take momentum conservation into consideration when the electron absorbs and emits the photons. π -ray provides momentum conservations on any directions of the entering photons, and also the electrons have radial momentum conservations and fully elastic bouncing between two atoms, in the new atom model. Conventional atom model must be criticized on the following four points.

(1) Natural motions between positive and negative entities are not circular motions but linear going and returning ones, for examples sexual motion, tidal motion, day and night etc. Because the radius of hydrogen atom's electron orbit is the order of 10^{-11}m and the radii of the nucleons in the nucleus are the order of 10^{-14}m and then the converging π -gamma rays to the nucleus have so great circular momentum, the electron can not have a circular motion. We can say without doubt that any elementary mass particle can have only linear motion, because of the π -rays' hindrances, near the nucleus.

(2) Potential energy generation was neglected when electron changes its orbit from outer one to inner one. The $h\nu$ is the kinetic energy of the photo-electron. The total energy difference between orbits comprises kinetic and potential energies.

(3) The structure of the space must be taken into consideration because the properties of the electron do not change during the transition from outer orbit to inner one even though it produces photon.

(4) Total energy conservation law applies to the energy flow between mind and matter because we daily experiences a interconnection between mind and body.

Conventional Concept of Electric Field must be extended in the case of the direct and alternating current. Conventional concept is based on coulomb's force while the electric potential in the direct and alternating current is from Gibb's free energy. And also conventional concept has not any consciousness with human being but the latters has a conscious sensibility.

The cell emf is from the kinetic energy of the open π -rays flow through the conducting wire. The electric

potential in alternating current is from that the trans-orbital moving of the induced change of magnetic field in the wire produces flows of open π -rays, which push the rotating electrons on the orbital and then make the current flow. Human consciousness can induce a resonance with the sensibility of the open π -rays in the electric measuring equipment. Specially treated acupunctures with Nasucon is for sending an acupunctural effect from one place to another via space by someone's will power.

Key words: Open π -ray, electric field, consciousness

1. DEFINITION OF CONVENTIONAL ELECTRIC FIELD

Coulomb's law is that the magnitude of the force of interaction between two point charges is directly proportional to the product of the charges and

$$F = \frac{1}{4\pi\epsilon_0} \frac{|q_1q_2|}{r^2} \quad \text{----- (1)}$$

where F : Coulomb's force

ϵ_0 : Permittivity of free space

r : Distance between two charges q_1 and q_2

Force is a vector quantity, so electric field is also a vector quantity. To define the electric field E at any point, we place a test charge q at the point and measure the electric force F on it, we define E at this point to be equal to F divided by q_2 .

$$E = \frac{F}{q_2} \quad \text{----- (2)}$$

Using the unit vector r , we can write a vector equation that gives both the magnitude and direction of the electric field as in Fig.1.

$$E = \frac{1}{4\pi\epsilon_0} \frac{q_1}{r^2} r \quad \text{----- (3)}$$

By definition the electric field of a point charge always points away from a positive charge but toward

inversely proportional to the square of the distance between them[Ref.1].

a negative charge.

2. THE ELECTRIC FIELD IN DIRECT CURRENT

If the cell reaction involves n electrons, the relation is [Ref.2]

$$nF\epsilon \leq -\Delta G \quad \text{----- (4)}$$

where F : Faraday's constant,

ϵ : cell potential

ΔG : Gibb's free energy change

Observation shows that the value of ϵ depends on the current drawn in the external current.

The limiting value of ϵ measured as the current goes to zero is called the electro-motive force of the cell (the cell emf) or the reversible cell potential, ϵ_{rev} :

$$\lim_{I \rightarrow 0} \epsilon = \epsilon_{rev}$$

I : current

Then Eq.(4) becomes

$$nF\epsilon_{rev} = -\Delta G \quad \text{----- (5)}$$

We see that the cell emf is proportional to(- $\Delta G/n$) the decrease in Gibbs energy of the cell reaction per electron transferred. The cell emf is therefore an intensive property of the system. The spontaneity of a reaction can be judged by the corresponding cell potential.

ΔG	ϵ	Cell reaction is
-	+	Spontaneous
+	-	Nonspontaneous
0	0	At equilibrium

The cell emf is due to the flow of the open π -rays from minus pole to plus one. The Gibb's free energy is kinetic energy part of the open π -ray, which pushed the electron. Conventional electric potential is from coulomb force of the charges while this cell emf is from the kinetic energy of the open π -rays' flow through the conducting wire.

The open π -rays are produced when a crystal structure changes to liquid solution in minus pole and then they are used for crystallizing of liquid solution in plus pole[Ref.3].

3. THE ELECTRIC FIELD IN ALTERNATING CURRENT(FARADAY'S LAW)

Faraday had the insight to perceive that the change in the flux Φ_B for the left coil in Fig.2 is the important common factor of magnetic induction. This flux may be set up by a far magnet or a current loop. Faraday's law of induction says that the induced emf ϵ in a circuit is equal to the negative rate at which the flux through the circuit is changing.

Fig.3 shows that trans-orbital moving of electrons is induced by any change of magnetic flux. Because both clockwise and counter-clockwise rotating electrons in the orbital have same numbers, the resultant magnetic flux is zero. But if any magnetic flux is loaded in the loop of the coil the magnetic flux outside the wire will be unbalanced and this produces induced current. The induced current reproduces an induced magnetic flux. Finally the external magnetic field becomes zero (Ref.4). It also automatically satisfies the Lenz's law that the induced current appears in such a direction that it opposes the change of the flux that produced it.

$$\Phi_B = \int B \cdot dA$$

(magnetic flux through area A) ----- (6)

$$\epsilon = -\frac{d\Phi_B}{dt} \text{ (Faraday's Law) ----- (7)}$$

The trans-orbital moving of the induced magnetic field in Fig.3 produces any flows of open π -rays[Ref.5], which push the rotating electrons on the orbital to the next one, and then make the current flow. The flow of the Gibb's free energy by the change of magnetic flux is calculated by equation(4).

The frequency of the Gibb's free energy($h\nu$) can be calculated by the microstructure of the conducting wire and the implosivity $\left(\frac{r_0}{r}\right)$ [Ref.6] can be calculated by the flowing equation

$$nF\epsilon = \Delta G = 2nh\nu\left(1 - \frac{r_0}{r}\right) \text{ ----- (8)}$$

where h is plank constant and $\left(\frac{r_0}{r}\right)$ is implosivity of the open π -ray and also two π -rays are produced per the induced electron[Ref.7].

4. CONCIOUSNESS OF OPEN π -RAYS AND ELECTRIC MEASURMENT

4.1. UNIVERSAL ATTRACTION AND ITS SENSIBILITY

An electro-magnetic wave with an characteristic wave length may take two kinds of open π -rays as in Fig.4, in which each open π -ray has following properties according to linear lever rule

$$\text{Static mass} = 0 \quad \text{----- (9)}$$

$$\text{momentum} = \frac{h\nu}{c} \left(1 - \frac{r_0}{r}\right) \quad \text{----- (10)}$$

$$\text{kinetic energy} = h\nu \left(1 - \frac{r_0}{r}\right) \quad \text{----- (11)}$$

, where h is Plank constant, ν is its frequency, c is its velocity, $2\pi r_0$ is its wave length and r is its radius. Because open π -ray has momentum and energy its wave function may be mathematically described for a quantum mechanical approach.

The potential energy of the open π -ray is

$$V = h\nu \frac{r_0}{r} \quad \text{----- (12)}$$

The universal attraction from the open π -ray will be

$$F_r = h\nu \left(-\frac{r_0}{r^2}\right) = h\nu \left(\frac{r_0}{r}\right) \left(-\frac{1}{r}\right)$$

We see that F_r is a function of ν and $\left(\frac{r_0}{r}\right)$.

The attraction between open π -rays is sensible to the

ratio $\left(\frac{r_0}{r}\right)$ and the frequency.

Special relativity states that mass, length and time are the function of the ratio between coordinate velocity and photon's one because the photon's velocity is finite and the velocity of the fundamental entity in the mass is the photon's one.

General relativity says that accelerations have no difference from any reference coordinates. It means that the velocity of the force wave is infinite and then the ratio between coordinate velocity and force wave velocity does not influence the acceleration mass[Ref.8].

We already know that universal attraction is only function of radial distance from the center of the π -ray. This means that the velocity of the force wave is infinite in the wave equation. We can transfer the force wave into a concentrated area with mind control because open π -ray has its sensibility.

4.2. CONSCIOUS ELECTRIC MEASUREMENT

Human consciousness can induce a harmonious resonance with the the sensibility of the open π -rays in the electric measuring equipment.

Quantum Resonance Spectrometer, for example, is looking for a resonance between the data indication and input signal from the specimen through human consciousness(Fig.5)[Ref.9]. The resonant sensibility can be appeared as a characteristic electric potential (or a characteristic Gibb's free energy).

4.3. BASIC MEASURMENTS FOR DEVELOPING PSYCHO-COMMUNICATION EQUIPMENT

Psycho-physics acupuncture is a method for sending an acupunctural effect from one place to another via space by someone's will power as in Fig.6, Fig.7, Fig8 and Fig.9. Specially treated acupunctures with Nasucon, which is made with many kinds of medical herbs and plants, are put into the acupunctural points on the pictured(as sketched) hands, ears or any parts of the human body. The acupunctural effects were measured by Electro-Dermal Screening Device, Yang Do Rak, Pulsimeter and ABR2000.

From the related theory and the experiments it is seen that psycho-communication is a planar movement of the open π -rays by force wave and dismantling between two electric fields of sender and receiver.

After the psycho-physics acupuncture the activities for the receivers become much more increased than before the psycho-communication while the ones for the sender augment slightly.

5. CONCLUSIONS

- (1) Conventional electric potential is from coulomb's force of the charges while the cell emf is from the kinetic energy of the open π -rays' flow through the conducting wire.
- (2) The electric potential in alternating current is now that the trans-orbital moving of the induced change of magnetic field in the wire produced flows of open π -rays, which push the rotating electrons on the orbital and then make the current flow.
- (3) Human consciousness can induce a resonance with the sensibility of the open π -rays in the electric measuring equipment.

- (4) Specially treated acupunctures with Nasucon is for sending an acupunctural effect from one place to another via space by someone's will power.

REFERENCES

1. DAVID HALLIDAY, "FUNDAMENTALS OF PHYSICS EXTENDED", JOHN WIELEY and SONS INC. 1997 page 554~557
2. P.W. ATKWS, "GENERAL CHEMISTRY", W. H FREEMAN AND COMPANY 1989 page 752~758
3. H.K.OH, "PI-RAY SCIENCE", THE AJOU UNIVERSITY PRESS 1997 page 5~10
4. HUNG-KUK OH, "Laws of Electromagnetics and Three-Dimensional Crystallizing Combined Π -bonding Orbitals", 1994 Proceedings of the 18th Workshop on High Temperature Superconductivity, South Korea page 146~150
5. HUNG-KUK OH, "MAGNET, MAGNETIC FIELD AND CIRCULATION OF Π -RAYS", THE AJOU UNIVERSITY PRESS 1997 page 505-516
6. HUNG-KUK OH, "Dynamics of Open Π -rays(Meta physics) and closed Π -rays", Proceeding of the 2000 Spring Conference of KOSES and International Sensibility Ergonomics Symposium page 39-46
7. HUNG-KUK OH, "PSYCHO-PHYSICS", BULLETIN OF THE KOREAN PHYSICAL SOCIETY 2000 Vol. 18-1 page 230
8. Arthur Beiser, "General Relativity", CONCEPTS OF MODERN PHYSICS McGraw-Hill Inc. 1995 page 32~36
9. HUNG-KUK OH, "TRANSFORM BETWEEN

II-RAY AND ELECTRIC
 CURRENT(PRINCIPLE OF QUANTUM
 RESONANCE SPECTROMETER)", II-RAY,
 THE AJOU UNIVERSITY PRESS 1997 page
 36-51

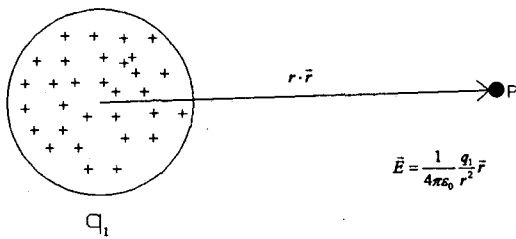


Fig.1 Definition of Electric Field

10. HUNG-KUK OH, "Basic Measurements for
 Developing Psycho-Communication Equipment",
 Proceedings of Korean Society of Brain Research
 JUNE 2000 page 56

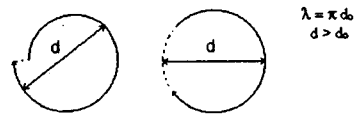


Fig.4. Dimensions of Open II-Ray

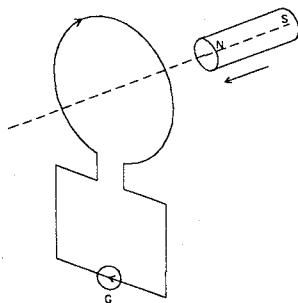


Fig.2 Galvanometer G deflects which the magnets is moving while the magnet is moving with respect to the coil

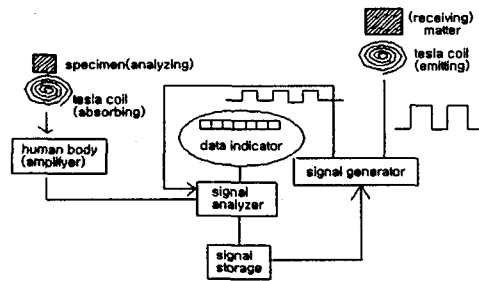


Fig.5 System components of QRS

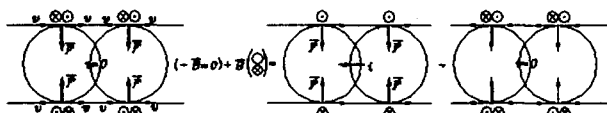


Fig.3 Trans-orbital moving of electrons induced by any change of magnetic flux(Faraday's law of induction)

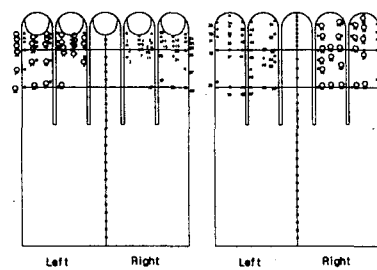


Fig.6 Kyunhyul points of the hands

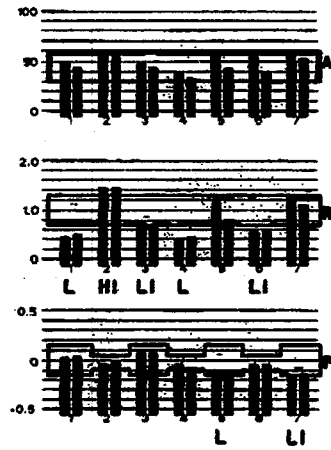


Fig.7 Hand acupunctures treated with Nasucon Liquid
 (Nasucon Acupunctures)

Fig.9 First and Second Measurements

After the Psycho-physics acupuncture
 (Receiver: HUNG-KUK OH) (Sender: EUN-
 SOOK PARK, SUN-MYUNG KIM and HYE-
 JU ANN)

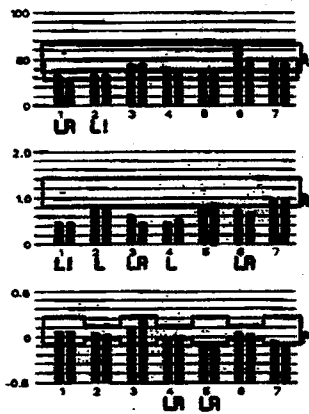


Fig.8 First and Second Measurements

Before the Psycho-physics acupuncture
 (Receiver: HUNG-KUK OH) (Sender: EUN-
 SOOK PARK, SUN-MYUNG KIM and HYE-
 JU ANN)