

Sliding Mode Fuzzy Control 을 사용한 바람에 의한 대형 구조물의 진동 제어

김상범 · 윤정방

한국과학기술원 토목공학과

Sliding Mode Fuzzy Control for Wind Vibration Control of Tall Building

Saang Bum Kim AND Chung Bang Yun

Department of Civil Engineering, Korea Advanced Institute of Science and Technology, Taejon 305-701, Korea

KEY WORDS: Structural Control 구조진동제어, Wind Vibration 바람에 의한 진동, Sliding Mode Control, Fuzzy Control, Disturbance Estimation 외란 예측

ABSTRACT: A sliding mode fuzzy control (SMFC) with disturbance estimator is applied to design a controller for the third generation benchmark problem on a wind-excited building. A distinctive feature in vibration control of large civil infrastructure is the existence of large disturbances, such as wind, earthquake, and sea wave forces. Those disturbances govern the behavior of the structure, however, they cannot be precisely measured, especially for the case of wind-induced vibration control. Since the structural accelerations are measured only at a limited number of locations without the measurement of the wind forces, the structure of the conventional control may have the feed-back loop only. General structure of the SMFC is composed of a compensation part and a convergent part. The compensation part prevents the system diverge, and the convergent part makes the system converge to the sliding surface. The compensation part uses not only the structural response measurement but also the disturbance measurement, so the SMFC has a feed-back loop and a feed-forward loop. To realize the virtual feed-forward loop for the wind-induced vibration control, disturbance estimation filter is introduced. The structure of the filter is constructed based on an auto regressive model for the stochastic wind force. This filter estimates the wind force at each time instance based on the measured structural responses and the stochastic information of the wind force.

For the verification of the proposed algorithm, a numerical simulation is carried out on the benchmark problem of a wind-excited building. The results indicate that the present control algorithm is very efficient for reducing the wind-induced vibration and that the performance indices improve as the filter for wind force estimation is employed.

1. INTRODUCTION

Vibration control of a large civil infrastructure generally involves large external disturbances, such as wind, earthquake, and sea wave forces. The structural responses are mainly influenced by the external load, and the control force only works as a small modifier. However many control algorithms can not directly utilize the characteristics of the environmental loading, and the algorithms take the loading as unknown disturbance only. Sliding mode fuzzy control (SMFC) is one of the nonlinear and intelligent control methods, which may consider the external load data directly. For the case of wind vibration control, however, it is very difficult to precisely measure the wind forces on a large-scale structure. To overcome the above difficulty, the disturbance estimation filter is introduced to the SMFC. This filter generates a wind force vector based on the measured signal, and the controller produces a control signal using the measured signal and the estimated wind force. The proposed SMFC with disturbance estimation filter is applied to the benchmark problem for response control of a wind-excited tall

building, which was formulated by Yang *et al.* (1998). The results from the numerical simulation study indicate that the present control algorithm is very efficient for reducing the wind-induced vibration.

2. MODEL OF CONTROL SYSTEM

2.1 Modeling of Structure

Referring to a building structure for a benchmark problem of wind vibration control as in Figure 1, the dynamic behavior of the structure with a control device can be modeled as

$$\mathbf{M}_s \ddot{\mathbf{y}}_s(t) + \mathbf{C}_s \dot{\mathbf{y}}_s(t) + \mathbf{K}_s \mathbf{y}_s(t) = \mathbf{f}_s(t) + \mathbf{B}_s \mathbf{u}_s(t) \quad (1)$$

where $\mathbf{y}_s(t)$, $\mathbf{f}_s(t)$, and $\mathbf{u}_s(t)$ = displacement, wind force, and control force vectors; \mathbf{M}_s , \mathbf{C}_s , and \mathbf{K}_s = mass, damping,

and stiffness matrices; and \mathbf{B}_s = boolean matrix representing the effects of the control force. By converting into a state space form and selecting appropriate control and measurement variables, the following state and measurement equations can be obtained

$$\begin{aligned}\dot{\mathbf{x}}(t) &= \mathbf{A}\mathbf{x}(t) + \mathbf{B}_u\mathbf{u}_s(t) + \mathbf{B}_f\mathbf{f}_s(t) + \mathbf{B}_w\mathbf{w}(t) \\ \mathbf{y}_c(t) &= \mathbf{C}_c\mathbf{x}(t) + \mathbf{D}_{cu}\mathbf{u}_s(t) + \mathbf{D}_{cf}\mathbf{f}_s(t) + \mathbf{D}_{cw}\mathbf{w}(t) \quad (2) \\ \mathbf{y}_m(t) &= \mathbf{C}_m\mathbf{x}(t) + \mathbf{D}_{mu}\mathbf{u}_s(t) + \mathbf{D}_{mf}\mathbf{f}_s(t) + \mathbf{D}_{mw}\mathbf{w}(t) + \mathbf{v}(t)\end{aligned}$$

where $\mathbf{x}(t)$, $\mathbf{y}_c(t)$, $\mathbf{y}_m(t)$, $\mathbf{w}(t)$, and $\mathbf{v}(t)$ = state, control signal, measured signal, un-modeled error, and measurement noise vectors; and \mathbf{A} , \mathbf{B}_u , \mathbf{B}_f , \mathbf{B}_w , \mathbf{C}_c , \mathbf{D}_{cu} , \mathbf{D}_{cf} , \mathbf{D}_{cw} , \mathbf{C}_m , \mathbf{D}_{mu} , \mathbf{D}_{mf} , and \mathbf{D}_{mw} = system matrices.

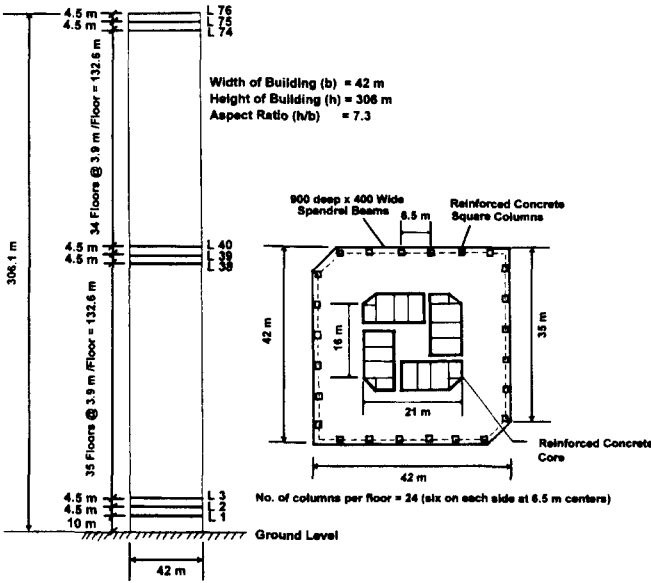


Figure 1. Structure for Benchmark Problem of Wind Vibration Control

2.2 Model Reduction and State Observer

Before designing the controller, two stages of pre-design were carried out. The first stage is for model reduction. For the computational efficiency, the control law is designed based on a reduced model obtained using the balanced truncation method. The state space system is transformed into a balanced system, of which the controllability and observability Gramians are diagonal and identical. Then taking the largest Hankel singular values, a reduced-order system is obtained. The second stage is for design of observer. The Kalman-Bucy filter is used to estimate the state from the measured signal as (Goodwin & Sin 1984)

$$\begin{aligned}\dot{\hat{\mathbf{x}}}_r &= \mathbf{A}_r\hat{\mathbf{x}}_r(t) + \mathbf{B}_{ru}\mathbf{u}_s(t) \\ &+ \mathbf{L}_{obs}(\mathbf{y}_m(t) - \mathbf{C}_{mr}\hat{\mathbf{x}}_r(t) - \mathbf{D}_{mru}\mathbf{u}_s(t))\end{aligned} \quad (3)$$

where $\hat{\mathbf{x}}_r$ = estimated state vector; and $\mathbf{L}_{obs} = (\mathbf{P}_{obs}\mathbf{C}_{mr}^T + \mathbf{B}_{rw}\mathbf{S}_{obs}^T)\mathbf{R}_{obs}^{-1}$ = observer gain matrix. The

observer gain matrix can be obtained by solving the following algebraic Riccati equation for \mathbf{P}_{obs}

$$\begin{aligned}\bar{\mathbf{A}}_r\mathbf{P}_{obs} + \mathbf{P}_{obs}\bar{\mathbf{A}}_r^T - \mathbf{P}_{obs}\mathbf{C}_{mr}^T\mathbf{R}_{obs}^{-1}\mathbf{C}_{mr}\mathbf{P}_{obs} \\ + \mathbf{B}_{rw}\mathbf{Q}_{obs}\mathbf{B}_{rw}^T - \mathbf{B}_{rw}\mathbf{S}_{obs}\mathbf{R}_{obs}^{-1}\mathbf{S}_{obs}^T\mathbf{B}_{rw}^T = \mathbf{0}\end{aligned} \quad (4)$$

where

$$\begin{aligned}\bar{\mathbf{A}}_r &= \mathbf{A}_r - \mathbf{C}_{mr}^T\mathbf{R}_{obs}^{-1}\mathbf{S}_{obs}^T\mathbf{B}_{rw}^T \\ \begin{bmatrix} \mathbf{Q}_{obs} & \mathbf{S}_{obs} \\ \mathbf{S}_{obs}^T & \mathbf{R}_{obs} \end{bmatrix} \delta(\tau) &= E \left[\begin{bmatrix} \mathbf{w}_r(t) \\ \mathbf{v}_r(t) \end{bmatrix} \begin{bmatrix} \mathbf{w}_r(t) \\ \mathbf{v}_r(t) \end{bmatrix}^T \right]\end{aligned}$$

3. DISTURBANCE ESTIMATION FILTER FOR WIND FORCE

3.1 Stochastic Model for Wind Force

The stochastic wind force $\mathbf{f}_s(s)$ can be modeled by its spectral density function as (Jin *et al.* 1998)

$$\mathbf{f}_s(s) = \mathbf{H}_{fw}(s)\mathbf{w}_f(s) \quad (5)$$

where $\mathbf{S}_{f_s}(\omega) = \bar{\mathbf{H}}_{fw}(j\omega)\mathbf{H}_{fw}(j\omega)^T$; $\mathbf{S}_{f_s}(\omega)$ = spectral density matrix of wind force; \mathbf{w}_f = white noise source with unit intensity; and $\mathbf{H}_{fw}(s)$ = transfer function. Figure 2 shows power spectral density functions of the wind force fluctuations at various nodes along the building. The transfer function model can be converted into a following discrete auto-regressive with auxiliary input (ARX) model as (Ljung 1987)

$$\mathbf{f}_s[k+1] = \mathbf{A}_{fd}\mathbf{f}_s[k] + \mathbf{B}_{fd}\mathbf{w}_f[k] \quad (6)$$

where \mathbf{A}_{fd} and \mathbf{B}_{fd} = ARX coefficient matrices ($\mathbf{H}_{fw}(z) \approx (z\mathbf{I} - \mathbf{A}_{fd})^{-1}\mathbf{B}_{fd}$). The AR matrix \mathbf{A}_{fd} is obtained by minimizing the mean squares of estimation error, while \mathbf{B}_{fd} is taken as an identity matrix.

3.2 Disturbance Estimation Filter

To generate a wind force vector in on-line mode, measurement error equation can be derived as

$$\begin{aligned}e_f[k] &= \mathbf{y}_{mr}[k] - \mathbf{D}_{mrf}\mathbf{A}_{fd}\hat{\mathbf{f}}_s[k-1|k-1] \\ &- \mathbf{C}_{mr}\hat{\mathbf{x}}_r[k] - \mathbf{D}_{mru}\mathbf{u}_s[k]\end{aligned} \quad (7)$$

By minimizing the mean square of the measurement error, following filter equation can be obtained as (Kim 1998, Elmali & Olgac 1996, Widrow & Walach 1996)

$$\hat{\mathbf{f}}_s[k|k] = \mathbf{A}_{fd}\hat{\mathbf{f}}_s[k-1|k-1] + \mathbf{M}_{fMS}[k]e_f[k] \quad (8)$$

where

$$\mathbf{M}_{LMS}[k] = \mathbf{P}_{LMS}[k|k-1]\mathbf{D}_{mrf}^T \cdot (\mathbf{R}_{LMS} + \mathbf{D}_{mrf}\mathbf{P}_{LMS}[k|k-1]\mathbf{D}_{mrf}^T)^{-1}$$

$$\mathbf{P}_{LMS}[k|k] = (\mathbf{I} - \mathbf{M}_{LMS}[k]\mathbf{D}_{mrf})\mathbf{P}_{LMS}[k|k-1]$$

$$\mathbf{P}_{LMS}[k+1|k] = \mathbf{A}_{fd}\mathbf{P}_{LMS}[k|k]\mathbf{A}_{fd}^T + \mathbf{B}_{fwd}\mathbf{Q}_{LMS}\mathbf{B}_{fwd}^T$$

and $\mathbf{M}_{LMS}[k]$ = filter gain matrix; $\mathbf{P}_{LMS}[k|k]$ and $\mathbf{P}_{LMS}[k+1|k]$ = prediction error covariance matrices; \mathbf{Q}_{LMS} and \mathbf{R}_{LMS} = covariance matrices of \mathbf{w}_f and \mathbf{v} . Figure 3 shows the time histories of true and estimated wind forces and estimation error for the 9th component of the reduced wind force vector $\mathbf{B}_{mrf}\hat{\mathbf{f}}_s$.

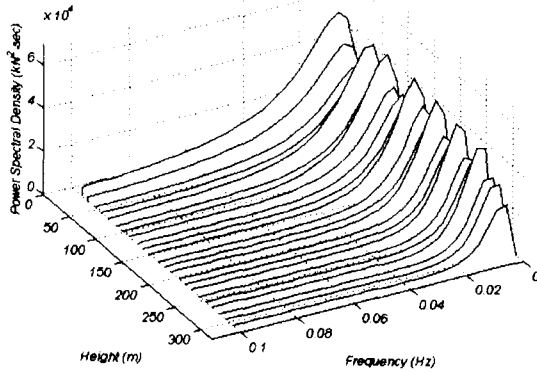


Figure 2. Power Spectral Densities of Wind Force Fluctuations at Various Nodes

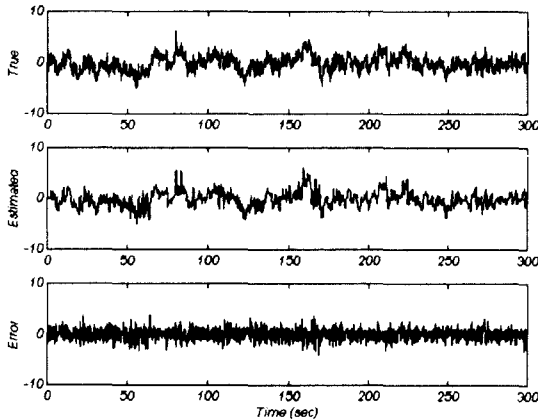


Figure 3. True and Estimated Disturbance and Error : 9th component of $\mathbf{B}_{mrf}\hat{\mathbf{f}}_s$

4. SLIDING MODE FUZZY CONTROLLER

4.1 Structure of SMFC

As in the sliding mode control (SMC), the basic strategy of the SMFC is forcing the state of the system to stay on the sliding

surface, where the response of the system can be reduced rapidly. The structure of the SMC is constructed using the Lyapunov's direct method. Then the controller is composed of a conventional feed-back part and a feed-forward part as (Khalil 1996)

$$\mathbf{u}_s(t) = -(\mathbf{PB}_{ru})^{-1}(\mathbf{PA}_r + \begin{bmatrix} 0 \\ \eta_0 \end{bmatrix}\mathbf{P})\hat{\mathbf{x}}_r(t) - (\mathbf{PB}_{ru})^{-1}\mathbf{PB}_f\hat{\mathbf{f}}_s(t) \quad (9)$$

where $\hat{\mathbf{f}}_s$ = a disturbance vector generated using an filter; $\mathbf{P} = [P_1 \ \Lambda \ P_n]^T$; and P_i = direction vector of the sliding surface for the i -th control force. Converting the above sliding mode controller into a fuzzy form, a sliding mode fuzzy controller can be obtained as (Kim & Yun 1999)

$$\mathbf{u}_s(t) = \mathbf{K}_{fuzzy}(t, \hat{\mathbf{x}}_r(t), \hat{\mathbf{f}}_s(t)) \quad (10)$$

where \mathbf{K}_{fuzzy} is the fuzzy controller. Figure 4 shows the overall structure of the SMFC with an disturbance estimation filter.

4.2 Design of Fuzzy Control

The present fuzzy controller consists of 5 modules : (1) Normalization, (2) Fuzzification, (3) Inference Engine, (4) De-Fuzzification, and (5) De-Normalization (Driankov *et al.* 1993). In the first module named *Normalization*, the observed signal are normalized as

$$\mathbf{s}_n(t) = \alpha_n \mathbf{K}_n \mathbf{x}_{re}(t)$$

$$\mathbf{s}_i(t) = \alpha_i \mathbf{K}_i \mathbf{x}_{re}(t) \quad (11)$$

$$\mathbf{s}_f(t) = \alpha_f \mathbf{K}_f \hat{\mathbf{f}}_s(t)$$

where $\mathbf{K}_n = (\mathbf{PB}_{ru})^{-1}(\mathbf{PA}_r + \begin{bmatrix} 0 \\ \eta_0 \end{bmatrix}\mathbf{P})$;

$$\mathbf{K}_i = \|\mathbf{B}_{ru}\|^{-1} \|\mathbf{K}_n\| \mathbf{B}_{ru}^T - (\|\mathbf{K}_n\| \|\mathbf{B}_{ru}\|)^{-1} \mathbf{K}_n \mathbf{B}_{ru} \mathbf{K}_n;$$

$\mathbf{K}_f = -(\mathbf{PB}_{ru})^{-1} \mathbf{PB}_f$; $\mathbf{s}_n(t)$ and $\mathbf{s}_i(t)$ = normal and tangential components of the state vector with respect to the transformed sliding surface; $\mathbf{s}_f(t)$ = auxiliary state representing the feed-forward control force; and α_n , α_i and α_f are scale factors.

Fuzzification module converts the scaled crisp values to fuzzy numbers with singleton membership functions. *Fuzzy Rule Base* is constructed based on the SMC as shown in Table 1. In this study, the implication of the fuzzy relation from *If-then* rule is realized by Mamdani's method, and triangular membership functions are used for various fuzzy numbers as in Figure 5. Aggregation for several fuzzy relations is carried out by disjunction. In the module of *Inference Engine*, approximate reasoning is conducted using the generalized modus ponens. In the module of *De-Fuzzification*, the fuzzy control force is transformed into a crisp number by the center of gravity method.

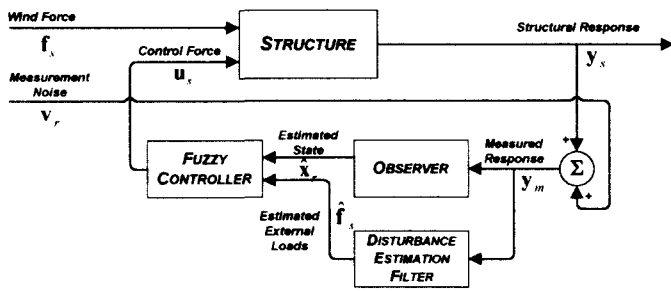


Figure 4. Schematic Diagram of SMFC with Disturbance Estimation Filter

Table 1. Rule Table for \tilde{u}_{FB}

$\tilde{s}_n / \tilde{s}_n$	NB	NM	NS	Z	PS	PM	PB
PB	Z		NS		NM		NB
PM		Z		NS		NM	
PS	PS		Z		NS		NM
Z		PS		Z		NS	
NS	PM		PS		Z		NS
NM		PM		PS		Z	
NB	PB		PM		PS		Z

Note : The first character in the fuzzy number denotes negative or positive, and the second character denotes big, medium, or small. Z means zero.

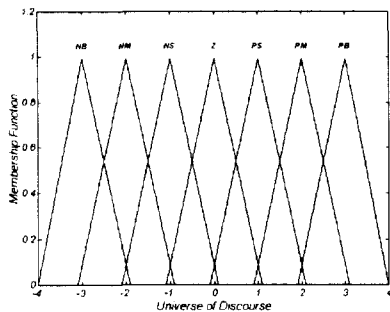


Figure 5. Triangular Membership Functions

5. NUMERICAL SIMULATION STUDY FOR BENCHMARK PROBLEM

A numerical simulation study is carried out on the benchmark structure proposed by Yang, *et al.* (1998). The structure is a 76-

story concrete office tower with an active tuned mass damper (ATMD) installed on the top floor. Detailed data related to this problem are given at the web site of the problem organizer (Agrawal, 2000). It is modeled as a system with 24 dof's for structural analysis. Then it is reduced to a system with 12 dof's using the balanced truncation method for the computational efficiency in the control process. 12 performance indices are defined to compare the control performance by the problem organizer. J1 and J2 are for rms acceleration performance, J3 and J4 are for rms displacement performance, and J5 and J6 are performance related to rms displacement and velocity of the ATMD. On the other hand, J7 and J8 are for peak acceleration performance, J9 and J10 are for peak displacement performance, and J11 and J12 are performance related to peak displacement and velocity of the ATMD. Control performance of the present SMFC is compared with those obtained by other methods in Table 2. Figure 6 shows time histories of the wind forces at 260 and 173m above ground, the responses of the top floor for uncontrolled and controlled cases and the control forces.

The results indicate that the overall performance of the proposed SMFC is as good as the other methods with the disturbance estimator. However, the SMFC requires slightly larger displacement and velocity of the ATMD as the performance indices J5, J6, J11 and J12 indicate. The results also show that most of the performance indices improve as the disturbance estimation filter is introduced, which indicates that the wind force estimation using the disturbance estimation filter makes the control algorithm more effective.

6. CONCLUDING REMARKS

Disturbance estimation filter is presented to estimate the unmeasured wind force vector, and it is employed in sliding mode fuzzy controller (SMFC) for wind vibration control. The present method is applied to a benchmark problem of a wind-excited building. The results from the numerical simulation study show the effectiveness of the present algorithm.

ACKNOWLEDGEMENT

The authors gratefully acknowledge the financial supports to this research from the Korea Earthquake Engineering Research Center and the BK21 Project.

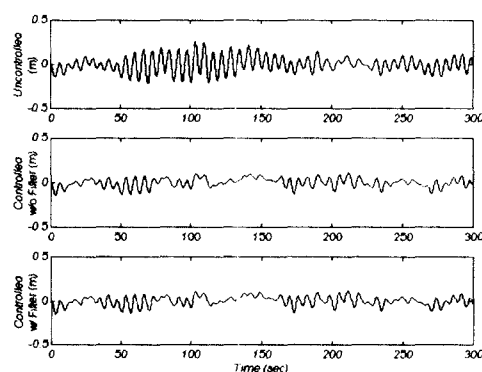
Table 2. Comparison of Control Performance Criteria

	LQG*	FWLQG* (Filter 1)	$H_{x/\mu}$ *	Quadratic Stability*	SMC5*	SMFC w/o Filter	SMFC w/ Filter
J1	0.369	0.351	0.357	0.418	0.367	0.383	0.373
J2	0.606	0.614	0.608	0.584	0.608	0.589	0.575
J3	0.509	0.501	0.490	0.515	0.507	0.520	0.536
J4	0.491	0.499	0.509	0.484	0.493	0.480	0.464
J5	1.870	1.817	1.879	1.481	1.858	2.492	2.250
J6	1.891	1.840	2.046	1.580	1.889	2.327	2.309
J7	0.481		0.476	0.542	0.477	0.500	0.483
J8	0.460		0.438	0.423	0.464	0.412	0.394
J9	0.569		0.569	0.568	0.568	0.559	0.569
J10	0.423		0.423	0.423	0.424	0.434	0.424
J11	2.401		2.551	2.027	2.369	2.562	2.401
J12	2.618		2.898	2.278	2.617	2.581	2.619

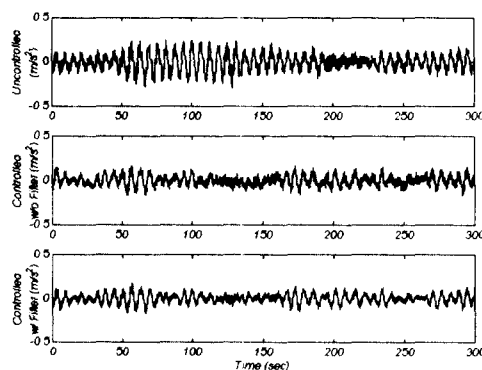
Note : * The results are from the references (Yang *et al.* 1998, Jin *et al.* 1998, Watanabe *et al.* 1998, Srivastava *et al.* 1998, and Wu *et al.* 1998)

REFERENCES

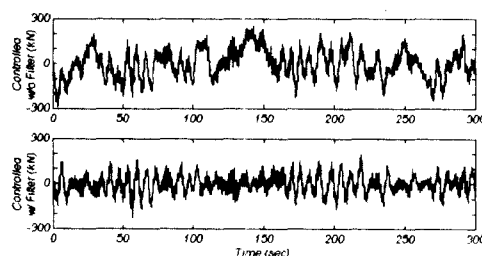
- Agrawal, A.K. 2000. <http://www-ce.engr.ccnyc.cuny.edu/people/faculty/agrawal/benchmark.html>
- Elmali, H. & N. Olgac 1996. Implementation of Sliding Mode Control with Perturbation Estimation. *IEEE Transaction on Control System Technology* 4(1)
- Driankov, D., H. Hellendoorn & M. Reinfrank 1993. *An Introduction to Fuzzy Control*. New York: Springer-Verlag.
- Goodwin, G.C. & K.S. Sin 1984. *Adaptive Filtering, Prediction, and Control*. New Jersey: Prentice-Hall.
- Jin, G., Y. Chi, M.K. Sain & B.F. Spencer, Jr. 1998. Frequency Domain Optimal Control of the Benchmark Wind-Excited Building. *Proc. of the 2nd World Conference on Structural Control*, Kyoto, Japan.
- Khalil, H.K. 1996. *Nonlinear Systems*, New Jersey: Prentice-Hall.
- Kim, N.I. 1998. *Robust Motion Control of Stewart Platform Manipulator and Its Application to the Vibration Control of Slender Structure*. Ph.D Thesis. KAIST.
- Kim, S.B. & C.B. Yun 1999. Vibration Control of Large Structures using Sliding Mode Fuzzy Control. *Proc. of the International Post-SMiRT Conference on Seismic Isolation, Passive Energy Dissipation and Active Control of Vibrations of Structures*, Cheju, Korea.
- Ljung, L. 1987. *System Identification – Theory for the User*. New Jersey: Prentice-Hall.
- Srivastava, S., F. Jabbari, W.E. Schmitendorf & J.N. Yang 1998. Controllers with Quadratic Stability and Performance for the Benchmark problem of Wind-excited Buildings. *Proc. of the 2nd World Conference on Structural Control*, Kyoto, Japan.
- Watanabe, T. & K. Yoshida 1998. $AH_{x/\mu}$ Robust Vibration Control Method Applied to Benchmark Building. *Proc. of the 2nd World Conference on Structural Control*, Kyoto, Japan.
- Widrow, B. & E. Walach 1996. *Adaptive Inverse Control*, New Jersey: Prentice-Hall.
- Wu, J.C. & J.N. Yang 1998. Sliding Mode Control for Wind-Excited Benchmark Problem. *Proc. of the 2nd World Conference on Structural Control*, Kyoto, Japan.
- Yang, J.N., J.C. Wu, B. Samali & A.K. Agrawal 1998. A Benchmark Problem for Response Control of Wind-Excited Tall Buildings. *Proc. of the 2nd World Conference on Structural Control*, Kyoto, Japan.



(a) Top Floor Displacements



(b) Top Floor Accelerations



(c) Control Forces

Figure 6. Time Histories of Wind Forces, Uncontrolled and Controlled Responses and Control Forces