

"CALIS/EC Korea '98"
International Conference

*Document Imaging & Conversion
And the Application of Standards*

Mr. Troy A. Gamble

Kyungwon Corporation-TomaHawk Division
4F, Won Jae Plaza, 38-23, Samsung-Dong, Kangnam-Ku, Seoul, Korea
Phone: +82-2-3442-2181, FAX: +82-2-3442-2184
Email: gm92892chollian.net

TOMAHAWK II

Document Imaging and Conversion Specialists

*Converting Information into Electronic
Formats... Which Includes:*

- Scanning or Transferring Information**
- Converting Information to Various
Formats**

**“Create, Maintain and help in the utilization
of Electronic Information”**

What is CALS?

CALS is about... Information

&

Process Involvement

Both are Continuous

*A Basic Fundamental
of CALS...*

Phase out Paper Based Information Transfers

In Favor of ...

**Exchange and Use of Electronic
Information**

*Moving From Paper to
Electronic*

Convert Info. → Share Info. 

Utilize Info. → Sustain Info.

**An Ongoing Process*

*Most Difficult & Time Consuming
Documents to Convert*

- Engineering Drawings
- Architectural Designs
- Civil/Topographic Designs
- Technical Manuals
- Electrical Schematics
- Maps

Area of Focus: Standardization

Elements of Standardization

- **Create** (*open standards*)
- ***Apply** (*conversion & creation process*)
- ***Integrate QA**
- **Coordinate Standards**

How Standards Can Help

To Provide a:

- Defined set of *proper practices for the creation of engineering designs.*
- Defined set of *attributes for design data.*
- Defined set of *environment variables for effective CAD operation.*

*To Implement Standards
Effectively*

1. **Identify... a set of standards as an industry or organization wide base.**
2. **Make standards readily available.**
3. **Make standards easy to apply.**
4. **Build upon and sustain standards in an organized manner.**

Solution: A Software Assistant

That Assists the End User in:

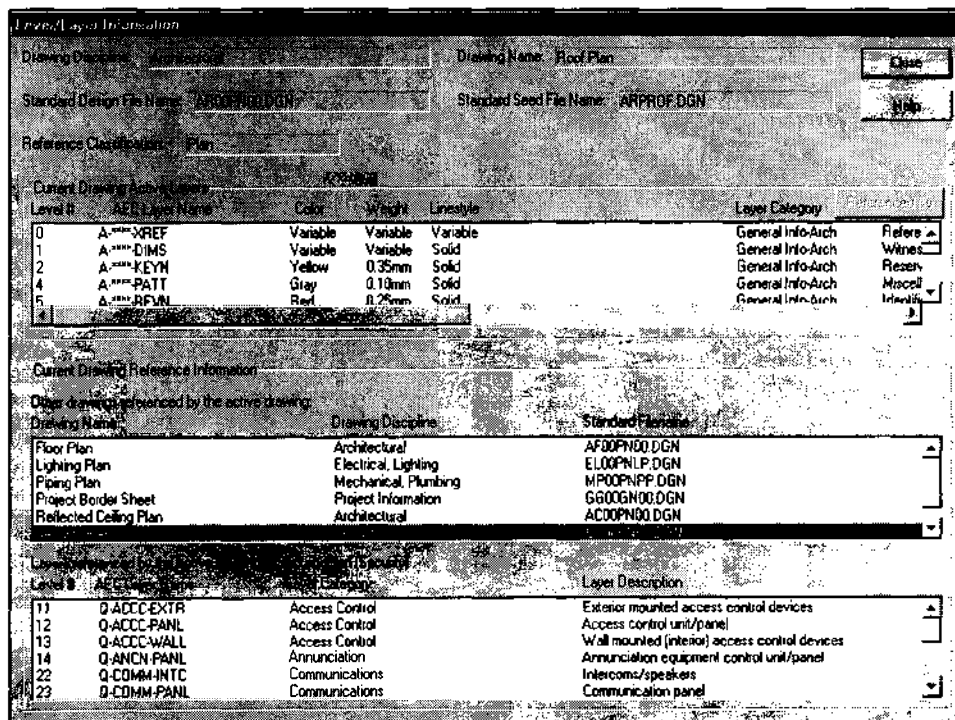
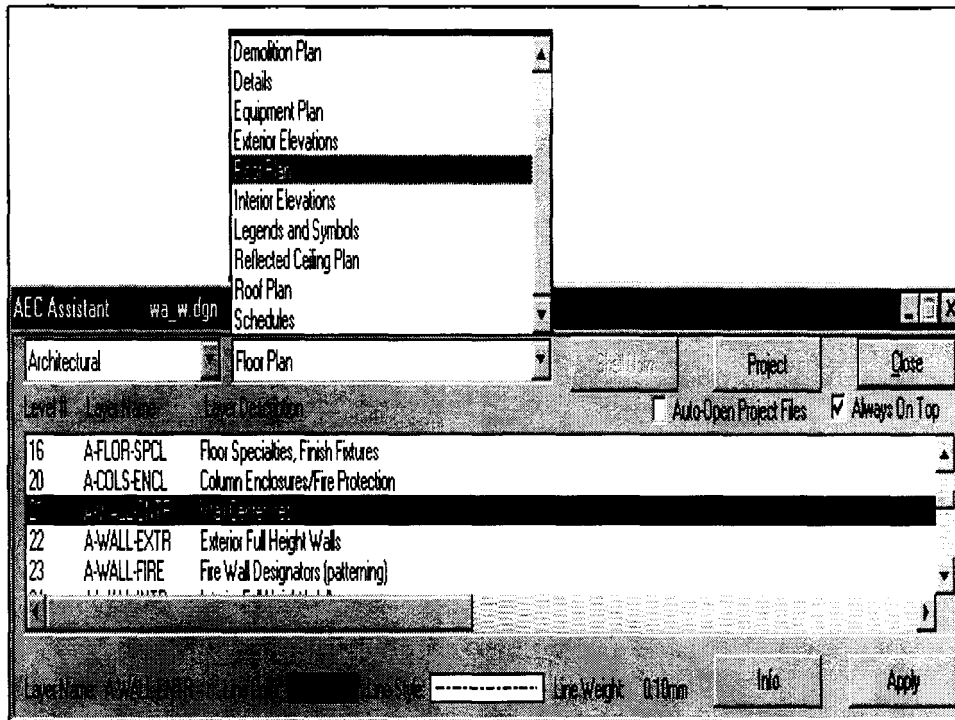
- Creating standards compliant designs.
- Integrating between the user's CAD application and the standards data.
- Reducing tedious work associated with Training, Implementing and Realization of standardized engineering designs.

The Components of the Solution

- A database that contains the standards attribute data and environment variables.
- An application that dynamically applies the standards from the database to the designs.
- A database management system that provides for administration and augmentation of the standards data, to include the addition of local standards.

Full Page Screen Shot of the AEC Assistant in Action





The Benefits

- Design Creation is More Efficient
- Large Shared Body of Knowledge Created and Maintained...Reducing Training Time, Re-Training, Costs and Design Efforts.
- Electronic Data Easier to Exchange and Integrate.

*An Overall Increase in Efficiency, Savings
and Competitiveness Will be Achieved*

For Further Information:

Northwest Office:

19109 36th Avenue W
Suite 203
Lynnwood, WA 98036
Tel: (425) 776-0665
Fax: (425) 670-8784

Midwest Office:

50 Lakeview Parkway
Suite 101
Vernon Hills, IL 60061
Tel: (847) 573-9810
Fax: (847) 573-9820



Eastern Office:

46 Deerfield Road
Needham, MA 02192
Tel: (781) 449-5849
Fax: (781) 449-5851

Federal Government Office:

44 Canal Center
Suite 400
Alexandria, VA 22314
Tel: (703) 518-8877
Fax: (703) 518-8611

Corporate Headquarters
8315 Century Park Court, Suite 200
San Diego, CA 92123
Tel: (619) 874-7692 Fax: (619) 874-2371

Kyungwon Corporation, Tomahawk Division
4F Won Jae Plaza, 38-23, Sam Sung Dong
Kang Nam-Ku, Seoul, Korea 135-090
Tel: 82-2-3442-2181 Fax: 82-2-3442-2184

<http://www.tomahawk.com>