

자음의 음향적 특성

Acoustic Properties of Korean Consonants

지 민제 (한국전자통신연구소)

1. 개요

자음의 파형과 스펙트로그램을 통해 다음 사항들을 살핀다.

- 모음과 자음의 음향적 특성
- 조음방법에 따른 특성
- 조음 장소에 따른 특성
- 환경에 따른 특성
- 유/무성에 따른 특성
- 연/경성에 따른 특성
- 유/무기에 따른 특성
- 동시조음에 따른 특성
- 자음의 길이

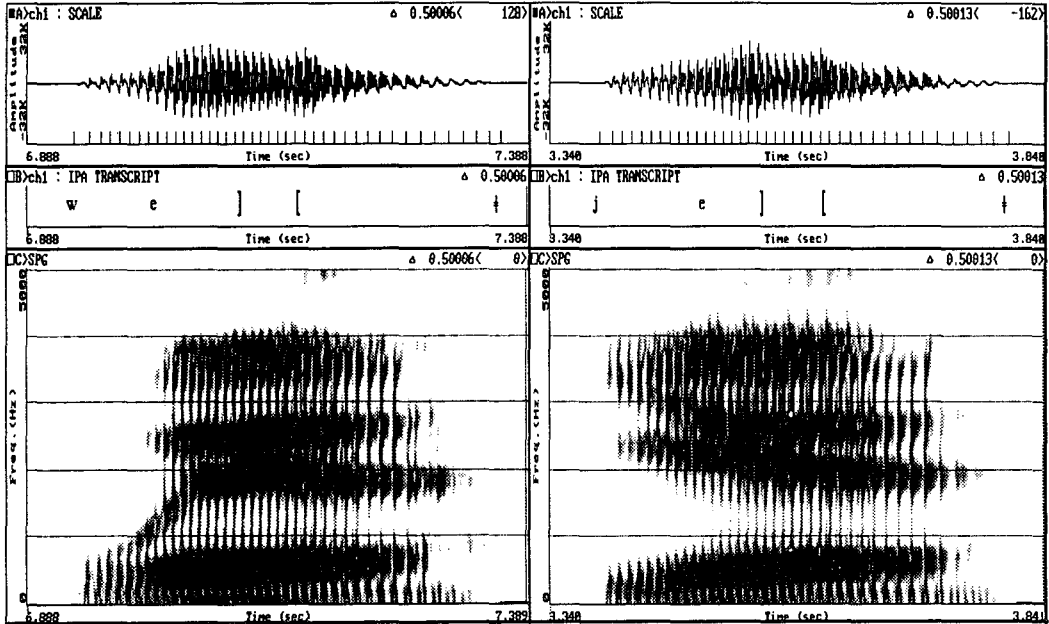
2. 자음의 파형과 스펙트로그램

2.1. /자음+모음/

<반모음>

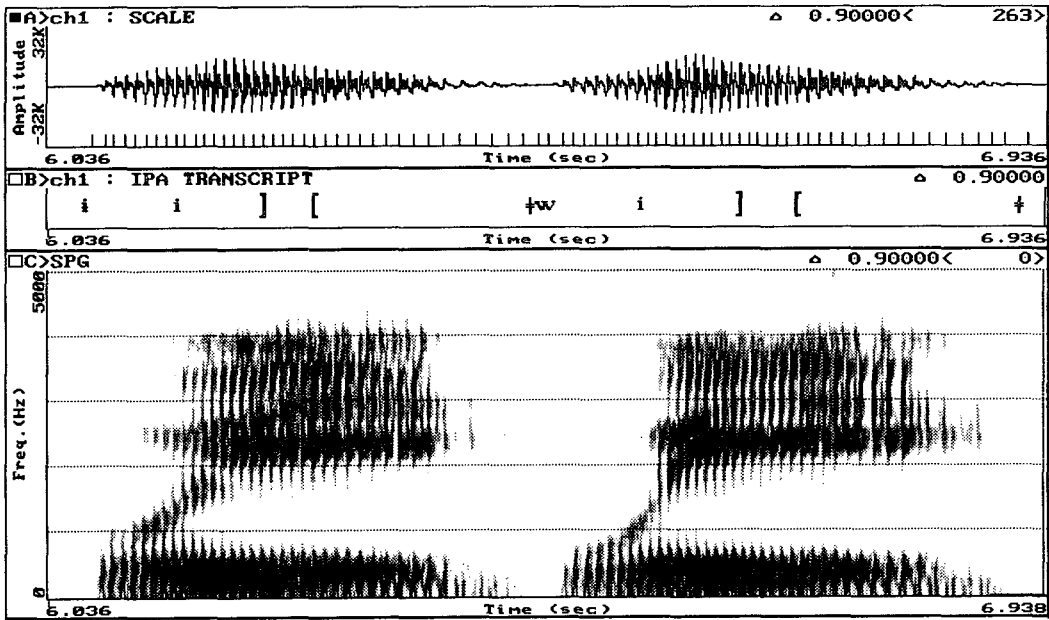
/웨/

/야/



/의/

/위/

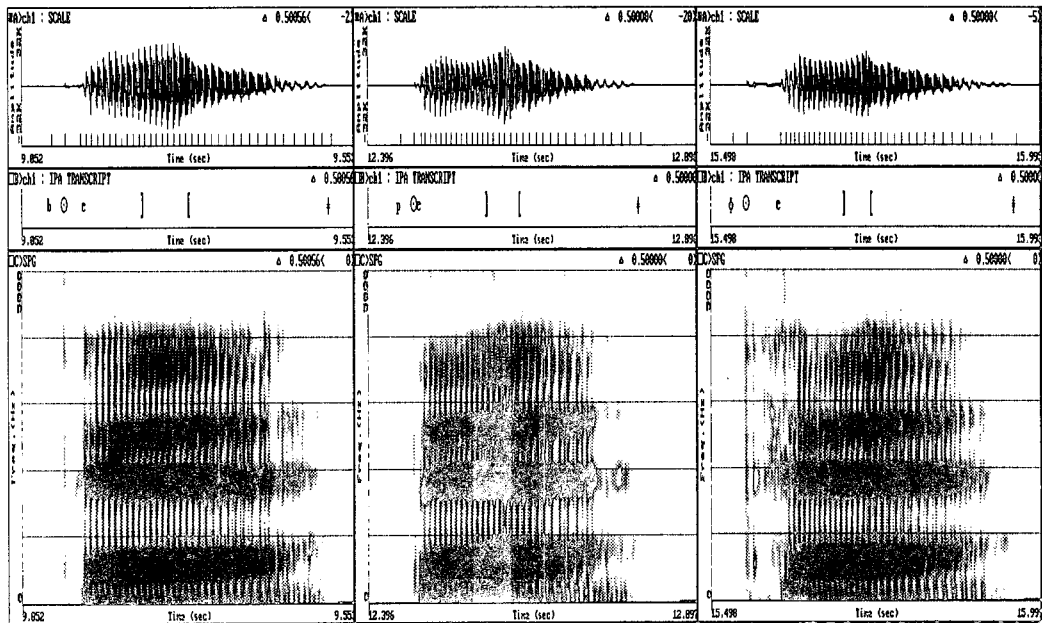


<파열음>

- 양순음 /베/

/배/

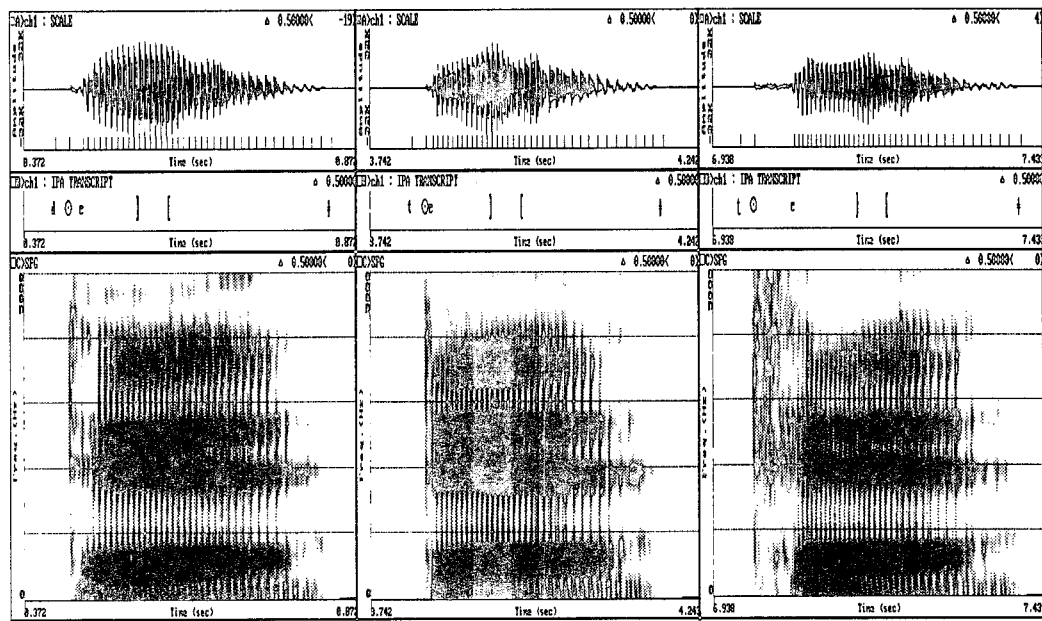
/피/



- 치경음 /데/

/테/

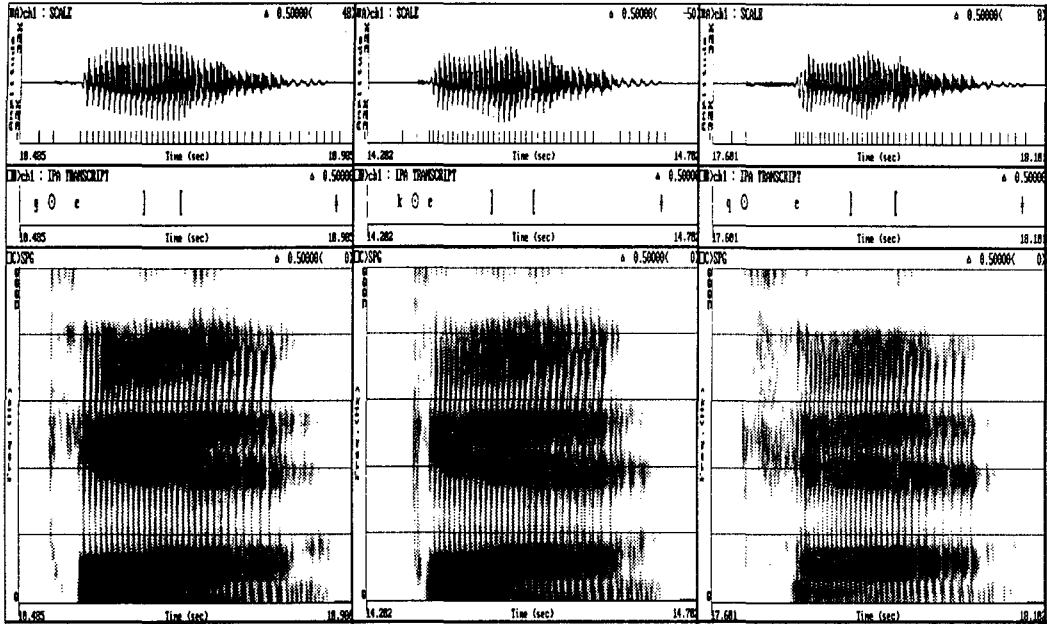
/테/



- 연구개음 /계/

/계/

/계/

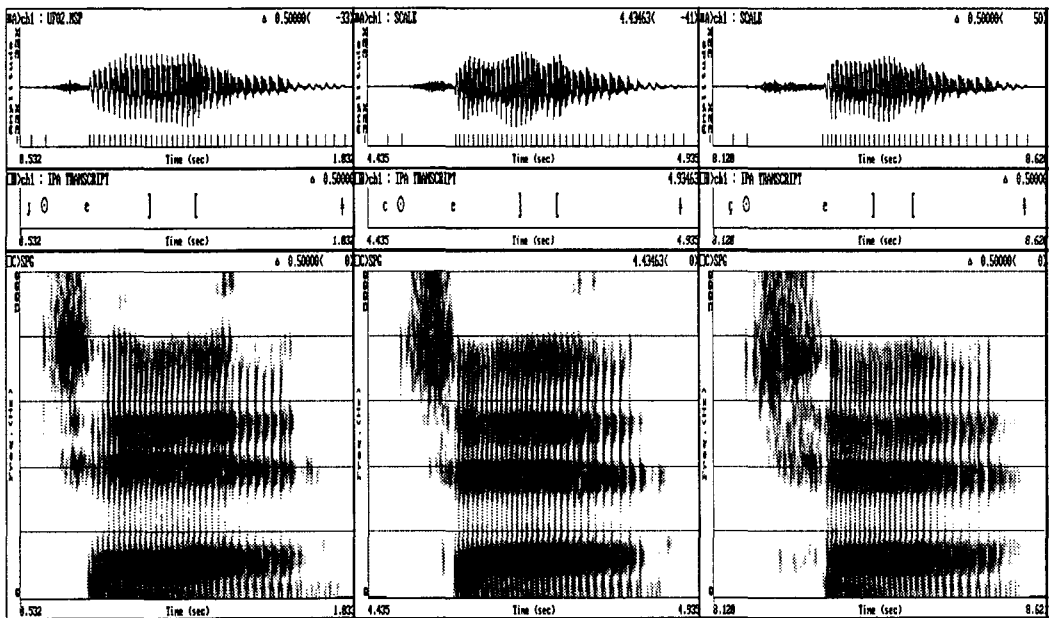


<파찰음>

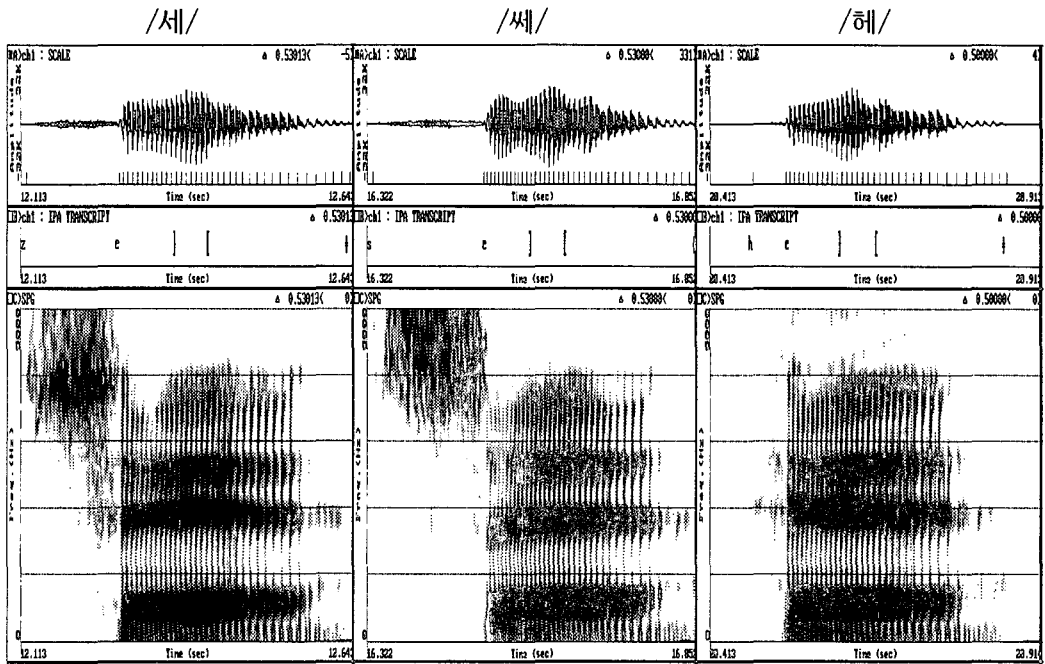
/제/

/제/

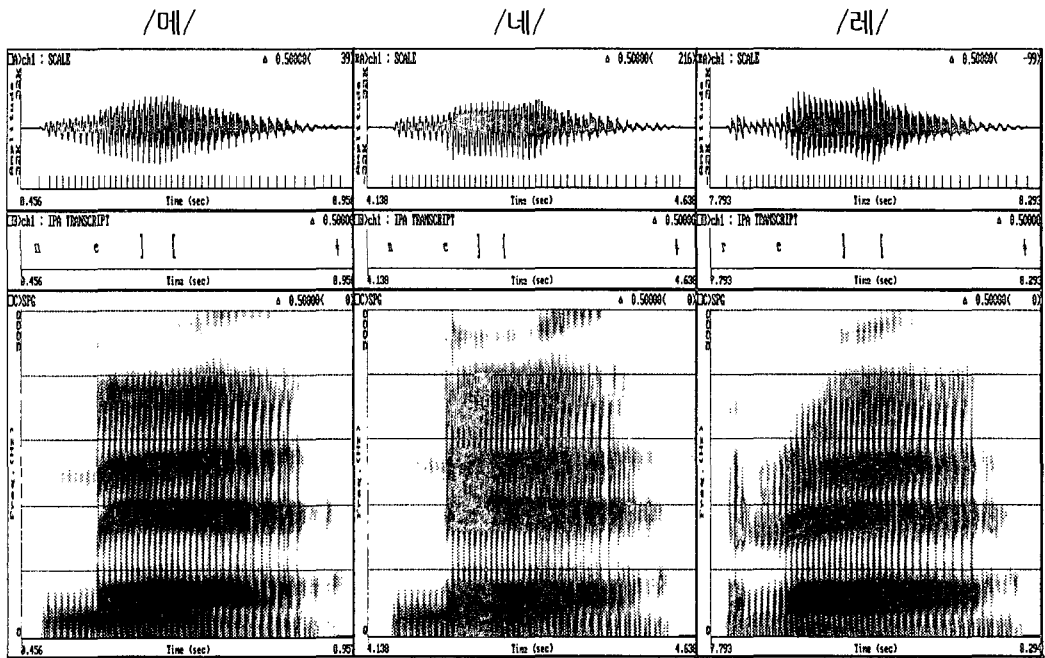
/제/



<마찰음>



<유성 자음>

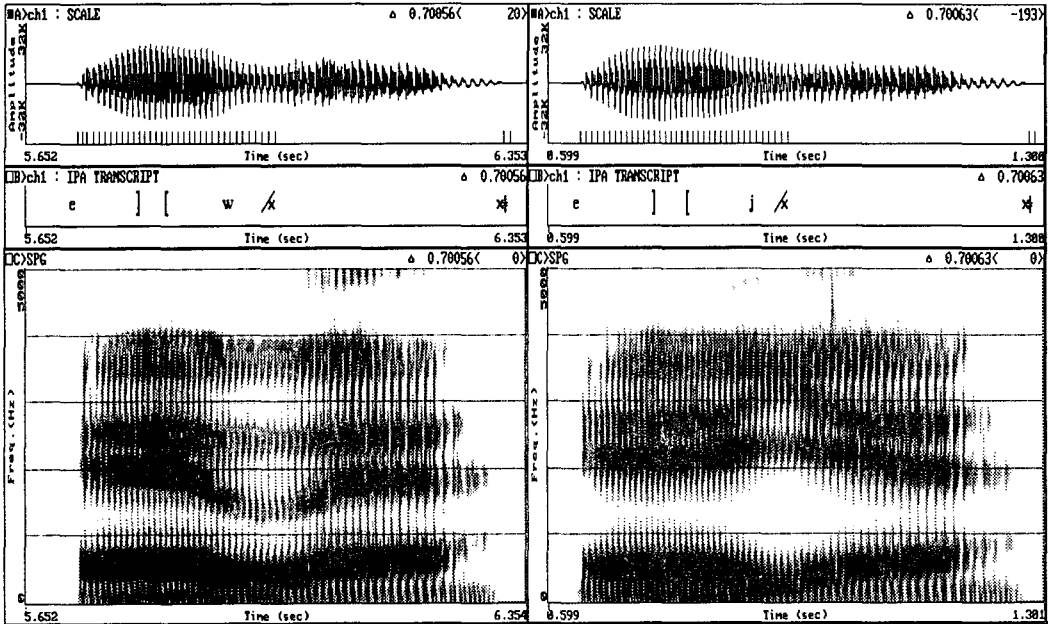


2.2. /모음+자음+모음/

<반모음>

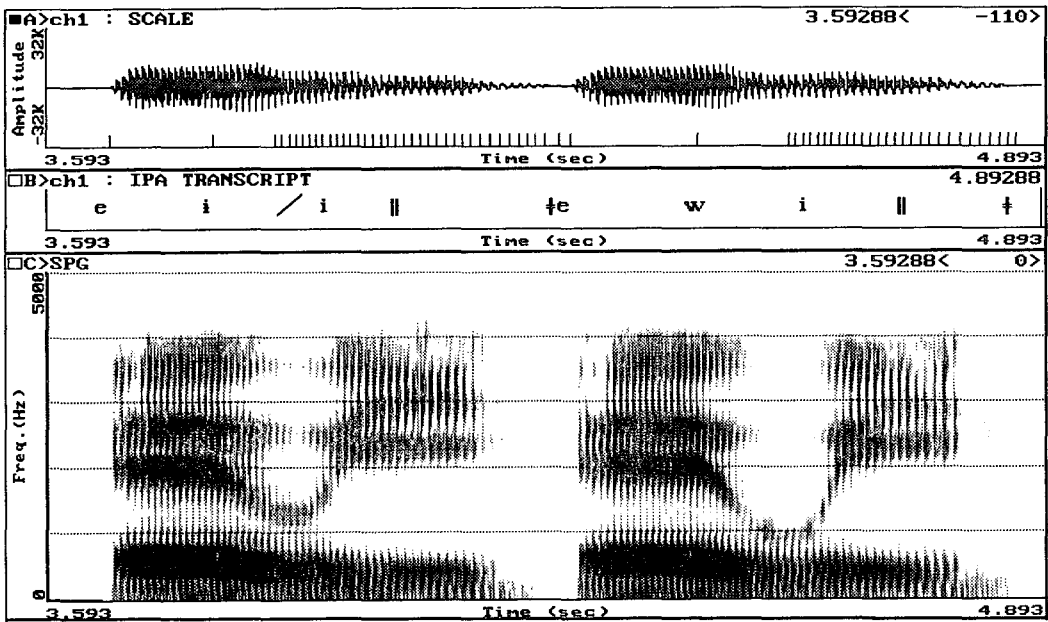
/에워/

/에야/



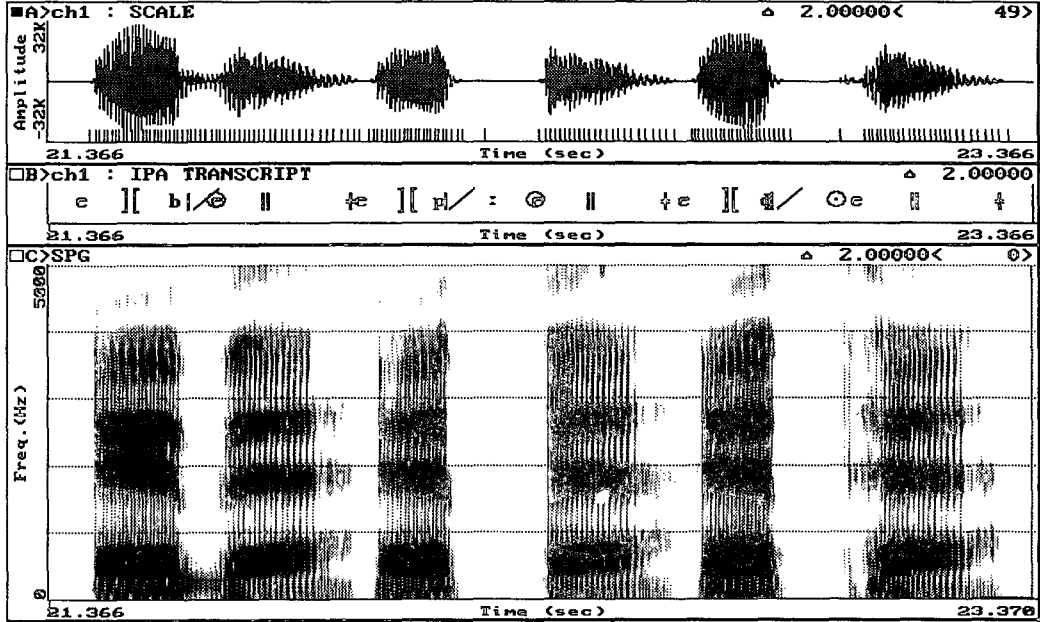
/에의/

/에위/

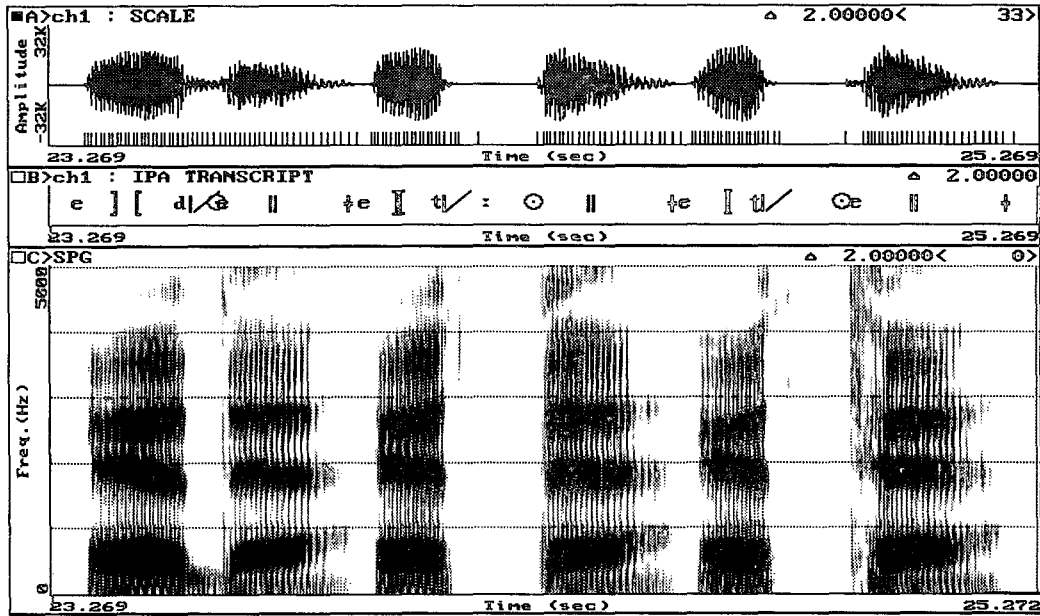


<과열음>

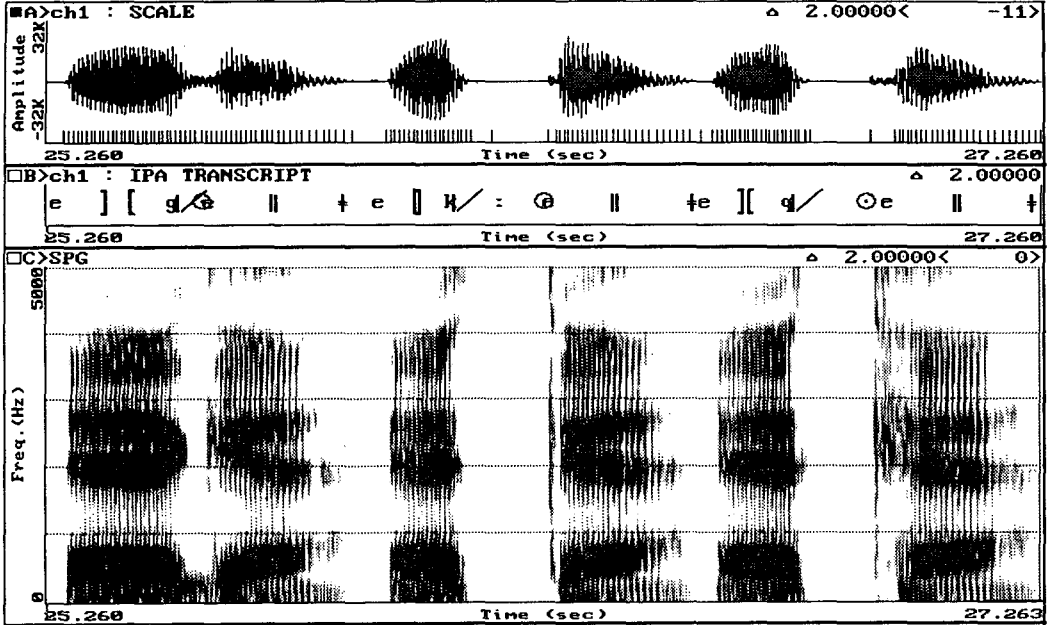
- 양순음 /에베/ /에뻬/ /에뻬/



- 치경음 /에데/ /에뎨/ /에테/

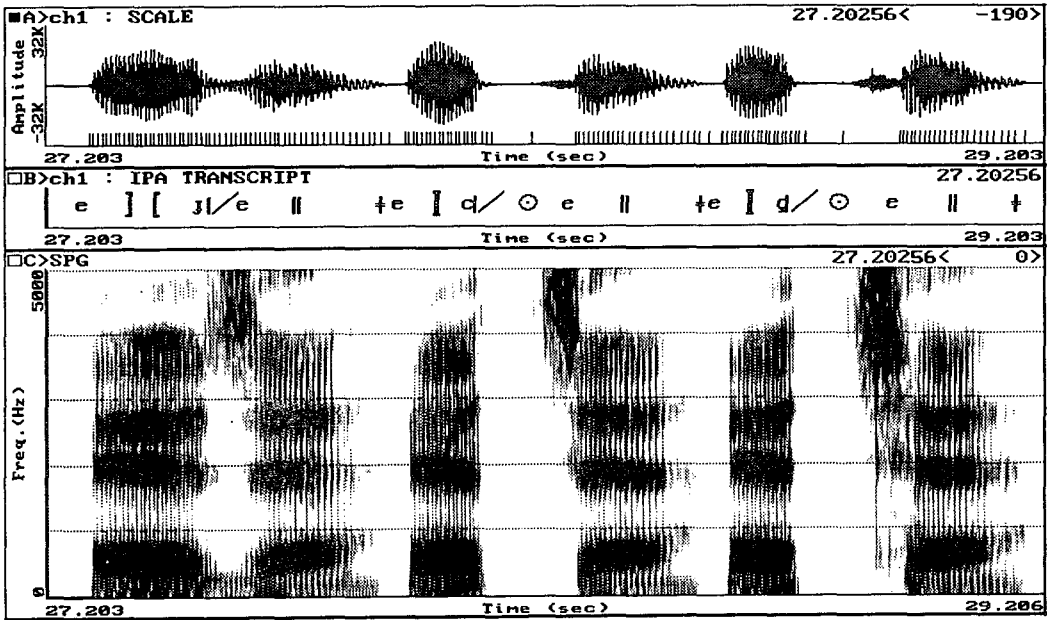


- 연구개음 /에게/ /에게/ /에게/



<파찰음>

/에제/ /에째/ /에체/

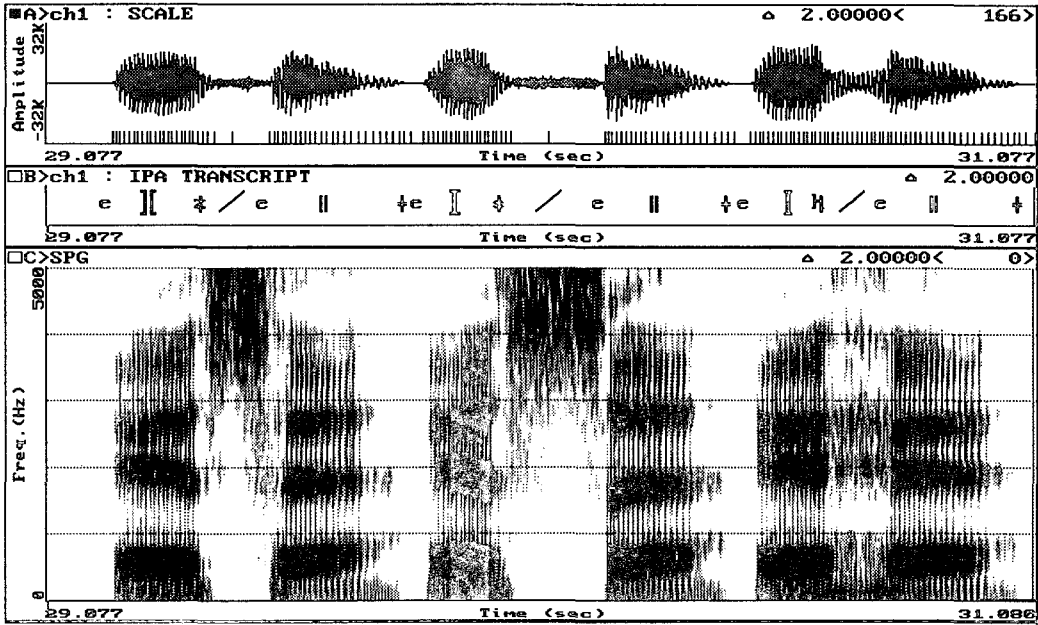


<마찰음>

/에세/

/에세/

/에헤/

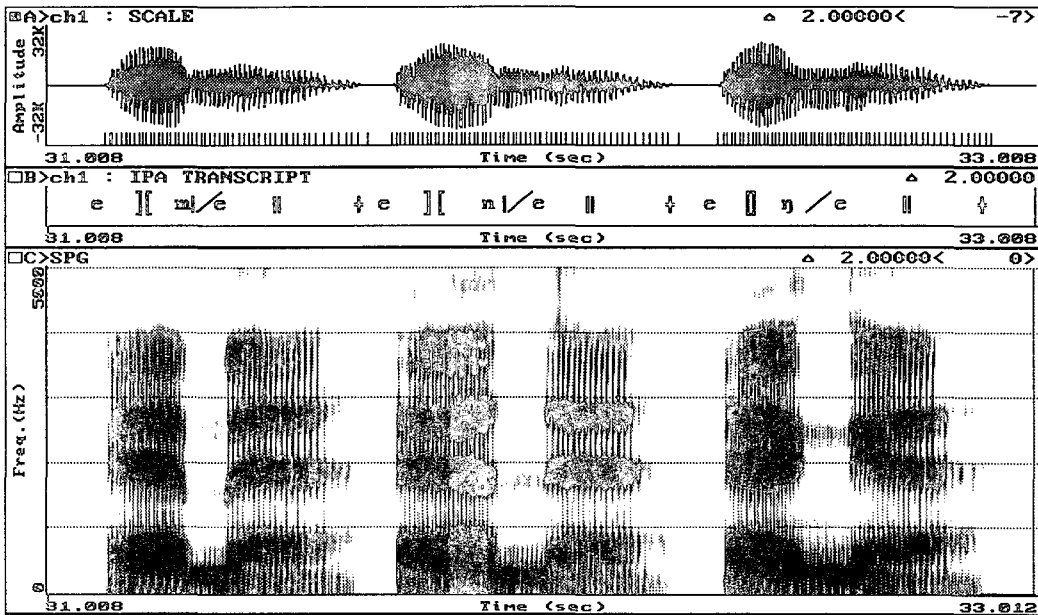


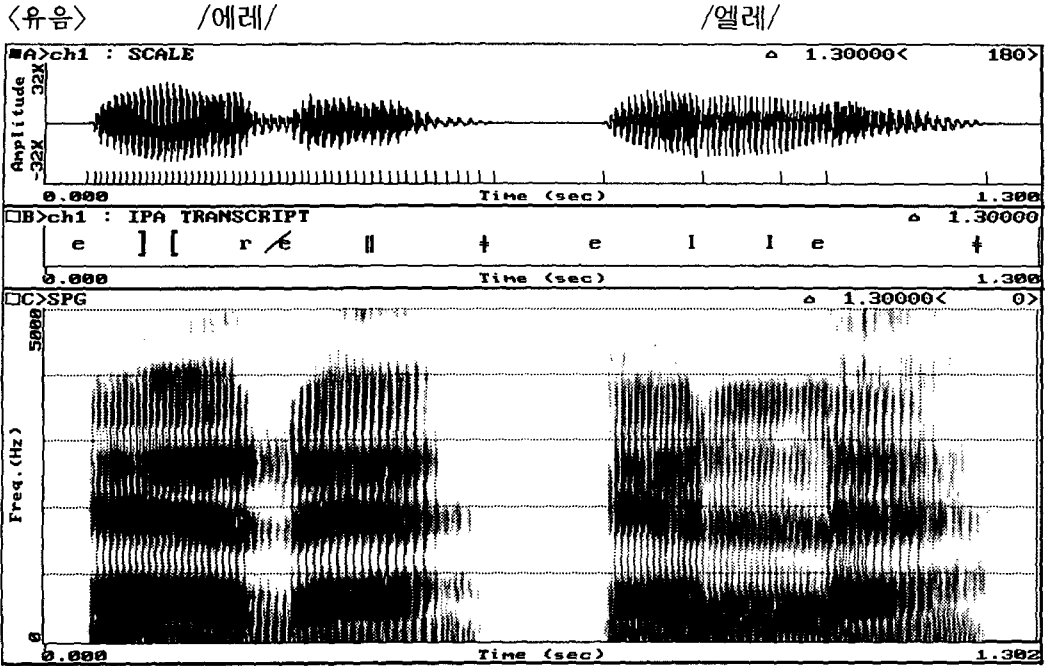
<비음>

/에메/

/에네/

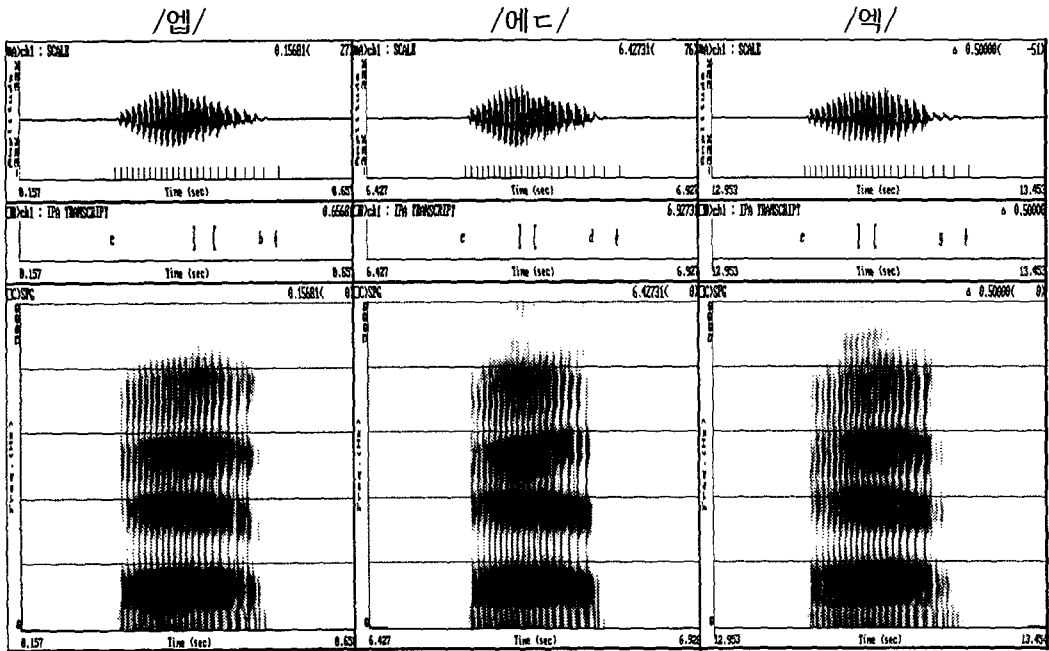
/엔에/





2.3. /모음+자음/

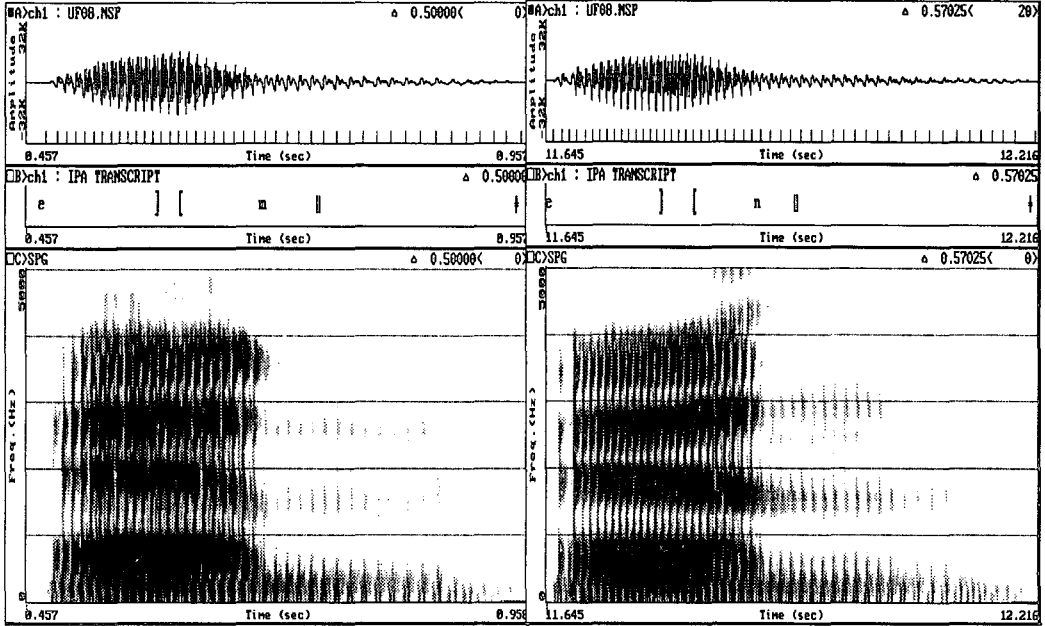
<무파음>



<유성 자음>

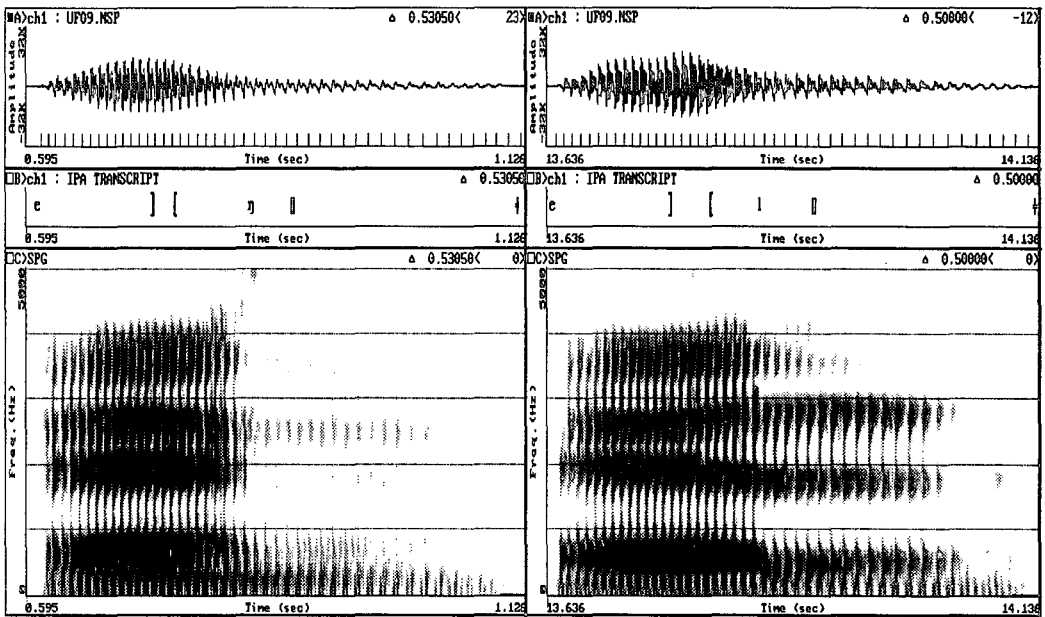
/엠/

/엔/



/엡/

/엘/

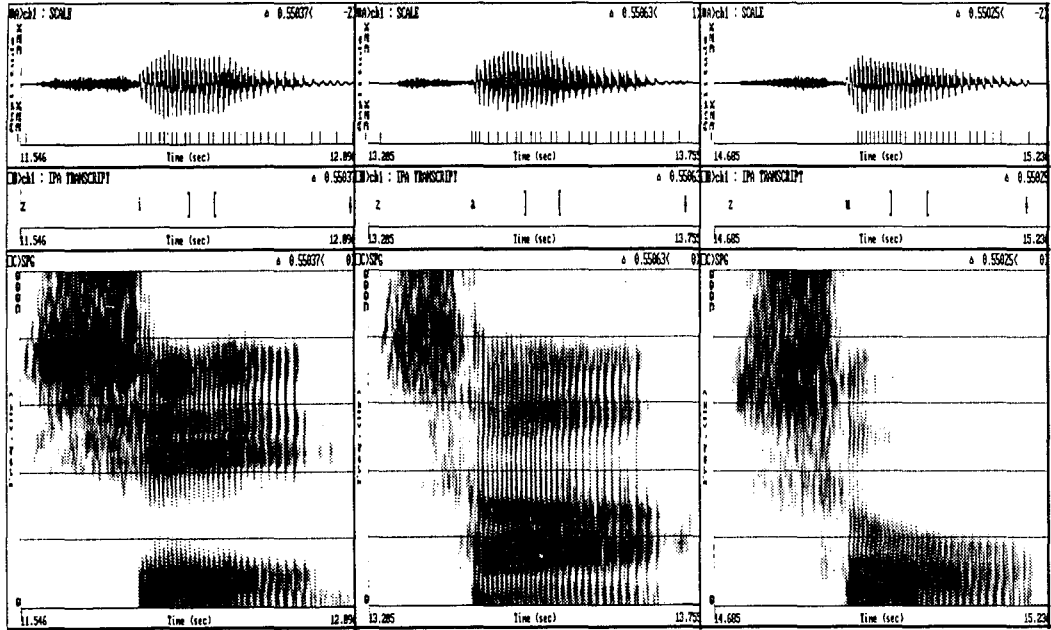


2.4. 동시조음

/시/

/사/

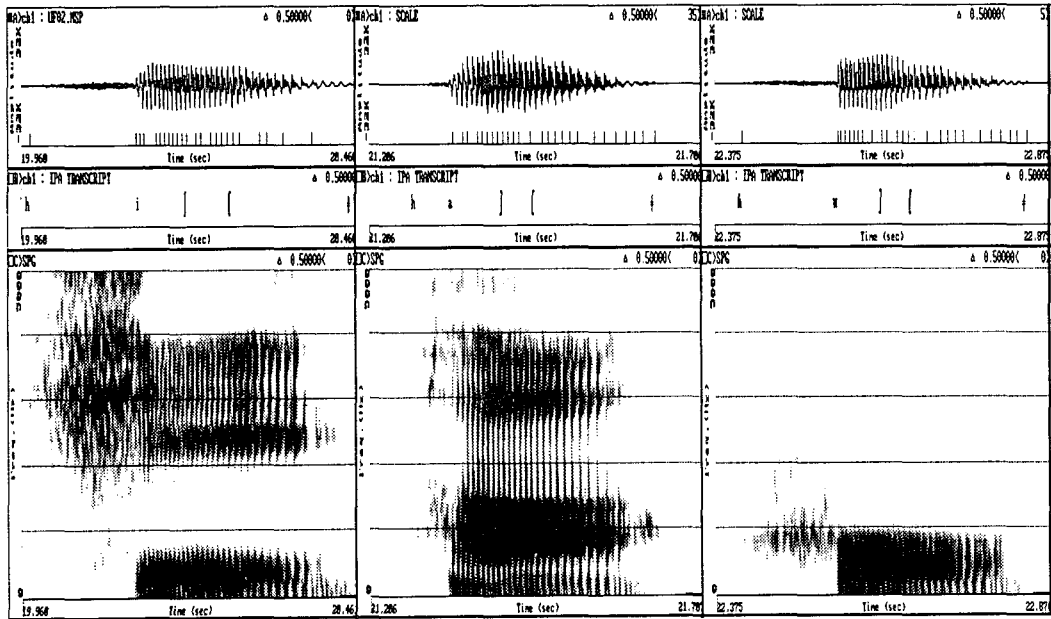
/수/



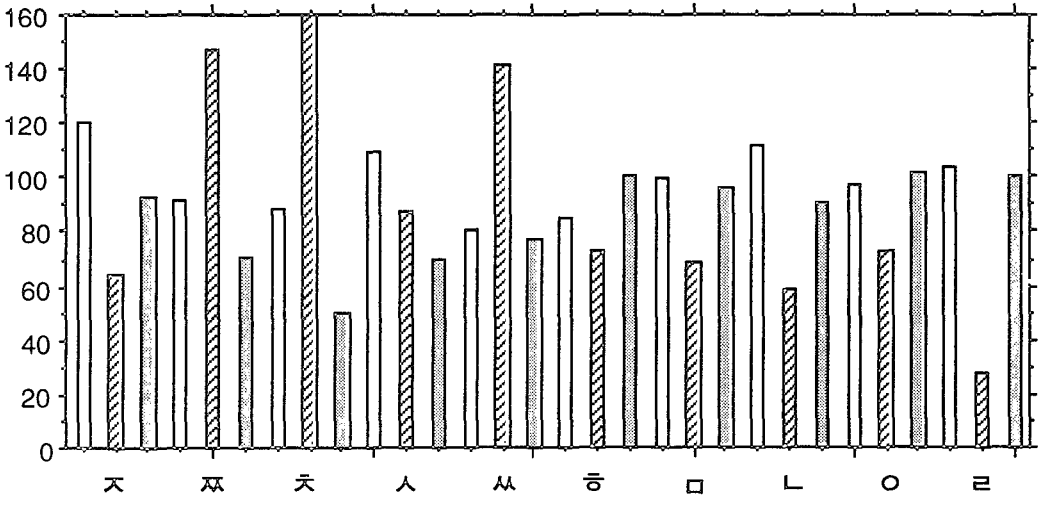
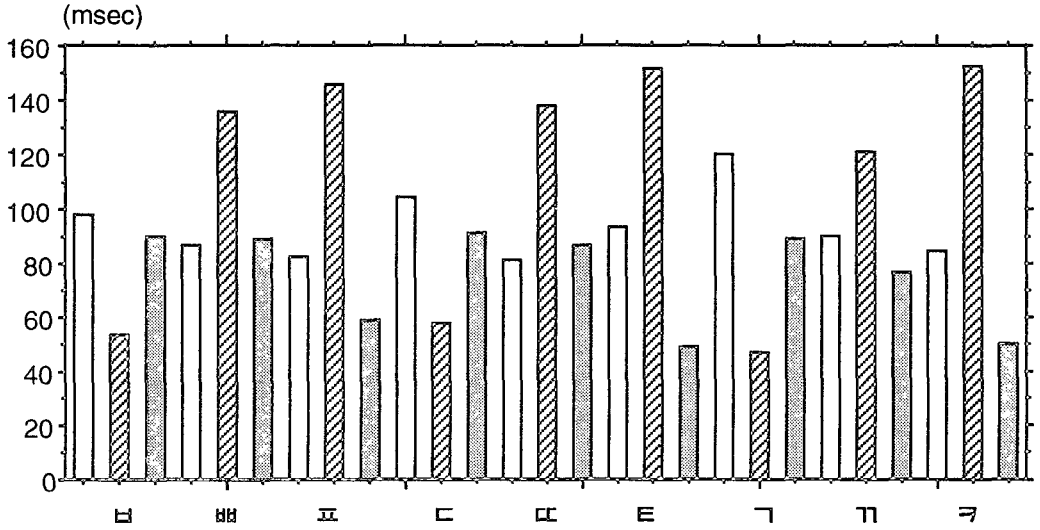
/히/

/하/

/후/



3. /모음+자음+모음/ 환경에서 우리말 자음과 앞뒤 모음의 길이
 (자음: ▨, 앞 모음: □, 뒤 모음: ▩)



〈참고 문헌〉

- 지 민제 (1993), 소리의 길이, 새국어생활, 제3권 1호, 국립 국어연구원.
- Borden, G.J. & Harris, K.S. (1980), *Speech Science Primer*, Williams & Wilkins: Baltimore/London.
- Catford, J.C. (1988), *A Practical Introduction to Phonetics*, Clarendon Press: Oxford.
- Fant, G. (1973), *Speech Sounds and Features*, The MIT Press.
- Pickett, J.M. (1980), *The Sounds of Speech Communication: A primer of acoustic phonetics and speech perception*, University Park Press: Baltimore.
- Zhi, M. (1982), *Studies on the Phonetic Properties of Korean Ostruents*, Essay No. 10, Dept. of Phonetics, Umea Univ.
- Zhi, M. & Lee, H. B. (1987), *A Spectrographical Study of Korean Vowel*, Korea Journal 27-2, Korean National Commission for UNESCO.
- Zhi, M., Lee, Y.J. & Lee, H.B. (1990), *Temporal Structure of Korean Plosives in /VCV/*, Proceedings of SICONLP '90, Seoul.