

## Corrigendum

Algae 2012, 27(1): 73

<http://dx.doi.org/10.4490/algae.2012.27.1.073>

Open Access

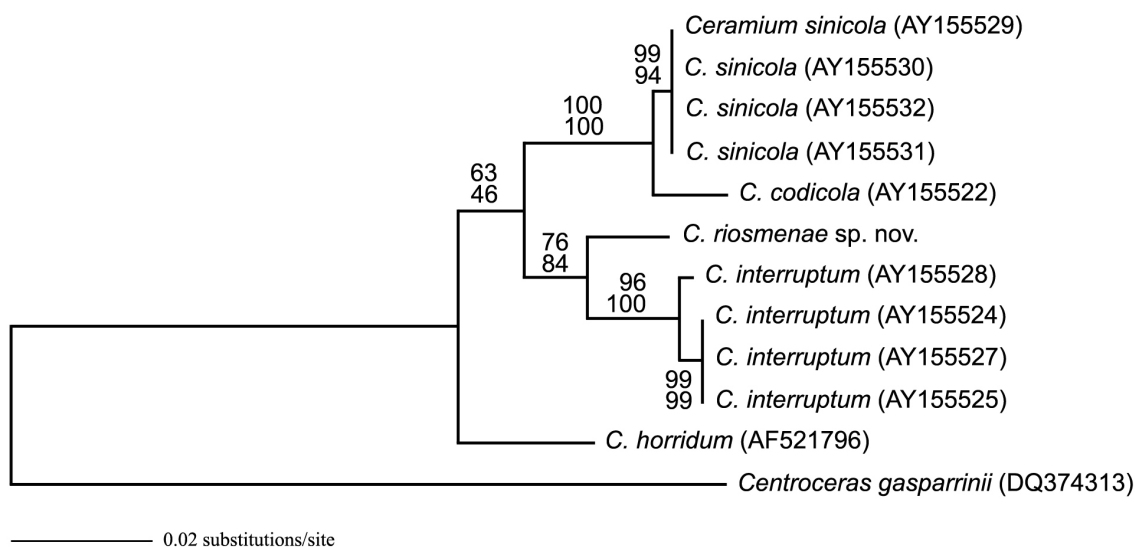


### *Ceramium riosmenae* sp. nov. (Ceramiaceae, Rhodophyta): a new complete corticated species on *Gracilaria* from Baja California Sur, Mexico (26: 289-297)

Boo Yeon Won and Tae Oh Cho

The species name of *C. magdalenum* sp. nov. on the phylogenetic tree of Fig. 4 (p. 294) is incorrect. Here, we give the correct name, *C. riosmenae* sp. nov., for Fig. 4 as follow:

We thank Dr. Michael J. Wynne, Dr. David J. Garbary, and Dr. Rafael Riosmena-Rodriguez for bringing the incorrect name to our attention.



**Fig. 4.** Phylogenetic tree of the *Ceramium riosmenae* sp. nov. based on the *rbcL* sequences inferred from Maximum Likelihood (ML) analyses using the general time reversible model and the gamma distribution. The parameters were as follows: assumed nucleotide frequencies A = 0.3189, C = 0.1584, G = 0.02091, T = 0.3136; substitution rate matrix with A-C substitutions = 1.3033, A-G = 2.6418, A-T = 2.8542, C-G = 0.6370, C-T = 15.1809, G-T = 1.0000; proportion of sites assumed to be invariable = 0 and rates for variable sites assumed to follow a gamma distribution with shape parameter = 0.2013. Bootstrap proportion values (> 50%) for ML (500 replicates).

© This is an Open Access article distributed under the terms of the Creative Commons Attribution Non-Commercial License (<http://creativecommons.org/licenses/by-nc/3.0/>) which permits unrestricted non-commercial use, distribution, and reproduction in any medium, provided the original work is properly cited.

#### Corresponding Author

Tae Oh Cho, Department of Marine Life Science, Chosun University, Gwangju 501-759, Korea  
E-mail: [tocho@chosun.ac.kr](mailto:tocho@chosun.ac.kr)  
Tel: +82-62-230-7161 Fax: +82-62-230-7467